

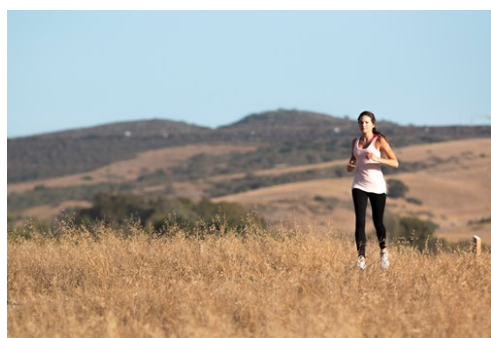


Photo:



Irvine Company

As if the honor of being deemed "America's Safest Big City"* since 2005 isn't enough, Irvine – the center of Orange County, California – offers visitors shopping, diverse dining, outdoor recreation and family-friendly activities. Just minutes from the area's popular beaches and world-famous attractions – Irvine is the ideal location for a true Southern California experience!



Go where no one has
VENTURED BEFORE!

5 Off the Beaten Track
Destinations in Asia

ArrivalGuides

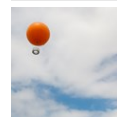
Foto: WhitefoxChen / Shutterstock

Top 5



Irvine Spectrum Center

One of Southern California's most popular shopping and dining destinations. ...



Orange County Great Park B...

The Great Park Balloon has become an Orange County icon. The 118-foot orange...



Mountains to Sea Trail

The Mountains to Sea Trail takes you on 22-mile journey starting in rugged, ...



Diamond Jamboree

A vibrant, bustling retail center featuring a range of services and dining t...

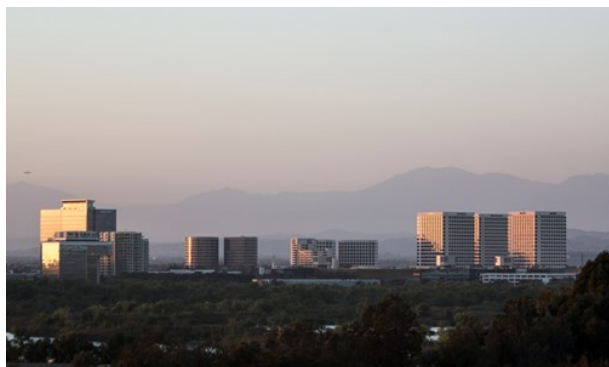


Pretend City Children's Museum

A magical interactive "city" where children have an



THE CITY



Irvine is a city like no other: a master-planned balance of urban living and preserved natural space at the center of Orange County in coastal Southern California.

Reflecting the visionary spirit of its University of California campus, Irvine is not only a great place to vacation, it's an exceptional destination for meetings and events, a multicultural home to over 100 company headquarters.

At the same time, Irvine is one of the most family-friendly destinations in the country, ranked "America's Safest Big City" by the FBI since 2005 and less than half an hour from some of California's best-loved attractions, including Laguna Beach, Newport Beach, Disneyland Park® and Knott's Berry Farm.

If you love sunny days and mild nights, world-class shopping, hiking and biking, and diverse dining, find it all at the center of Orange County: Irvine, California.

Irvine boasts the most open space in all of Orange County with 16,000 acres offering 54 miles of off-street bikeways, along with hiking and horseback riding trails.

Much of Irvine's open space is part of the Irvine Ranch which encompasses 50,000 acres and has

been named a Natural Landmark by both the U.S. Department of the Interior and State of California. The area, deemed by scientists as one of the world's biodiversity "hot spots," features hundreds of different species of plants and animals, including eagles, badgers, mountain lions, Tecate cypress trees, and many rare species of birds, reptiles and amphibians.

Bommer and Shady Canyons beckon walkers and hikers to stroll past ancient oak and sycamore groves and rough rock outcrops.

The 2.8-acre Quail Hill Trailhead is an easy two-mile natural surface trail and is the only wilderness trail part of the Natural Landmarks that allows dogs.

San Joaquin Marsh and Wildlife Sanctuary are comprised of more than 300 acres of restored coastal freshwater wetlands. Twelve miles of trails serve as an oasis for walkers, joggers, and birdwatchers as well as a living laboratory for students, teachers and the public.

Northwood Gratitude & Honor Memorial



The nation's only memorial dedicated to honoring the fallen American service members in the wars of Afghanistan and Iraq.

Public ceremonies on Memorial Day and Veterans Day.

Address: 4531 Bryan Avenue, Irvine
Internet: www.northwoodmemorial.com

TOP 10



1. Bike Irvine - 44.5 miles of off-road bicycle trails and 282 miles of on-road bicycle lanes.
2. Please your palate with a variety of cuisines and international flavors at Diamond Jamboree.
3. Shop at one of Irvine's retail and lifestyle centers - Irvine Spectrum Center and The Market Place.
4. Celebrate 50 different cultures at the Irvine Global Village Festival, Orange County's largest multicultural festival.
5. Ride the Irvine Spectrum Center's iconic 108-foot tall Giant Wheel, custom-designed and hand crafted in Italy.
6. Let the kids play grown-up at Pretend City Children's Museum.
7. Pay your respect at the Northwood Gratitude and Honor Memorial, the nation's only memorial dedicated to honoring all of the fallen American service members in the wars of Afghanistan and Iraq.
8. Explore the area's history and learn how the city began with a visit to the Irvine Historical Museum and the Irvine Ranch Historic Park.
9. Get a bird's-eye view of the area 400 feet above the ground aboard the Great Park Balloon at the Orange County Great Park.
10. Visit the Irvine Museum, the only museum in the state dedicated to the preservation and display of California Impressionism.

Irvine Spectrum Center



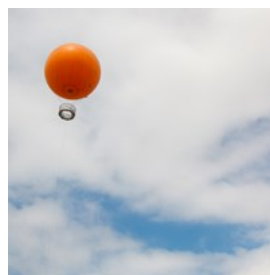
One of Southern California's most popular shopping and dining destinations. Over 130 retailers from Nordstrom to H&M, and a diverse collection of specialty stores. Center features an IMAX theater, an antique-themed carousel and an 108-foot Giant Wheel hand-crafted in Italy with 1,400 glowing lights.

Address: 71 Fortune Drive

Phone: +1 949 753 5180

Internet: www.shopirvinespectrumcenter.com

Orange County Great Park Balloon

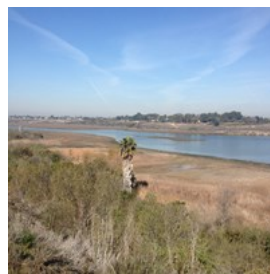


The Great Park Balloon has become an Orange County icon. The 118-foot orange, helium balloon soars into the sky to height of 400 feet and offers an unmatched 360 degree view that spans 40 miles on a clear day.

Phone: +1 866 829 3829

Internet: www.ocgp.org/visit/balloon

Mountains to Sea Trail



The Mountains to Sea Trail takes you on 22-mile journey starting in rugged, oak-filled Weir Canyon. The trail then takes you south toward the coast through five different cities and a portion of unincorporated Orange County - virtually guaranteeing that the only constant on this trek is an exhilarating change of scenery and topography.

Internet: <http://forever.irvinecompany.com/explore/mountain-s-to-sea-trail>

Diamond Jamboree



A vibrant, bustling retail center featuring a range of services and dining to please every palate. A unique Southern California destination

that brings together a variety of cuisines and international flavors.

Address: 2700-2750 Alton Parkway, Irvine

Phone: +1 626 285 5550

Internet: www.diamond-jamboree.com

Pretend City Children's Museum



A magical interactive "city" where children have an opportunity to play grown-up by going to work, buying groceries, visiting the doctor and collecting their pay from an ATM.

Address: 29 Hubble, Irvine

Phone: +1 949 428 3900

Internet: www.pretendcity.org

Irvine Museum



The only museum in California dedicated to the preservation and display of Californian Impressionism.

Address: 18881 Von Karman Avenue, Irvine

Opening hours: Tuesday through Saturday, 11 a.m. to 5 p.m.

Phone: +1 949 476 0294

Tickets: Admission is complimentary for all visitors.

Donations are gratefully accepted.

Internet: www.irvinemuseum.org

Northwood Gratitude & Honor Memorial



The nation's only memorial dedicated to honoring the fallen American service members in the wars of Afghanistan and Iraq.

Public ceremonies on Memorial Day and Veterans Day.

Address: 4531 Bryan Avenue, Irvine

Internet: www.northwoodmemorial.com

Historic Irvine



The history of Irvine is not a long one -- in fact, today's growing city celebrated its 40th anniversary in December 2011. But the Irvine

region has a long and rich history, dating back to 1878 when James Irvine acquired his business partners' interests in 168 square miles of future Orange County land for \$150,000; today, that amount would equate to \$3.56 million. The acquisition created the great Irvine Ranch consisting of 110,000 acres stretching 23 miles from the Santa Ana River to the Pacific Ocean.

Visitors can explore the oldest standing structure within the original boundaries of Irvine Ranch, and the first wooden house erected between Anaheim and San Diego at the Irvine Historical Museum. In addition, the Irvine Ranch Historic Park, site of the original Irvine Ranch headquarters, features several of the original structures, including the home of James Irvine II, numerous barns and residential buildings.

Step back in time at the La Quinta Inn in Old Town Irvine where 101 rooms of the hotel once

served as the silos of a former lima bean and grain warehouse. In 1986, the silos were converted to the hotel. The center hexagonal concrete silos are now the interior corridors serving the rooms located in the exterior facing silos and the tin shed, kept mostly intact including the original main lift, is utilized as the area where the hotel serves breakfast. The hotel has a picture display including a brief history and description of "Historic Old Town Irvine."

Internet: www.irvineranchhistory.com

Irvine Global Village Festival



Orange County's largest multicultural festival celebrates Irvine's diversity. More than 50 cultures are represented, with music and dance on five stages. Cultural and religious displays, international cuisine, a world marketplace and a giant interactive Kids Village. Held in either September or October.

Address: 4 Civic Center Plaza, Irvine

Opening hours: 10 a.m. to 6 p.m.

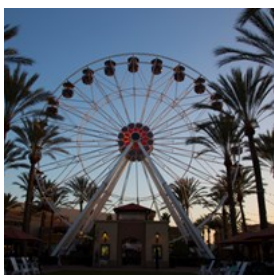
Phone: +1 949 724 6606

Tickets: Admission is free

Internet: www.irvinefestival.org

Email: festival@cityofirvine.org

Irvine Spectrum Center Giant Wheel



The 108-foot-tall Giant Wheel was handcrafted in Italy and glows with 1,400 lights.

Address: 71 Fortune Drive, Irvine

Phone: +1 949 753 5180

Internet: www.shopirvinespectrumcenter.com

The Market Place



Offers a 165-acre regional lifestyle shopping center, featuring best-in-class for a variety of retail categories, including electronics, home furnishings and decor, sporting goods, apparel, grocery, fitness, books and more.

Address: 2915 El Camino Real, Tustin

Phone: +1 714 730 4124

Internet: www.shopmarketplace.com

EVENTS



Irvine is home to annual and seasonal events.

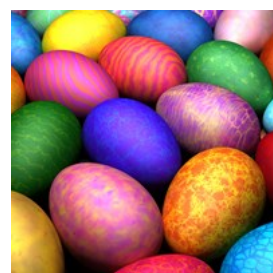
Irvine International Film Festival

Celebrates the power of individual expression and diverse points of views.

Takes place in January.

Internet: www.irvinefilmfest.com

Irvine Regional Park's Easter Eggstravaganza



Pictures with the Easter Bunny, Easter egg hunts, train rides, carnival games, bunny bounce house, picture stands, OC Zoo, cookie decorating,

face painting, hay rides, great food, pony rides, bike and paddle boat rentals and much more! Held in March or April pending dates of Easter.

Phone: +1 714 973 6835

Internet: www.irvineparkrailroad.com

Tanaka Farms Strawberry Tours



Take a wagon ride tour of the 30-acre working farm. See how fruits and vegetables grow, get a taste of fresh strawberries and pick

your own. March through June.

Address: 5380 University Dr, Irvine

Phone: +1 949 653 2100

Internet: www.tanakafarms.com

OC Blues Football Club



USL PRO Soccer plays at the University of California, Irvine Anteater Stadium. March-September.

Address: 903 W. Peltason, Irvine

Internet: www.ocbluesfc.com

Irvine Korean Cultural Festival

A culture-filled extravaganza replete with fine Korean cuisine, games, art, music and entertainment. Typically held in May.

Address: 1 Civic Center Plaza, Irvine

Internet: www.irvinekoreanfestival.com

Studio Arts Festival



More than 100 artisans' works on display, including paintings, ceramics, sculpture, jewelry, photography, textiles and glass. Enjoy live demonstrations and musical performances.

Held in June.

Phone: +1 949 724 6880

Internet: www.cityofirvine.org/cityhall/cs/finearts/specialevents/studio_arts_festival.asp

Tanaka Farms Watermelon Tours



Take a wagon tour of the 30-acre working farm. See how produce grows, taste fresh watermelon and pick your own organic melon. July

through August.

Address: 5380 University Dr, Irvine

Phone: +1 949 653 2100

Internet: www.tanakafarms.com

Irvine Global Village Festival



Orange County's largest multicultural festival celebrates Irvine's diversity. More than 50 cultures are represented, with music and dance on five stages. Cultural and religious displays, international cuisine, a world marketplace and a giant interactive Kids Village. Held in either September or October.

Address: 4 Civic Center Plaza, Irvine

Opening hours: 10 a.m. to 6 p.m.

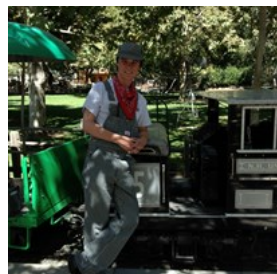
Phone: +1 949 724 6606

Tickets: Admission is free

Internet: www.irvinefestival.org

Email: festival@cityofirvine.org

Irvine Park Railroad Pumpkin Patch



Activities for kids of all ages - hay rides, Halloween bounce house, face painting, and more. Held in October.

Address: 1 Irvine Park Road, Orange

Phone: +1 714 997 3968

Internet: www.irvineparkrailroad.com

Style Week OC



Orange County's biggest fashion happening with designer runway shows, a fashion carnival, sneak peeks, celebrity guests, restaurant debuts and a lineup of must-see in-store events. Typically held in September.

Internet: www.styleweek.oc

Tanaka Farms U-Pick Pumpkin Patch



Wagon rides, petting zoo, corn maze, games, arts and crafts and food. September through October.

Address: 5380 University Dr, Irvine

Phone: +1 949 653 2100

Internet: www.tanakafarms.com

Holiday Faire

More than 150 vendors displaying arts and crafts, hand-blown glass, ceramics, jewelry, folk crafts, porcelain dolls, clothing, holiday

decorations and more. Typically held in November.

Address: 14321 Yale Avenue, Irvine

Phone: +1 949 724 6880

Internet: www.cityofirvine.org/cityhall/cs/finearts/specialevents/holiday_faire.asp

Holiday Ice Rink



Irvine Spectrum Center is transformed into a winter wonderland when the festive outdoor Holiday Ice Rink returns to Giant Wheel Court. October

through February.

Address: 71 Fortune Drive, Irvine

Internet: www.skatespectrum.com

Irvine Park Railroad's Annual Christmas Train



Activities for kids of all ages - pictures with Santa Claus, story time with Mrs. Claus, carnival games, Christmas cookie decorating, a coloring

corner and more. Held in December.

Address: 1 Irvine Park Rd, Orange

Phone: +1 714 997 3968

Internet: www.irvineparkrailroad.com

Certified Farmers Market



Features fresh, locally grown fruits and vegetables, handcrafted artisan products, live music and entertainment, and a selection of

gourmet food trucks. Year round, every Sunday at the Orange County Great Park.

Internet: www.ocgp.org

DO & SEE



Irvine offers visitors outdoor recreation with miles of hiking and biking trails, family-friendly activities, diverse dining, golf and shopping.

Rancho San Joaquin Golf Course

Known as Irvine's best golf value, this course offers a challenge to all golfers, some of South Orange County's finest greens, three scenic lakes and a large practice range.

Address: 1 Ethel Coplen Way, Irvine
Internet: www.ranchosanjoaquin.com

Orange County Great Park

The park offers fun activities with events throughout the year, a rotating art gallery and a farmers market every Sunday, including:

The Great Park Balloon is a 118-foot-high helium balloon that's become an O.C. icon, soaring to 400 feet, and offering a 360 degree view of up to 40 miles.

The Great Park Carousel is a favorite for kids of all ages.

The Kids' Area includes the Farm + Food Lab, Kids Rock Playground, the Incredible Edible Farm, Walkable Historical Timeline, North Lawn recreation area, a 105-acre Great Park Farm and Historic Hanger 244.

Internet: www.ocgp.org

Irvine Regional Park

This huge park encompasses a variety of different activities, from bike, horse and paddleboat rentals, pony rides for kids, a nature center, playgrounds and snack bars.

Address: 1 Irvine Park Road, Orange
Internet: www.ocparks.com

Orange County Zoo

Located inside the beautiful Irvine Regional Park, the zoo is home to animals and plants native to the Southwestern United States. It also features a barnyard with domestic goats, sheep, pot-bellied pigs and more.

Address: 1 Irvine Park Road, Orange
Internet: www.ocparks.com/zoo

Irvine Barclay Theatre

Music and dance aficionados will want to take advantage of performances. The 756-seat hall is renowned for its intimate atmosphere and superb acoustics.

Address: 4242 Campus Drive, Irvine
Phone: +1 949 854 4607
Internet: www.thebarclay.org

UCI Arboretum

Offers an exciting introduction to the unique flora of coastal California, from Irvine south into Mexico, as well as other habitats.

Address: Campus Drive, Irvine
Internet: arboretum.bio.uci.edu

Beall Center for Art + Technology

High-tech art center and gallery focuses on experimental and media arts.

Address: 712 Arts Plaza University of California, Irvine
Internet: www.beallcenter.uci.edu

ChocXo Bean to Bar Chocolatier

A member of the Chocolate Production team walks participants through the chocolate making process from the bean to the bar. You'll walk along the educational wall and see a scale model of a cacao tree, learn how chocolate is fermented and dried, then view the ChocXO factory to find out what happens next. This in-depth look is as educational as it is delicious. Participants will sample cocoa nibs, cocoa liquor, and, of course, the finished product of chocolate bars, filled chocolates and chocolate bark.

Address: 9461 Irvine Center Drive, Irvine, CA 92618

Opening hours: Tues to Sat 10 am - 7 pm

Phone: + 1 949 825 5781

Internet: www.chocxo.com

Oak Creek Golf Club

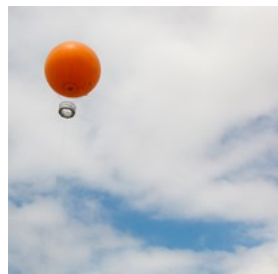


As part of the Audubon Cooperative Sanctuary Program, this course features a tranquil creek running through tapered fairways, plus gorgeous greens, beautiful lakes, and bull-nosed carved bunkers. Great for golfers at all levels.

Address: Oak Creek Club Drive, Irvine

Internet: www.oakcreekgolfclub.com

Orange County Great Park Balloon



The Great Park Balloon has become an Orange County icon. The 118-foot orange, helium balloon soars into the sky to height of 400 feet and

offers an unmatched 360 degree view that spans 40 miles on a clear day.

Phone: + 1 866 829 3829

Internet: www.ocgp.org

Strawberry Farms Golf Club



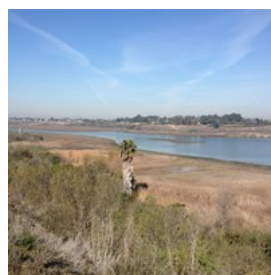
Set around canyons and wetlands, this 18-hole, par 71 course offers picturesque vistas, large rolling greens, and scenic hills. It's also home to the

only David Leadbetter Golf Academy in California.

Address: 11 Strawberry Farms Road, Irvine

Internet: www.sf-golf.com

Mountains to Sea Trail



The Mountains to Sea Trail takes you on 22-mile journey starting in rugged, oak-filled Weir Canyon. The trail then takes you south toward

the coast through five different cities and a portion of unincorporated Orange County - virtually guaranteeing that the only constant on this trek is an exhilarating change of scenery and topography.

Internet: <http://forever.irvinecompany.com/explore/mountain-s-to-sea-trail>

Tustin Ranch Golf Club

Want to squeeze in a quick nine on a public course? The "Big Easy" at Tustin Ranch has been voted "The Best Orange County Golf Course" year after year by Orange County Register readers. And Tustin's cart GPS offers full-hole layouts in Korean, Chinese, Japanese and Spanish for international visitors.

Address: 12442 Tustin Ranch Road, Tustin

Internet: www.tustinranchgolf.com

Pretend City Children's Museum



A magical interactive "city" where children have an opportunity to play grown-up by going to work, buying groceries, visiting the doctor and collecting their pay from an ATM.

Address: 29 Hubble, Irvine

Phone: +1 949 428 3900

Internet: www.pretendcity.org

Irvine Museum



The only museum in California dedicated to the preservation and display of Californian Impressionism.

Address: 18881 Von Karman Avenue, Irvine

Opening hours: Tuesday through Saturday, 11 a.m. to 5 p.m.

Phone: +1 949 476 0294

Tickets: Admission is complimentary for all visitors.

Donations are gratefully accepted.

Internet: www.irvinemuseum.org

Northwood Gratitude & Honor Memorial



The nation's only memorial dedicated to honoring the fallen American service members in the wars of Afghanistan and Iraq.

Public ceremonies on Memorial Day and Veterans Day.

Address: 4531 Bryan Avenue, Irvine

Internet: www.northwoodmemorial.com

Historic Irvine



The history of Irvine is not a long one -- in fact, today's growing city celebrated its 40th anniversary in December 2011. But the Irvine

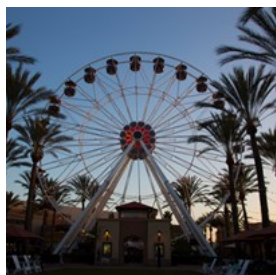
region has a long and rich history, dating back to 1878 when James Irvine acquired his business partners' interests in 168 square miles of future Orange County land for \$150,000; today, that amount would equate to \$3.56 million. The acquisition created the great Irvine Ranch consisting of 110,000 acres stretching 23 miles from the Santa Ana River to the Pacific Ocean.

Visitors can explore the oldest standing structure within the original boundaries of Irvine Ranch, and the first wooden house erected between Anaheim and San Diego at the Irvine Historical Museum. In addition, the Irvine Ranch Historic Park, site of the original Irvine Ranch headquarters, features several of the original structures, including the home of James Irvine II, numerous barns and residential buildings.

Step back in time at the La Quinta Inn in Old Town Irvine where 101 rooms of the hotel once served as the silos of a former lima bean and grain warehouse. In 1986, the silos were converted to the hotel. The center hexagonal concrete silos are now the interior corridors serving the rooms located in the exterior facing silos and the tin shed, kept mostly intact including the original main lift, is utilized as the area where the hotel serves breakfast. The hotel has a picture display including a brief history and description of "Historic Old Town Irvine."

Internet: www.irvineranchhistory.com

Irvine Spectrum Center Giant Wheel



The 108-foot-tall Giant Wheel was handcrafted in Italy and glows with 1,400 lights. The shopping center also features an

antique-themed carousel.

Address: 71 Fortune Drive, Irvine

Internet: www.shopirvinespectrumcenter.com

DINING



Andrei's Conscious Cuisine & Cocktails



Renowned French Chef Yves Fornier expertly blends California cuisine, Mediterranean flavors and sustainable foods.

Visitors can give back by dining at Andrei's Conscious Cuisine & Cocktails where 100% of the restaurant's profits benefit the Andrei Foundation, a foundation established in honor of the owner's brother/son who was afflicted with an eye disease called Retinitis Pigmentosa. The primary focus of the foundation is to support eye research and provide support to those with visual impairment. The non-profit organization also focuses on a number of community and global support causes including;

a local guide dog team, Makapo Aquatics, a blind paddling team, surf lessons and an Ocean Institute "ocean adventure" for visually impaired children, building a school library in rural Sri Lanka, funding and building a rain-collection clean water system in Nicaragua and providing life-changing surgeries for over 20 Russian orphans.

Address: 2607 Main Street, Irvine

Internet: www.andreisrestaurant.com

85°C Bakery



Specializing in coffee, cakes, and breads, 85°C Bakery opened in Irvine in 2009 as the first U.S. store. Why 85°C? It is the ideal temperature to

drink coffee. Their most popular beverage is the Sea Salt Coffee - slightly sweetened iced coffee topped with creamy foam whipped with sea salt, with semi-sweet chocolate powder sprinkled over the top of foam.

Address: 2700 Alton Parkway, Irvine

Internet: www.85cafe.us

Bistango



Artful New American cuisine with a Wine Spectator award-winning wine list of over 400 varietals. The ambiance is further enriched each

season by revolving modern art exhibits, plus live jazz and blues music.

Address: 19100 Von Karman Avenue, Irvine

Internet: www.bistango.com

Prego Ristorante

For more than two decades, Executive Chef Ugo

Allesina, born and raised in the region of Piemonte, Italy, has been serving authentic Italian fare at Prego Ristorante. The menu features pizza baked in a wood-fired oven, freshly made pastas, grilled fresh fish, spit-roasted meats and fowl, and an extensive list of wines from Italy and California.

Address: 18420 Von Karman Avenue, Irvine
Internet: www.pregoristoranti.com

Diamond Jamboree



A vibrant, bustling retail center featuring a range of services and dining to please every palate, A unique Southern California destination that brings together a variety of cuisines and international flavors.

Address: 2700-2750 Alton Parkway, Irvine
Phone: +1 626 285 5550
Internet: www.diamond-jamboree.com

Il Fornaio

An authentic Italian restaurant featuring a monthly regional menu.

Address: 18051 Von Karman Avenue, Irvine
Internet: www.ilfornaio.com

El Cholo Cantina

A local favorite for nearly 90 years. Mexican recipes with modern twists include filet mignon tacos and margaritas highly praised by the Orange County Register.

Address: 5465 Alton Pkwy, Irvine
Internet: www.elcholo.com

Zov's Cafe & Bakery

One of Orange County's most celebrated female chefs, Zov Karmardian serves unique cuisine that

blends contemporary with Mediterranean, Middle Eastern and Armenian influences at Zov's.

Address: 3915 Portola Parkway, Irvine
Internet: www.zovs.com

Paul Martin's American Grill

Epitome of a farm-to-table venue with local, seasonal and delicious cuisine.

Address: 31 Fortune Drive, #302, Irvine
Internet: www.paulmartinsamericangrill.com

Agora Churrascaria

A Brazilian steakhouse serving up to 16 cuts of grilled meats by gaucho-clad waiters.

Address: 1830 Main Street, Irvine
Internet: www.agorachurrascaria.com

Ruth's Chris

The penultimate restaurant for USDA prime steaks and fresh seafood.

Address: 2961-A Michaelson Drive, Irvine
Internet: www.ruthschris.com

Chef Hung Taiwanese Noodles

Features renowned Taiwanese beef noodle dishes.

Address: 2710 Alton Parkway, Irvine
Internet: www.chefhungnoodle.com

Ajisen Ramen

Noodle dishes, curries, tonkatsu and other tasty dishes.

Address: 2700 Alton Pkwy, Irvine
Internet: www.ajisen.ca

Curry House CoCo Ichibanya

Specializes in "Japan's best curry here in the states."

Address: 2710 Alton Pkwy, Irvine

Internet: www.ichibanyausa.com

Kula Revolving Sushi Bar

Fresh fish and Japanese food daily.

Address: 2700 Alton Pkwy #133, Irvine

Internet: www.kulausa.com

Tokyo Table

Fresh, seasonal ingredients and a large selection of sake.

Address: 2710 Alton Pkwy, Irvine

Internet: www.tokyotable.com

BCD Tofu House

Famous for bowls of sizzling hot Korean soup.

Address: 2700 Alton Pkwy #135, Irvine

SWSH Shabu Shabu

Presents sukiyaki, sake, dessert fondue and more.

Address: 2710 Alton Pkwy #213, Irvine

Internet: www.swshshabu.com

Twenty Eight Restaurant & Lounge

Enjoy Top Chef finalist, Shirley Chung's play with California flavors and cuisines from all over the world.

Address: 19530 Jamboree Road, Irvine

Internet: www.twentyeightoc.com

90 Pacifica

America bistro-style cuisine in a comfortable atmosphere.

Address: 90 Pacifica, Irvine

Internet: <http://doubletree3.hilton.com/en/hotels/california/doubletree-by-hilton-hotel-irvine-spectrum-ONASDT/dining/index.html>

Paradise Restaurant

California/American breakfast, lunch and dinner.

Address: 17941 Von Karman Avenue, Irvine

Internet: www.paradiseeat.com

Stonefire Grill

A unique, fast-causal dining experience with a distinct and innovative style.

Address: 3966 Barranca Parkway, #A, Irvine

Internet: www.stonefiregrill.com

Kabuki Japanese Restaurant

Japanese and sushi restaurant.

Address: 31 Fortune Drive, #300, Irvine

Internet: www.kabukirestaurants.com

FLOE Lounge

Relax and enjoy a specialty cocktail or glass of wine. Live music and drink specials weekly.

Address: 18000 Von Karman Avenue, Irvine

Internet: www.marriott.com/hotels/hotel-information/restaurant/laxir-irvine-marriott/

Ha' Penny Pub and Grill

An Irish pub and casual dining experience features an innovative menu and traditional favorites for lunch and dinner.

Address: 2120 Main Street, Irvine

Internet: www.embassysuites3.hilton.com/en/hotels/california/embassy-suites-irvine-orange-county-airport-KOLCAES/dining/index.html

Waterfalls

Traditional and Mediterranean influences, sophisticated European presentation and infusions.

Address: 18700 MacArthur Boulevard, Irvine

Internet: www.atriumhotel.com/dining/

Brio Tuscan Grille

Authentic, Northern Italian cuisine.

Address: 618 Spectrum Center Drive, Irvine

Internet: www.brioitalian.com

Lucca Café

Executive Chef Cathy Pavlos has developed a collection of remarkable recipes, inspired by her grandmother's cooking and her favorite restaurants in Italy, France and Greece. The restaurant's menu features slightly modified offerings that build in the flavors of California.

Address: 6507 Quail Hill Pkwy, Irvine

Internet: www.luccacafe.com

McCormick & Schmick's Seafood & Steak

Menu features the signature "Fresh List" highlighting an impressive number of fresh seafood varieties, in addition to aged steaks, poultry, salads and pasta.

Address: 2000 Main Street, Irvine

Internet: www.mccormickandschmicks.com

Lyfe Kitchen

Choices to please anyone, from flexitarian to vegetarian, omnivore to vegan.

Address: 407 Irvine Spectrum Drive, Irvine

Internet: www.lyfekitchen.com

SHOPPING



Irvine and Orange County offer world-class shopping and entertainment with a eclectic mix of retail centers, upscale boutiques, fashion, food and IMAX movies.

Irvine Spectrum Center



One of Southern California's most popular shopping and dining destinations. Over 130 retailers from Nordstrom to H&M, and a diverse collection of specialty stores. Center features an IMAX theater, an antique-themed carousel and an 108-foot Giant Wheel hand-crafted in Italy with 1,400 glowing lights.

Address: 71 Fortune Drive

Phone: +1 949 753 5180

Internet: www.shopirvinespectrumcenter.com

The District at Tustin Legacy



The District at Tustin Legacy represents a one million square-foot lifestyle center boasting your favorite retailers such as: Whole Foods Market, Costco, Target, Lowe's and TJ Maxx/Home Goods. It also features the pet-friendly District Promenade, plus many

specialty retail shops.

Address: 2437 Park Avenue, Tustin
Internet: www.thedistricttl.com

Diamond Jamboree



A vibrant, bustling retail center featuring a range of services and dining to please every palate, A unique Southern California destination that brings together a variety of cuisines and international flavors.

Address: 2700-2750 Alton Parkway, Irvine
Phone: + 1 626 285 5550
Internet: www.diamond-jamboree.com

South Coast Plaza

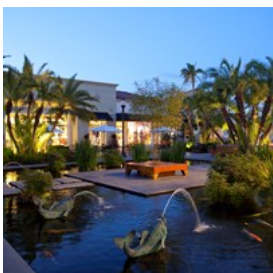


South Coast Plaza is recognized internationally for its unparalleled retail collection and award-winning

restaurants, from A to Z. Shop at Armani, Bvlgari, Chanel, Chloe, Dior, Hermes, Jimmy Choo, Mikimoto, Roberto Cavalli, Zara and more.

Address: 3333 Bristol Street, Costa Mesa
Internet: www.southcoastplaza.com

Fashion Island



Better known as Orange County's premier coastal shopping and dining experience, Fashion Island is a upscale as it gets. It offers a

sophisticated, yet relaxed atmosphere featuring ocean views, specialty boutiques, world-class department stores and a wide variety of

restaurants and cafes.

Address: 401 Newport Center Drive, Newport Beach
Internet: www.shopfashionisland.com

The Market Place



Offers a 165-acre regional lifestyle shopping center, featuring best-in-class for a variety of retail categories, including electronics, home furnishings and decor, sporting goods, apparel, grocery, fitness, books and more.

Address: 2915 El Camino Real, Tustin
Phone: + 1 714 259 9090
Internet: www.shopmarketplace.com

ACCOMMODATIONS



Irvine offers a variety of accommodations from full-service and boutique to extended stay and all suite properties. Irvine has the lowest hotel tax in Orange County at 10% versus up to 17% elsewhere.

Atrium Hotel

Resort-style setting. Self-service laundry, on-site car rental and business center services. Complimentary local shuttle.

Address: 18700 MacArthur Road, Irvine
Phone: + 1 949 833 2770
Internet: www.atriumhotel.com

Candlewood Suites

Completely renovated in 2013, all rooms and common areas. Free lending movie library. Modern fully-equipped kitchens and bathrooms.

Address: 16150 Sand Canyon Avenue, Irvine

Phone: + 1 949 788 0500

Internet: www.ihg.com/candlewood

Courtyard by Marriott, Irvine Airport

State-of-the-art lobby with inviting, flexible spaces to work or relax. Bistro provides healthy food and drink choices.

Address: 2701 Main Street, Irvine

Phone: + 1 949 757 1200

Internet: www.irvinecourtyard.com

Courtyard, Irvine Spectrum

Introducing California's next generation Courtyard, featuring 201 tech savvy guest rooms and suites. All rooms have state-of-the-art technology with SMART TVs with complimentary Wi-Fi. Gym features Cross-Fit style equipment with cardio machines looking out at a 75 ft. lap pool.

Address: 7955 Irvine Center Drive, Irvine

Phone: + 1 949 453 1033

Internet: www.courtyardirvine.com

DoubleTree by Hilton, Irvine Spectrum

Only AAA three-diamond, full-service hotel in Irvine Spectrum area. Newly-renovated restaurant (90 Pacifica) serving breakfast, lunch and dinner. Complimentary shuttle service also available to local offices. Room service, business center, outdoor pool.

Address: 90 Pacifica, Irvine

Phone: + 1 949 471 8888

Internet: www.irvinespectrum.doubletree.com

Embassy Suites Irvine

Spacious two-bedroom suites with separate

bedroom and parlor. Complimentary breakfast and evening reception with host bar daily. Hilton Honors.

Address: 2120 Main Street, Irvine

Phone: + 1 949 553 8332

Internet: www.irvineoc.embassysuites.com

Extended Stay America, Irvine Spectrum

Designed especially for longer stays with studio suite rooms featuring fully-equipped kitchens, free grab-n-go breakfast, Culligan filtered water in every room, flat screen TV and personalized voicemail.

Address: 30 Technology Drive, Irvine

Phone: + 1 949 727 4228

Internet: www.extendedstayamerica.com

Hilton Garden Inn

Modern elegance, chic style and comfort, at one of Orange County's newest hotels, meets convenience and affordability. The hotel offers complimentary shuttle service and parking, a prime location amid landmark corporations, world-class shopping, the OC Great Park and Orange County beaches. Savor breakfast and dinner at the Bistro and martinis at Zen Bar.

Address: 2381 Morse Avenue, Irvine

Phone: + 1 877 782 9444

Internet: www.hiltongardeninn.com

Hilton Irvine

Modern, hip atmosphere. Spacious rooms complete with 42" TVs, Hilton Serenity Bed Collection and in-room work stations.

Address: 18800 MacArthur Boulevard, Irvine

Phone: + 1 949 833 9999

Internet: www.hiltonirvineorangecounty.com

Hotel Irvine Jamboree Center

Irvine's independent lifestyle hotel. Member of Preferred Hotel Group and iPrefer points and

reward program.

Address: 17900 Jamboree Boulevard, Irvine
Phone: + 1 888 230 4452
Internet: www.hotelirvine.com

Irvine Marriott

Experience the chic new, high-tech, high touch Marriott Greatroom lobby with new restaurant, bar and lounge and ultra-plush revitalized guestrooms.

Address: 18000 Von Karman Avenue, Irvine
Phone: + 1 949 553 0100
Internet: www.irvinemarriott.com

La Quinta Inn & Suites, Irvine Spectrum

Listed in the National Register of Historical sites. Plentiful and modern amenities including free Bright Side Breakfast and complimentary local area shuttle.

Address: 14972 Sand Canyon Avenue, Irvine
Phone: + 1 949 551 0909
Internet: www.laquintairvinespectrum.com

Residence Inn by Marriott, Irvine Airport

All the conveniences of home - relax in our over-sized suite rooms with fully-equipped kitchens. Complimentary breakfast buffet and parking, executive board room and meeting space to accommodate up to 70 people.

Address: 2855 Main Street, Irvine
Phone: + 1 949 261 2020
Internet: www.marriott.com/snaiv

Residence Inn by Marriott, Irvine Spectrum

Room to work, unwind and enjoy. Our suites provide a home-away-from-home with fully-equipped kitchens. Complimentary hot breakfast buffet and weeknight socials. Stay connected with free Wi-Fi in lobby and suites..

Address: 10 Morgan, Irvine

Phone: + 1 949 380 3000
Internet: www.marriott.com/snair

SpringHill Suites

Upscale studios feature 37" HDTVs, luxury bedding and well-equipped pantries, 24-hour business center and complimentary parking.

Address: 17601 Fitch, Irvine
Phone: + 1 949 757 0500
Internet: www.marriott.com/snaap

Wyndham Irvine - OC Airport

Pedestrian-friendly location for business and leisure. Newly-renovated Wyndham-signature touches plus new beds, free Wi-Fi access, complimentary airport shuttle. Lively Paradise Restaurant & Lounge with California cuisine featuring locally grown ingredients.

Address: 17941 Von Karman, Avenue, Irvine
Phone: + 1 949 863 1999
Internet: www.wyndham.com

ESSENTIAL INFORMATION



John Wayne Airport

Air travel to Orange County has a reputation for being hassle free thanks to passenger-friendly John Wayne Airport (SNA). An asset to Irvine's business community, SNA offers 20 non-stop flights to and from the United States, Canada and Mexico and is served by 10 commercial

passenger airlines.

The airport is serviced by a variety of airlines. Airline ticket counters are located on the Departure (upper) Level of Terminals A, B and C. Baggage claim and baggage claim offices are located on the Arrival (lower) Level.

The airport has 20 commercial (Gates 2-22) and 6 commuter gates (Gates 1A, B, C and 22A, B, C), numbered geographically from the north to the south. All gates can easily be accessed from any terminal and security checkpoint.

A variety of ground transportation options are available at John Wayne Airport (JWA) conveniently connecting the Airport to surrounding hotels, tourist attractions, businesses and residences.

Address: 18601 Airport Way, Santa Ana, CA 92707

Phone: + 1 949 252 5200

Internet: www.ocair.com

Email: info@ocair.com

The Toll Roads

The Toll Roads are the largest toll road network in California, totaling 51 miles and accounting for more than 20 percent of Orange County highways. Developed and operated by Transportation Corridor Agencies (TCA), the network is comprised of the 73, 133, 241 and 261 Toll Roads.

Cash tolling is no longer accepted on The Toll Roads, but there are now new ways to pay. Drivers can pay tolls with FasTrak®, an ExpressAccount™ or use One-Time-Toll™.

One-Time-Toll is the ideal choice for out-of-town visitors and infrequent users of The Toll Roads. No account necessary - users drive the 73, 133,

241 or 261 Toll Roads anytime, day or night, then pay within 48 hours after driving on The Toll Roads. Drivers can pay online at thetollroads.com or by using The Toll Roads app.

Internet: www.thetollroads.com

Time Zone

Irvine is located in the Pacific time zone, and all times are reflected in Pacific time (PST).

Public Transport

The Irvine Shuttle (iShuttle), offers two convenient routes throughout the city, including stops at the airport, the shops and eateries of Diamond Jamboree, the Irvine Museum, popular restaurants, the Tustin Metrolink Station and Irvine's larger hotels. Fares are just \$1 or \$.50 for peak and off-peak hours, respectively.

Irvine is also served by busses of the Orange County Transportation Authority (OCTA), and the Irvine Station offers convenient rail service from Amtrak and Metrolink, putting coastal Southern California from San Diego to San Luis Obispo in easy reach.

Internet: www.cityofirvine.org/cityhall/pw/ishuttle

Taxi

John Wayne Airport Yellow Cab offers convenient taxicab service to travelers from the Ground Transportation Center (GTC) on the Arrival (lower) Level between Terminals A and B. Passengers arriving in Terminal C can call Yellow Cab from the Taxi Phone in Terminal C (near Baggage Carousel 5), for pickup at Column 14 on the Arrival (lower) Level. Taxicabs include standard 4-passenger vehicles, large capacity 7-passenger vans, and wheelchair access vans, and because Compressed Natural Gas powers the cabs, you'll be riding in some of the greenest

yellow vehicles in Orange County! Look for the taxi coordinators who can assist you and get you on your way.

JWA Yellow Cab

+1 714 999 9999

+1 949 999 TAXI (8294)

+1 714 444 4444

+1 949 444 4444

All taxicabs operating at John Wayne Airport are licensed through the Orange County Taxi Administration Program (OCTAP), a voluntary association of Orange County Agencies created to centralize taxicab regulation, coordinate taxicab services, and provide other administrative functions, under the direction of the Orange County Transportation Authority (OCTA). The OCTAP site allows customers to:

- * Search current names and numbers of approved taxi companies in the OC Area
- * Ensure payment of the correct amount for a cab ride and check updated taxi fares
- * Report a problem with a taxicab ride, driver or company

Telephone

Country Code: +1

Area Code in Irvine: 949

Electricity

110V AC, 60Hz

Population

223,729

Currency

U.S. dollar = 100 cents

Internet

www.destinationirvine.com

Newspapers

Orange County Register

Emergency numbers

911

Tourist information

California Welcome Center
6601 Beach Blvd.
Buena Park, CA 90621
+1 800 541 3953