



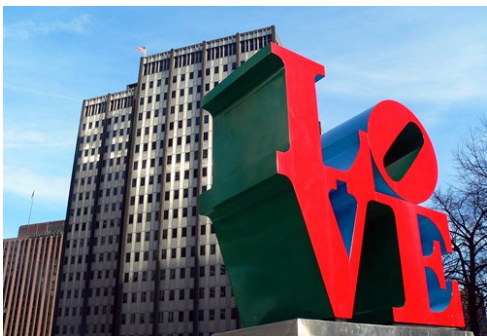
# Philadelphia, Pennsylvania

Photo: mandritoiu

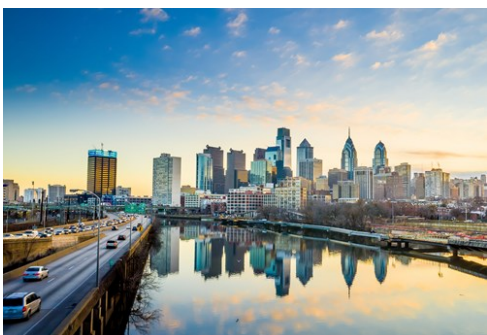


f11photo/Shutterstock.com

As the birthplace of America, Philadelphia has endured centuries of peril, challenges and conquest, and remains one of the nation's top attractions. Historical buildings, sculptures and murals line streets that were once walked by the Founding Fathers of the United States. Weather varies throughout the seasons, vacillating between mild springs, hot summers, and chilly winters, but people can always be seen out and about in the City of Brotherly Love.



Matt Harris/Flickr



f11photo/Shutterstock.com

Go where no one has  
**VENTURED BEFORE!**

**5 Off the Beaten Track**  
Destinations in Asia

**ArrivalGuides**

Foto: WhitefoxChen / Shutterstock

## Top 5



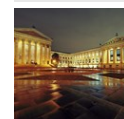
### Independence Hall

Freedom is inlaid with every brick of its architectural facade, while histor...



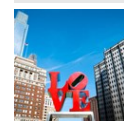
### Liberty Bell

Liberty has been a grand achievement for peoples throughout history, and the...



### Philadelphia Museum of Art

The Philadelphia Museum of Art offers an impressive array of exhibitions, co...



### Love Park

As a beacon for the City of Brotherly Love, JFK Plaza gives way to Love Park...



### Please Touch Museum

If you're struggling to find a place to take your kids in Philly - look no f...



## THE CITY



*f11photo/Shutterstock.com*

The commencement of American history passes through Philadelphia, Pennsylvania. If Washington D.C. represents modern America, then Philadelphia represents the foundation upon which the nation was built. The burgeoning identity of a young nation was crafted in the halls of Philadelphia's buildings and fought for in its streets.

With Philadelphia's emergence as America's first industrial city, it swiftly became a beacon of hope for an amalgam of cultures seeking reprieve from their respective situations. Irish immigrants sought to escape the Great Famine of the 1840s; peoples from Italy, Russia and Eastern Europe immigrated during the late 1800s; and Southern blacks moved to the city during the Great Migration. New railroads, canals and roads allowed for the influx of skilled workers and intellects from around the states and the world.

Currently, the majority of development within Philadelphia occurs in University City and Center City, the business district. Transitioning from its days of industry and manufacturing, Philadelphia now boasts a glittering service industry. The City of Brotherly Love has thus become a substantial tourist destination.

## DO & SEE



*Songquan Deng/Shutterstock.com*

Historical landmarks and beautiful scenery await visitors to Philadelphia. Its identity as a cultural epicenter has lent to an array of sights and memorable experiences for everyone. Fun may be found on land or on the water in the City of Brotherly Love.

### Independence Hall



Freedom is inlaid with every brick of its architectural facade, while history wafts in every room and corridor. As the site of independence for America, Independence Hall served witness to the signing of the Declaration of Independence and the U.S. Constitution. Generations of visitors have ventured through time in the Assembly Room, Courtroom of the Pennsylvania Supreme Court, Long Gallery, Governor's Council Chamber and Committee of the Assembly Chamber. Myriads of historical figures have tread through Independence Hall, including Benjamin Franklin, Abraham Lincoln and others.

Photo: *f11photo/Shutterstock.com*

Address: 143 South Third St, Philadelphia

Public Transport: The Market Frankford Line

Opening hours: Every day 9am - 5pm

Phone: +1 215 965 2305

Internet: [www.nps.gov/inde](http://www.nps.gov/inde)  
 Email: [inde\\_visitorinfo@nps.gov](mailto:inde_visitorinfo@nps.gov)

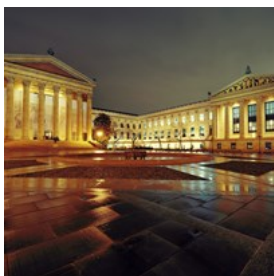
## Liberty Bell



Liberty has been a grand achievement for peoples throughout history, and the historic Liberty Bell serves as a testament to America's own piece of freedom. Named by abolitionists during the struggle to end slavery, the Liberty Bell traveled the nation following the Civil War as a symbol of freedom and healing. Now it stands proudly for all to partake in its message of equality and liberty. Video presentations and exhibits display the Bell's history, and multilingual tapes are available as well.

Photo: f11photo/Shutterstock.com  
 Address: 143 South Third St, Philadelphia  
 Phone: +1 215 965 2305  
 Internet: [www.nps.gov/inde/liberty-bell-center](http://www.nps.gov/inde/liberty-bell-center)

## Philadelphia Museum of Art

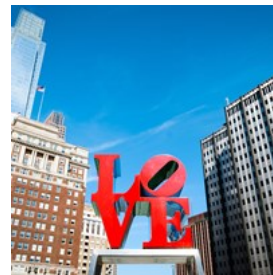


The Philadelphia Museum of Art offers an impressive array of exhibitions, collections, programs and entertainment as one of America's largest museums. It boasts more than 227,000 pieces of art, and over 200 galleries feature paintings, decorative arts, sculptures, photography, textiles, paper works and feats of architecture from around the world. Children and family-oriented programs are included, as well as fascinating lectures, films and even concerts.

Photo: Songquan Deng/Shutterstock.com  
 Address: 2600 Benjamin Franklin Parkway, Philadelphia  
 Public Transport: SEPTA bus routes 7, 32, 38, 43, and 48

currently serve the Museum area.  
 Opening hours: Tue - Sun, 10am - 5pm, Wed & Fri - 8.45pm,  
 Mon closed  
 Phone: +1 215 763 8100  
 Internet: [www.philamuseum.org](http://www.philamuseum.org)  
 Email: [visitorservices@philamuseum.org](mailto:visitorservices@philamuseum.org)

## Love Park



As a beacon for the City of Brotherly Love, JFK Plaza gives way to Love Park—an epicenter of food, art, music and fun since its emergence in the 1960s. Robert Indiana's renowned "Love" sculpture overlooks JFK Plaza, drawing kisses from countless locals and visitors for decades. But perhaps best known as the forefront of world skateboarding venues, Love Park made Philadelphia the only city to hold ESPN's "X Games" twice in a row.

Photo: Zack Frank/Shutterstock.com  
 Address: 1599 JFK Blvd, Philadelphia  
 Public Transport: Located across from Suburban Station  
 Opening hours: mon - sat 10am - 5pm  
 Phone: +1 215 683 0246  
 Internet: [www.lovepark.pl](http://www.lovepark.pl)  
 Email: [timothy.gill@phila.gov](mailto:timothy.gill@phila.gov)

## Please Touch Museum



If you're struggling to find a place to take your kids in Philly - look no further. The "Please Touch" museum lives up to the promises of its inviting name and offers plenty of interactive exhibits for kids, and grown-ups are welcome to join in.

Photo: Jim, the Photographer/Flickr (image cropped)  
 Address: 4231 Ave of the Republic, Philadelphia  
 Public Transport: Take any Regional Rail train to Suburban

Station, and then take the Route 38 bus from 15th Street and JFK Boulevard.

Opening hours: Sun 11am - 5pm, Mon - Sat 9am - 5pm

Phone: +1 215 581 3181

Internet: [www.pleasetouchmuseum.org](http://www.pleasetouchmuseum.org)

Email: [info@pleasetouchmuseum.org](mailto:info@pleasetouchmuseum.org)

More Info: Get the family membership card, worth it even if you're only planning to visit once.

### Philadelphia's Magic Gardens



Do not expect to admire trees and flowers coming to this "garden" - the showpieces here are the unique mosaics which artist Isaiah Zagar has

been creating since 1994, turning the place into a fascinating maze of artistic craftsmanship.

Photo: Kevin Burkett/Flickr (image cropped)

Address: 1020 South St, Philadelphia

Public Transport: Broad Street Line -> Lombard/South Stop

Opening hours: Wed - Mon, 11am - 6pm Tue closed

Phone: +1 215 733 0390

Internet: [www.phillymagicgardens.org](http://www.phillymagicgardens.org)

Email: [info@philadelphiamagicgardens.org](mailto:info@philadelphiamagicgardens.org)

### Reading Terminal Market



This Philadelphia market is an experience you shouldn't miss while in town. Drop into shoppes selling all sorts of edible delights such as candies,

sauces and pickles and have lunch at the food stall of your preference - there are plenty to choose from.

Photo: Annto/Shutterstock.com

Address: 12th and Arch, Philadelphia

Public Transport: Reading Terminal Market is located at the hub of Philadelphia's mass transit system.

Opening hours: Sunday 9am - 5pm, Monday - Saturday 8am - 6pm

Phone: +1 215 922 2317

Internet: [www.readingterminalmarket.org](http://www.readingterminalmarket.org)

Email: [info@readingterminalmarket.org](mailto:info@readingterminalmarket.org)

### Eastern State Penitentiary



Formerly a prison holding the likes of Al Capone, this building is now more of an experience than a museum - take the guided tour through its cold,

haunted hallways and learn about the prison's chilling history. Wear the red necklace if you don't mind being snatched away from the group by the "spirits" of deceased inmates.

Photo: Nicolas Raymond/Flickr (image cropped)

Address: 2027 Fairmount Avenue, Philadelphia

Public Transport: Bus Service to Eastern State Penitentiary is convenient to SEPTA bus routes: 48, 43, 33, 32, and 7.

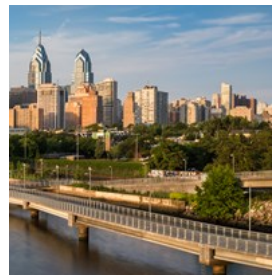
Opening hours: Every day 10am - 5pm

Phone: +1 215 236 3300

Internet: [www.easternstate.org](http://www.easternstate.org)

Email: [info@easternstate.org](mailto:info@easternstate.org)

### Schuylkill River Trail



The trail is a great place to spend time outdoors while still in the vicinity of the city. Appropriate for biking, hiking, jogging or simply taking a walk

by the river, this place is especially popular among locals during the summer months.

Photo: SINITAR/Shutterstock.com

Address: Schuylkill River, Philadelphia

Public Transport: Industrial Dr. (Hamburg) to Market St. at the river (Auburn) and Gaydos Ln. to Tunnel Rd. (Landingville)

Phone: +1 484 945 0200

Internet: [www.schuylkillrivertrail.com](http://www.schuylkillrivertrail.com)

Email: [info@schuylkillriver.org](mailto:info@schuylkillriver.org)

### Betsy Ross House



Once home to the legendary and loved American icon, Betsy Ross, the Betsy Ross House was built over 250 years ago. Before Ross'

inhabitation between 1776 and 1779, the house was occupied by artisans, shopkeepers, shoemakers and apothecaries. The eclectic mystique was bolstered by Betsy Ross, who became known for bringing the rebel cause to life with the sewing of the first American flag. Visitors are invited to tour the house and partake in the interactive exhibits and programs. Even meet the woman herself and listen to the stories and History Makers.

Photo: Beyond My Ken/Wikimedia Commons (image cropped)

Address: 239 Arch St, Philadelphia

Public Transport: 2nd St Station - MFL

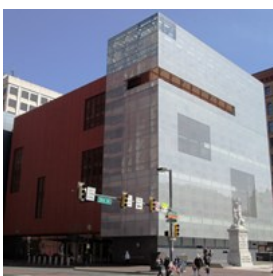
Opening hours: Tue - Sun, 10 am - 5 pm

Phone: +1 215 629 5801

Internet: [www.historicphiladelphia.org](http://www.historicphiladelphia.org)

Email: [visitorservices@historicphiladelphia.org](mailto:visitorservices@historicphiladelphia.org)

### National Museum of Jewish History



The National Museum of American Jewish History provides a comprehensive view into the history and times of American Jewish citizens. Each account of

immigration is personal and fascinating, lending to the rich cultural heritage that is now available for everyone's exploration. Core and special exhibitions connect people of all backgrounds to the capture of freedom to which millions have aspired for centuries. Afterwards, enjoy a cup of coffee at Pomegranates Café, where Kosher dairy products are available.

Photo: Beyond My Ken/Wikimedia Commons (image cropped)

Address: 101 South Independence Mall East, Philadelphia

Public Transport: Independence Hall Visitors Center, busstation

Opening hours: Tue - Fri 10am - 5pm, Sat - Sun 10am - 5.30pm

Phone: +1 215 923 3811

Internet: [www.nmajh.org](http://www.nmajh.org)

### Arden Theatre Company



The acclaimed Arden Theatre Company brings the spirit of performance to Philadelphia. The stage features productions of classics, music, dramas,

epics and more. As a veritable hometown theatre, the Arden harbors a community of artists who paint Philadelphia with a pallet of culture and heritage. For children, the Arden provides theatrical and reading programs to promote literacy in the youth.

Photo: Beyond My Ken/Wikimedia Commons (image cropped)

Address: 40 North 2nd St, Philadelphia

Public Transport: Take Septa R1-R8 trains to Market East Station (11th Street), and transfer to the Market-Frankford Line. The Market-Frankford Line stops at 2nd & Market Street.

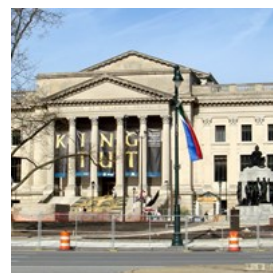
Opening hours: 24 hours in 7 days

Phone: +1 215 922 1122

Internet: [www.ardentheatre.org](http://www.ardentheatre.org)

Email: [boxofficer@ardentheatre.org](mailto:boxofficer@ardentheatre.org)

### The Franklin Institute



Graced by scientific greats like Nikola Tesla and Philo Taylor Farnsworth, The Franklin Institute has been a model for technological

and scientific exploration since 1824. Following the inquisitive spirit of Benjamin Franklin, The Institute has inspired generations of budding scientists and seasoned experts. Internationally

renowned programs, exhibits, discussions and lectures have placed The Franklin Institute on the map for anyone seeking knowledge for the future.

Photo: Bobak Ha'Eri/Wikimedia Commons (image cropped)  
 Address: 222 North 20th St, Philadelphia  
 Public Transport: Suburban Station  
 Opening hours: Every day 9.30am - 5pm  
 Phone: +1 215 448 1200  
 Internet: [www.fi.edu](http://www.fi.edu)  
 Email: [guestservices@fi.edu](mailto:guestservices@fi.edu)

### Citizens Bank Park



Home to the World Series champions Philadelphia Phillies, Citizens Bank Park is a 21-acre, state-of-the-art baseball stadium. Just outside of the stadium is the jubilant Ashburn Alley, where visitors and fans may watch batting practice or study up on Phillies history. The Phillies All-Star Walk, Phillies Wall of Fame and Memory Lane are located in the Alley. The familiar, delectable Philadelphia fare makes its way to Citizens Bank Park as well, reining in such accolades as "Best Ballpark Eats" by the Food Network.

Photo: Phillyfan0419/Wikimedia Commons (image cropped)  
 Address: 1 Citizens Bank Way, Philadelphia  
 Public Transport: 30th street station  
 Phone: +1 215 463 1000  
 Internet: <http://philadelphia.phillies.mlb.com/phi/ballpark/>

### The Barnes Foundation

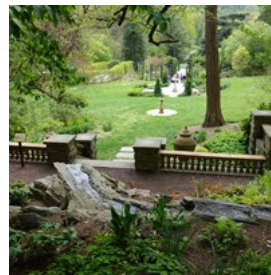


With a mission to promote the "advancement of education and the appreciation of the fine arts," The Barnes Foundation has cultivated the vibrancy of art

since 1922. The collections span impressionism, post-impressionism, modern, African, Pennsylvanian German, Native American and other periods of art. Renoir, Cézanne and Matisse are just several artists to have their masterpieces featured at the Barnes, and there is even a 12-acre plant collection in the Arboretum.

Photo: Smallbones/Wikimedia Commons (image cropped)  
 Address: 2025 Benjamin Franklin Parkway, Philadelphia  
 Public Transport: 30th street station  
 Opening hours: Wed - Mon 10am - 5pm  
 Phone: +1 215 278 7000  
 Internet: [www.barnesfoundation.org](http://www.barnesfoundation.org)  
 Email: [info@barnesfoundation.org](mailto:info@barnesfoundation.org)

### Morris Arboretum



Championing education and community through the horticultural experience, the Morris Arboretum is 92 acres of fantastical gardens.

There are 12,000 flowers, plants and trees all featuring labels, and tours are offered during the spring and fall. The Arboretum encourages you to explore the canopy walk, where a newfound appreciation for nature is sure to incur from the Tree Adventure exhibit.

Photo: Daderot/Wikimedia Commons (image cropped)  
 Address: 100 E. Northwestern Avenue, Philadelphia  
 Public Transport: Germantown Avenue & Northwestern Avenue stop  
 Opening hours: Every day 10am - 4pm  
 Phone: +1 215 247 5777  
 Internet: [www.morrisarboretum.org](http://www.morrisarboretum.org)  
 Email: [info@morrisarboretum.org](mailto:info@morrisarboretum.org)

## Philadelphia Zoo



The Philadelphia Zoo was the nation's first zoo—yes, the first. During its first year in 1874, the zoo drew a respectable crowd of over 228,000 people. Now, approximately 1.2 million people make the Philadelphia Zoo a prime destination. There are more than 1,300 rare and endangered animals, and the zoo even offers balloon rides, camel safaris, swan boats and much more.

Photo: Postdlf/Wikimedia Commons (image cropped)

Address: 3400 W Girard Avenue, Philadelphia

Public Transport: Septa via the 38 bus and the route 15 trolley.

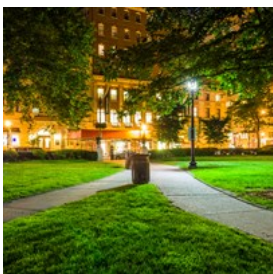
Opening hours: Every day of the year except holidays.

Phone: +1 215 243 1100

Internet: [www.philadelphiazoo.org](http://www.philadelphiazoo.org)

Email: [webkeeper@phillyzoo.org](mailto:webkeeper@phillyzoo.org)

## Rittenhouse Square



Rittenhouse Square is a local favorite for relaxation amongst the reflecting pool, balustrade, classically designed urns, and ornamental lampposts. Grand oaks, maples, locusts and other trees provide tranquil shade, while the flowerbeds are ablaze with color. Flower markets and art exhibits are held annually, and the night time brings many to the restaurants, bars and clubs located along Rittenhouse Square.

Photo: Jon Bilous/Shutterstock.com

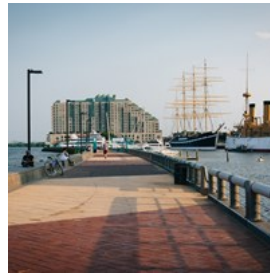
Address: 18th and Walnut St, Philadelphia

Public Transport: 15th St Trolley Station

Phone: +1 215 636 1666

Internet: [www.visitphilly.com/museums-attractions/philadelphia/rittenhouse-square-park/](http://www.visitphilly.com/museums-attractions/philadelphia/rittenhouse-square-park/)

## Penn's Landing



Located on the Delaware River Waterfront, Penn's Landing is home to seasonal kayaking, swan boats, boat parades and festivities associated with National Marina Day. Visitors may explore the historical Olympia and Becuna vessels, and stop for a bite to eat at the Moshulu restaurant.

Photo: Jon Bilous/Shutterstock.com

Address: 121 N. Columbus Boulevard, Philadelphia

Public Transport: Take the SEPTA Market-Frankford Elevated Line (the Blue line) to the Second Street Stop. From there, head East over the Market Street Bridge. The Blue Cross RiverRink and Great Plaza at Penn's Landing will be straight ahead.

Phone: +1 215 629 3200

Internet: [www.delawareriverwaterfront.com](http://www.delawareriverwaterfront.com)

Email: [info@drwc.org](mailto:info@drwc.org)

## The Kimmel Center For The Performing Arts



The Kimmel Center for the Performing Arts showcases everything from jazz, world and classical music to premier Broadway performances. Its location in the heart of Philadelphia makes the Center easily accessible for a day or night of lasting entertainment.

Photo: aerogondo2/Shutterstock.com

Address: 1500 Walnut St, Philadelphia

Public Transport: walnut st. station

Opening hours: Every day 9am - 8pm

Phone: +1 215 790 5800

Internet: [www.kimmelcenter.org](http://www.kimmelcenter.org)

Email: [patronservices@ticketphiladelphia.org](mailto:patronservices@ticketphiladelphia.org)

## DINING



*Rawpixel.com/Shutterstock.com*

Both traditional and BYOB restaurants line the streets of Philadelphia, giving way to the city's eclectic dining options. A melting pot of cultures means that Philadelphia is perfect for finding even the smallest of venues. Intimate riverfront views and spacious neighborhood grills are just two of the city's dining themes.

### Lacroix at the Rittenhouse



Positively riddled with accolades and praise for its peerless cuisine and style, Lacroix at the Rittenhouse is far more than a fine dining experience. Paired with the Progressive International fare, the wine cellar, bar and boutique for confections all makes Lacroix the marquee restaurant for breakfast, brunch, lunch or dinner. The ambiance soothes with candlelight and contemporary glass and wood designs, all overlooking the resplendent Rittenhouse Square.

Photo: Monkey Business Images/Shutterstock.com  
 Address: 210 West Rittenhouse Square, Philadelphia  
 Public Transport: 30th st. Trolley station  
 Opening hours: Mon - Fri 6.30am - 9.30pm, Sat - Sun 7am - 10pm  
 Phone: +1 215 790 2533  
 Internet: [www.lacroixrestaurant.com](http://www.lacroixrestaurant.com)  
 Email: [AStern@rittenhousehotel.com](mailto:AStern@rittenhousehotel.com)

### El Vez



For the best local tex mex, stop by El Vez and go all out on tacos, nachos and quesadilla. Frequent visitors recommend you try the guacamole and the blood orange margarita. Another good suggestion is the taco sampler, which allows you to try a few flavors at once.

Photo: stockcreations/Shutterstock.com  
 Address: 121 S 13th St, Philadelphia  
 Public Transport: Walnut St & 13th St  
 Opening hours: Mon - Thu 11.30am - 11pm Fri - sat 11.30am - 12pm Sun 11am - 10pm  
 Phone: +1 215 928 9800  
 Internet: [www.elvezrestaurant.com](http://www.elvezrestaurant.com)  
 Email: [starr.info@starr-restaurant.com](mailto:starr.info@starr-restaurant.com)

### Paesano's Philly Style



Featured on "Throw Down" with Bobby Flay and "The Layover" with Anthony Bourdain, Paesano's serves Italian cuisine—and not to mention the citywide famous Philly-style sandwiches. Other dishes served in the cozy setting include lamb sausage, pannelle pancakes, diavolo and more.

Photo: Kzenon/Shutterstock.com  
 Address: 148 West Girard Avenue, Philadelphia  
 Opening hours: Every day 11am - 7pm  
 Phone: +1 215 886 9556  
 Internet: [www.paesanophillystyle.com](http://www.paesanophillystyle.com)



## Pumpkin



Whimsically designed dishes and a Sunday five course prix fixe menu set Pumpkin Restaurant apart from the rest. With fresh local ingredients, the menu changes daily, lending to the intimate atmosphere. The menu dazzles with dishes like beef cheek and scallops presented on a bed of squid ink orzo with chorizo. It should be noted that this is a BYOB and cash-only establishment.

Photo: RBerger/Shutterstock.com

Address: 1713 South St, Philadelphia

Public Transport: 19th St Trolley Station

Opening hours: Tue - Sat 5.30pm - 10pm, Sun 5pm - 10pm

Phone: +1 215 545 4448

Internet: [www.pumpkinphilly.com/restaurant](http://www.pumpkinphilly.com/restaurant)

Email: [admin@pumpkinphilly.com](mailto:admin@pumpkinphilly.com)

More Info: Only accepts cash

## Chart House Philadelphia



Merely a stone's throw from the convention center and historic areas, Chart House Philadelphia provides guests with a breathtaking view of the

Penn's Landing waterfront. The Contemporary American cuisine is adept for fine dining, from catch-of-the-day seafood dishes to the decadently-draped desserts. Happy hour and wine menus are also featured.

Photo: [images.etc/Shutterstock.com](http://images.etc/Shutterstock.com)

Address: 555 South Columbus Boulevard, Philadelphia

Public Transport: 8th and market

Opening hours: Mon - Thu 5pm - 9pm, Fri - Sat 5pm - 10pm, Sun 2.30am - 9pm

Phone: +1 215 625 8383

Internet: [www.chart-house.com](http://www.chart-house.com)

## Buddakan



Adorned in the streamlined, meditative décor formerly only found in fantasy, Buddakan is Philadelphia's premier venue for Modern Asian cuisine and transcendent ambiances. A golden statue of Buddha overlooks the main dining room as patrons feast on succulent Wasabi Tuna Tataki or Tea Smoked Spare Ribs. Always, Buddakan offers fine, Asian Fusion dining.

Photo: [garetsworkshop/Shutterstock.com](http://garetsworkshop/Shutterstock.com)

Address: 325 Chestnut St, Philadelphia

Public Transport: 4th st & Chestnut st

Opening hours: Mon - Fri 11.30am - 2.30pm, 5pm - 11pm, Sat 5pm - 12am, Sun 4pm - 10pm

Phone: +1 215 574 9440

Internet: [www.buddakan.com](http://www.buddakan.com)

Email: [starr.info@starr-restaurant.com](mailto:starr.info@starr-restaurant.com)

## Alma de Cuba



Truly channeling the soul of Cuba, Alma de Cuba is a taste of Miami right in Philadelphia. Chef Douglas Rodriguez has made appearances on

Good Morning America, The Today Show, and even Late Night with David Letterman, as well as features in numerous national publications. Rodriguez serves guests scintillating Cuban and Latin flavors, with dinner, lounge, dessert, wine, cocktail, beer and gluten free menus. The atmosphere is warm with a palette of creams and reds.

Photo: [wavebreakmedia/Shutterstock.com](http://wavebreakmedia/Shutterstock.com)

Address: 1623 Walnut St, Philadelphia

Public Transport: Walnut st & 17th st

Opening hours: Mon - Thu 4pm-11pm, Fri - Sat 4pm - 12am, Sun 4pm - 10pm

Phone: +1 215 988 1799

Internet: [www.almadecubarestaurant.com](http://www.almadecubarestaurant.com)

Email: [feedback@starr-restaurant.com](mailto:feedback@starr-restaurant.com)

## The Capital Grille



The Capital Grille has various national locations, but Philadelphia seems to raise the bar for downtown fine dining.

Only seconds from City Hall, the regality of Philadelphia is captured in the Capital Grille. The meat is dry aged to perfection, and the seafood leaves guests wanting any one of the wide selections of wine from Capital Grille's award-winning wine list. A "special menu" is also in house.

Photo: Kris Wiktor/Shutterstock.com

Address: 1338-46 Chestnut St, Philadelphia

Public Transport: 13th st station

Phone: +1 215 545 9588

Internet: [www.thecapitalgrille.com](http://www.thecapitalgrille.com)

## Zahav



Inspired by Chef and owner Michael Solomonov, Zahav Restaurant encompasses the flair and taste of Israeli, Mediterranean

and Middle Eastern cuisine. Open-coal cooking is sure to impress, and an extensive drink list offers wines from all over the world.

Photo: szefei/Shutterstock.com

Address: 237 Street James Place, Philadelphia

Public Transport: 2nd st station

Opening hours: Sun - Thu, 5 - 10pm Fri & Sat, 5 - 11pm

Phone: +1 215 625 8800

Internet: [www.zahavrestaurant.com](http://www.zahavrestaurant.com)

Email: [info@zahavrestaurant.com](mailto:info@zahavrestaurant.com)

## Marmont



Marmont's is a steakhouse offering seven customizable cuts that are all carved onsite. The seafood, whether imported or catch-of-the-day, is handpicked in order to ensure exceptional quality and taste. Choose drinks from the international wine, beer and cocktail lists, or one of their 30 signature martinis.

Photo: alex saberi/Shutterstock.com

Address: 222 Market Street, Philadelphia

Public Transport: Market- Frankford Line, just half a block away at 2nd and Market

Opening hours: Mon - Sat 4pm - 11pm Sun 3pm - 10pm

Phone: +1 215 923 1100

Internet: [www.marmont.net](http://www.marmont.net)

Email: [info@marmont.net](mailto:info@marmont.net)

## Amada



Bowing to the 800-year-old tradition of Spanish tapas, Amada respects the abundance of flavors and ingredients required to create

authentic tapas. Chef and founder Jose Garces infuses his passion for Mediterranean and Atlantic flavors into every dish. The décor and design of Amada transports guests back to 13th century Spain, when the Castilian King, Alfonso The Wise, began the tradition of Spanish tapas.

Photo: ARTRAN/Shutterstock.com

Address: 217-219 Chestnut St, Philadelphia

Public Transport: one block south and ½ block west of the 2nd Street stop on the Market-Frankford line.

Opening hours: Every day 11.30 - 10pm

Phone: +1 215 625 2450

Internet: [www.philadelphia.amadarestaurant.com](http://www.philadelphia.amadarestaurant.com)

## Tommy DiNic's



Serving as home to the Travel Channel's pick for Adam Richman's "best sandwich in America," Tommy DiNic's is

positioned in Reading Terminal Market—accounting for its constant stream of hungry patrons! The sandwiches, hot roast beef, pork and meatball, are made fresh daily, the toppings are raved about. The broccoli rabe is a local favorite.

Photo: VGstockstudio/Shutterstock.com

Address: North 12th St, Philadelphia

Public Transport: Arch St & 12th st

Opening hours: Tue - Sat 9am - 6pm, Sun - Mon 9am - 4pm

Phone: +1 215 923 6175

Internet: [www.tommydinics.com](http://www.tommydinics.com)

More Info: Reading Terminal Market

## Tinto



Crafted from the grain of Chef Jose Garces' Northern Spanish panache, Tinto serves Basque fare with Garces' own culinary inspirations.

The menu features cheeses, shellfish, sandwiches, borchettes and charcuterie.

Photo: ne3p/Shutterstock.com

Address: 114 South 20th Street, Philadelphia

Public Transport: 20th st & Chestnut st

Opening hours: Every day 5pm - 10pm

Phone: +1 215 665 9150

Internet: [www.tintorestaurant.com](http://www.tintorestaurant.com)

## Morimoto



Chef Masaharu Morimoto was featured on Iron Chef with good reason.

Morimoto's serves Modern Japanese fare in a new, thrilling light. The

multi-coursed tasting menu allows guests to partake in the dining experience beforehand and is always Chef's Choice. The interior design can hardly be captured in words, for each room bids adieu to conformity and conjures futuristic, neo-Japanese style and flair.

Photo: Kzenon/Shutterstock.com

Address: 723 Chestnut St, Philadelphia

Public Transport: 8th st & Chestnut st

Opening hours: Lunch mon - fri 11.30am - 2pm Dinner sun - thu 5pm - 10pm fri - sat 5pm - 12pm

Phone: +1 215 413 9070

Internet: [www.morimotorestaurant.com](http://www.morimotorestaurant.com)

Email: [morimotopa@starr-restaurant.com](mailto:morimotopa@starr-restaurant.com)

## CAFES



Linda Hughes/Shutterstock.com

From traditional favorites like the Philly-style sandwiches to delicacies, Philadelphia cafes serve more than coffee and croissants. Good music, a friendly ambiance and great city views are some of the things to count on on a night out.

### The Couch Tomato Café



Intimate, wooded seating and delicious cuisine make the Tomato Bistro the quintessential café experience. The pizza is gourmet and

award-winning, often served alongside drinks from the distinctive beer and wine list. Daily specials run for meals and drinks.

Photo: puhhha/Shutterstock.com

Address: 102 Rector St, Philadelphia

Public Transport: R6 Septa Train

Opening hours: Every day 11am - 10pm

Phone: +1 215 483 2233

Internet: [www.thecouchtomato.com](http://www.thecouchtomato.com)

Email: [craig@thecouchtomato.com](mailto:craig@thecouchtomato.com)

More Info: At the corner of Main Street

### White Dog Café



White Dog Café in Philadelphia commits to serving delicately fashioned, Contemporary American fare.

Farm-raised ingredients and products are bought locally, and the menus are seasonal. Organic dishes include small and medium plates, market salads, handmade pasta, entrees and seasonal sides, all under the conduction of Executive Chef Zach Grainda. Along with the University City location, there is also a White Dog in Wayne.

Photo: VikaGeyder/Shutterstock.com

Address: 3420 Sansom St, Philadelphia

Phone: +1 215 386 9224

Internet: [www.whitedog.com](http://www.whitedog.com)

Email: [universitycity@whitedog.com](mailto:universitycity@whitedog.com)

### Sabrina's Café



With three Philadelphia locations, Sabrina's Café at Powelton is the only one that is not BYOB. The menu is impressively varied, from New and

Traditional American, Vegan and Vegetarian dishes, to Greek and Mediterranean, Mexican and Soul Food. Daily specials are offered at brunch and dinner.

Photo: Alex Couto/Shutterstock.com

Address: 227 N 34th St, Philadelphia

Phone: +1 215 222 1022

Internet: [www.sabrinascafe.com](http://www.sabrinascafe.com)

### Victor Café



Only in Philly can your servers also be opera singers! As the "music lover's rendezvous," Victor Café features a wait staff that performs

classical ballads and songs for guests. The cuisine is Traditional Italian, as well as crafted dishes from the executive chef. A prix fixe menu is available online for viewing.

Photo: Eight Photo/Shutterstock.com

Address: 1303 Dickinson St, Philadelphia

Public Transport: Tasker/Morris Stop off the Broad Street Line

Opening hours: Mon - Thu 5pm - 10pm, Fri 5pm - 12am, Sat 4.30pm - 12am, Sun 4.30pm - 10pm

Phone: +1 215 468 3040

Internet: [www.victorcafe.com](http://www.victorcafe.com)

Email: [victorcafe@victorcafe.com](mailto:victorcafe@victorcafe.com)

### Isgro Pastries



Isgro Pastries has been operating in Philadelphia since 1904, gracing locals and visitors with their acclaimed cannoli and confections. So many find themselves coming for a cannoli but leaving with a collection of cookies, assorted pastries and mini specialties. Isgro's also crafts stunning cakes and holiday delights.

Photo: Shebeko/Shutterstock.com

Address: 1009 Christian St, Philadelphia

Public Transport: 11th st & Christian st

Opening hours: Mon, Thru, Sat 8 - 6pm, Sun 8 - 4pm

Phone: +1 215 923 3092

Internet: [www.bestcannoli.com](http://www.bestcannoli.com)

Email: [info@bestcannoli.com](mailto:info@bestcannoli.com)

### Di Bruno Bros



Sitting atop the Di Bruno Bros store in Rittenhouse Square is the Upstairs Café. Weekend brunches are offered from 10am to 3pm, and daily lunches are from 11am to 3pm. The coffee and espresso bar opens at 7am daily.

Photo: YKTR/Shutterstock.com

Address: 1730 Chestnut St, Philadelphia

Public Transport: SEPTA Subway, Buses or Regional Rail lines.

Opening hours: Mon - Fri 7am - 8.30pm, Sat 7am - 8pm, Sun 7am - 7pm

Phone: +1 215 665 9220

Internet: [www.dibruno.com](http://www.dibruno.com)

Email: [customerservice@dibruno.com](mailto:customerservice@dibruno.com)

### Talula's Garden



Dressed in the fancy of its surrounding Washington Square is Tulula's Garden. A cheery disposition accompanies the menu of Modern and European cuisine, much like its founder and owner Aimee Olexy. The dishes are always current with the ingredients of the season, and the atmosphere is friendly.

Photo: Stepanek Photography/Shutterstock.com

Address: 210 W. Washington Square, Philadelphia

Phone: +1 215 592 7787

Internet: [www.talulasgarden.com](http://www.talulasgarden.com)

### The Adobe Café



There are two Philadelphia locations for Adobe Café. Both specialize in authentic Mexican cuisine and fare of the Southwest. Spacious availability at 300 seats encompasses two bars, outdoor patios and dining rooms.

Photo: Magdanatka/Shutterstock.com

Address: 4550 Mitchell St, Philadelphia

Phone: +1 215 483 3947

Internet: [www.adobecafe Philly.com](http://www.adobecafe Philly.com)

Email: [adobecafe@msn.com](mailto:adobecafe@msn.com)

### Saad's Halal Restaurant



Saad's Halal boasts of authentic halal dishes. It has become a local favorite— with meat platters, chicken maroush (long sandwich), shawarma, falafel and cheese steak being top sellers. Vegetarian menu available.

Photo: Martin Rettenberger/Shutterstock.com

Address: 4500 Walnut Street, Philadelphia

Opening hours: Mon - Thu 11am - 9pm, Fri - Sat 11am - 10pm

Phone: +1 215 222 7223

Internet: www.saadhalal.com

### Sam's Morning Glory Diner



Bringing the simple pleasures of good coffee and delicious food, Morning Glory welcomes guests to enjoy homemade treats from

their menu made up of dishes with locally-grown ingredients. Stewed apples and biscuits with homemade jam will be sure to entice.

Photo: Legend\_art/Shutterstock.com

Address: 10th and Fitzwater St, Philadelphia

Public Transport: Broad Street Subway to South Street Stop

Opening hours: Mon - Fri 7am - 3pm, Sat - Sun 8am - 3pm

Phone: +1 215 413 3999

Internet: www.themorningglorydiner.com

Email: morningglorydiner@verizon.net

### BARS & NIGHTLIFE



Africa Studio/Shutterstock.com

The night scene in Philadelphia meshes bars serving great craft beers and haute venues with panache. Comfy pubs, refined grilles, dance clubs and modern lounges give the city a new life in the after-hours.

### Tavern On Broad



Located in the heart of Center City beneath the Bellevue on the Corner of Broad and Walnut Streets, Tavern on Broad offers guests a true fan

experience. With 34 HDTVs, there is not a bad seat in the house. Come and enjoy cold beer and great food. A favorite spot for private party and special event offering.

Photo: g-stockstudio/Shutterstock.com

Address: 200 South Broad St, Philadelphia

Public Transport: Broad Street steps away from the Broad Street line, and around the corner from the Patco entrance

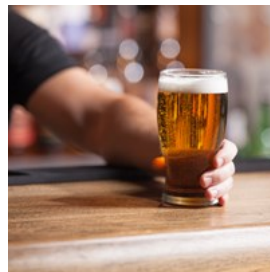
Opening hours: Sun - Thu 11am - 2am Fri - Sat 11am - 2am

Phone: +1 215 546 2290

Internet: www.tavernonbroad.com

Email: neinal@tavernonbroad.com

### McFadden's



The venue is practically a landmark - McFadden's is by far the most dynamic destination in Philadelphia, and heralded as the city's

prime party places. The legendary bar staff, fantastic menu, and convenient location combine to create the ultimate experience for you, your friends and family.

Photo: BlueSkyImage/Shutterstock.com

Address: 1 Citizens Bank Way, Philadelphia

Opening hours: Daily 11am-2am

Phone: +1 215 952 0300

Internet: www.mcfaddensphilly.com

Email: kellyf@mcfaddensphilly.com

## Dusk



Dusk has been voted Best Place to Spot a Celebrity and Best Bottle Service three years in a row, with notable celebs such as Nicky Hilton, Rob

Kardashian, Alessandra Ambrosio, Charlie Hunnam, and Brody Jenner seen partying in one of the private VIP booths. Dusk is also one of the world's leading venues for live performances with the likes of the Black Eyed Peas, LMFAO, Sean Kingston, and MYA gracing the Dusk stage. Whether you are looking for a private bottle service experience, a girls-weekend bachelorette party, a corporate or private event, Dusk Nightclub is the perfect venue.

Photo: Evgeny Starkov/Shutterstock.com  
 Address: 2100 Pacific Ave, Atlantic City, NJ  
 Public Transport: 22nd St & Venango St  
 Phone: +1 609 345 3875  
 Internet: [www.duskac.com](http://www.duskac.com)  
 Email: [info@duskac.com](mailto:info@duskac.com)  
 More Info: Located at Caesar's Atlantic City

## Bob & Barbara's Lounge



Known as a Philly bar classic that never goes out of style, this location is where you go to get "The Special" (a shot of Jim Bean and a Pabst Blue Ribbon beer) and listen to live blues.

Photo: Nejrion Photo/Shutterstock.com  
 Address: 1509 South St, Philadelphia  
 Opening hours: Mon - Sun 3pm - 2am  
 Phone: +1 215 545 4511  
 Internet: [www.bobandbarbaras.com](http://www.bobandbarbaras.com)

## Tattooed Mom



With its graffiti-dominated interior, pool table and jukebox, this venue is the perfect place to relax and unwind, as well as end a long night out - the waffle fries at 1am will surely help make it a great one.

Photo: Denis Rozhnovsky/Shutterstock.com  
 Address: 530 South St, Philadelphia  
 Public Transport: South st & 6th st  
 Opening hours: Mon - Sun 12pm - 2am  
 Phone: +1 215 238 9880  
 Email: [tattooedmomphilly@gmail.com](mailto:tattooedmomphilly@gmail.com)

## Cuba Libre Restaurant & Rum Bar



This venue makes for an entertaining night out, primarily thanks to it being designed to resemble an old Havana street. Other Cuban

motifs are to be expected as well, be it Latin rhythms, rum-based cocktails or culinary delights.

Photo: Ivan Mateev/Shutterstock.com  
 Address: 10 S 2nd St, Philadelphia  
 Public Transport: Second Street at Market Street in the Old City section of Philadelphia. Accessible by the Market Frankford Line at the 2nd Street stop.  
 Phone: +1 215 627 0666  
 Internet: [www.cubalibrerestaurant.com](http://www.cubalibrerestaurant.com)  
 Email: [info@cubalibrerestaurant.com](mailto:info@cubalibrerestaurant.com)

## The 700



Located inside a former home of a poultry butcher, this place is authentic to say the least - the bathroom has been converted into a DJ room

while still retaining some signs of its past purpose. Head to the dance floor upstairs or just hang out and enjoy the skillfully crafted cocktails down below.

Photo: Patrizia Tilly/Shutterstock.com

Address: 700 N 2nd St, Philadelphia

Public Transport: Fairmount Av & 2nd st

Opening hours: Mon - Sun 3.30pm - 2am

Phone: +1 215 413 3181

Internet: www.the700.org

Email: the700phila@gmail.com

More Info: No cover charge

### The Barbary



It truly is hard to find a musical taste not catered to at this venue - The Barbary is known for its alternating parties featuring everything from 80s hits to goth, metal, punk and, of course, indie. Check the schedule to see what's on.

Photo: dmitrymoi/Shutterstock.com

Address: 951 Frankford Ave, Philadelphia

Public Transport: Frankford Av

Opening hours: Thu - Mon 10pm - 2am

Phone: + 1 215 634 7400

Email: jhnrdn@gmail.com

### Tria



Featuring two Philadelphia locations, Tria Cafe proudly serves one of mankind's most savory trios: wine, cheese and beer. The products are a combination of global and local finds, and the fermentation menus evolve with the best ingredients. The cuisine is European.

Photo: Rustle/Shutterstock.com

Address: 1137 Spruce Street, Philadelphia

Public Transport: Market st & 11th st

Opening hours: Mon - Sun 12pm - 2am

Phone: +1 215 629 9200

Internet: www.triacafe.com

Email: info@triacafe.com

More Info: Further location on Rittenhouse Square

### New Deck Tavern



With a more than comfortable supply of international draft beers and fine liquors, the New Deck tavern is perfect for unwinding after a day of sightseeing. Tasty burgers, cheese steaks, salads, sandwiches and more are served daily from 11am until 1am, and happy hour is a favorite. Karaoke and live acoustic music events are held throughout the week, and soccer matches from Europe are shown on the high definition televisions.

Photo: Africa Studio/Shutterstock.com

Address: 3408 Sansom St, Philadelphia

Public Transport: The SEPTA Market-Frankford Blue line has a stop at 34th Street

Opening hours: Every day 11am - 2am

Phone: +1 215 386 4600

Internet: www.newdecktavern.com

Email: staff@newdecktavern.com

### Silk City Lounge



A fresh outdoor patio and diner-style, New American cuisine can be found at Silk City. The selection of beer includes both imports and American names, and the atmosphere is entirely stress-free.

Photo: oneinchpunch/Shutterstock.com

Address: 435 Spring Garden St, Philadelphia

Public Transport: Spring garden st & 5th st



Opening hours: Every day 10am - 3.30am  
 Phone: +1 215 592 8838  
 Internet: [www.silkcityphilly.com](http://www.silkcityphilly.com)  
 Email: [silkcityphilly@gmail.com](mailto:silkcityphilly@gmail.com)

### Chris' Jazz Café



Chris' Jazz Café is a charming venue for live jazz, good food and great drinks. With a smaller space, the interior gives guests that intimate feel of 1950s era jazz bars. Shows are Monday through Saturday, as the establishment is closed on Sundays.

Photo: Lasse Ansaharju/Shutterstock.com  
 Address: 1421 Sansom St, Philadelphia  
 Public Transport: Chestnut st & 15th st  
 Opening hours: Mon - Sat 11am - 2pm  
 Phone: +1 215 568 3131  
 Internet: [www.chrisjazzcafe.com](http://www.chrisjazzcafe.com)  
 Email: [chrisjazzcafe@comcast.net](mailto:chrisjazzcafe@comcast.net)

### Monk's Café



Monk's Cafe is also a "Belgian beer emporium" and restaurant. Owners Tom Peters and Fergus Carey are true beer connoisseurs, even suggesting that guests use the "Beer Bible" as a guide to determine which beer would suit their palate. The beer list is appropriately hefty, including selections from around the world and America, both on tap and by the bottle. Monk's also serves appetizers, salads, burgers, mussels, sandwiches and larger plates all with quality taste and service.

Photo: Brent Hofacker/Shutterstock.com  
 Address: 264 S.16th St, Philadelphia  
 Public Transport: 16th st & spruce st  
 Opening hours: Every day 11.30am - 2am

Phone: +1 215 545 7005  
 Internet: [www.monkscafe.com](http://www.monkscafe.com)

### Barcade



Barcade is a celebration of craft beer and good, arcade fun. Classic arcade and video games may be played while enjoying the selection of American craft beer. The kitchen serves American cuisine with traditional staples like bratwursts, sandwiches, burgers and more. Daily specials and hours are listed online.

Photo: Joshua Resnick/Shutterstock.com  
 Address: 1114 Frankford Avenue, Philadelphia  
 Public Transport: Frankford Av & Girard Av  
 Opening hours: Mon - Thu 3pm - 2am Fri, Sat & Sun 12pm - 2am  
 Phone: +1 215 634 4400  
 Internet: [www.barcadephiladelphia.com](http://www.barcadephiladelphia.com)  
 Email: [info@barcadephiladelphia.com](mailto:info@barcadephiladelphia.com)

### The Lounge



Taking up residence within Four Seasons Philadelphia, The Lounge deviates from the typical café to bring elegance and élan to guests. Set among a grand fireplace and possessing marble tables, wood accenting and luscious fabrics, The Lounge champions one of Philadelphia's leading scotch and cognac selections. Afternoon tea is a must, as well as a dip into the spectacular dessert menu.

Photo: maggee/Shutterstock.com  
 Address: 1625 Cecil B. Moore Ave. Philadelphia  
 Public Transport: Broad St & Cecil Moore Av  
 Phone: +1 973 980 7600  
 Internet: [www.theloungephilly.com](http://www.theloungephilly.com)

## Manyunk Brewing



Deriving its name from the Lenape word for “place where we drink,” Manayunk is a friendly venue with both indoor and outdoor seating.

From the main dining room, jazz room, patio, deck, river club bar, river club dining room, upper deck, tiki bar and outside cocktail area, patrons take their pick of Manayunk’s award-winning beer. In conjunction with the fresh-brewed selections, the menu serves produce, meats, seafood and baked goods.

Photo: Valentyn Volkov/Shutterstock.com

Address: 4120 Main St, Philadelphia

Public Transport: Regional Rail Line R6 Bus Routes 61 and 62

Opening hours: Mon - Wed 11am - 11pm, Thu 11am - 1am,

Fri - Sat, 11am - 2am, Sun 10.30 - 11pm

Phone: +1 215 482 8220

Internet: [www.manayunkbrewery.com](http://www.manayunkbrewery.com)

Email: [info@manayunkbrewery.com](mailto:info@manayunkbrewery.com)

## Tin Angel Acoustic Café



Tin Angel has a spirit of its own. As an acoustic café it serves fantastic coffees, cappuccinos, teas and desserts, along with splendid unplugged

music. Ranging anywhere from blues, folk, country and rock, the acoustic entertainment is always as fresh as the international cuisine. Tin Angel has a selection of wines, beers, liquors and mineral waters, and has become a nationally acclaimed club.

Photo: PopTika/Shutterstock.com

Address: 20 South 2nd St, Philadelphia

Opening hours: 2nd st station

Phone: +1 215 928 0770

Internet: [www.tinangel.com](http://www.tinangel.com)

Email: [tinangelphilly@gmail.com](mailto:tinangelphilly@gmail.com)

## Cavanaugh’s Headhouse Square



Cavanaugh’s Headhouse is replete with five bars that are all available for private events. Games from European soccer leagues and competitions are shown during the season, and there are eight dart boards. Also in-house are craft bottled beers and whiskey selections.

Photo: Khakimullin Aleksandr/Shutterstock.com

Address: 421 S. 2nd St, Philadelphia

Public Transport: Pine st & 2nd st

Opening hours: Mon - Thu 3pm - 2am, Fri 11am - 2am, Sat - Sun 8am - 2am

Phone: +1 215 928 9307

Internet: [www.cavsheadhouse.com](http://www.cavsheadhouse.com)

Email: [info@cavsheadhouse.com](mailto:info@cavsheadhouse.com)

## SHOPPING



[gpointstudio/Shutterstock.com](http://gpointstudio/Shutterstock.com)

Sweet confections, shopping malls, vogue boutiques and farmers markets are all found along the streets of Philadelphia. Many are conveniently located in Center City and its surrounding areas.

## Macy's Philadelphia



Macy's Philadelphia is both a shopping trip and a stroll through history. Close to a century of retailing history and experience makes Macy's

Center City the premier shopping destination in Philadelphia. Located in the Wanamaker building, Macy's also puts on concerts from the St. Louis World's Fair Pipe Organ twice a day. The Center City has all of the familiar brands, from DKNY, Hugo Boss, Polo Ralph Lauren and Tommy Hilfiger, to Coach, Levi's and Calvin Klein.

Photo: racorn/Shutterstock.com

Address: 1300 Market St, Philadelphia

Public Transport: 13th st station

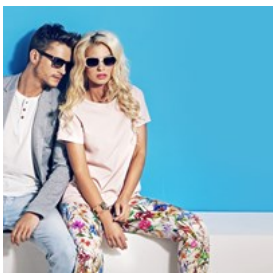
Opening hours: Mon - Sat 10am - 8pm, Sun 11am - 7pm

Phone: +1 215 241 9000

Internet: [www.visitmacysphiladelphia.com](http://www.visitmacysphiladelphia.com)

Email: [Visitphiladelphia@macys.com](mailto:Visitphiladelphia@macys.com)

## Sugarcube



Sugarcube is a downtown-chic store with a mix of established and up-and-coming designers for men and women. Here you will find American

and International clothing and accessory collections. This amazing gem has received 'Best of Philly' award from Philadelphia Magazine's six times.

Photo: conrado/Shutterstock.com

Address: 124 N. 3rd St, Philadelphia

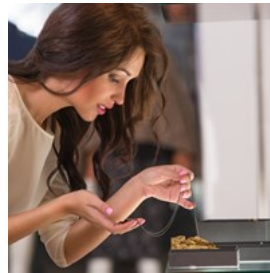
Public Transport: Market St & 2nd St

Opening hours: Mon 11am - 7pm, Tue - Sat 12pm - 7pm, Sun 12pm - 5pm

Phone: +1 215 238 0825

Internet: [www.sugarcube.us](http://www.sugarcube.us)

## Tiffany & Co.



With boutiques around the world and paid tribute in novels, movies, and memoirs, Tiffany & Co is one of those brands that need no introduction.

Inside you will see why people love Tiffany's. From diamonds to sapphires to simple charms and necklaces, Tiffany's jewelry and accessories will certainly enchant you.

Photo: Milles Studio/Shutterstock.com

Address: 1414 Walnut St, Philadelphia

Public Transport: Walnut st & 15th st

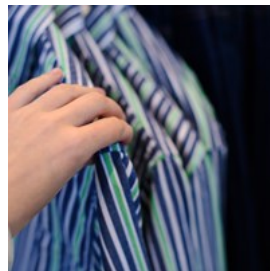
Opening hours: Mon - Sat 10am - 7pm, Sun 12pm - 6pm

Phone: +1 215 735 1919

Internet: [www.tiffany.com](http://www.tiffany.com)

Email: [philadelphia@tiffany.com](mailto:philadelphia@tiffany.com)

## Armour Philadelphia



Nestled in the heart of Philadelphia's historic Fabric Row, the boutique Armour Philadelphia features classic menswear staples

including shirts, trousers, jackets, ties and denim from innovative brands. The friendly and helpful staff are ready to create a modern, clean and smart look for you.

Photo: MrTrush/Shutterstock.com

Address: 704 South 4th St, Philadelphia

Public Transport: 4th St & Walnut St

Internet: [www.armourphiladelphia.com](http://www.armourphiladelphia.com)

Email: [info@armourphiladelphia.com](mailto:info@armourphiladelphia.com)

## South Street



This loud, bustling and eclectic street is a Philly must-visit, and not only if you're searching for that perfect new edgy look. Stores and multi-ethnic

restaurants line the street, and quite a few establishments invite to have a taste of the celebrated Philly Cheese Steak.

Photo: Dragon Images/Shutterstock.com

Address: 301 South St, Philadelphia

Public Transport: 4th St & South St

Phone: +1 215 413 3713

Internet: [www.southstreet.com](http://www.southstreet.com)

Email: [info@southstreet.com](mailto:info@southstreet.com)

More Info: Between Front and 10th streets

## Ten Thousand Villages



Shopping at one of this store's locations isn't only a fun activity, but a good deed - all items on sale have been crafted by artists from developing

countries and obtained by rules of fair trade. Selling these items allows artists to build sustainable businesses and plan for the future.

Photo: ChiccoDodiFC/Shutterstock.com

Address: 1122 Walnut St, Philadelphia

Public Transport: Market-Frankford Line to Market East Station, then walk South to Walnut.

Opening hours: Mon - Sat 10am - 7pm, Sun 12pm - 5pm

Phone: +1 215 574 2008

Internet:

[www.tenthousandvillages.com/philadelphia#fndtn-home](http://www.tenthousandvillages.com/philadelphia#fndtn-home)

Email: [philadelphia@tenthousandvillages.com](mailto:philadelphia@tenthousandvillages.com)

## Philly Aids Thrift Shop



Prepare to spend hours digging through this store's treasures if the words "vintage" and "thrift shop" make your heart beat faster. Clothes, vinyls, books, countless accessories and much more await you here, so come with time, enthusiasm and a bit of cash.

Photo: nito/Shutterstock.com

Address: 710 S 5th St, Philadelphia

Public Transport: South St & 5th St

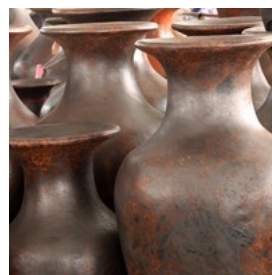
Opening hours: Mon - Thu 11am - 8pm, Fri - Sat 11am - 9pm, Sun 11am - 7pm

Phone: +1 215 922 3186

Internet: [www.phillyaidsthift.com](http://www.phillyaidsthift.com)

Email: [phillyaidsthift@aol.com](mailto:phillyaidsthift@aol.com)

## Material Culture



Though located outside of town, Material Culture is definitely worth the trip for anyone looking to browse through antique furniture and modern

decor items. The museum-like interior of the store makes it a fun visit even for those not planning to buy.

Photo: stacyarturogi/Shutterstock.com

Address: 4700 Wissahickon Ave, Philadelphia

Public Transport: Wissahickon Av & Roberts Av

Opening hours: Every day 11am - 5pm

Phone: +1 215 849 8030

Internet: [www.materialculture.com](http://www.materialculture.com)

Email: [info@materialculture.com](mailto:info@materialculture.com)

### Barnes & Noble



This installment in the nationwide bookstore chain offers seating with a view over Philly's famous Rittenhouse Square. Select a book to your liking and secure a spot overlooking the landmark, or head to the adjacent cafe.

Photo: connel/Shutterstock.com

Address: 1805 Walnut St, Philadelphia

Public Transport: Walnut St & 18th St

Opening hours: Sun 10am - 8pm, Mon - Sat 9am - 10pm

Phone: +1 215 665 0716

Internet: [www.barnesandnoble.com](http://www.barnesandnoble.com)

### Franklin Mills



Ever the trendy shopping locale, Franklin Mills is Philadelphia's largest outlet mall. Over 200 stores are featured to meet every retail whim, including Last Call by Neiman Marcus, Saks Fifth Avenue OFF 5TH, Banana Republic Factory Store and Nike Factory Store. Dining and entertainment centers are found within, and the mall itself is located only minutes from Center City, Bensalem and New Jersey.

Photo: hxdbzxy/Shutterstock.com

Address: 1455 Franklin Mills Circle, Philadelphia

Public Transport: Route 20: Philadelphia Mills to Frankford Transportation Center

Opening hours: Mon - Sat 10am - 9pm, Sun 11am - 7pm

Phone: +1 215 632 1500

Internet: [www.simon.com/mall/philadelphia-mills](http://www.simon.com/mall/philadelphia-mills)

Email: [jahle@simon.com](mailto:jahle@simon.com)

### Arader Galleries



Specializing in antiquarian merchandise, Arader Galleries of Philadelphia is off the beaten path of traditional consumerism. 16th

through 19th century natural history prints, watercolors, maps, atlases, rare literature and more can be found. The items are supplied by private collectors, museums, art consultants and interior designers.

Photo: Denis Kuvaev/Shutterstock.com

Address: 1308 Walnut St, Philadelphia

Public Transport: Walnut St & 13th St

Phone: +1 215 735 8811

Internet: [www.aradergalleries.com](http://www.aradergalleries.com)

Email: [info@aradergalleries.com](mailto:info@aradergalleries.com)

### Shops at Liberty Place



Shopping is at your fingertips right in the middle of the Center City business district. The Shops at Liberty Place is a state-of-the-art urban

retail site. LOFT, J. Crew, Victoria's Secret, Express and Swarovski are just a few names located in house. A food court is included to fuel the shopping.

Photo: gpointstudio/Shutterstock.com

Address: 1625 Chestnut St, Philadelphia

Public Transport: Regional Rail Lines, Broad Street Line, Market-Frankford Line, Busses, Trolleys

Opening hours: Mon - Sat 9.30am - 7pm, Sun 12pm - 6pm

Phone: +1 215 851 9055

Internet: [www.shopsatliberty.com](http://www.shopsatliberty.com)

Email: [sbrown@oneliberty.org](mailto:sbrown@oneliberty.org)

### Antique Row



Encompassing businesses, dining venues, accommodations and shops, Antique Row is its own multifaceted district. For shopping, themes include antiques and vintage, apparel, books and crafts, furniture and even a mask and wig shop.

Photo: MJTH/Shutterstock.com

Address: Pine St, Philadelphia

Phone: +1 215 219 5825

Internet: [www.antique-row.org](http://www.antique-row.org)

Email: [info@antique-row.org](mailto:info@antique-row.org)

More Info: Historic Antique Row is located on Pine Street between Broad and 9th Streets in Downtown Center City Philadelphia.

### Old City District



Serving as a microcosm of greater Philadelphia, the Old City District is a chic favorite for locals and visitors. With over 100 boutiques, OCD provides an array of jewelry, menswear, women's apparel, shoe stores and furniture stores. It has an enticing proximity to hotels and restaurants as well.

Photo: Pressmaster/Shutterstock.com

Address: 231 Market St, Philadelphia

Public Transport: Market St & 2nd St

Opening hours: Mon - Fri 9am - 5pm

Phone: +1 215 592 7929

Internet: [www.oldcitydistrict.org](http://www.oldcitydistrict.org)

Email: [info@oldcitydistrict.org](mailto:info@oldcitydistrict.org)

### Vagabond



Vagabond boutique offers chic fashion for women's apparel. Tops, bottoms, dresses, shoes, jewelry, accessories and even swimwear are available.

Cute home accessories are also sold.

Photo: Blend Images/Shutterstock.com

Address: 37 N. Third St, Philadelphia

Public Transport: 2nd St Station - MFL

Opening hours: Mon - Sat 11am - 7pm, Sun 11am - 5pm

Phone: +1 215 671 0737

Internet: [www.vagabondboutique.com](http://www.vagabondboutique.com)

Email: [vagabond.boutique@gmail.com](mailto:vagabond.boutique@gmail.com)

### Smak Parlour



Hip. Fab. Pretty. Punky. And girly. Smak Parlour chose those adjectives to describe their cute boutique, and quite fittingly. As a "pink Philadelphia boutique,"

Smak Parlour offers women anything from glamorous apparel to glitzy house ware.

Photo: nenetus/Shutterstock.com

Address: 219 Market St, Philadelphia

Public Transport: Market St & 2nd St

Opening hours: Mon - Thu 11am - 7pm Fri & Sat 11am - 8pm, Sun 12pm - 6pm

Phone: +1 215 625 4551

Internet: [www.smakparlour.com](http://www.smakparlour.com)

Email: [smakparlour@gmail.com](mailto:smakparlour@gmail.com)

### Greene Street Consignment



With two Philadelphia locations at Chestnut Street and Manayunk, Greene Street sells and consigns men's and women's clothing, shoes

and accessories. Labels include anything from Gucci to Gap, and new items go to floor daily. As the name implies, Greene Street offers savvy shoppers the opportunity to buy quality brands while helping the environment.

Photo: Axel Bueckert/Shutterstock.com  
 Address: 8524 Germantown Avenue, Philadelphia  
 Phone: +1 267 331 6725  
 Internet: [www.greenestreetstores.com/tt5bk1yuskqxxjpq1rv5q80nsp826c](http://www.greenestreetstores.com/tt5bk1yuskqxxjpq1rv5q80nsp826c)

### Reading Terminal Market



Always the bustling spot, Reading Terminal Market is a historical farmers market located in Center City within Philadelphia. Fresh produce, meats, seafood and poultry, as well as Amish confections are sold at the market every day. Handmade crafts, jewelry and pottery are available from friendly vendors, and diverse cookware and restaurants are also found. If simplicity is your mantra, then pick up a flirty bouquet from one of the many flower stands.

Photo: AnastasiaNess/Shutterstock.com  
 Address: 12th & Arch St, Philadelphia  
 Public Transport: the hub of Philadelphia's mass transit system.  
 Opening hours: Mon - Sat 8am - 6pm, Sun 9am - 5pm  
 Phone: +1 215 922 2317  
 Internet: [www.readingterminalmarket.org](http://www.readingterminalmarket.org)  
 Email: [info@readingterminalmarket.org](mailto:info@readingterminalmarket.org)

### Shane Confectionery



Established in 1863, Shane Confectionery is the oldest, continuously-run confectionery in the nation. All candy is

crafted and handmade on-site, with a changing array of seasonal specials. Proud to uphold the traditions of old-fashioned confections, Shane uses the recipes of its founders.

Photo: JuanSalvador/Shutterstock.com  
 Address: No.110 Market St, Philadelphia  
 Public Transport: Front St & Market St Loop  
 Opening hours: Mon - Thurs 11am-8pm, Fri -Sat 11am-11pm, Sun 11am-9pm  
 Phone: +1 215 922 1048  
 Internet: [www.shanecandies.com](http://www.shanecandies.com)  
 Email: [info@shanecandies.com](mailto:info@shanecandies.com)

### Philadelphia Outlets



A wealth of brands and convenience come standard at the Philadelphia Premium Outlets. There are 150 stores, such as Ann Taylor, BCBG Max Azria, Cole Haan, Guess, Michael Kors and more. Savings events are held weekly.

Photo: LuckyImages/Shutterstock.com  
 Address: 18 West Lightcap Road, Limerick  
 Public Transport: Daily bus service available via Route 93  
 Opening hours: Sun - Wed 10am - 9pm, Thu - Fri - Sat 10am - 9pm  
 Phone: +1 610 495 9000  
 Internet: [www.premiumoutlets.com](http://www.premiumoutlets.com)  
 Email: [kbranch@simon.com](mailto:kbranch@simon.com)

## ESSENTIAL INFORMATION



f11photo/Shutterstock.com

### Philadelphia International Airport



Philadelphia International Airport (PHL) is located 7 miles from downtown Philadelphia. It is the only major airport serving the metropolitan area. PHL is

the second largest hub and primary international hub of US Airways, with thirty airlines offering 124 cities and 38 international destinations. Air Canada, Air Canada Jazz, British Airways, and Lufthansa all serve from PHL.

Rail service to PHL is available via SEPTA's Airport Rail Line. The general transportation system is a network of public transit, taxicab, shuttle, and limousine services.

Photo: Juan Garces

Address: 8000 Essington Avenue, Philadelphia

Phone: +1 215 937 6937

Internet: [www.phl.org](http://www.phl.org)

Email: [contactPHL@phl.org](mailto:contactPHL@phl.org)

### Public Transport



The Southeastern Pennsylvania Transportation Authority (SEPTA) incorporates many forms of transit: bus, subway and elevated rail, light rail, commuter rail and electric trolley bus.

There are a variety of fare options. You can either pay cash for one way or buy a "One-Day Independence Pass" that allows you to travel on any and all SEPTA buses, trolleys, subways and trains. You can get the One-Day Independence Pass from the conductor on any Regional Rail train. Passes are also available at SEPTA Ticket and Sales Offices and online at [shop.septa.org](http://shop.septa.org).

Photo: Pierre-Luc Auclair

Address: 1234 Market Street, Philadelphia

Phone: +1 215 580 7800

Internet: [www.septa.org](http://www.septa.org)

### Post



United States Postal Service post boxes can be found around town. Some Post Office addresses in the city include 615 Chestnut St, 1201 Market St and 925 Dickinson St. The Offices' working hours are normally 9am to 5 or 6pm, but may vary by location.

Photo: Andy Fuchs

Address: 615 Chestnut street, Philadelphia

Phone: +1 215 592 9610

Internet: [www.usps.com](http://www.usps.com)



## Taxi



The following cab companies serve the Philadelphia area:  
Homestead Taxi - +1 215 855

9006

[www.homestead-taxi.com](http://www.homestead-taxi.com)

Freedom Taxi - +1 215 222 9999

[www.freedomtaxi.com](http://www.freedomtaxi.com)

Philadelphia Taxicab Service - +1 215 535 6700

[www.philataxicab.com](http://www.philataxicab.com)

Phone: +1 215 855 9006

Internet: [www.homestead-taxi.com](http://www.homestead-taxi.com)

## Pharmacy



Abundant locations of Walgreen's, CVS, Walmart, Target and various independent chain store retailers.

Walgreen's at 1 Broad St

and 2310 W Oregon Ave are open 24/7, check for the closest pharmacy in the area you're staying in.

Photo: Gemma Garner

Address: 1800 South Street, Philadelphia

Opening hours: Mon-Fri 8am-10pm, Sat 9am-6pm, Sun 10am-6pm

Phone: +1 267 273 7585

Internet: [www.walgreens.com](http://www.walgreens.com)

## Telephone



Country code: +1 Area Codes in Philadelphia: 215 & 267

Photo: Jardson Almeida

## Electricity



110-volt

Photo: Stirling Tschan

### Population

1,553,165

### Currency

\$1 U.S. = 100 cents

### Opening hours

General shop hours are Monday through Saturday, 10am or 11am to 5pm or 6pm.

### Newspapers

The Philadelphia Inquirer  
Philadelphia Daily News  
The Bulletin  
Philadelphia Weekly  
Philadelphia Magazine  
The Daily Pennsylvanian

### Emergency numbers

911

### Tourist information

Independence Visitor Center  
Independence National Historical Park, 1 N Independence Mall W, Philadelphia  
+1 800 537 7676  
Daily 8.30am-6pm