

Port Stephens

in collaboration with Destination NSW for Port Stephens

Photo: Hamilton Lund; Destination NSW

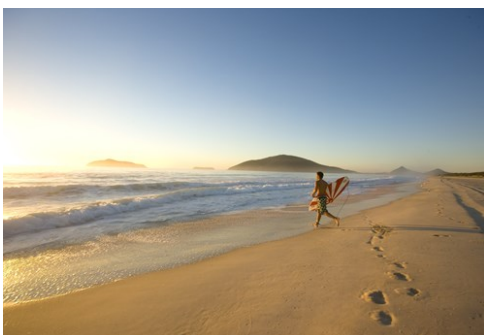


James Pipino; Destination NSW

Blessed with 26 white sandy beaches, a vast blue bay and many tranquil inlets, Port Stephens is an idyllic destination about 2.5 hours' drive north of Sydney. With a marine park rich in diversity, the area is famous for its resident dolphins, crystal clear waters and towering sand dunes. Daily dolphin-watching cruises depart from Nelson Bay and the ocean is great for watching whales during their annual migration. Charming towns are framed by bushland, wetlands and volcanic peaks. Enjoy fresh seafood and local wines in delightful settings.



Hamilton Lund; Destination NSW



James Pipino; Destination NSW

Go where no one has
VENTURED BEFORE!

5 Off the Beaten Track
Destinations in Asia

ArrivalGuides

Foto: WhitefoxChen / Shutterstock

Top 5



Beautiful Beaches

Port Stephens is known for its unspoilt beaches with perfect surf breaks or ...



Swim with Dolphins

Dolphin Swim Australia remains the only permitted wild dolphin swim in NSW, ...



Tomaree National Park - Fi...

Tomaree National Park is a magnificent backdrop to the charming coastal town...



Whale Watching

Port Stephens is a top spot to see humpbacks and southern right whales durin...



Sand Dune Adventures

Ride on quad bikes from the bush to the beach, traversing magnificent sand d...



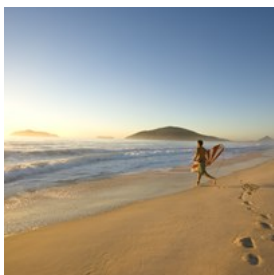
TOP THINGS TO DO



Dan Boud; Destination NSW

Discover wonderful beaches and frolicking dolphins in Port Stephens, where you can enjoy exhilarating water sports such as sailing, kayaking, surfing and snorkelling. Choose from various dolphin-watching cruises departing from Nelson Bay. Other exciting activities include quad-biking and sand-boarding on the towering Stockton sand dunes, and horseriding through the surf at Anna Bay. Explore the many walking trails in magnificent national parks.

Beautiful Beaches



Port Stephens is known for its unspoilt beaches with perfect surf breaks or sheltered bays for swimming, snorkelling and kayaking. Or try parasailing over the bay. Walk along the beach at Shoal Bay to Tomaree Headland for splendid panoramas. At sunset, kayak with dolphins at Nelson Bay and Soldiers Point. Fingal Bay Beach has its own island. Surfers will be thrilled by One Mile Beach, Birubi Beach, Zenith Beach, Box Beach, or Samurai Beach. Families will love One Mile Beach, Boat Harbour and Birubi Beach.

Photo: James Pipino - Destination NSW

Internet: www.visitnsw.com/destinations/north-coast/port-stephens-area/beaches

Swim with Dolphins



Dolphin Swim Australia remains the only permitted wild dolphin swim in NSW, licensed by the Marine Park Authority to operate in the Port Stephens Great Lakes Marine Park. Aboard an ocean-going catamaran, qualified dive masters take you through the most amazing experience of your life, frolicking with short-beaked common dolphins and oceanic bottlenose dolphins.

Photo: Dolphin Swim Australia

Address: Nelson Bay, NSW 2315

Phone: 1300 721 358

Internet: www.visitnsw.com/things-to-do/tours/dolphin-swim-australia#aquatic-marine-viewing-experience

Tomaree National Park - Fingal Bay



Tomaree National Park is a magnificent backdrop to the charming coastal towns of Port Stephens. It's the only place in NSW where you can see outcrops of the acid volcanic rock rhyodacite. The stunning rocky bush coastline is a delight for walkers - take the short Wreck Beach trail through angophora forest - and great for whale watching. Check out the historic gun emplacements of Fort Tomaree. And take your fishing rod - the fish bite well.

Photo: John Spencer

Address: Tomaree National Park, Fingal Bay, NSW 2315

Internet: www.visitnsw.com/destinations/north-coast/port-stephens-area/attractions/tomaree-national-park

Whale Watching



Port Stephens is a top spot to see humpbacks and southern right whales during their annual migration. From mid May to early

September thousands of whales move north to their breeding grounds, and from mid September to mid October they migrate south - you may spot mothers playing with their newborn calves in the calmer waters. Watch them from Tomaree Head Summit - or get up close on a tour from Nelson Bay.

Photo: Stephen Murray of Imagine Cruises

Address: Port Stephens, NSW 2315

Internet: www.visitnsw.com/destinations/north-coast/port-stephens-area/whale-watching

Sand Dune Adventures



Ride on quad bikes from the bush to the beach, traversing magnificent sand dunes and learning about Aboriginal culture in the Worimi

Conservation Lands. On a Sand Dune Adventures tour, riding a 400 cc bike, you'll be in awe of the area's natural beauty. Expert Aboriginal guides will lead you through the Southern Hemisphere's largest moving coastal sand dunes, some rising more than 30 metres. You'll learn about traditional Aboriginal foods and how to find fresh water.

Photo: Sand Dune Adventures

Address: 2163 Nelson Bay Road, Williamtown, NSW 2314

Phone: +61 2 4033 8808

Internet:

www.visitnsw.com/things-to-do/tours/sand-dune-adventures

Murray's Brewery



Murray's Craft Brewing Co. is one of Australia's most beloved craft beer brewers, and shares its home with the region's oldest winery. Recognised

as one of Australia's top brewers, Murray's acclaimed beers feature in critics' lists of the best beers. Visitors to Murray's can taste the beers, as well as local and regional wines; dine at the Brewery Restaurant (food is made with and matched to beer), play bocce and listen to live music in the beautiful eucalypt and vine surrounds.

Photo: Murray's Brewery and Port Stephens Winery

Address: 3443 Nelson Bay Road, Bobs Farm, NSW 2315

Phone: +61 2 4982 6411

Internet: <https://www.visitnsw.com/destinations/north-coast/port-stephens-area/nelson-bay/food-and-drink/murrays-brewery-and-port-stephens-winery>

TOWNS OF PORT STEPHENS



Hamilton Lund; Destination NSW

Dotted along the stunning coast of Port Stephens are charming towns. The bigger towns of Port Stephens are Tea Gardens, Shoal Bay and Nelson Bay. Of the smaller towns, Anna Bay is the gateway to the famous Stockton Beach sand dunes and the oasis of One Mile Beach. Fingal Bay is a fishing destination in the Tomaree National Park. Lemon Tree Passage guards

Tilligerry Creek point and is home to beautiful native flora walks. Salamander Bay is home to Holberts' delicious oysters. Soldiers Point enjoys a state-of-the-art marina and Tanilba Bay is where visitors flock to see koalas in their natural habitat.

Nelson Bay

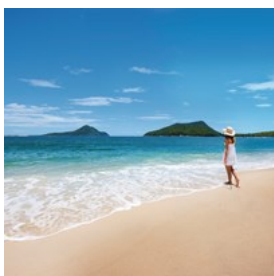


Nelson Bay, on the southern shores of Ports Stephens, is a major holiday playground and the main town in the area. The abundance of nature parks, marine life, brilliant beaches and bays are what make Nelson Bay beautiful. You'll also enjoy the friendly community, buzzing events calendar, gourmet restaurants, beautiful boutiques and art galleries plus award-winning places to stay.

Photo: Ethan Rohloff - Destination NSW

Internet: www.visitnsw.com/destinations/north-coast/port-stephens-area/nelson-bay

Shoal Bay



Gorgeous, tranquil and a great base for sports fishing and scuba diving, Shoal Bay is named after the numerous sand shoals scattered around the peninsula. Close to Nelson Bay, this is a beautifully sheltered waterway. A top drawcard to Shoal Bay is the biggest game fishing competition in the Southern Hemisphere, held each February. The is also excellent for bushwalking and bike riding.

Photo: Jason Busch - Destination NSW

Internet: www.visitnsw.com/destinations/north-coast/port-stephens-area/shoal-bay

Tea Gardens



Tea Gardens is a small town on the Myall River, just a short drive across the "whistling" bridge to neighbouring Hawks Nest. Surrounded by wetlands, the foundation for the town's valuable fishing industry, Tea Gardens is the southern gateway to the Great Lakes, with a reputation for good food and great events, including the Myall River Festival. Along the waterfront is a meandering art walk. There is plenty of good accommodation, outdoor cafés, moored boats to hire and fresh oysters to sample.

Photo: James Pipino - Destination NSW

Internet: www.visitnsw.com/destinations/north-coast/forster-and-taree-area/tea-gardens

DO & SEE



James Pipino; Destination NSW

The natural wonders and idyllic climate of Port Stephens makes it a great destination for outdoor adventures. As well as swimming and surfing, you can try parasailing, jet-skiing, kayaking, sailing, or game fishing. Camp in a national park and go koala spotting, or hike to the peak of a mountain for gorgeous coastal vistas and dolphin and whale watching. Scuba divers can explore the sea caves, sponge gardens and shipwrecks at Fly Point Marine Park. Closer

to shore, crystal clear rock pools teeming with life will enthrall young explorers. You can play an unforgettable round of golf, or pet a friendly shark - Port Stephens is a beach holiday destination with the lot.

Sand Dune Adventures



Sand Dune Adventures (SDA) offers clients an exclusive 'Cultural Quad Bike Riding' experience like no other; traversing the majestic and

traditional landscape of the Worimi Sand Dunes / Port Stephens in NSW, recorded as the largest coastal moving sand mass in the Southern Hemisphere. Customers ride safely from bush to beach on a 400cc quad bike and take in the glorious views of the sweeping coastline (no experience necessary) with experienced Aboriginal guides.

Customers receive hands-on introductions to authentic Aboriginal culture and history, visiting ancient campsites and learning about the local bush foods, medicines and the secrets of finding fresh water. SDA tours cater from beginners to the experience and offer the thrill of riding sand dunes that climb as high as 100 feet.

So if it is adrenalin or just cruising; SDA offers the greatest adventure on one of Australia's greatest kept secrets, the Worimi Sand Dunes!

Photo: Sand Dune Adventures

Address: 2163 Nelson Bay Road Williamtown NSW 2318

Phone: +61 2 4033 8808

Tomaree Head Summit Walk



Take the invigorating short walk to the summit of Tomaree Head, 161 metres above the Port Stephens entrance. As you hike the track, you'll

enjoy unparalleled views of idyllic Port Stephens and its coastline. From the top, you can even see as far as Cabbage Tree and Boondelbah islands - these nature reserves are the world's only nesting sites for the endangered Gould's petrel. When you reach the summit, enjoy panoramic views of Yacaaba Head, Cabbage Tree, Boondelbah and Broughton Islands from the north platform. From the south platform, views of Zenith, Wreck and Box Beaches, Fingal Island and Point Stephens Lighthouse will be sure to impress. Be sure to check out the historic World War II gun emplacements. Take your binoculars as you might be lucky to see some dolphins. There's a picnic table at the lookout, so if you have time, take a picnic lunch or some morning tea to enjoy as you take in the view. On the way back down, don't forget to try Fort Tomaree walk.

Photo: John Spencer OEH

Address: Shoal Bay Road, Shoal Bay, NSW 2315

Irukandji Shark and Ray Encounters - Bobs Farm



Irukandji Shark and Ray Encounters are leaders in marine educations, conservation and fun. This unique experience is unmatched by any other

location in the country. Visitors interact with marine life during a guided shark encounter tour; joining them in their world, petting and feeding them all under the ever-watchful eyes of

the experienced guides.

Irukandji is a massive family, fish and staff alike, as they set out to reveal the true character of some of the worlds most beautiful, intelligent, elusive creatures, at the same time they educate visitors about Australia's delicate ocean ecosystems, ocean pollution and conservation.

Located in the beautiful Port Stephens on the mid north coast: one of the best holiday destinations in Australia.

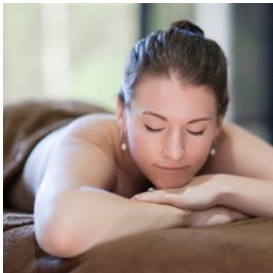
Photo: Irukandji Shark and Ray Encounters

Address: 686 Marsh Road, Bobs Farm, NSW 2316

Phone: +61 2 4982 2476

Internet: www.visitnsw.com/destinations/north-coast/port-stephens-area/nelson-bay/attractions/irukandji-shark-and-ray-encounters

Body & Soul Spa Retreat



Pamper yourself at a day spa in a relaxed and tranquil setting. Body and Soul Spa Retreat at Oaks Pacific Blue Resort, in Salamander Bay, offers

anti-ageing treatments, massage, facials, body rituals, waxing, manicures, pedicures, tinting and more. This award-winning luxurious spa is a perfect escape to revive the body and soothe the spirit.

Photo: Studio 4 Photography - Body and Soul Spa Retreat

Address: The Oaks Pacific Blue Resort, Sandy Point Road, Salamander Bay, NSW 2317

Phone: +61 2 4981 4875

Internet: <https://www.visitnsw.com/destinations/north-coast/port-stephens-area/attractions/body-and-soul-spa-retreat>

Gan Gan Lookout



The highest lookout in Port Stephens offers spectacular views, especially at dusk. On a clear day you can see all the way down the

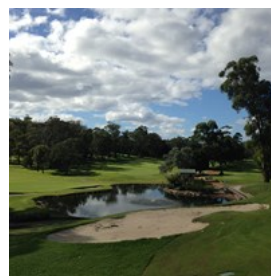
peninsula to the Newcastle docks, and north-west over Hawks Nest to the gigantic headlands of Nelson Head and Nelson Bay. The drive up Lily Hill road to Gan Gan Lookout - through an abundance of Gymea lilies, which grow to five metres - is gorgeous.

Photo: Gan Gan Hill Lookout

Address: Lily Hill Road, Nelson Bay, NSW 2315

Internet: www.visitnsw.com/destinations/north-coast/port-stephens-area/nelson-bay/attractions/gan-gan-hill-lookout

Nelson Bay Golf Club



Nelson Bay Golf Club is located in the bluewater wonderland of Port Stephens approximately 2.5 hours north of Sydney. The 27 hole

championship bush course by the sea is set among a wide range of native trees with an abundance of wildlife including kangaroos, wallabies, koalas and native birds.

They are open to members and visitors, seven days a week, and their staff are dedicated to providing first class service to ensure your day is enjoyable.

After your golf, enjoy the modern clubhouse and bistro, with panoramic views out over the golf course and surrounding mountains.

If you are looking to host an event, their function team are ready to assist you with whatever special occasion you are organising. Whether it be a wedding, engagement, birthday, charity fundraiser, or any other social event.

Photo: Nelson Bay Golf Club

Address: 61 Dowling Street, Nelson Bay, NSW 2315

Phone: +61 2 4981 1132

Internet: <https://www.visitnsw.com/destinations/north-coast/port-stephens-area/nelson-bay/attractions/nelson-bay-golf-club>

Great Lakes Marine Park



The 98,000 hectare Great Lakes Marine Park extends from Stockton Beach to Forster - including Port Stephens, Karuah River, Myall

River, Myall and Smiths Lake - and three nautical miles out to sea. On shore, the bushland has many indigenous cultural and spiritual sites. Offshore, deep submerged cliffs create a water heaven for divers. An official marine conservation area, the park is home to dolphins, turtles, fish, seabirds and seaweeds, along with threatened species such as grey nurse sharks and green turtles.

Photo: Great Lakes Marine Park

Address: Victoria Parade, Nelson Bay, NSW 2315

Phone: +61 2 4984 8270

Internet: www.visitnsw.com/destinations/north-coast/port-stephens-area/nelson-bay/attractions/port-stephens-great-lakes-marine-park

Hunter Botanic Gardens - Heatherbrae



The award-winning Hunter Region Botanic Gardens feature more than 30 hectares of tranquil landscaped gardens displaying the beauty and diversity of Australian native flora.

The gardens also feature a large expanse of natural bushland with several walking tracks. The walks provide an opportunity to see local plants and wildlife including birds, goannas, possums, wallabies and koalas.

Photo: Hunter Region Botanic Gardens

Address: 2100 Pacific Highway, Heatherbrae, NSW 2324

Phone: +61 2 4987 1655

Internet: <https://www.visitnsw.com/destinations/north-coast/port-stephens-area/attractions/hunter-region-botanic-gardens>

Myall Lakes National Park



Myall Lakes is one of the largest coastal lake systems in NSW. The lake and beaches are perfect for water activities including kayaking,

canoeing, boating, fishing, swimming and surfing. Overnight camping sites provide a choice of tent, trailer, caravan, motor home and even boat sites. Don't miss the Grandis Gum - at 76 metres it's one of the tallest trees in the State. Dark Point, a rocky headland north of Hawks Nest, is rich in Aboriginal cultural history.

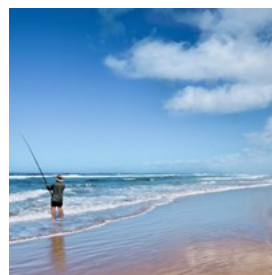
Photo: Myall Lakes National Park

Address: Mungo Brush Road, Mungo Brush, NSW 2423

Phone: +61 2 6591 0300

Internet: <https://www.visitnsw.com/destinations/north-coast/forster-and-taree-area/attractions/myall-lakes-national-park>

Stockton Beach



Stockton Beach stretches 32 km and is a sweeping expanse of sand and sand dunes and Australia's largest moving coastal sand mass. The gigantic

dunes, behind Birubi Beach at Anna Bay, are a magnet for sand boarders, 4WD and quad bike enthusiasts. The beach is also great for swimming and learning to surf. Rich with marine life, fishing and diving is also popular at Stockton. After your adventures, enjoy a picnic and barbecue in the park next to the beach.

Photo: Stockton Beach

Address: Pitt Street, Stockton, NSW 2295

Internet: www.visitnsw.com/destinations/north-coast/newcastle-area/newcastle/attractions/stockton-beach

Tilligerry Habitat Reserve



A favourite feeding and resting spot for local koalas, Tilligerry Habitat Reserve is a nine hectare ecotourism park on Tanilba Bay. Entry is free

with easy walking tracks through the scenic swamp mahogany paperbark forest. You'll see many native birds as well as native orchids and bush tucker plants in season. You might spot koalas, echidnas and bandicoots in the wild. Discover more about the local history, culture and the environment on guided walks.

Photo: Tilligerry Habitat State Reserve

Address: 2E King Albert Avenue, Tanilba Bay, NSW 2310

Phone: +61 2 4984 5677

Internet: <http://www.visitnsw.com/destinations/north-coast/port-stephens-area/attractions/tilligerry-habitat-state-reserve>

CAFÉS, DINING & BARS



Port Stephens is a delicious destination for fresh seafood and seasonal produce. Waters are teeming with fish and there are many regional growers, producers and winemakers, Talented chefs create menus displaying culinary freshness, innovation and expertise. You'll be delighted with freshly caught seafood matched

with local wines and splendid water views. Relax in a beautiful beachside café - fuss free is the motto. Enjoy a meal in a chic bistro, take the family for fish and chips or a hearty pub meal. The region also offers several great wineries and breweries to tour.

Little Beach Boathouse Restaurant and Bar



Little Beach Boathouse Restaurant and Bar brings together the very best of Port Stephens. Amazing water views, a friendly relaxed

atmosphere and some of the most delicious, fresh seafood on the East coast of Australia. The absolute waterfront location offers a fresh, natural, coastal vibe and is the perfect place for a romantic dinner, a special celebration or just a leisurely long lunch.

Of course, the menu has an emphasis on fresh local seafood however they don't forget the meat lovers and vegetarians, and children are always welcome.

Their amazing team pride themselves on quality, welcoming service and when you combine this with beautiful food, great wine and craft beer its easy to see why Little Beach Boathouse is the favourite of visitors and locals alike.

Photo: Hover UAE - Little Beach Boathouse August 2016

Address: 4 Victoria Parade, Nelson Bay NSW 2315

Phone: +61 2 4984 9420

Internet: <https://www.visitnsw.com/destinations/north-coast/port-stephens-area/nelson-bay/food-and-drink/little-beach-boat-house-restaurant-and-bar>

L'il Buddha Asian Cuisine



Chef Alex Chan has over 30 years of experience in creating Chinese and Asian dishes. Expertise and fresh produce are the secret ingredients for his

wide range of Asian cuisine that's full of flavour and colour - you may enjoy sizzling Mongolian lamb or share duck sang choy bow. Sauce recipes handed down from father to son are given a light and healthy touch. Barbecue pork and duck are favourites.

Photo: L'il Buddha Asian Cuisine

Address: 3 Town Centre Circuit, Salamander Bay, NSW 2317

Phone: +61 2 4982 0286

Internet: www.visitnsw.com/destinations/north-coast/port-stephens-area/port-stephens-area-surrounds/restaurants/lil-buddha-asian-cuisine

Long Boat Café



Right on the beautiful sands of Fingal Beach, in the Fingal Bay Surf Life Saving Club, Long Boat Café is the perfect spot after a dip or a surf, for a

hearty meal. Celebrate Australia's surf culture at its best relaxing by the water and indulging in fresh local seafood with a fine selection of ice cold local beers and chilled wines.

Photo: Long Boat Café

Address: Marine Drive, Fingal Bay, NSW 2315

Phone: +61 2 4981 5958

Internet: www.visitnsw.com/destinations/north-coast/port-stephens-area/port-stephens-area-surrounds/restaurants/longboat-cafe

Mavericks on the Bay



On the edge of the picturesque marina, Mavericks is great place for sunset drinks and delicious food. The modern Australian menu

is made up of light snacks and more substantial mains, plus charcuterie and cheese boards and seafood platters to share with friends over a glass of Australian wine. On Fridays and weekends, Mavericks is a lively entertainment spot, with local musicians performing for diners.

Photo: Mavericks on the Bay

Address: d'Albora Marina, 8 Teramby Road, Nelson Bay, NSW 2315

Phone: +61 2 4984 5958

Internet: www.visitnsw.com/destinations/north-coast/port-stephens-area/nelson-bay/restaurants/mavericks-on-the-bay

Moonshadow Cruises Twilight Dinner Cruise



The Twilight Dinner Cruise is the perfect dining experience for all occasions. Enjoy appetisers on arrival, followed by a modern

Australian buffet featuring a large variety of seafood, meats and vegetarian options. View breathtaking sunsets and moonrises from the top deck, and keep an eye out for the dolphins who love to ride the bow waves. There are two fully licensed bars, and fabulous entertainment so you can dance the night away.

Photo: Moonshadow Cruises

Address: Shop 3, 35 Stockton Street, Nelson Bay, NSW 2315

Phone: +61 2 4984 9388

Internet: www.visitnsw.com/destinations/north-coast/port-stephens-area/nelson-bay/restaurants/moonshadow-cruises

Rock Lobster Restaurant



Enjoy fresh local seafood and brilliant water views at Rock Lobster Restaurant in Nelson Bay. The specialty is fresh local lobsters and seafood platters. For that special occasion, ask about the restaurant's personalised cakes.

Photo: Rock Lobster Restaurant

Address: 6 Teramby Road, Nelson Bay, NSW 2315

Phone: +61 2 4981 1813

Internet: www.visitnsw.com/destinations/north-coast/port-stephens-area/nelson-bay/restaurants/rock-lobster-restaurant

The Deck



Great for a family outing, The Deck at Soldiers Point Marina comfortably sits 100 for casual dining by the water overlooking the boats. The Greek

family who own and run The Deck create a warm atmosphere. Enjoy a delicious Mediterranean breakfast, lunch or dinner. A fine selection of snacks, salads, pasta, risotto and substantial mains as well as amazing desserts are on the menu.

Photo: The Deck

Address: Soldiers Point Marina, Sunset Bvd, Soldiers Point, NSW 2317

Phone: +61 2 4919 1502.

Internet: www.visitnsw.com/destinations/north-coast/port-stephens-area/port-stephens-area-surrounds/restaurants/the-deck-cafe-restaurant-and-bar

The Eatery @ Pacific Dunes



Enjoy sweeping views across the water, Pacific Dunes golf course and the surrounding bushland at The Eatery @ Pacific Dunes. With a casual alfresco dining area and a garden terrace, it's the perfect location to meet with family, friends and colleagues for breakfast, lunch or dinner. Bring the kids for free babykins, toys to play with and colouring in activities.

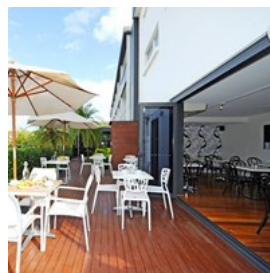
Photo: The Eatery @ Pacific Dunes

Address: Championship Drive, Medowie, NSW 2318

Phone: +61 2 4916 0500

Internet: www.visitnsw.com/destinations/north-coast/port-stephens-area/port-stephens-area-surrounds/restaurants/the-eatery-at-pacific-dunes

The Little Nel Café



This charming, sun-drenched café is part of the stylish Nelson Resort. Head here for organic Suspension Espresso coffees and a yummy breakfast or lunch. With the gorgeous lookout over beautiful gardens to the town, Little Nel is the perfect brunch spot. Try the ploughman's platter with leg ham, Harrigan's Irish Cheddar, Hunter Gold Washed Rind, hard boiled egg and Hank's onion marmalade.

Photo: The Little Nel Café

Address: 1 Government Road, Nelson Bay, NSW 2315

Phone: +61 2 4916 4600

Internet: www.visitnsw.com/destinations/north-coast/port-stephens-area/nelson-bay/restaurants/the-little-nel-cafe-at-nelson-bay-resort

The Point



Location and ambience complement a great dining experience at this stunning waterfront spot in the Soldiers Point Marina overlooking

untouched hinterland. The succulent seafood menu justifies the many awards The Point has earned, including Best Seafood Restaurant in the region. Enjoy a cocktail or excellent glass of wine and take in the breathtaking sunsets.

Photo: The Point

Address: Sunset Boulevard, Soldiers Point, NSW 2317

Phone: +61 2 4984 7111

Internet: www.visitnsw.com/destinations/north-coast/port-stephens-area/port-stephens-area-surrounds/restaurants/the-point-restaurant

Wonganella Estate Café Restaurant



A short drive from Nelson Bay is a top winery, Wonganella Estate. The estate's café and restaurant sits atop a hill with superb views of the

hinterland through to Port Stephens. Each dish on the Modern Australian menu is matched with a Wonganella Estate wine. On Saturday night, the kitchen offers a delicious three-course menu inspired by a different European destination each week.

Photo: Wonganella Estate Café Restaurant

Address: 3439 Nelson Bay Road, Bobs Farm, NSW 2316

Phone: +61 2 4982 6121

Internet: www.visitnsw.com/destinations/north-coast/port-stephens-area/port-stephens-area-surrounds/restaurants/wonganella-estate-cafe-restaurant

EVENTS



Port Stephens hosts spectacular music and cultural festivals, thrilling sporting events and exciting family entertainment. The region is brimming with creativity, from celebrating delicious local produce and wines to displaying arts and crafts at regular community markets.

Tastes at the Bay Festival



Now in their fifteenth year, the 2018 Tastes at the Bay Festival, is set to be a feast of the best Food, Wine and Music in the Port Stephens

Region! From Seafood to Shiraz, Chocolate to Champagne or Fresh Bread to Craft Beers, the Tastes at the Bay Festival has something for every palette. The event provides an opportunity for local producers to showcase their products to the local community and visitors.

Their event this year is guaranteed to be bigger and better than ever with a range of activities, cooking demonstrations, the free Festival weekend, plus ticketed events for the connoisseur to enjoy. They will also be introducing new local producers, winemakers and musicians to entertain your tastebuds and get your toes tapping!

Their popular (and sell-out!) Moonshadow Jazz Luncheon Cruise is back, as well as the Friday night Winemakers Dinner and the Tasters Trail,

to experience a range of top nosh. And, this year they also introduce the Munch and Move event, taking you on a tour around the region.

They haven't forgotten about the little ones - expect fun-filled kids activities in their Little Tastes section.

Photo: Henke Tobbe

Address: Nelson Bay CBD, Magnus Street, Nelson Bay NSW 2315

Phone: +61 2 4984 4751

Internet: <https://www.visitnsw.com/destinations/north-coast/port-stephens-area/nelson-bay/events/tastes-the-bay-festival>

Elvis An American Trilogy: Nelson Bay



Elvis An American Trilogy covers the three generations of Elvis with sincerity and sophistication. The show begins with Vic Trevino

Junior who embodies the Rockabilly sound and raw dance moves of the young and dynamic Elvis. Gino Monopoli then recreates the movie years, with the costumes, songs and Hollywood influence that brought Elvis to the big screen. Greg Miller channels Elvis in the famous White Eagle jumpsuit, meticulously recreating the sound and the nuances that made Elvis the most recognisable figure in history. With their full live band and choir, Vic, Gino and Greg recreate the Elvis experience like you've never seen before. Back by popular demand, August 2018 marks the return of Elvis An American Trilogy, the third return in two years for three of the world's leading Elvis tribute artists.

Photo: Eventfinda

Address: Nelson Bay Diggers, 52 Shoal Bay Road, Nelson Bay NSW 2315

Internet: <https://www.visitnsw.com/destinations/north-coast/port-stephens-area/nelson-bay/events/elvis-american-trilogy-nelson-bay>

Tastes at the Bay: Jazz Food Wine edit



A festival of flavours and quavers! This November "Tastes at the Bay" invites you to savour the flavours and the quavers with three days of fun,

food, wine and jazz in the Nelson Bay CBD. Get your feet tapping and your taste buds dancing at this popular annual bayside bash!

Choose from a range of events other the three days to suit the whole family: from Tattinger Champagne with Oysters and the Winemaker's Dinner at the Nelson Bay Golf Club, to a Jazz Luncheon Cruise!

Its free entry so get your groove on with some hot jazz from The Fruit Trees, New Orleans Quartet, and Dr Don's Doubledose. Enjoy food stalls, music from Local and Hunter Valley wines, face painting, craft beer from Murrays Brewery, fresh local seafood, street entertainment and more "yum yum, sip sip, shooby-do-wops" than you can poke a stick at!

Photo: DPS

Address: Various venues Various locations Port Stephens, Nelson Bay, NSW 2315

Phone: +61 2 4984 4751

Internet: <https://www.visitnsw.com/destinations/north-coast/port-stephens-area/nelson-bay/events/tastes-the-bay-jazz-food-wine>

Step Back into King Street Heritage Festival



Step back in time and embrace the past. King Street, the original main street of Raymond Terrace in its heyday as a river port. is closed to

traffic for the day so you can enjoy old fashioned activities, listen to acoustic music, marching bands, Morris Dancers, Irish dancers. Take part

in simple old fashioned games for all ages. Dress up vintage and join the Best Hat or Bonnet parade, or enter the Market Place Majestic Beard competition. Also a Market Place Best Dressed Vintage Child.

Local history groups will display information about the early days in the Lower Hunter and a display about serving in WW I. Relax and slow down to a simpler pace of life and try out knucklebones, quoits, writing with quills, bamboo pole fishing all for free. Food and stalls selling traditional wares are available.

Photo: Corinne Paterson - Port Stephens Council
Address: On the street 18 King Street, Raymond Terrace, NSW 2324
Phone: +61 2 4987 7576
Internet: <https://www.visitnsw.com/destinations/north-coast/port-stephens-area/nelson-bay/events>

Blue Water Country Music Festival



This festival was introduced to the Australian Country Music calendar with the idea of bringing the country to the coast. Enjoy free entertainment in Port Stephens with great named acts and some of Australian Country Music's rising stars. Over three days, the fantastic community atmosphere is charged by music, arts, markets and entertainment, all in the beautiful surrounds. Don't miss Gum Boot Throwing on the beach or Boot Scooting in the streets.

Photo: Blue Water Country Music Festival
Address: Various venues in Port Stephens, NSW 2315
Phone: +61 2 4984 4751
Internet: <https://www.visitnsw.com/destinations/north-coast/port-stephens-area/events/blue-water-country-and-blues-music-festival>

Clans of the Coast



In September, the communities of Port Stephens are united by a weekend festival of events and entertainment guaranteed to awaken the Celt in anyone. A real Highland fling, pipe bands, Scottish dancing, singing groups, fiddlers, a strong man competition and even a medieval fight re-enactment create an atmosphere of frivolity. Browse among Celtic-inspired jewellery and clothing stalls, and visit clan tents and savour local foods, wines and ales.

Photo: Clans on the Coast
Address: Tomaree Sports Complex No.1 Oval, Nelson Bay Rd, Nelson Bay, NSW 2315
Internet: <https://www.visitnsw.com/destinations/north-coast/port-stephens-area/nelson-bay/events/clans-the-coast>
Email: admin@clansonthecoast.com

Club Marine Trailer Boat Fishing Tournament



From relatively small beginnings in 1994, this competition for enthusiastic anglers has become one of the most popular in the country. This tournament is held just outside the Easter school holidays. A lot of fun for all the family, it draws some 1,000 entrants and 450 boats. Regarded as easy to enter, but very hard to win, it attracts the best linesmen to the ferry terminal in Nelson Bay. But for half of the contestants, this is their first ever fishing tournament.

Photo: Club Marine Trailer Boat Fishing Tournament
Address: Cruise Terminal Park, Nelson Bay, NSW 2315
Phone: +61 2 9029 6554
Internet: <https://www.visitnsw.com/destinations/north-coast/port-stephens-area/nelson-bay/events/club-marine-trailer-boat-fishing-tournament>

Myall River Festival



This October event offers spring market stalls, stage entertainment, river activities, games and competitions for all.

The family friendly Myall River Festival kicks off with a floating lantern display and fireworks on the river. You'll also enjoy live music, duck racing, boating, dancing, a pet parade and a chance to watch artists at work in Galleries in the Gardens.

Photo: Myall River Festival

Address: Marine Drive, Tea Gardens, NSW 2324

Phone: +61 6554 8789

Internet: www.visitnsw.com/events/myall-river-festival

Sail Port Stephens



If one event captures the spirit of Port Stephens - this is it. Each April, one of the fastest growing regattas in Australia sets sail from the glistening

waterways of the marine park and out to sea, around the islands and back. This gorgeous race course is set to become internationally recognised. But it's not all about sailing and spinnakers - the event is a load of fun with family entertainment to be found both on and off the water. Keep an eye out for the Regatta Markets.

Photo: Sail Port Stephens

Address: d'Albora Marina, Teramby Road, Nelson Bay, NSW 2315

Phone: +61 422 844 198

Internet: www.visitnsw.com/events/sail-port-stephens

Tomaree Markets



Tomaree Markets are charming country community markets with live music and an enjoyable atmosphere.

Stalls sell craft, artisan food products and designer items, from jewellery to local art works to olive oils - Tomaree Markets will surprise you. Held on the second and fourth Sunday of the month - go along and enjoy the fun.

Photo: Tomaree Markets

Address: Tomaree Sports Complex, Nelson Bay Road, Nelson Bay, NSW 2315

Phone: +61 2 4982 5852

Internet: www.visitnsw.com/events/tomaree-markets

SHOPPING



A natural paradise, Ports Stephens is blessed with a glorious bounty of delicacies and treats. Pick yourself up some fresh rock oysters, avocados, macadamias, figs, olives, or seafood for the barbecue. Along with freshly caught and harvested seafood and seasonal fresh produce, the area offers gorgeous local arts and boutiques.

Holberts Oyster Supplies



It's hard to resist the fresh and high quality oysters that come out of Port Stephens. Oysters from this region are sold worldwide - and Holberts

are some of the best. For five generations this family owned business has been growing and distributing award-winning oysters. Holberts is now one of the biggest operations in NSW. Watch the oysters being shucked daily. A must - whether dining in or out.

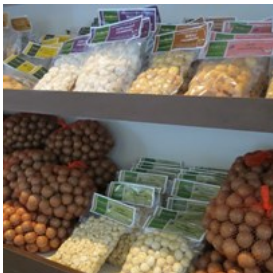
Photo: Holberts Oyster Farm

Address: Lot 52, Diemars Road, Salamander Bay, NSW 2317

Phone: +61 2 4982 7234

Internet: www.visitnsw.com/destinations/north-coast/port-stephens-area/food-and-drink/holberts-oyster-farm

Medowie Macadamias



The Medowie plantation, established in 1980, grows five varieties of macadamia trees over five hectares. The plantation is family

owned and run, from planting to harvesting to experimenting in the kitchen with new and tasty treats for visitors to take away. Try the chilli-flavoured nuts and macadamia brittle, plus macadamia ice cream as well as oils, beauty products and other great gifts.

Photo: Medowie Macadamia Farm

Address: 672 Medowie Road, Medowie, NSW 2318

Phone: +61 2 4982 2888

Internet: <https://www.visitnsw.com/destinations/north-coast/port-stephens-area/food-and-drink/medowie-macadamias>

Nelson Bay Fishermen's Wharf Seafoods



An institution in Nelson Bay, the wharf is famous for its prize-winning fish and chips plus a range of the freshest prawns, snapper, flathead,

jewfish, cod, salmon, tuna and ocean trout unloaded daily from the fishing trawlers. Choose your fresh fish and watch it being filleted. Or select from the lobster tanks for live shellfish that's cooked on the spot. Meeting the staff and hearing the local stories make heading down to Fishermen's Wharf Seafoods well worth it.

Photo: Nelson Bay Fishermans Wharf Seafood

Address: 1 Teramby Road, Nelson Bay, NSW 2315

Phone: +61 2 4984 3330

Internet: www.visitnsw.com/destinations/north-coast/port-stephens-area/nelson-bay/food-and-drink/nelson-bay-fishermens-wharf-seafoods

Port Stephens Market



This delightful monthly market is where you'll find the wonderful things the community produces. A range of stalls flourish

with flowers, plants, paintings, clothing for all ages, baby goods and even animal treats. Kids entertainment includes face painting and a jumping castle. Goodies include a sausage sizzle, homemade cakes, Devonshire Teas and coffee. The market is held on the fourth Saturday of the month, except in December.

Photo: Dan Chojnacki - Entice Images

Address: Port Stephens Church of Christ, Nelson Bay Road, Salt Ash, NSW 2318

Phone: +61 434 359 816

Internet: <https://www.visitnsw.com/destinations/north-coast/port-stephens-area/events/port-stephens-market>

Port Stephens Community Arts Centre



The Community Arts Centre at Port Stephens is a hidden gem where you'll discover the skills of the region's artisans and take home some

beautiful gifts and mementos. The centre houses a number of galleries displaying large collections of arts and crafts - all for sale at reasonable prices. The Arts Centre have a delightful weekend café for light lunches and drinks.

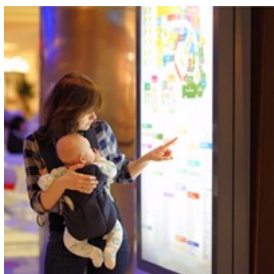
Photo: Port Stephens Community Arts Centre

Address: Cultural Place, off Shoal Bay Rd, Nelson Bay, NSW 2315

Phone: +61 2 4981 3604

Internet: www.visitnsw.com/destinations/north-coast/port-stephens-area/nelson-bay/attractions/port-stephens-community-arts-centre

Salamander Bay Shopping Centre



With fashion, food and services, you're sure to find what you need. The shopping centre offers over 80 retailers plus the added convenience of

Coles, Kmart, Target Country, Woolworths, Aldi, a food court, and parking for over 1,000 cars.

The range of specialty stores includes women's and men's fashion, jewellery, homewares, coffee shops, a newsagent and post office, and more.

Photo: Salamander Bay Shopping Centre

Address: 2 Town Centre Circuit, Salamander Bay, NSW 2317

Phone: +61 2 4982 0066

Internet: www.visitnsw.com/destinations/north-coast/port-stephens-area/attractions/salamander-shopping-centre

Tailor Made Fish Farm



Tailor Made Fish Farms is a unique aquaculture and hydroponics operation providing live barramundi to restaurants. Using

award-winning and internationally recognised recirculation technology, Tailor Made Fish Farms can offer visitors a combined package of Production Tours that run daily at 11am and 2pm, with a delicious dining experience at the Cookabarra Restaurant and Function Centre.

Photo: Cookabarra Restaurant and Function Centre

Address: 476C Marsh Road, Bobs Farm, NSW 2316

Phone: +61 2 4982 6740

Internet: www.visitnsw.com/destinations/north-coast/port-stephens-area/nelson-bay/food-and-drink/tailor-made-fish-farms

ACCOMMODATION



Port Stephens is a popular holiday destination and offers a range of accommodation to suit your budget, from camping areas to luxury resorts. You can choose from a traditional camping holiday by the bush and the beach, to glamping, sophisticated townhouses, a renovated lighthouse, holiday houses and luxury hotels.

Albacore



A perfect penthouse apartment with three bedrooms, two bathrooms, a spacious living area with floor to ceiling windows that capture the amazing water views and open to a covered balcony. Outside Albacore's swimming pool, sauna and roof-top barbecue complement the pleasure of being at beautiful Shoal Bay.

Photo: Albacore 1 Nelson Bay

Address: 1/12 Ondine Close, Nelson Bay, NSW 2315

Phone: +61 2 4984 0100

Internet: www.visitnsw.com/destinations/north-coast/port-stephens-area/nelson-bay/accommodation/albacore-1-nelson-bay

Amarna Resort



Enjoy snorkelling, fishing, hiking, biking or simply soaking up the sun by the pool with a secluded beach beyond? Amarna is the only luxury boutique resort overlooking Dutchmans Bay. With eleven exclusive suites, Amarna offers cool sea breezes, spectacular sunsets and a white sandy beach on the doorstep, plus a heated 25-metre lap pool with spa.

Photo: Amarna Resort

Address: 16 Christmas Bush Avenue, Nelson Bay, NSW 2315

Phone: +61 2 4981 1644

Internet: www.visitnsw.com/destinations/north-coast/port-stephens-area/nelson-bay/accommodation/amarna-resort

Anchorage Port Stephens



The Anchorage is luxury boutique resort. This seaside escape with its nautical overtones is the ideal intimate hideaway. With the marina on one side and rugged bushland on the other, this tranquil spot ensures a peaceful break - whether you play a few rounds of golf or a game of tennis or relax with a book by the pool.

Photo: Anchorage Port Stephens

Address: Corlette Point Road, Corlette, NSW 2301

Phone: +61 2 4984 2555

Internet: www.visitnsw.com/destinations/north-coast/port-stephens-area/accommodation/anchorage-port-stephens

Cote d'Azure



All anyone could want in a resort - a heated pool, gym, sauna and beautiful gardens make Cote d'Azure an award winner. Choose from 54 modern apartments with the latest fit-outs, plus three penthouse complexes overlooking Nelson Bay. From the top floor view Hawks Nest and even get a glimpse of Broughton Island. On-site managers will take care of all your needs and wants.

Photo: Cote d'Azure

Address: 61 Donald Street, Nelson Bay, NSW 2315

Phone: +61 2 4984 9595

Internet: www.visitnsw.com/destinations/north-coast/port-stephens-area/nelson-bay/accommodation/cote-d-azur

Fingal Bay Holiday Park



Stay in self-contained luxury at a Beach House or camp out in the park and cook up delicious meals in the camp kitchen. This is an

award-winning holiday location for families, or a group of friends who want a casual vacation. Fingal Bay Holiday Park provides beach and bushwalking on the doorstep, and is only five minutes from the heart of Nelson Bay and a pebble's throw from Shoal Bay.

Photo: Fingal Bay Holiday Park

Address: 52 Marine Drive, Fingal Bay, NSW 2315

Phone: +61 2 4981 1473

Internet: <https://www.visitnsw.com/destinations/north-coast/port-stephens-area/accommodation/fingal-bay-holiday-park>

Halifax Holiday Park



A multiple award-winning holiday park in the bush at the calm Shoal Bay and Little Beach. Halifax is a favourite for boating enthusiasts with a marina

and deep water ramp nearby. The park offers a great mix of luxurious villas and budget-friendly accommodation options.

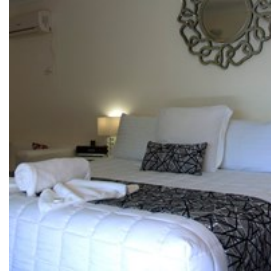
Photo: Halifax Holiday Park

Address: Beach Road, Little Beach, Nelson Bay, NSW 2315

Phone: +61 2 4981 1522

Internet: www.visitnsw.com/destinations/north-coast/port-stephens-area/nelson-bay/accommodation/halifax-holiday-park

Karuah Motor Inn



Within easy reach of shops, restaurants and all the essentials, this motor inn is set in a beautiful garden in the heart of Karuah. Quiet and

peaceful, it's also only 200 metres from the river - and you can rent a fishing rod. Golf, tennis, bowls and basketball complete the sporting picture of this fun holiday spot.

Photo: Karuah Motor Inn

Address: 422 Tarean Road, Karuah, NSW 2324

Phone: +61 2 4997 5336

Internet: www.visitnsw.com/destinations/north-coast/port-stephens-area/accommodation/karuah-motor-inn

Mantra Aqua Resort



Mantra Aqua Resort offers contemporary, spacious, open plan apartments (two and three bedrooms). Large

living areas flow out to balconies overlooking a glorious lagoon pool and landscaped gardens. Close to the marina and the bay, shopping and restaurants are within easy access along with a selection of sparkling beaches.

Photo: Mantra Aqua Resort

Address: 1A Tomaree Street, Nelson Bay, NSW 2315

Phone: +61 2 4916 4777

Internet: www.visitnsw.com/destinations/north-coast/port-stephens-area/nelson-bay/accommodation/mantra-aqua-resort

Marty's At Little Beach



Top of the list in many guides, the service at this beautiful boutique accommodation is impeccable. Modern and spacious self-contained

apartments and motel-style rooms nestle between two of Port Stephens best beaches - Shoal Bay with its superb sunrises and Little Beach with its sublime sunsets. All within two minutes walk of the soft sands, this gorgeous spot enjoys rave reviews.

Photo: Martys at Little Beach

Address: Corner Gowrie Ave & Intrepid Close, Nelson Bay, NSW 2315

Phone: +61 2 4984 9100

Internet: www.visitnsw.com/destinations/north-coast/port-stephens-area/nelson-bay/accommodation/martys-at-little-beach

Melaleuca



This is a backpacker's Eden - with boutique cabins, dormitory rooms, camping or Kombi van sites. Melaleuca is architecturally designed

using wood and glass to maximise light, space and harmony with nature. The main building has double kitchens with lounge area and Wi-Fi, a laundry and decks outside for sitting under the stars. This getaway in the trees is guaranteed to restore harmony to the soul.

Photo: Melaleuca Backpackers - Anton

Address: 2 Koala Place, One Mile Beach, Boat Harbour, NSW 2316

Phone: +61 2 4981 9422

Internet: <https://www.visitnsw.com/destinations/north-coast/port-stephens-area/accommodation/melaleuca-surfside-backpackers>

Nelson Bay Bed And Breakfast



More like a boutique hotel than a B&B, this architect-designed sanctuary has the privacy of separate accommodation and the

convivial atmosphere provided by the host, who takes care of every little thing. And it's just minutes away from restaurants, the marina and all boating activities, and beaches - within the peace of a bushland environment.

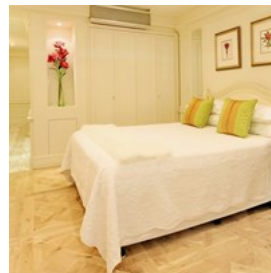
Photo: Nelson Bay Bed And Breakfast

Address: 81 Stockton Street, Nelson Bay, NSW 2315

Phone: +61 2 4984 3655

Internet: www.visitnsw.com/destinations/north-coast/port-stephens-area/nelson-bay/accommodation/nelson-bay-bed-and-breakfast

Pacific Blue Apartment 288



Step into absolute luxury in this first floor apartment overlooking the lagoon pool that wraps around the resort. It's perfect for couples,

honeymooners and those looking for an indulgent weekend away, short break or holiday. Beautifully appointed and with access to all the resort facilities (pools, tennis court, gym, sauna, day spa, restaurant and bar).

Photo: Pacific Blue Apartment 288A

Address: 265 Sandy Point Road, Salamander Bay, NSW 2317

Phone: +612 4981 1577

Internet: <https://www.visitnsw.com/destinations/north-coast/port-stephens-area/accommodation/pacific-blue-apartment-288a>

Shoal Bay Holiday Park



This award-winning camp site is directly opposite what is regarded as one of the most beautiful beaches on the East Coast of Australia -

stunning Shoal Bay. Chrystal clear waters and fine white sand provide a flawless swimming spot. And a minute's walk will take you to cafés, boutiques, restaurants and bars.

Photo: Shoal Bay Holiday Park

Address: Shoal Bay Road, Shoal Bay, NSW 2315

Phone: +61 2 4981 1427

Internet: www.visitnsw.com/destinations/north-coast/port-stephens-area/shoal-bay/accommodation/shoal-bay-holiday-park-port-stephens

Sugarloaf Point Lighthouse



Nestled underneath the historic Sugarloaf Point Lighthouse, the three lighthouse keepers' cottages offer restored, beautifully appointed, old

world charm with modern conveniences. The cottages are located above the sleepy fishing village of Seal Rocks, within Myall Lakes National Park. All cottages offer interrupted ocean views, are self-contained and fully equipped for self catering. Each cottage has up to two or three bedrooms and generously accommodates up to six or eight guests.

Photo: Sugarloaf Point Lighthouse Accommodation

Address: 1 Kinka Rd, Seal Rocks, NSW 2423

Phone: +61 2 4997 6590

Internet: <https://www.visitnsw.com/destinations/north-coast/forster-and-taree-area/accommodation/sugarloaf-point-lighthouse-accommodation>

The Nelson Resort



This stylish and contemporary boutique hotel offers easy walking to the marina with its boats, bars and restaurants. Closer to

home, there are great facilities for tennis and swimming or work out in the gym and then relax in the sauna. Rooms come complete with absolute comfort and balconies from which to enjoy the sparkling bay views.

Photo: The Nelson Resort

Address: 3 - 7 Government Road, Nelson Bay, NSW 2315

Phone: +61 2 4916 4600

Internet: www.visitnsw.com/destinations/north-coast/port-stephens-area/nelson-bay/accommodation/the-nelson-resort

ESSENTIAL INFORMATION



Hamilton Lund; Destination NSW

Port Stephens is easy to get to from any of Australia's major cities, and has excellent infrastructure and facilities to support a memorable holiday on the coast.

Newcastle Airport

From Newcastle Airport, in Williamtown, it's a half-hour drive to most of the beautiful beaches in the Port Stephens area. Airlines Qantas, Jetstar, Virgin Australia, Regional Express (REX) and FlyPelican service the airport, allowing easy access on a daily basis.

Port Stephens Coaches operate a public bus service from Newcastle Airport to Newcastle train station up to 11 times per day, as well as a service to the Nelson Bay area. For further information and timetables, phone: +61 2 4982 2940 or visit www.pascoaches.com.au.

Address: 1 Williamtown Drive, Williamtown, NSW 2318

Phone: +61 2 4928 9800

Internet: www.newcastleairport.com.au

Trains

CountryLink provides rail services in and out of Newcastle from many regions within New South Wales. The trip is leisurely, picturesque and great value - well worth the time. There are regular train services from Sydney to Newcastle.

Internet: www.nswtrainlink.info or www.transportnsw.info

Driving to Port Stephens

Port Stephens is on the New South Wales coast 200 km north of Sydney. It's an easy route to drive, which takes about 2.5 hours along the M1 highway. At the end of the M1, turn right at the roundabout and follow the sign "Hexham and Pacific Highway". Veer to the right and merge with the New England Highway then merge to the left at the sign "Taree and Pacific Highway" which takes you over the Hexham Bridge. Turn right onto Tomago Road, and turn left into Nelson Bay Road at the roundabout. Then follow the signs to your Port Stephens destination.

Hire Cars

All major rental car companies are based at Newcastle Airport.

Thrifty Car Hire - www.thrifty.com.au

Budget Car Hire - www.budget.com.au

Europcar - www.europcar.com.au

Avis - www.avis.com.au

Hertz - www.hertz.com.au

Nelson Bay Hire Cars and Limousines:

Phone: 02 4984 7766

Pharmacies

CHEMMART PHARMACY

- 18 Stockton St., Nelson Bay, NSW 2315
- Phone: +61 2 4984 2445

ANNA BAY PHARMACY

- 129 Gan Gan Rd., Anna Bay, NSW 2316
- Phone: +61 2 4982 2490

LAKESIDE PHARMACY

- Shop 13, 80 Benjamin Lee Drive, Raymond Terrace, NSW 2324
- Phone: +61 2 4987 5005

MEDOWIE PHARMACY

- Shop 17, Medowie Shopping Village, Medowie, NSW 2318
- Phone: +61 2 4982 8564

NELSON BAY PHARMACY

- 71 Magnus St, Nelson Bay, NSW 2315
- Phone: +61 2 4981 1237

PRICELINE PHARMACY

- Terrace Central Shopping Centre, Raymond Terrace, NSW 2324
- Phone: +61 2 4987 3466

SALAMANDER BAY AMCAL CHEMIST

- Shop 12, Salamander Bay Shopping Centre, Salamander Bay, NSW 2317
- Phone: +61 2 4982 7644

SHOAL BAY PHARMACY

- 59 Shoal Bay Rd., Shoal Bay, NSW 2315
- Phone: +61 2 4981 1247

WANDA BEACH PHARMACY

- Shop 2, 261 Soldiers Point Rd., Salamander Bay, NSW 2317
- Phone: +61 2 4984 7936

Taxis

Taxis are available from Newcastle airport to Port Stephens, and within the region on call.

NELSON BAY TAXIS

132 George Rd, Salamander Bay, Port Stephens, NSW 2317
Ph: +61 2 4984 6699

NEWCASTLE TAXIS

3/7 Chaucer St., Hamilton, Newcastle, NSW 2300
Phone: +61 13 33 00
www.newcastletaxis.com.au

Telephone

Country code: (+61)
Area Code: (02)

Electricity

220-240V

Population

65,000 approx

Currency

1 Australian Dollar = 100 cents

Opening hours

Usually 9am – 5pm Monday to Saturday
Weekend hours can be restricted.

Internet

www.visitnsw.com/destinations/north-coast/port-stephens-area/

Newspapers

Newcastle Herald
The Port Stephens Examiner
The Sydney Morning Herald (NSW)
The Daily Telegraph (NSW)
The Australian (national)

Emergency numbers

Police, Fire, Ambulance 000

Tourist information

Port Stephens Visitor Information Office,
60 Victoria Parade, Nelson Bay, NSW 2315
Open 7 days a week from 9am – 5p.m.
Phone: +61 2 4980 6900 or 1800 808 900
info@portstephens.org.au
www.portstephens.org.au