



Snowy Mountains

in collaboration with Destination NSW for the Snowy Mountains

Photo: Perisher



Murray Vanderveer; Destination NSW

Australia's highest peaks are in the Snowy Mountains, where there's thrilling downhill skiing and snowboarding during the snow season. Lively towns and resorts in this alpine region in southwest NSW are also popular destinations in warmer months for hiking, horseriding, kayaking, mountain biking and fishing. When spring melts the snow into cascading waters and wildflowers bloom, streams shelter trout and attract many fly fishermen. Vineyards in this beautiful region produce excellent cool-climate wines, and fresh produce is on sale at farm gates.



Murray Vanderveer; Destination NSW



Perisher

Go where no one has
VENTURED BEFORE!

5 Off the Beaten Track
Destinations in Asia

ArrivalGuides

Foto: WhitefoxChen / Shutterstock

Top 5



Mount Kosciuszko

Australia's highest peak is Mount Kosciuszko. Standing at 2,228 metres above...



Kosciuszko National Park

With almost 700,000 hectares of outstanding beauty, this spectacular nationa...



Snowy Mountains Snow Resorts

Whether you're a family of beginners, expert skiers and



Fishing

This is the premier trout fishing region in New South Wales and it takes ove...



Bombala Platypus Reserve

Visit the Bombala Platypus Reserve to see one of Australia's most endearing ...



TOP 8



Mike Gebicki

The Snowy Mountains provide the ultimate outdoor escape - a true lure for nature lovers year-round.

Mount Kosciuszko



Australia's highest peak is Mount Kosciuszko. Standing at 2,228 metres above sea level, it presents a stunning perspective from its majestic peak. A chairlift will take you to the highest access point to the mountain throughout the year. In the warmer months a walking trail to the peak is open. From the chairlift, it's an easy 6 km walk to the top for breathtaking views.

Photo: Sally Mayman - Turtle Pictures

Internet: www.visitnsw.com/destinations/snowy-mountains/kosciuszko-national-park/kosciuszko

Kosciuszko National Park



With almost 700,000 hectares of outstanding beauty, this spectacular national park contains Australia's five highest alps, glacial lakes, limestone caves, grasslands and woodlands. The park is recognised as a UNESCO Biosphere

Reserve and contains plants not found anywhere else on the Earth. The winter skiing is some of the country's best, and you can explore this vast wonderland year-round.

Photo: Mike Gebicki

Internet: www.visitnsw.com/destinations/snowy-mountains/kosciuszko-national-park

Snowy Mountains Snow Resorts



Whether you're a family of beginners, expert skiers and snowboarders, or somewhere in the middle, there's a resort to suit your needs in the

Snowy Mountains. Family friendly Charlotte Pass and Selwyn Snowfields gently tempt beginner and intermediate skiers and boarders, while Perisher and Thredbo offer plenty of action both on the slopes and après-ski.

Photo: Barrakee Ski Lodge

Internet: www.visitnsw.com/destinations/snowy-mountains/selecting-a-resort

Fishing



This is the premier trout fishing region in New South Wales and it takes over as the most popular sporting activity come the spring melt. Brown,

rainbow and brook trout, as well as Atlantic salmon, breed and prosper here. It's possible to go fishing in winter, but only on lakes and reservoirs, as most streams are closed from late June until the first weekend of October. You can also fish at Lake Eucumbene, Lake Jindabyne and Khancoban Pondage to enjoy the best fishing in the region. A licence is required - so obtain it online or at one of the many fishing retailers in

the area.

Online licence: www.dpi.nsw.gov.au/fisheries/recreational/licence-fee

Photo: Snowy Mountains Trout Festival

Internet: www.visitnsw.com/things-to-do/adventure-and-sport/fishing-and-boating

Bombala Platypus Reserve



Visit the Bombala Platypus Reserve to see one of Australia's most endearing indigenous species. Early mornings or late afternoons are the

best times to see platypuses. Spot them in the reserve along the Delegate River, platypus walk, and from the viewing platform. The award-winning Paddle with the Platypus program is offered during summer.

Photo: Suzanne Dunning - Cooma Visitors Centre

Address: Delegate Road, Bombala, NSW 2632

Phone: +61 2 6458 4622

Internet: www.visitnsw.com/destinations/snowy-mountains/bombala-area/bombala/attractions/bombala-platypus-reserve

Yarrangobilly Caves



These magnificent limestone caves feature delicate shawls, grand columns, underground pools and amazing chambers. You can

explore five caves created from a belt of limestone laid down about 440 million years ago. The caves are set inside the deep gorges and rugged bluffs of the Yarrangobilly River Valley at the north of Kosciuszko National Park. Bring bathers to enjoy the natural thermal pool which is a constant 27°C.

Photo: Murray Vanderveer - NSW Government

Address: Yarrangobilly Caves, Kosciuszko, NSW 2642

Phone: +61 2 6454 9597

Internet: www.visitnsw.com/destinations/snowy-mountains/kosciuszko-national-park/kosciuszko/attractions/yarrangobilly-caves

Kosciuszko Express Chairlift



The Kosciuszko Express Chairlift is a great way to enjoy the spectacular views of Thredbo. At nearly 2 km long, the ride takes 15 minutes one way

and offers spectacular valley views as you are lifted 560 vertical metres to the closest access point to Mount Kosciuszko. The scenic chairlift is open 365 days a year.

Photo: Kosciuszko Express Chairlift

Address: Friday Drive, Thredbo, NSW 2625

Opening hours: Open daily

Phone: 1300 020 589

Internet: <https://www.visitnsw.com/destinations/snowy-mountains/kosciuszko-national-park/thredbo/attractions/kosciuszko-express-chairlift>

Snowy Mountains Hydro Discovery Centre



The Snowy Hydro Discovery Centre showcases the story of the Snowy Mountains Hydro-Electric Scheme, one of Australia's biggest

and greatest feats in engineering and construction. With seven power stations - two of which are underground, 16 major dams, and over 140 km of trans-mountain tunnels, it is a symbol of Australian endeavour at its best. The various models, exhibits and interactive displays in the centre explain the sheer scope of this iconic development.

Photo: Snowy Mountains Hydro Discovery Centre

Address: Monaro Highway, Cooma, NSW 2630
 Opening hours: 8am - 5pm Monday to Friday. 9am - 2pm
 Saturday and Sunday and public holidays.
 Phone: +61 2 6453 2004 or toll free 1800 623 776
 Internet: <https://www.visitnsw.com/destinations/snowy-mountains/cooma-area/cooma/attractions/snowy-mountains-hydro-discovery-centre>

EVENTS



Jenny Solomon

Discover rural Australian culture with the wide variety of music, sports, art, wine, and food events held in the Snowy Mountains throughout the year.

Bombala Bike Show



Motorcycle enthusiasts are invited to enter the Bombala Bike Show competition. Categories include Best Vintage (pre 1949), Best Classic

(1949-1989), Best Custom and Most Unique. Winners are rewarded with prizemoney and a trophy. Enjoy live music entertainment and the Flair Action Sports Freestyle trials show. On-site camping is available.

Photo: Bombala Bike Show
 Address: Bombala, NSW 2632
 Phone: +61 2 6458 4622
 Internet: www.visitnsw.com/events/bombala-bike-show

Bombala Show



This is a traditional country show, held in March, and features the best of the region. Visit the pavilion to enjoy local produce, homemade cakes, preserves, floral displays, and arts and crafts stalls. Other show highlights include livestock exhibits, yard dog trials, trade demonstrations, and historic engineer and machinery displays.

Photo: Bombala Visitors Centre
 Address: Bombala Showground, Wellington Street, Bombala, NSW 2632
 Phone: +61 2 6458 4622
 Internet: www.visitnsw.com/events/bombala-show

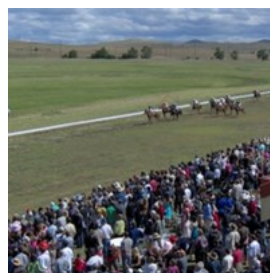
Bredbo Sheep Dog Trials



Experience country life and watch the skills of owner and dog as they work together to herd sheep. Run over three days in November, Bredbo Sheep Dog Trials has a number of categories from novice through to open championships.

Photo: Shirley blyton - Cooma Visitors Centre
 Address: Bredbo Recreational Grounds, Bredbo, NSW 2626
 Phone: +61 2 6454 4108
 Internet: www.visitnsw.com/events/annual-bredbo-sheep-dog-trials

Cooma Sundowners Cup



Head to the Ti Tree Racecourse for the biggest race day in Cooma, held annually on the first Saturday in December. The

Sundowner's Cup is the main race, named in honour of the Australian film "The Sundowners". Released in 1960, the movie was filmed in and around Cooma and Adaminaby and starred Robert Mitchum and Deborah Kerr.

Photo: Cooma Race Club

Address: Ti Tree Racecourse, Cooma, NSW 2630

Internet: www.visitnsw.com/destinations/snowy-mountains/cooma-area/cooma/events/cooma-sundowners-cup

Cooma Rodeo



The Cooma Rodeo offers great spectator viewing. Events include the open bronc ride, open bull ride, open bare back, steer wrestling, calf roping, and ladies barrel race. The rodeo is held in February.

Photo: Jenny Solomon

Address: Cooma Showground, Cromwell Street, Cooma, NSW 2630

Phone: 1800 635 525

Internet: www.visitnsw.com/events/cooma-rodeo

Festival of the Falling Leaf



The banks of the Tumut River set the scene for the Festival of the Falling Leaf in Bila Park. Enjoy live entertainment, market stalls, and an evening fireworks display amid the spectacular changing colours of the Snowy Mountains in autumn.

Photo: Festival of the Falling Leaf

Address: Wynyard Street, Bila Park, Tumut, NSW 2720

Phone: +61 2 6941 2555

Internet: www.visitnsw.com/destinations/snowy-mountains/tumut-area/tumut/events/festival-the-falling-leaf

Hume and Hovell Ultra 50/100



This ultra marathon covers part of the Hume and Hovell Walking Track which closely follows the historic route taken by the eponymous explorers

on their 1824 expedition to Port Phillip Bay.

There are two events - 50 km and 100 km course - which follow a mixture of walking tracks and fire trails and reach an elevation over 1,240 metres.

Photo: Adam Wilson - Greybox Images Photography

Address: Tumbarumba, NSW 2653

Phone: +61 2 6922 4882

Internet: www.visitnsw.com/destinations/snowy-mountains/tumbarumba-area/tumbarumba/events/hume-hovell-ultra

Jindabyne's Man From Snowy River Rodeo



Established in 1943, the annual rodeo's highlights include open and novice bulls, saddle broncos, bareback horses and ladies barrel race. Held in

December, it's always a great day out for the family with side shows, food stalls, barbecue and bar facilities available.

Photo: Jenny Solomon

Address: Jindabyne Sports Grounds, Jindabyne, NSW 2627

Internet: www.visitnsw.com/destinations/snowy-mountains/jindabyne-area/jindabyne/events/jindabynes-man-snowy-river-rodeo

Numeralla Folk Festival



This traditional folk festival is held over three consecutive days and takes in Australia Day, on January 26. A free event offering entertainment

and on-site camping, enjoy live music, poetry, dance, markets, dips in the river, yarns around the campfire and convivial conversation. There's also a children's program.

Photo: Numeralla Folk Festival

Address: Numeralla Township, Snowy Mountains, NSW 2630

Phone: +61 2 6453 3254

Internet: www.visitnsw.com/events/numeralla-folk-festival

Snowy Mountains Trout Festival



Whatever your style - bait, spin, fly or troll - the Snowy Mountains Trout Festival offers a great week of fishing for all ages. Take your

catch-of-the-day to one of the nine weigh-in stations around the region for your chance to win cash and prizes. The event is held in late spring.

Address: Various locations from Jindabyne to Adaminaby.

Internet: www.visitnsw.com/destinations/snowy-mountains/cooma-area/adaminaby/events/snowy-mountains-trout-festival

Snowy Ride



Explore the picturesque roads of the Snowy Mountains during this weekend motorcycle ride through checkpoints located at Adaminaby,

Dalgety, Berridale, Jindabyne, Cooma, Bombala, Khancoban, Charlotte Pass and Thredbo. The annual ride is held in November and raises money for childhood cancer research.

Internet: www.visitnsw.com/events/snowy-ride

Thredbo Blues Festival



Listen to some of the country's best blues music at this weekend festival in January featuring a combination of outdoor shows and

intimate performance spaces including restaurants and bars. Festival pass holders gain entry to all music venues and can enjoy unlimited rides on the Kosciuszko Express Chairlift.

Address: Thredbo Resort, Friday Drive, Kosciuszko National Park, NSW 2642

Phone: +61 2 6459 4100

Internet: <https://www.visitnsw.com/destinations/snowy-mountains/kosciuszko-national-park/events/thredbo-blues-festival>

Tumbafest



The township of Tumbarumba celebrates music, food and wine on the last weekend of February each year.

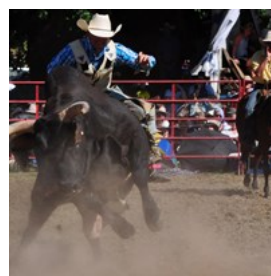
Highlights include live music, wine tasting, a farmers' market, extensive food stalls, as well as activities and entertainment for kids.

Photo: James Giddings - Tumbafest

Address: The Creekscape, Tumbarumba, NSW 2653

Internet: www.visitnsw.com/destinations/snowy-mountains/tumbarumba-area/tumbarumba/events/bendigo-bank-tumbafest

Tumbarumba Rodeo



This annual event on New Year's Day is a full Australian Professional Rodeo Association Championship Rodeo event. Event highlights

include a local barrel race, stallion chute out, steer challenge, saddle bronc, and bull ride.

Address: Tumbarumba Showgrounds, Tumbarumba, NSW
2653

Phone: +61 2 6948 2607

Internet: www.visitnsw.com/events/tumbarumba-rodeo

THE TOWNS OF THE SNOWY MOUNTAINS



Murray Vanderveer; Destination NSW

A rich cultural heritage that's helped shape the Australian identity, the Snowy Mountains are untameable high country dotted with charming townships. This is a very large area, even in Australian terms; Kosciuszko National Park itself covers almost 700,000 hectares, so allow time to explore the townships in this beautiful terrain.

Adaminaby



Discover an angler's haven on the banks of Lake Eucumbene. With the capacity to hold nine times the volume of Sydney Harbour, the

original river was dammed to form the lake which is the central storage for the Snowy Mountains Hydro-Electric Scheme. It also meant the township had to be relocated with more than 100 buildings being dismantled and re-erected. The area is a great winter base for the family friendly Mount Selwyn ski resort which is a 40-minute drive away. After the snow season, the town transforms into a summer resort with plenty of fishing, horseriding, bushwalking and

water-skiing. The historic town of Kiandra and the Yarrangobilly Caves are nearby.

Photo: Destination NSW

Internet: www.visitnsw.com/destinations/snowy-mountains/jindabyne-area/adaminaby

Cooma



This gold-rush town on Monaro Plains is the largest town in the Snowy Mountains and the gateway to the ski fields. Cooma has been home to

graziers, prospectors and the many surveyors, engineers and hydrographers who sought to harness the power of the mighty rivers for the Snowy Mountains Hydro-Electric Scheme.

Discover its rich history along the Lambie Town Walk, and explore art galleries, craft stores, restaurants, and other attractions.

Photo: Don Fuchs

Internet: www.visitnsw.com/destinations/snowy-mountains/cooma-area/cooma

Jindabyne



This town sits on the banks of its namesake lake against a stunning backdrop of soaring mountains. The area is a haven for adventurers

and nature lovers with walking, mountain biking, horseriding, four-wheel driving, whitewater rafting, canoeing, kayaking and other water sports. In summer, trout can be found in the lakes, rivers and streams. In the winter, the area is great base to explore the ski fields at Thredbo and Perisher. Jindabyne was relocated in the late 1960s when the hydro-electric scheme called for the flooding of the original town, which now lies

submerged under the lake.

Photo: Murray Vanderveer; Destination NSW

Internet: www.visitnsw.com/destinations/snowy-mountains/jindabyne-area/jindabyne

Khancoban



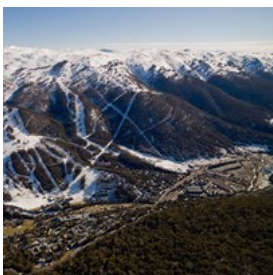
Tucked into the foothills of the western face of the Snowy Mountains, this picturesque town was originally built to house the workers and families

(over 100,000 migrants from some 30 countries) during the construction of the hydro-electric scheme. Beautifully landscaped with trees, parks and gardens, it overlooks a tranquil lake which is central to popular trout streams; the Khancoban Pondage is stocked with Atlantic salmon, brown trout and rainbow trout. Water activities including fishing, boating, whitewater rafting, canoeing, and water skiing are the adventure sports of choice here.

Photo: Jon Armstrong

Internet: www.visitnsw.com/destinations/snowy-mountains/tumbarumba-area/khancoban

Thredbo



This picturesque alpine village is a place for all seasons. A popular ski resort, the place is abuzz with skiers, snowboarders and snow

fans in the winter. As the white slopes turn green in the spring, hikers and bikers make the most of the magnificent natural bushland scenery. There's also golf, tennis, swimming and fly fishing. Ride the Kosciuszko Express Chairlift for spectacular views of this area.

Photo: Thredbo Alpine Village

Internet: www.visitnsw.com/destinations/snowy-mountains/kosciuszko-national-park/thredbo

Tumbarumba



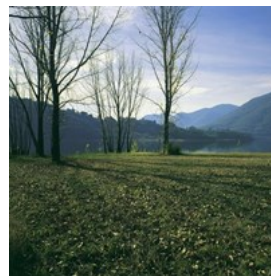
This charming township is filled with vineyards, sheep stations, streams and well-conserved heritage buildings.

Retrace the steps of the famous trek made by explorers Hume and Hovell on their way to Port Phillip in 1824 along a 12 km walking track that takes in gold mining sites and waterfalls.

Photo: Don Fuchs

Internet: www.visitnsw.com/destinations/snowy-mountains/tumbarumba-area/tumbarumba

Tumut



Aboriginal for "quiet resting place by the water", this is a great year-round destination for nature lovers and adventurers. Choose from

trout fishing, water skiing, canoeing, caving, sailing, bushwalking, golf and tennis. The town's charm rests with the changing seasons and the majestic scenery. On the 2 km Tumut River Walk you can admire the birdlife of the Riverglade Wetlands. And the many historic buildings and remnants reflect a vibrant heritage of the pioneers who settled here.

Photo: Paul Sinclair

Internet: www.visitnsw.com/destinations/snowy-mountains/tumut-area/tumut

DO AND SEE



Perisher

Home to beautiful alpine wilderness, the Snowy Mountains present a stunning vista of rivers, mountains, valleys and glacial lakes. Enjoy great skiing and snowboarding in the cooler months, and bushwalking, mountain biking, horseriding and fishing in the warmer months.

Australian Alps Walking Track



This is a 655 km walk following ridges and plains through some of the highest parts of Australia - more than ten peaks exceed 2,100

metres. The Australian Alps are the largest alpine area in the country, extending from Canberra and the Brindabella range, through the Snowy Mountains, and along the Great Dividing Range. You can walk the track in 10 weeks, but many choose to explore shorter sections such as the Jagungal Wilderness Area. Experience and maps required.

Photo: Mike Gebicki

Address: Walahalla To Canberra (including Kosciusko National Park) Sawpit Creek NSW 2627

Opening hours: Accessible at most times but can be closed during winter.

Phone: +61 2 6450 5600

Internet: www.visitnsw.com/destinations/snowy-mountains/kosciuszko-national-park/sawpit-creek/attractions/australian-alp

s-walking-track

Boggy Creek Show



The Boggy Creek Show highlights the Snowy Mountains' heritage, including the skills and stories of the stockmen from the high country,

and Australia's unique humour. The two-hour live performance includes whip cracking, sheep shearing, working dogs, farm animals, mustering, and horsemanship.

Address: 55 Boggy Creek Road, Tumbarumba, NSW 2653

Phone: +61 2 6948 8273 or +61 428 488 273

Internet: www.visitnsw.com/destinations/snowy-mountains/tumbarumba-area/tumbarumba/attractions/boggy-creek-show

Bombala Platypus Reserve



Visit the Bombala Platypus Reserve to see one of Australia's most endearing indigenous species. Early mornings or late afternoons are the

best times to see platypuses. Spot them in the reserve along the Delegate River, platypus walk, and from the viewing platform. The award-winning Paddle with the Platypus program is offered during summer.

Address: Delegate Road, Bombala, NSW 2632

Phone: +61 2 6458 4622

Internet: www.visitnsw.com/destinations/snowy-mountains/bombala-area/bombala/attractions/bombala-platypus-reserve

Charlotte Pass Ski Resort



At 1,760 metres above sea level, Charlotte Pass is Australia's highest village. During the winter, the resort town is only accessible via

over-snow transport. The ski-in, ski-out terrain allows only a limited number of guests in the village at any time, meaning no crowds and no long queues during the ski season. Gentle slopes are available for beginners, with intermediate terrain, challenging advanced runs, and cross-country trails also on offer. Charlotte Pass lookout and boardwalk are accessible during the summer months by car.

Photo: Charlotte Pass Snow Resort

Address: Kosciuszko Road, Charlotte Pass, NSW 2630

Phone: +61 2 6457 5245 or toll free 1800 026 369

Internet: www.visitnsw.com/destinations/snowy-mountains/kosciuszko-national-park/charlotte-pass

Cooma Golf Club



This 18-hole golf course has bentgrass greens and top class fairways with the added pleasure of abundant native wildlife to see while walking

between holes. Take in magnificent views looking across the Monaro Plains and out to the mountains.

Address: Golf Course Road, Cooma, NSW 2630

Phone: +61 2 6452 2243

Internet: www.visitnsw.com/destinations/snowy-mountains/cooma-area/cooma/attractions/cooma-golf-club

Gaden Trout Hatchery



Covering more than one hectare of picturesque parkland on the banks of the Thredbo River, this is one of the country's main centres for rearing and

breeding cold water sports fish. Four species are farmed here: brook, brown and rainbow trout, and Atlantic salmon. Learn how the hatchery works and feed the big fish as they surface in the ponds. Fishing is not permitted at the hatchery.

Address: 224 Gaden Road, Jindabyne, NSW 2627

Opening hours: Visitors Centre opens 10am - 4pm daily.

Guided tours depart daily 10am and 2pm. Closed ANZAC Day, Christmas Day and Boxing Day.

Phone: +61 2 6451 3400

Internet: www.visitnsw.com/destinations/snowy-mountains/jindabyne-area/jindabyne/attractions/gaden-trout-hatchery

Khancoban Pondage



Khancoban Pondage is a 3 km lake that forms part of the Snowy Mountains Hydro-Electric Scheme. Stunning scenery surrounds the lake:

Australia's highest snow-covered mountains in winter, blossoming wildflowers in spring, and falling leaves of brilliant hues in autumn. The lake is popular with anglers as it holds Atlantic salmon, brown and rainbow trout, and some redfin.

Address: Khancoban Pondage, Khancoban, NSW 2642

Phone: +61 2 6948 3333

Internet: www.visitnsw.com/destinations/snowy-mountains/tumbarumba-area/khancoban/attractions/khancoban-pondage

Kosciuszko Express Chairlift



The Kosciuszko Express Chairlift is the best way to enjoy the spectacular views of Thredbo. At nearly 2 km long, the ride takes 15 minutes one way

and offers spectacular valley views as you are lifted 560 vertical metres to the closest access point to Mount Kosciuszko. The scenic chairlift is open 365 days a year.

Address: Friday Drive, Thredbo, NSW 2625

Opening hours: Open daily

Phone: 1300 020 589

Internet: <https://www.visitnsw.com/destinations/snowy-mountains/kosciuszko-national-park/thredbo/attractions/kosciuszko-express-chairlift>

Kosciuszko National Park



The magnificent scenery of alps, glacial lakes, limestone caves, grasslands and woodlands has been listed as a UNESCO

World Biosphere Reserve. The national park is home to Mount Kosciuszko, the highest point in Australia and named after a Polish patriot and democratic leader. Enjoy great skiing in winter; and in spring and summer a blanket of wildflowers blazes across the mountains, crisscrossed by walking tracks which reveal spectacular views over the rooftop of the country.

Photo: Jeffrey Drewitz; Destination NSW

Phone: +61 2 6450 5600 or toll free 1300 361 967

Internet: www.visitnsw.com/destinations/snowy-mountains/kosciuszko-national-park

Lake Eucumbene



Sitting at an elevation of 1,200 metres and expanding across 145 sq km, this is the largest lake in the Snowy Mountains, holding nine

times the volume of Sydney Harbour. The lake is one of the best fisheries in the Australian highlands and holds rainbow trout, brown trout and Atlantic salmon. In the warmer months, the lake comes alive with a wide variety of sports including water skiing, wind surfing, swimming, and boating (life jacket required).

Address: Buckendarra Road, Cooma, NSW 2630

Phone: 1800 623 776

Internet: www.visitnsw.com/destinations/snowy-mountains/cooma-area/cooma/attractions/lake-eucumbene

Lambie Town Walk



Discover Cooma's rich history as you take this self-guided tour around Cooma's historic landmarks. This 5 km walk includes three

heritage areas recognised by the National Trust including the Court House precinct built in the 1860s; Lambie Street, the first commercial centre of the township; and Church Hill with its examples of 19th and 20th century religious and educational buildings. Walk, drive or bike the route, with maps available from the Cooma Visitor Information Centre.

Address: 119 Sharp Street, Cooma, NSW 2630

Phone: +61 2 6455 1742 or toll free 1800 636 525

Internet: www.visitnsw.com/destinations/snowy-mountains/cooma-area/cooma/attractions/lambie-town-walk

Mosaic Time Walk



The Cooma-Monaro Time Walk was a community project for Australia's Bicentennial Year of 1988. Colour and design students of Cooma TAFE

College created a series of forty tiles, each one square metre, depicting historical community icons and events. These include Monaro Aboriginals, the discovery of Monaro by European settlers, Mount Kosciuszko, bushrangers, and aspects of daily mountain life such as sheep, cattle, and mountain horses.

Address: Centennial Park, Cooma, NSW 2630

Opening hours: Accessible at all times

Phone: +61 2 6455 1742 or toll free 1800 636 525

Internet: www.visitnsw.com/destinations/snowy-mountains/cooma-area/cooma/attractions/mosaic-time-walk

Perisher Ski Resort



Perisher links four alpine villages - Perisher Valley, Smiggin Holes, Guthega and Blue Cow - and offers Australia's largest ski terrain and the highest

ski lift point at 2,034 metres. The four villages are connected by a Skitube, ski trails and a total of 45 lifts, with downhill skiing available on 1,245 hectares and more than 100 km of cross-country trails.

Photo: Gary Grant for Perisher

Address: Kosciuszko Road, Perisher Valley, NSW 2624

Phone: +61 2 6459 4495

Internet: www.visitnsw.com/destinations/snowy-mountains/kosciuszko-national-park/perisher-valley

Pioneer Women's Hut Museum



This is one of the best and most unusual small museums in Australia. Cleverly themed, it reflects the ingenuity of women in finding

solutions to the challenges of looking after a family in early rural Australia. The accessibility and provenance of the diverse collection adds to its reputation.

Address: The Glenroy Heritage Reserve, Wagga Road, Tumbarumba, NSW 2653

Opening hours: Open Wednesdays 11am - 4pm. Weekends and public holidays 10am - 4pm.

Phone: +61 2 6948 3333

Internet: www.visitnsw.com/destinations/snowy-mountains/tumbarumba-area/tumbarumba/attractions/pioneer-womens-hut-museum

Selwyn Snowfields



To the north of Kosciuszko National Park, Selwyn Snowfields are a great place for learners and families. The slopes progress across the

mountain from beginner to advanced trails. This is a gentle way to experience a snow holiday and have fun skiing, tobogganing, snow-tubing or building a snowman.

Photo: Australian Capital Tourism

Address: Selwyn Snowfields, Kings Cross Road, Mount Selwyn, NSW 2630

Phone: +61 2 6454 9488 or toll free 1800 641 064

Internet: www.visitnsw.com/destinations/snowy-mountains/kosciuszko-national-park/mount-selwyn

Skiing



The alpine region of the NSW snowfields within Kosciuszko National Park offers terrain that challenges experts along with gentler slopes for beginners. Explore the various terrain parks of the Snowy Mountains ski resorts. The fun continues in the evening with night skiing.

Photo: Shannon Pawsey

Internet: www.visitnsw.com/things-to-do/adventure-and-sport/skiing-and-snowboarding

Snowy Hydro Discovery Centre



The Snowy Hydro Discovery Centre showcases the story of the Snowy Mountains Hydro-Electric Scheme, one of Australia's biggest and greatest feats in engineering and construction. The various models, exhibits, and interactive displays explain the sheer scope of this iconic development.

Address: Monaro Highway, Cooma, NSW 2630

Opening hours: 8am - 5pm Monday to Friday. 9am - 2pm Saturday and Sunday and public holidays.

Phone: +61 2 6453 2004 or toll free 1800 623 776

Internet: <https://www.visitnsw.com/destinations/snowy-mountains/cooma-area/cooma/attractions/snowy-mountains-hydro-discovery-centre>

Snowy Scheme Museum



The museum is a multi-dimensional insight into how the Snowy Mountains Hydro-Electric Scheme influenced the nation. It highlights the achievements of the engineers, workers, and

machinery and the role they played on the development of modern Australia.

Address: Snowy Mountains Highway, Adaminaby, NSW 2629

Opening hours: Open Saturday and Sunday 10am. - 2pm.

Other times by appointment.

Phone: +61 2 6454 1643

Internet: <http://www.visitnsw.com/destinations/snowy-mountains/cooma-area/adaminaby/attractions/snowy-scheme-museum>

Stewarts Information and Gallery



A fascinating display on the history of Adaminaby from 1870 to 2004.

Browse through historic photographs, newspaper clippings, maps and

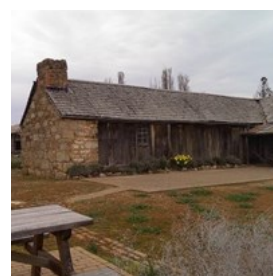
documents on the history of the town and area, Snowy Mountains Hydro-Electric Scheme, Kiandra and the ski run at Selwyn Snowfields.

Address: 3 Denison Street, Adaminaby, NSW 2629

Phone: + 61 2 6454 2285

Internet: <http://www.visitnsw.com/destinations/snowy-mountains/cooma-area/adaminaby/attractions/stewarts-visitor-information-and-gallery>

The Early Settlers Hut



The Early Settlers Hut is not only of unique local significance, but has associations going back to the earliest establishment of

European settlement in the colony. The building is of the type erected by squatters in the mid 1840s when they were first given some form of permanent occupancy, and it undoubtedly dates from this period. The hut is situated 1 km south-west of the township of Delegate.

Address: Bonang Highway, Delegate, NSW 2633

Opening hours: Open every day

Phone: +61 2 6458 3555

Internet: www.visitnsw.com/destinations/snowy-mountains/bombala-area/bombala/attractions/the-early-settlers-hut

Thredbo Downhill Bike Run



The long ski runs of winter transform into a downhill mountain-biking haven in the warmer months. Access is by the Kosciuszko Express

Chairlift every day from November to May. Offering a completely different experience to cross-country riding, it's the longest lift-accessed downhill mountain-biking run in Australia.

Address: Friday Drive, Thredbo, NSW 2625

Opening hours: Open daily 9am - 4.30pm.

Phone: +61 2 6459 4100

Internet: www.visitnsw.com/destinations/snowy-mountains/kosciuszko-national-park/thredbo/attractions/thredbo-downhill-bike-run

Yarrangobilly Caves



These magnificent limestone caves feature delicate shawls, grand columns, underground pools and amazing chambers. You can

explore five caves created from a belt of limestone laid down about 440 million years ago. The caves are set inside the deep gorges and rugged bluffs of the Yarrangobilly River Valley at the north of Kosciuszko National Park. Bring bathers to enjoy the natural thermal pool which is a constant 27°C.

Address: Kosciuszko National Park, Kosciuszko, NSW 2642

Opening hours: Open daily 9am - 5pm. Closed on Christmas Day.

Phone: +61 2 6454 9597

Internet: www.visitnsw.com/destinations/snowy-mountains/kosciuszko-national-park/kosciuszko/attractions/yarrangobilly-caves

aves

Yarramba Horse Riding



Where the Monaro Plains meet the Snowy Mountains, Yarramba is renowned for its excellent horsemanship and well-trained horses. It

specialises in personal trail rides for beginners and experienced riders, allowing just you and your family or friends to ride out and experience one of Australia's finest landscapes.

Address: 1760 Dry Plains Road, Cooma, NSW 2630

Phone: +61 2 6453 7204

Internet: www.visitnsw.com/destinations/snowy-mountains/cooma-area/cooma/attractions/yarramba-horse-riding

RESTAURANTS, CAFÉS AND BARS



Tackling the mountains at any time of the year can work up an appetite. Whether you're seeking a casual bite or a gourmet experience, the Snowy Mountains' villages and towns offer tempting delights to suit a wide range of budgets and tastes.

Brumby Bar & Bistro



Located within the Aspire Alpine Gables Motel, this bistro serves delicious food, from hearty hot breakfasts to steaks, and offers a self-serve salad and vegetables bar. The venue also features late night entertainment with bands and DJs.

Address: Aspire Alpine Gables Motel, 2 Clyde Street, Jindabyne, NSW 2627
Phone: +61 2 6456 2555 or toll free 1800 645 625
Internet: www.visitnsw.com/destinations/snowy-mountains/jindabyne-area/jindabyne/accommodation/aspire-alpine-gables-and-brumby-bar

Cuisine on Lake Crackenback



Enjoy waterfront dining in the Snowy Mountains at this award-winning restaurant. Set beside a tranquil lake, floor to ceiling windows offer spectacular views of Thredbo's slopes. Fresh local ingredients are used to create their seasonal a la carte and degustation menus.

Address: Lake Crackenback Resort & Spa, 1650 Alpine Way, Jindabyne, NSW 2627
Phone: +61 2 6451 3000
Internet: www.visitnsw.com/destinations/snowy-mountains/jindabyne-area/jindabyne/restaurants/cuisine-on-lake-crackenback

House Of Ullr Grill



The House of Ullr Grill is a contemporary-style restaurant offering relaxed and casual dining. Medieval doors, wood and stonework reflect the Nordic influence of this lodge, named

after the Norwegian god of snow. The menu features steaks, chicken, lamb, and seafood grills, along with their specialty cook-your-own-style dinners.

Address: Lot 89 Mowamba Place, Thredbo, NSW 2625
Phone: +61 2 6457 6210
Internet: www.visitnsw.com/destinations/snowy-mountains/kosciuszko-national-park/thredbo/accommodation/house-of-ullr

Rose's Lebanese

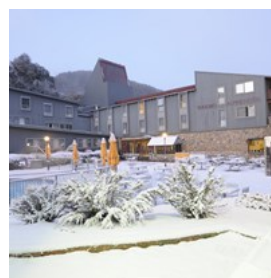


This kitchen has been creating authentic Middle Eastern dishes for more than a decade. Much of the produce is sourced locally or grown by the

owners in their own 1.6-hectare garden. The traditional meze plates allow you to sample an array of dishes.

Address: 69 Massie Street, Cooma, NSW 2630
Phone: +61 2 6452 4512
Internet: www.visitnsw.com/destinations/snowy-mountains/cooma-area/cooma/restaurants/roses-lebanese-restaurant

Sante Churrasco



This is an authentic Brazilian barbecue house in the rodizio all-you-can-eat style. Pay a fixed price and the waiters bring a variety of

food to the table until you say enough. Cuts of meat arrive every few minutes and most are served right off the skewer and sliced at the table.

Address: Thredbo Alpine Hotel, Squatters Run, Thredbo Village, NSW 2625
Phone: +61 2 6457 6083
Internet: www.visitnsw.com/destinations/snowy-mountains/kosciuszko-national-park/thredbo/accommodation/thredbo-alpine-hotel

Segreto



Segreto is an intimate dining experience located in the Thredbo Alpine Hotel. The concept is 'Secret Australiana'; the cuisine is focused on

locally sourced native ingredients and is complemented by an extensive wine list.

Address: Thredbo Alpine Hotel, Friday Drive, Thredbo, NSW 2625

Opening hours: Open only in winter Tuesday - Sunday from 6pm.

Phone: +61 2 6459 4200

Internet: www.visitnsw.com/destinations/snowy-mountains/kosciuszko-national-park/thredbo/restaurants/segreto-at-the-thredbo-alpine-hotel

The Dining Room



The huge glass facade of The Dining Room looks out over Perisher Front Valley and is a great location to relax and enjoy a delicious meal.

The three-course set menu changes daily with three options per course. The chefs produce innovative cuisine using fresh produce from the Snowy Mountains, Southern NSW and the NSW South Coast.

Address: Man From Snowy River Hotel, Kosciuszko Road, Perisher Valley, NSW 2624

Phone: +61 2 6457 5234 or toll free 1800 020 583

Internet: www.visitnsw.com/destinations/snowy-mountains/kosciuszko-national-park/perisher-valley/accommodation/the-man-snowy-river-hotel

The Terrace



The award-winning Terrace Restaurant offers a relaxed dining experience. The food is simple and wholesome, just what is needed after

a long day on the hill. Sit back and relax, enjoy the atmosphere of being in the mountains as you are served an array of dishes with classic flavours accompanied by fine wines and fantastic cocktail.

Address: The Denman Hotel, 21 Diggings Terrace, Thredbo Village, NSW 2625

Phone: +61 2 6457 6222

Internet: www.visitnsw.com/destinations/snowy-mountains/kosciuszko-national-park/thredbo/restaurants/the-terrace-restaurant-at-the-denman-hotel-and-spa

Wildbrumby Schnapps Distillery



A boutique distillery, Wildbrumby produces schnapps from locally sourced fruit to create a wide range of flavours including pink lady apple,

pear william and peach, as well as butterscotch and hot chilli. The 8-hectare property features a cellar door, café, art gallery, studio and working raspberry farm.

Address: Cnr. Wollondibby Road and Alpine Way, Jindabyne, NSW 2627

Phone: +61 2 6457 1447

Internet: www.visitnsw.com/destinations/snowy-mountains/jindabyne-area/jindabyne/attractions/wildbrumby-schnapps-distillery

SHOPPING



From ski gear and chic boutiques to cool-climate wines and fishing equipment, shopping in the Snowy Mountains is easy. You'll find what you need to enjoy the glorious mountains, valleys, rivers and lakes - stunning whatever the season.

Alpine Sports



Alpine Sports is open year-round and offers a good selection of ski and snowboard equipment for hire or purchase. Browse a wide range of clothing, accessories and headwear in store or online.

Address: Nugget's Crossing, Jindabyne, NSW 2627

Phone: +61 2 6456 2900

Internet: <https://www.visitnsw.com/destinations/snowy-mountains/jindabyne-area/jindabyne/hire/alpine-sports-jindabyne>

Bredbo CWA Village Markets



Held on the fourth Sunday of each month from 9 am to 3 pm, the market hosts a variety of indoor and outdoor stalls. Browse second-hand

books and music collections, local arts and crafts, woodwork, homewares, and taste a great range of local produce.

Address: Bredbo Community Hall, Monaro Highway, Bredbo,

NSW 2626

Phone: +61 402 620 335

Internet:

www.visitnsw.com/events/bredbo-cwa-village-markets

Cooma Rotary Markets



Held on the third Sunday of each month, these markets offer a variety of crafts, pottery, clothing, prints, bric-a-brac and woodwork. Local

lavender products, plants, and nursery and garden implements also feature alongside local produce. A jumping castle in the park keeps children entertained.

Address: Centennial Park, Sharp Street, Cooma, NSW 2630

Phone: +61 437 601 350

Internet: www.visitnsw.com/events/cooma-rotary-markets

JK Gallery & Mountain Shop



Find exclusive pieces for your home décor including fine local artwork, original sculptures, hand-crafted wooden furniture,

antiques, homewares, and exotic furs and rugs from around the world. The store also stocks clothing and accessories including Scottish cashmere sweaters, scarves, gloves, and wraps.

Address: 8 Squatters Run, Thredbo Village, NSW, 2625

Phone: +61 2 6457 6990

Internet: www.visitnsw.com/destinations/snowy-mountains/kosciuszko-national-park/thredbo/attractions/jk-gallery-and-mountain-shop

Jolly Berries



The cool climate of the Snowy Mountains produces high quality and intensely flavoured blueberries. Pick your own at this family owned

farm or buy punnets in season between December and March. Other blueberry products available for sale include jams, sauces, toppings, port, wine, and sparkling wine.

Address: 247 Wagga Road, Tumbarumba, NSW 2653

Phone: +61 427 760 446

Internet: www.visitnsw.com/destinations/snowy-mountains/tumbarumba-area/tumbarumba/attractions/jolly-berries

Lavender House



The town of Bombala and the surrounding Monaro region are ideally suited to the growing of high quality lavender. Discover locally produced lavender

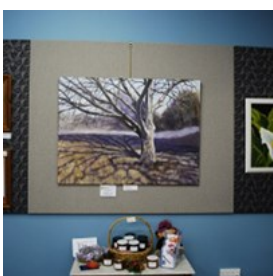
products while you learn about the history of the area. Essential lavender oil distillations and talks can be arranged with prior notice.

Address: Railway Park, Monaro Highway, Bombala, NSW 2632

Phone: +61 2 6458 4622

Internet: www.visitnsw.com/destinations/snowy-mountains/bombala-area/bombala/attractions/lavender-house-in-railway-park

Little Gallery



The Little Gallery is operated by the Monaro Art Group and displays paintings, photographs, crafts and sculptures by talented local artists and

craftsmen. All items displayed are available for

purchase.

Address: Hain Centre, Sharp Street, Cooma, NSW 2630

Phone: +61 2 6453 3118

Internet: www.visitnsw.com/destinations/snowy-mountains/cooma-area/cooma/attractions/monaro-art-groups-little-gallery

Nest



Nest is a café, bookstore and boutique armchair cinema, all in one cosy space in the mountains. Open Friday and Saturday nights for

gourmet pizza and blackboard dinner specials, you can wine and dine while watching a movie.

Address: 56 Winton Street, Tumbarumba, NSW 2653

Phone: +61 2 6948 2950

Internet: www.visitnsw.com/destinations/snowy-mountains/tumbarumba-area/tumbarumba/attractions/nest-cinema-cafe-books

Rhythm Snow Sports



Open 24 hours a day during winter, Rhythm Snow Sports has an extensive selection of more than 600 rental skis and 200 demonstration

skis. In Cooma since 1985, it's one of the largest snow sports stores in Australia.

Address: 8 Sharp Street, Cooma, NSW 2630

Phone: +61 2 6452 2303

Internet: www.visitnsw.com/destinations/snowy-mountains/cooma-area/cooma/hire/rhythm-snowsports

Ribbonwood Antiques



Located on the farm of Ribbonwood Cottages, this antique store has a selection of restored antique furniture and collectables all sourced

from the local area.

Address: 116 Lacmalac Road, Tumut, NSW 2720

Phone: +61 2 6947 2527

Internet: www.visitnsw.com/destinations/snowy-mountains/tumut-area/tumut/accommodation/ribbonwood-cottages

Snow City



Snow City's retail range includes a wide variety of equipment including skis, boards, goggles, helmets, gloves, skate gear and more. Their Demo Service

Van provides an on-slope mobile service for those wanting to swap or adjust their demo equipment.

Address: 4 Kosciuszko Road (next to Caltex), Jindabyne, NSW 2627

Phone: +61 2 6456 1177

Internet: www.visitnsw.com/destinations/snowy-mountains/jindabyne-area/jindabyne/hire/snow-city

Snowy Mountain Cookies



Baked with quality ingredients including couverture chocolate, free range eggs and real butter, these cookies are made without artificial

colours, flavours or additives and no preservatives. Watch through the glass kitchen door to see how it all happens in the bakehouse.

Address: 7a Lee Avenue, Leesville Estate, Jindabyne, NSW

2627

Phone: +61 2 6457 1333

Internet: www.visitnsw.com/destinations/snowy-mountains/jindabyne-area/jindabyne/attractions/snowy-mountains-cookies

Steve Williamson's Tackle Shop



This tackle shop offers equipment hire for lure spinning, bait fishing and fly fishing including waders and fly vests. Boat anglers are also catered

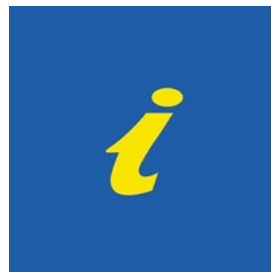
for with boat trolling tackle hire including specialist equipment like lead core trolling lines and deep trolling downriggers.

Address: Shop 1, Snowline Service Centre, Kosciuszko Road, Jindabyne, NSW 2627

Phone: +61 2 6456 1551

Internet: www.visitnsw.com/things-to-do/tours/steve-williamsons-trout-fishing-adventures

Tumut Visitor Information Centre



This visitor centre offers a large range of souvenirs, books, gifts, maps and other regional merchandise available for purchase. And find out all

there is to see and do in the Tumut region as well as many other tourist destinations.

Address: 5 Adelong Road, Tumut, NSW 2720

Phone: +61 2 6947 7025

Internet: www.visitnsw.com/visitor-information-centres/tumut-region-visitor-information-centre

Wilgro Orchards



A roadside stall sells cherries and a wide range of apples directly to the public during the picking season, which varies depending on the fruit.

Address: 4066 Batlow Road, Batlow, NSW 2730

Phone: +61 427 491 224

Internet: www.visitnsw.com/destinations/snowy-mountains/tumut-area/batlow/attractions/wilgro-orchards

ACCOMMODATION



Stay on-snow in winter, or rest and relax with a bush retreat in the warmer months. A vast selection of lodges, hotels, B&Bs and farm stays are dotted around the beautiful terrain of spectacular mountains, valleys, lakes and rivers.

Aalberg Chalet



This chalet is only minutes walking distance from Lake Jindabyne and offers warm hospitality, friendly service and superb food at great

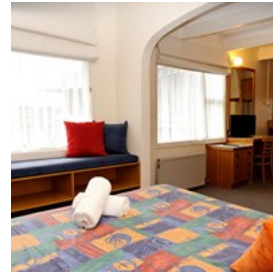
prices. The 17 guest rooms in this intimate chalet all have en suites. Relax by the fire in the guest lounge, or enjoy the recreation room with pool table and video games.

Address: 8 Kirwan Close, Jindabyne, NSW 2627

Phone: +61 2 6456 2647

Internet: www.visitnsw.com/destinations/snowy-mountains/jindabyne-area/jindabyne/accommodation/aalberg-chalet-jindabyne

Alpenhorn Lodge



This lodge offers an enjoyable, affordable holiday in the heart of the village. Winter or summer, friendly staff cater for all guests in a

variety of rooms whether you are a solo traveller, couple, family or group. Guest change facilities and luggage storage are available on arrival and departure days in winter, enabling you to extend your skiing time. Bike storage is provided during summer.

Address: Buckwong Place, Thredbo Village, NSW 2625

Phone: +61 2 6457 6223

Internet: www.visitnsw.com/destinations/snowy-mountains/kosciuszko-national-park/thredbo/accommodation/alpenhorn-lodge

Barrakee Ski Lodge



This ski-in, ski-out property is located near the North Perisher T-Bar and Interceptor quad chairlift, offering easy access to all areas of the

Perisher ski fields. Complimentary oversnow transfers are available on arrival and departure.

Address: North Perisher Road, Perisher Valley, NSW 2624

Phone: +61 2 6457 5313

Internet: www.visitnsw.com/destinations/snowy-mountains/kosciuszko-national-park/perisher-valley/accommodation/barrakee-ski-lodge

Bernti's Mountain Inn



In the heart of Thredbo, Bernti's is close to ski lifts, shops and village services. In addition to their mountain view and twin/double rooms, four two-room suites with kitchenettes are also available for families and larger groups. Bernti's café and bar specialises in late afternoon and evening après-ski with gourmet tapas, wine and schnapps.

Address: 4 Mowamba Place, Thredbo, NSW 2625

Phone: +61 2 6457 6332

Internet: www.visitnsw.com/destinations/snowy-mountains/kosciuszko-national-park/thredbo/accommodation/berntis-mountain-inn

Candlelight Lodge



All lodge rooms have beautiful views of the mountain ski slopes. The free village shuttle bus stops outside the front door during winter.

On-site facilities include wireless broadband internet, ski and drying room facilities, sauna and in-house masseuse. Kids are catered for with table tennis, table soccer, board games, activity sheets, a wide selection of videos, and family rooms have a DVD player and X-Box.

Address: 32 Diggings Terrace, Thredbo, NSW 2625

Phone: +61 2 6457 6318 or toll free 1800 020 900

Internet: www.visitnsw.com/destinations/snowy-mountains/kosciuszko-national-park/thredbo/accommodation/candlelight-lodge

Crackenback Farm Guesthouse



This country style guesthouse and restaurant is set in a stunning alpine location between Lake Jindabyne and Thredbo, and

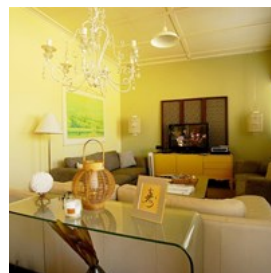
minutes from the SkiTube Train. It's a perfect retreat all year with award-winning gourmet meals. Enjoy log fires, a licensed bar, full-sized billiard table, indoor pool, sauna, yoga and body treatments.

Address: 914 Alpine Way, Thredbo Valley, Crackenback, NSW 2627

Phone: +61 2 6456 2601

Internet: <https://www.visitnsw.com/destinations/snowy-mountains/jindabyne-area/jindabyne/accommodation/crackenback-farm-restaurant-and-guesthouse>

Cromwell House



Built in the late 1800s, Cromwell House's rich architectural details have been extensively restored to maintain features including the original

fireplaces, mantels and light fixtures. The three historic queen-size guest rooms are individually decorated with fine antiques and original paintings. The specialty breakfasts use organic ingredients from the house's gardens and orchard. Located in the centre of Cooma, Cromwell is less than a five-minute walk from the main street's shops and restaurants.

Address: 1 Cromwell Street, Cooma, NSW 2630

Phone: +61 418 223 000

Internet: www.visitnsw.com/destinations/snowy-mountains/cooma-area/cooma/accommodation/cromwell-house

Ecocrackenback



This eco-tourism resort features 18 luxurious private suites on 16 hectares of unspoilt bushland along the Alpine Way. Each suite is

furnished in a modern, minimalist style and features a full length deck with a barbecue, offering views of Mount Crackenback. Enjoy the eco-trail around the property and stop at the Wild Brumby Schnapps Distillery.

Address: 11 Wollondibby Road, Thredbo Valley, Crackenback, NSW 2627

Phone: +61 2 6457 2000

Internet: www.visitnsw.com/destinations/snowy-mountains/jindabyne-area/jindabyne/accommodation/ecocrackenback

Eiger Chalet



This family owned and operated chalet is 100 metres from Perisher's quad chairlift which accesses the entire Perisher ski field. Each

room has individually controlled heating, an en suite, television/DVD and Wi-Fi access. There is a guest lounge area and games area with table tennis, pool table and mini theatre room, as well as a mini gym, sauna and spa.

Address: Kosciuszko Road, Perisher Valley, NSW 2624

Phone: +61 2 6457 5209

Internet: www.visitnsw.com/destinations/snowy-mountains/kosciuszko-national-park/perisher-valley/accommodation/eiger-chalet

Rydges Horizons Resort



All 120 self-contained apartments feature private balconies offering impressive views over Lake Jindabyne and across to the mountain

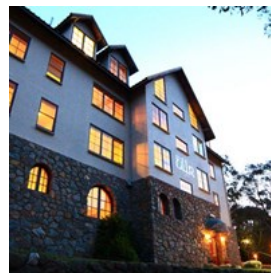
range. Room configurations include studio and alcove bedroom apartments, through to multi-room executive suites with spas. In-house facilities include an indoor salt water pool, tennis court, movies, plus direct access to the Lake Jindabyne walking track.

Address: 10 Kosciuszko Road, Jindabyne, NSW 2627

Phone: +61 2 6456 2562

Internet: www.visitnsw.com/destinations/snowy-mountains/jindabyne-area/jindabyne/accommodation/rydges-horizons-snowy-mountains

House Of Ullr



Named after the Norwegian god of snow, the huge medieval doors, wood and stonework reflect a Nordic influence. The lodge is in the heart

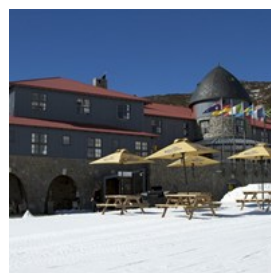
of Thredbo Village, with an easy level walk to the ski lifts, nightlife, shops, overnight parking and the Thredbo courtesy shuttle bus (winter only).

Address: Lot 89 Mowamba Place, Thredbo Village, NSW 2625

Phone: +61 2 6457 6210

Internet: www.visitnsw.com/destinations/snowy-mountains/kosciuszko-national-park/thredbo/accommodation/house-of-ullr

Kosciuszko Chalet Hotel

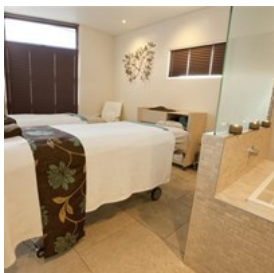


Established in 1930, this ski-in/ski-out hotel is located within the family friendly Charlotte Pass Ski Resort. All rooms offer valley or mountain

views. Frosty's Kids Club is complimentary, offering supervised entertainment for children aged 3 - 13 years throughout the day and into the night, including a children's dinner.

Address: Kosciuszko Road, Charlotte Pass, NSW 2630
Phone: +61 2 6457 5245 or toll free 1800 026 369
Internet: www.visitnsw.com/destinations/snowy-mountains/kosciuszko-national-park/charlotte-pass/accommodation/kosciuszko-chalet-hotel

Novotel Lake Crackenback Resort And Spa



Nestled in the Thredbo Valley on the border of Kosciuszko National Park, this resort is set on 61 hectares of natural bushland and offers self-contained Lake View apartments and Mountain View chalets and studios. The resort features two restaurants, Cuisine and Alpine Larder, and a day spa with massage and beauty treatments. Complimentary activities include mountain bike and walking trails, golf, archery, canoes and paddle boats. During winter, the resort offers guests close access to NSW ski resorts operating a complimentary shuttle bus service to Perisher's Skitube. Thredbo is a short 15-minute drive along the Alpine Way.

Address: 1650 Alpine Way, Crackenback, NSW 2627
Phone: +61 2 6451 3000 or 1800 020 524
Internet: www.visitnsw.com/destinations/snowy-mountains/jindabyne-area/jindabyne/accommodation/lake-crackenback-resort-and-spa

Man From Snowy River Hotel



Open only in winter, Perisher's largest hotel has welcomed guests since 1960. Located just 20 metres from the Perisher Skitube and 200

metres from the Front Valley lifts, guests can enjoy a full day on the slopes. The dining room's glass facade looks out over Front Valley and two bars offer evening enjoyment. The hotel also features a gym, steam room and beauty salon.

Address: Kosciuszko Road, Perisher Valley, NSW 2624
Phone: +61 2 6457 5234 or toll free 1800 020 583
Internet: www.visitnsw.com/destinations/snowy-mountains/kosciuszko-national-park/perisher-valley/accommodation/the-man-snowy-river-hotel

Marritz Hotel



A European-style hotel, Marritz is located 250 metres from the Village 8 Express chairlift and Front Valley ski area of Perisher Valley. Enjoy views of the slopes from the restaurant, bar, hotel rooms, and through floor to ceiling windows in Perisher's only indoor heated swimming pool. Igloo Kids Club is also available.

Photo: Marritz Hotel
Address: Porcupine Road, Kosciuszko National Park, NSW 2000
Phone: +61 2 6457 5220 or toll free 1800 767 756
Internet: www.visitnsw.com/destinations/snowy-mountains/kosciuszko-national-park/kosciuszko/accommodation/marritz-hotel

Paddys River Cottage Retreat



This retreat is on 24 hectares of a tranquil farmland at the base of the Snowy Mountains. The cool waters of Paddys River flow through the property. The cottage provides fully self-contained accommodation for up to eight people. Trout fishing is on your doorstep, with the Paddys River Falls within walking distance.

Address: 1743 Tooma Road, Tumbarumba, NSW 2653

Phone: +61 2 6948 2746

Internet: www.visitnsw.com/destinations/snowy-mountains/tumbarumba-area/tumbarumba/accommodation/paddys-river-cottage-retreat

Pender Lea



Pender Lea is on more than 1,000 hectares of bushland, offering the ideal location for a mountain holiday in winter or summer. It's 13 km from Jindabyne and 20 km from Thredbo for easy access to the ski fields. Choose from a luxury Swiss-style chalet nestled among the alpine bush, a renovated historic Snowy Mountains high country hut, or fully-equipped park cabins, ideal for the budget-conscious traveller.

Address: 1 Post Office Lane, Crackenback, NSW 2627

Phone: +61 2 6456 2088 or toll free 1800 352 088

Internet: www.visitnsw.com/destinations/snowy-mountains/jindabyne-area/jindabyne/accommodation/pender-lea-chalets

Perisher Manor



Conveniently located next to the Village 8 Express chairlift, this ski-in/ski out hotel offers a wide range of accommodation options with mountain

budget rooms and deluxe manor suites. Features include the Base 1720 Bar and Restaurant, Edge Café and Bar, the Pub Family Food Court, open fire, television lounge, laundry, and ski lock and drying room.

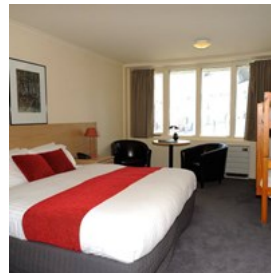
Address: Kosciuszko Road, Kosciuszko National Park, Perisher Valley, NSW 2624

Phone: +61 2 6457 5291 or toll free 1800 636 360

Internet: www.visitnsw.com/destinations/snowy-mountains/kosciuszko-national-park/perisher-valley/accommodation/perisher-manor

er-manor

Perisher Valley Hotel



Set in the heart of Perisher Valley, this ski-in/ski-out hotel is only minutes away from the chairlifts and offers extensive views over

Perisher. The hotel is conveniently located atop the Perisher Centre, with access to Snowsports School, Snowy Day Care, Snowsports Hire, retail shops, and a range of restaurants and bars.

Address: 1 Kosciuszko Road, Perisher Valley, NSW 2624

Phone: +61 2 6459 4455 or 1300 881 252

Internet: www.visitnsw.com/destinations/snowy-mountains/kosciuszko-national-park/perisher-valley/accommodation/perisher-valley-hotel

Pure Chalet



This spacious five-bedroom, five-bathroom chalet offers flexible bedding arrangements to suit the individual requirements

of up to 10 guests. Access to the village and ski areas can be by foot to the Kosciuszko Express chairlift about five minutes away, or by the free shuttle bus.

Address: Alpine Way, Thredbo, NSW 2625

Phone: +61 2 6457 7132

Internet: www.visitnsw.com/destinations/snowy-mountains/kosciuszko-national-park/thredbo/accommodation/pure-chalet

Queen's Cottage



Queen's Cottage was built to provide accommodation for Her Majesty Queen Elizabeth II and accompanying dignitaries during their

visit to the Snowy Mountains Hydro-Electric Scheme in 1963. Today, two cabins, two houses and seven studio apartments offer private and spacious accommodation options to suit a range of budgets. Native forest lies at the back door and a fertile valley unfolds from the balcony.

Address: Lot 5, Pendergast Street, Khancoban, NSW 2642

Phone: +61 2 6076 9033

Internet: <https://www.visitnsw.com/destinations/snowy-mountains/tumbarumba-area/khancoban/accommodation/queens-cottage>

Ribbonwood Cottages



On the banks of the Tumut River and within walking distance to the pretty township of Tumut (and close to Selwyn Snowfields), Ribbonwood

Cottages offer well-appointed, self-contained accommodation for families and couples. Located on a 40-hectare working farm with private river access for trout fishing or watching playtpus play, Ribbonwood is peaceful, secluded and picturesque.

Address: 116 Lacmalac Road, Tumut, NSW 2720

Phone: +61 2 6947 2527

Internet: www.visitnsw.com/destinations/snowy-mountains/tumut-area/tumut/accommodation/ribbonwood-cottages

Snowy Wilderness Resort



This resort is a true Australian high country adventure. Ride horseback through the rugged mountains terrain, explore the

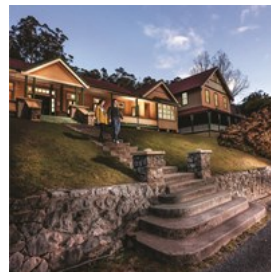
wilderness by four-wheel drive, camp under the stars or relax in luxury accommodation. Five styles of accommodation are offered: eco-friendly lodges, a lakeside apartment, a country cottage, a family homestead as well as genuine camping - all with the option of gourmet meals featuring fresh local produce and fine wines.

Address: 2911 The Barry Way, Ingebyra, Jindabyne, NSW 2627

Phone: +61 414 544 503 or toll free 1800 218 171

Internet: www.visitnsw.com/destinations/snowy-mountains/jindabyne-area/jindabyne/accommodation/snowy-wilderness-resort

Yarrangobilly Caves House



if you're cave exploring or on a fishing expedition, make sure to stay in this historic resort built in 1901. Marvel at the beautiful natural scenery

and bathe in the thermal pool before retiring to the comfort of Caves House. The two-storey section, built in 1917, has been refurbished to its former glory with superb rooms, en suites and an overall elegance. The two wings sleep seven or nine people and come with a fully-equipped kitchen, dining room, family room, verandah and barbecue area.

Photo: Murray Vanderveer

Address: Snowy Mountains Highway, Kosciuszko, NSW 2642

Phone: +61 2 6454 9597 or 1300 072 757

Internet: www.visitnsw.com/destinations/snowy-mountains/kosciuszko-national-park/kosciuszko/accommodation/yarrangobilly

lly-caves-house

ESSENTIAL INFORMATION



Perisher

The Snowy Mountains are easy to access by road, air and coach. With such a vast area covering so many spectacular natural attractions, take your time and explore the beauty of the splendid region and enjoy the many outdoor adventures.

Getting to the Snowy Mountains

A number of regular ski bus services run from Sydney, Brisbane and Canberra, to Perisher and Thredbo. From Perisher, travellers take a short trip on over-snow transport to Charlotte Pass.

Jindabyne, the closest town to Kosciuszko National Park, is an excellent base for exploring the region. The town is a five-and-a-half-hour drive from Sydney, and an additional 40 minutes to Thredbo and Perisher. Plenty of bus and coach services operate between the town and the snowfields.

Tumut is the northern gateway to the Snowy Mountains, with regular NSW Trainlink rail/coach services from Sydney and Melbourne. It's an easy one hour's drive from here to the Selwyn Snowfields. As there is no accommodation on this part of the mountain, many people choose to stay in the nearby

townships of Adaminaby or Talbingo, a short 30- to 40-minute drive from the slopes.

Regular flights and intercity trains connect Canberra with other major cities. From Canberra airport and major city bus terminals, frequent winter bus services make the two-and-a-half-hour journey to Perisher and Thredbo.

Alpine touring is very popular along the Kosciuszko Alpine Way and the Snowy Valleys Way. Note that special regulations apply in winter within Kosciuszko National Park. If you're driving a two-wheel-drive vehicle, you must carry snow chains from the June long weekend to the October long weekend. Be sure to check the Bureau of Meteorology weather reports for the Snowy Mountains before setting off.

Internet: www.visitnsw.com/destinations/snowy-mountains/getting-to-snowy-mountains

By Bus



Many bus companies operate from Canberra or Sydney to various towns and villages in the Snowy Mountains. Here are some options: Cooma

Coaches

- Provide a regular bus service linking the villages and towns of the Snowy Mountains.
- Phone: +61 2 6452 4841
- www.coomacoaches.com.au

Greyhound

- Operate daily services, and extra on Friday, Saturday and Sunday from Sydney Central Station to Jindabyne and Thredbo via Bullocks Flat, and from Canberra Airport to the ski resorts.

- Phone: 131 499 (Australia wide)
- www.greyhound.com.au

Murrays Coaches

- Operate services from Canberra and Sydney to Thredbo
- Phone: 132 251 (Australia wide)
- www.murrays.com.au

NSW Trainlink

- Daily rail/coach service (except Saturdays) from Sydney to Tumbarumba and Tumut
- www.nswtrainlink.info

Snow Alliance

- Operate a scheduled service from Canberra to Thredbo
- Phone: 1800 280 121 (Australia wide)
- www.snowalliance.com.au

Summit Coaches

- Operate chartered services from Canberra and Sydney to the NSW ski fields (during snow season only)
- Phone: 1800 608 008
- www.summitcoaches.com.au

Transborder

- Operate a daily service from Canberra to Thredbo
- Phone: +61 2 6299 3722
- www.transborder.com.au

Photo: Pierre-Luc Auclair

Internet: www.visitnsw.com/destinations/snowy-mountains/getting-to-snowy-mountains

By Car

Most people travel to the region by car as this is the most flexible and rewarding way of exploring the mountains with its diverse and spectacular scenery.

- The Snowy Mountains region is well-served by a network of good roads: the Alpine Way runs from Jindabyne to Khancoban; the Snowy Mountains Highway between Tumut and Cooma; the Monaro Highway runs south from Canberra; and the Elliot Way runs from Tumbarumba to Cabramurra. All these routes pass through beautiful landscapes.

- From Sydney it's an easy six-hour drive down the Hume Expressway. Before reaching Yass, turn left for Canberra/Cooma and follow the signs to Cooma. (This is a 460 km drive). Upon leaving Cooma, there is an option of taking the Kosciuszko Road to Jindabyne, Thredbo and Perisher Valley, or taking the Snowy Mountains Highway to Adaminaby and on into the northern end of the Kosciuszko National Park.

- There is a fee for vehicles using Kosciuszko National Park, with stations on three of the main roads entering the park. Summer day passes are \$A17 per vehicle, winter day passes are \$A29.

- Some minor roads may be unsuitable for caravans and hire cars. Always check road conditions before departure by calling the traffic hotline on 132 701.

- It's compulsory to carry properly fitting snow chains if you are driving a two-wheel-drive vehicle from the June long weekend until the October long weekend on the following roads: Kosciuszko Road from the park boundary at Thredbo River; the Alpine Way between Thredbo and Tom Groggin; and the Island Bend/Guthega Road for its full length.

Internet: <http://www.visitnsw.com/destinations/snowy-mountains/getting-to-snowy-mountains>

Canberra Airport



There are many daily flights to Canberra from Sydney, Adelaide, Brisbane and Melbourne, with connecting flights from other capital

cities

Qantas

- Phone: 13 13 13 (Australia wide)
- Website: www.qantas.com.au

Fly Pelican

- Phone: +61 2 4965 0111
- Website: www.flypelican.com.au

Virgin Blue

- Phone: 13 67 89 (Australia wide)
- Website: www.virginaustralia.com

In winter coach transfers from Canberra Airport to the snow resorts can be arranged.

Greyhound

- Phone: 1300 473 946 or 1300 GREYHOUND (Australia wide) or international +61 7 4690 9999
- Website: www.greyhound.com.au

Transborder

- Phone: +61 2 6299 3722
- Website: www.transborder.com.au

Photo: Juan Garces

Internet: www.canberraairport.com.au

Taxis



Cooma Radio Taxis •
Address: 24 Baron St,
Cooma, NSW 2630 •
Phone: +61 2 6452 7777
Jindabyne Taxi Service •
Address: Alpine Way,

Thredbo Village, NSW, 2625

- Phone: +61 2 6457 2444

Photo: Taxi

Internet: www.visitnsw.com/destinations/snowy-mountains/getting-to-snowy-mountains

Pharmacies

Adelong Pharmacy

- Address: 109 Tumut St, Adelong, NSW 2729
- Phone: +61 2 6946 2555

Central Chemist

- Address: 155 Sharp St, Cooma, NSW 2630
- Phone: +61 2 6452 1599

Hooks Pharmacy

- Address: 140-148 Sharp St, Cooma, NSW 2630
- Phone: +61 2 6452 1744

Jindabyne Pharmacy

- Address: Nuggets Crossing, Snowy River Ave, Jindabyne, NSW 2627
- Phone: +61 2 6456 2977

Monaro Chemist

- Address: 82 Vale St, Cooma, NSW 2630
- Phone: +61 2 6452 1599

Russell St Pharmacy

- Address: 20a Russell St, Tumut, NSW 2720
- Phone: +61 2 6947 9886

Tumut Pharmacy

- Address: 69 Wynyard St, Tumut, NSW 2720
- Phone: +61 2 6947 1179

Village Pharmacy

- Address: Mowamba Place, Thredbo Village, NSW 2625
- Phone: + 61 2 6457 6140

Telephone

Country Code: (+61)

Area Code: (02)

Electricity

220-240 V

Population

The population is approximately 34,500. Around three million people visit Kosciuszko National Park each year.

Currency

Australian Dollar (AUD) \$1 = 100 cents

Opening hours

General shopping hours are Monday to Friday 9am – 5.30pm, with late night shopping on Thursday until 9pm. Most shops are open Saturday from 9am – 4pm, and Sunday 10am – 4pm.

Internet

www.visitnsw.com/destinations/snowy-mountains

Newspapers

Cooma-Monaro Express (Tuesdays and Thursdays)
Snowy River Echo (monthly)
Summit Sun (weekly)
The Monaro Post (weekly)
Sydney Morning Herald (NSW)
The Daily Telegraph (NSW)
The Australian (National)

Emergency numbers

Police, Ambulance, Fire 000

Tourist information

Cooma Visitor Information Centre
119 Sharp Street, Cooma, NSW 2630
Opening hours: 9 - 5pm daily. Winter extended hours 7am - 5pm. Closed on Christmas and New Years Day
Phone: +61 2 6450 1742 or toll free 1800 636 525
Website: www.visitcooma.com.au

Khancoban Visitor Centre
Scott Street, Khancoban NSW 2627
Opening hours: 9am – 4pm (closed between 12pm and 1pm). Closed Christmas Day.
Phone: +61 2 6076 9373 or +61 2 6076 9382
Website: www.nationalparks.nsw.gov.au

Snowy Region Visitor Centre
Kosciuszko Road, Jindabyne NSW 2627
Opening hours: Open winter 8.30am - 5pm daily; summer 9am - 4pm.
Phone: +61 2 6450 5600
Website: www.nationalparks.nsw.gov.au

Tumbarumba Visitor Centre
10 Bridge St, Tumbarumba NSW 2653
Opening hours: 9.30am - 5pm from Monday to Friday. Open 10am - 4pm on Saturday and 11am - 3pm on Sunday. Closed Christmas Day and Good Friday.
Phone: +61 2 6948 3333
Website: www.visittumbashire.com.au

Tumut Region Visitor Information Centre
5 Adelong Road, Tumut NSW 2720
Opening hours: 9am - 5pm daily. Closed Christmas Day.
Phone: +61 2 6947 7025
Website: www.tumut.nsw.gov.au