



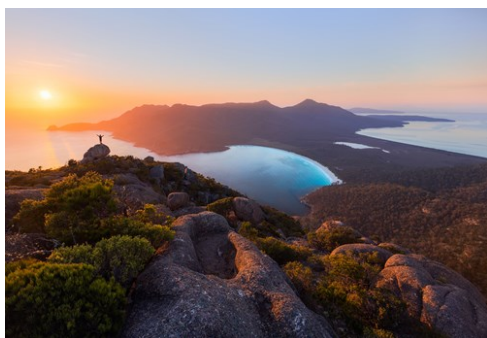
in collaboration with Tourism Tasmania

Photo: Tourism Tasmania



Tasmania is an island at the edge of the world. Small enough to get around easily, big enough to explore diverse landscapes and make countless discoveries. In one day wake to the cleanest air in the world; hear stories of early convict life; cruise soaring sea cliffs; sip whisky at cellar doors; and devour paddock-to-plate food. In Tasmania, anything's possible.

NOTE: This Guide has been limited to 20 points of interest per section. For the full guide, please visit ArrivalGuides.com



Tourism Tasmania

Go where no one has
VENTURED BEFORE!

5 Off the Beaten Track
Destinations in Asia

ArrivalGuides

Foto: WhitefoxChen / Shutterstock

Top 5



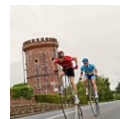
Flinders Island
With only 900 residents, Flinders is largely untouched wilderness and someti...



Narawntapu National Park
There's good reason some consider this park the 'Serengeti of Tasmania.' It'...



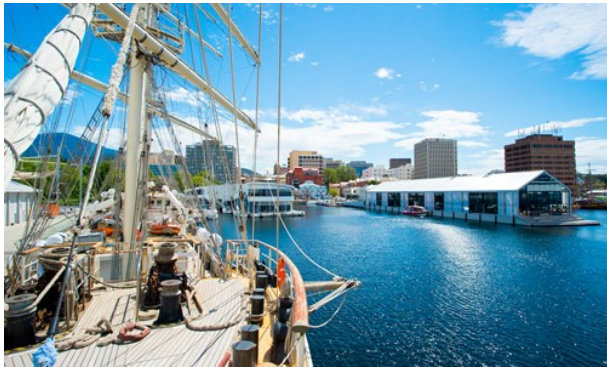
Cataract Gorge
Laze away the day at Cataract Gorge Reserve only a few minutes from the cent...



Evandale
Evandale is a Georgian village south of Launceston, best known for its 19th ...



HOBART AND SOUTH



Risk-taking artists, passionate producers, inventive chefs and soulful heritage bring light and shade to the capital city of Hobart. Flanked by mountains and waterways the city's cultural vibe meets the surrounding wilderness delivering dramatic results.

Bruny Island

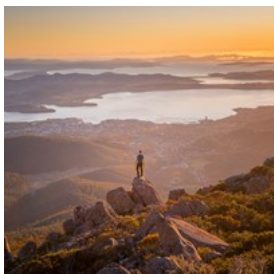


Bruny Island is known for its delicious produce and wine. Taste fresh seafood, sample fine Tasmanian whisky, eat handmade fudge and chocolate, pick berries and sample artisan cheeses.

Address: Bruny Island Tasmania

Internet: <http://www.discovertasmania.com.au/about/regions-of-tasmania/hobart-and-south/bruny-island>

Mt Wellington



In some cities you can take an elevator to the top of one of the tallest buildings in the world and be gobsmacked by extraordinary views.

Hobart doesn't need to do skyscrapers. At 1270 metres Mt Wellington is more than twice the height of the world's tallest building.

Internet: <http://www.discovertasmania.com.au/about/national>

-parks-and-wilderness/mt-wellington-park

Mount Field National Park (Russell Falls)



Here you'll find Russell Falls, one of the most photographed waterfalls in Tasmania. Its three elegant tiers, framed by lush vegetation, have

attracted visitors for more than a hundred years. Put on your walking shoes and explore one of its easy walking tracks only a fifteen minute stroll from the car park.

Internet: <http://www.discovertasmania.com.au/attraction/mtfieldnationalpark>

Richmond



Richmond is a picture-perfect village of cobbled streets, hand-made brick and mellow stone on the banks of the Coal River

and it's just 20 minutes out of Hobart. Walk across Australia's oldest bridge, built by convict labour between 1823 and 1825. Stand in the cell of the Richmond Gaol (1825), Australia's oldest goal, for an eerie insight into the hardships of early Van Diemen's Land convict life.

Internet: <http://www.discovertasmania.com.au/about/regions-of-tasmania/hobart-and-south/richmond>

Tasman Peninsula



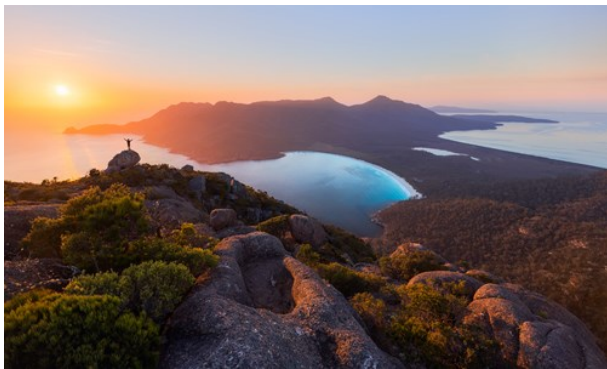
Explore the natural wonders the Tasman Peninsula. A place of breathtaking seascapes, some of the tallest sea cliffs in the world and

wild ocean views. From Eaglehawk Neck to Port

Arthur Historic Site, this fascinating journey is rich in convict history and natural beauty - but also thrilling adventure experiences that will take your breath away, encounters with sea and coastal wildlife that you will never forget and quality food and wine to savour and enjoy.

Internet: <http://www.discovertasmania.com.au/about/articles/tasman-peninsula>

WILDERNESS AND OUTDOORS



Tourism Tasmania

More than a third of Tasmania is protected in national parks, world heritage areas and reserves - yet the island's spellbinding landscape is easily accessible. Explore walking tracks, highland lakes, secluded beaches, caverns, and mountains. Play golf, ride downhill on a mountain bike, raft rivers and jump off dams. Tasmania also has abundant wildlife and is the only place you'll see Tasmanian devils in the wild.

Gordon River



A cruise down the Gordon River rewards with mirror-calm reflections of World Heritage Area rainforest. Gordon River Cruises and World

Heritage Cruises can take you down this ancient waterway stopping off at Sarah Island where

you'll get a history lesson as you walk among the ruins of this once notorious convict settlement.

Address: Gordon River Tasmania

Internet: www.discovertasmania.com.au

Blue Derby Mountain Bike Trail



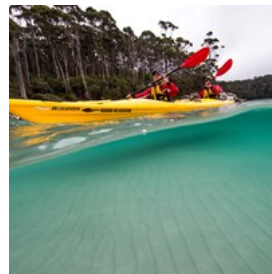
Riders worldwide are making tracks to Tasmania. Blue Derby is a network of trails that surround the town of Derby. Once the centre of a tin mining boom, these days it's the mountain bikers carving up the dirt. Cruise to the top of the hill. Tear downhill as fast as you can. Repeat.

Photo: Tourism Tasmania

Address: Derby Tasmania

Internet: www.ridebluederby.com.au

Roaring 40s Kayaking



Take a two-and-a-half-hour city paddle with fish and chips, a day tour around Hobart exploring cliffs, caves and beaches, a

multi-day expedition into the Tasmanian wilderness, or try an expedition amongst stunning landscapes as you glide far from the beaten paths of modern life.

Internet: www.roaring40skayaking.com.au

Email: info@roaring40skayaking.com.au

Gordon Dam Abseil



Climb over the edge of the railing and before you can say 'geronimo' you'll be well into your 140 metres of adrenaline-pumping descent - the longest commercial abseil in the Southern Hemisphere.

Photo: Tourism Tasmania

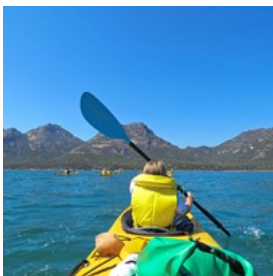
Address: 1 Anfield Street Glenorchy Tasmania

Phone: +61 3 6273 7722

Internet: www.aardvarkadventures.com.au

Email: info@aardvarkadventures.com.au

Freycinet Adventures



Sea kayak into the heart of Freycinet National Park - the contrasts are stunning. Pink granite mountains, sandy beaches and clear blue water.

Address: 2 Freycinet Drive, Coles Bay Tasmania

Phone: +61 3 6257 0500

Internet: www.freycinetadventures.com.au

Email: info@freycinetadventures.com.au

Pennticott Wilderness Journeys



Cruise along the rugged coast of Bruny Island to see Albatross, dolphins, seals and migrating whales or the Tasman Peninsula coastline to see

the highest sea cliffs in the Southern Hemisphere and Tasman Island.

Address: Bruny Island

Phone: +61 3 6234 4270

Internet: www.brunycruises.com.au

Email: info@pennticottjourneys.com.au

Devils@Cradle



It doesn't get much more Tasmanian than Cradle Mountain and Tassie devils. Keep an eye on the clock because the Devils@Cradle feeding

tour happens at 5.30pm sharp - or the devils get mad. This is a rare chance to observe these unique animals in the company of some fellow carnivorous marsupials - the eastern and spotted-tail quoll.

Address: 3950 Cradle Mountain Rd Cradle Mountain

Tasmania

Internet: www.devilsatcradle.com

Par Avion Wilderness Flights



Renowned for its flights into the Southwest National Park, a vast and special place of extraordinary natural values that forms part of

the Tasmanian Wilderness World Heritage Area, there's often more to a scenic flight with Par Avion. Fancy whisking that special someone away to devour oysters and wine on a picnic by the sea?

Address: 115 Kennedy Drive Cambridge, Tasmania

Phone: +61 3 6248 5390

Internet: www.paravion.com.au

Email: flights@paravion.com.au

Bicheno Penguin Tour



See wild little penguins emerge from the ocean and head for their homes in a natural rookery on an after-dark tour.

Established by locals to

protect the penguin population, the tour lets you get close to the penguins without disturbing their nightly journey. These are wild birds, so penguin numbers and arrival times vary with the life-cycle activity and weather, with larger numbers of 100 -125 birds from September to January. You can expect to get very close to a penguin on this tour.

Address: Bicheno Tasmania
Phone: +61 3 6375 1333
Internet: www.bichenopenguintours.com.au

Barnbougle Dunes Golf Course



Barnbougle Dunes, a golfing destination on the coast of Bridport that's been rated Australia's number one public course more than once. Tee off to the sound of crashing waves on a links course where sweeping beaches, farmland and manicured greens mix effortlessly. Challenge yourself to 18 holes followed by a Tasmanian whisky in the clubhouse.

Address: Bridport Tasmania
Phone: +61 3 6356 0094.
Internet: www.barnbougle.com.au

Bonorong Wildlife Sanctuary



Bonorong offers a very hands-on experience rare in other zoos and wildlife parks, allowing you to share special moments with Australia's wildlife. Tasmanian devils are active during the day, so you can view them any time. The park also looks after wombats, koalas, echidnas, birds and many more Tasmanian natives.

Address: 593 Briggs Road Brighton Tasmania

Phone: +61 3 6268 1184
Internet: www.bonorong.com.au

All4Adventure Quad bike tours



With four big rubber tyres beneath, accelerate up the sandy path on your way to the southern end of sweeping Friendly Beaches. As you wind through Eucalypt covered hills you might decide this is a terribly fun way to reach isolated nooks of the Freycinet Peninsula. Navigate boulder-filled valleys and drop into an abandoned mining cottage before reaching the coast. In true east coast style, your afternoon tea stop is a cracker with rolling turquoise waves and orange lichen laid out like a picnic rug across granite boulders. A thrilling quad bike adventure for those who seek a unique view of the Freycinet National Park.

Address: 1 Reserve Rd, Coles Bay Tasmania
Internet: www.all4adventure.com.au
Email: info@all4adventure.com.au

King River Rafting



Be swept away on the King River Rafting adventure on Tasmania's west coast. Your journey begins aboard the 118-year-old West Coast Wilderness Railway, Australia's only steam train of its kind. With rafts atop and rafters aboard, the train will travel through remote rainforests and incredible landscapes to Dubbil Barril where your journey takes a rapid turn. Here you'll swap comfort for courage as you plunge into the rapids of the mighty King River, which flows as fast as the adrenaline. Along the way, when the waters are calm, your guide will share stories of

the region's fascinating history.

Address: King River Tasmania

Internet: www.kingriverrafting.com.au

Email: kingriverrafting@bigpond.com

Cradle Mountain Canyons



If adventure, wilderness and action is that you're after - head to the alpine reaches of Cradle Mountain and climb into a wetsuit. Cradle

Mountain Canyons run trips where you jump, swim and abseil through ancient canyons.

Address: Cradle Mountain Tasmania

Internet: www.discovertasmania.com.au

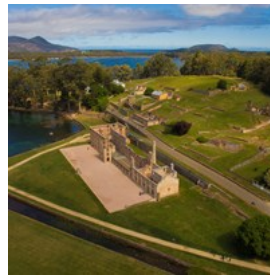
HISTORY AND HERITAGE



Tourism Tasmania and Poon Wai Nang

When it comes to history and heritage, the compact island state, Tasmania, is chock full. Tasmania is rich with stories, and there's no shortage of museums, or people to re-tell stories of the past. Explore the early lives of explorers, pioneers, and convicts. Make new discoveries—where they're least expected.

Port Arthur Historic Site



Discover an intriguing history that helped shaped Australia at the World Heritage-listed Port Arthur Historic Site. Port Arthur is the

best-preserved convict settlement in Australia and among the most significant convict era sites in the world.

Address: Port Arthur Tasmania

Internet: www.portarthur.org.au

West Coast Wilderness Railway



It is an engineering marvel, the world's steepest steam-operated railway. This is Tasmania's West Coast Wilderness Railway, and

it is 28 tonnes of special.

Today, passengers are moved by the same locomotives that began the run from Queenstown back in 1896. They take a comfortable 16-kilometre run through the wildlands, uphill through spectacular landscapes and down to a place called Dubbill Barrill, with stops for a little gold panning and sightseeing.

These locos were originally built to move copper ore for the Mount Lyell Mining and Railway Company, delivering the mine's deep riches out of a massive, landlocked deposit at Queenstown to the port of Strahan, and from there, to the world.

And every passenger is greeted by one of the line's original workhorses, a 28 tonne steam locomotive that's ready to roll - and guaranteed to raise a smile.

Address: Queenstown Tasmania

Internet: www.wcwr.com.au

Email: enquiries@wcvr.com.au

Bonnet Island Experience



The Bonnet Island Experience departing from Strahan visits a tiny island at Macquarie Harbour on Tasmania's west coast. Cruise in

comfort arriving on Bonnet Island just before dusk. Hear stories of shipwrecks, rescues, storms and survival. Visit a historic lighthouse, to learn how the keepers lived and worked, guiding ships into the harbour. The island is also home to a thriving colony of little penguins and short-tailed shearwaters. These amazing birds spend their days fishing at sea in all conditions, returning each evening at dusk, to their burrows on the island. Observing this phenomenon from close quarters is at the heart of The Bonnet Island Experience - a memorable and intimate encounter.

Address: Bonnet Island Tasmania

Internet: www.discovertasmania.com.au

ART AND CULTURE

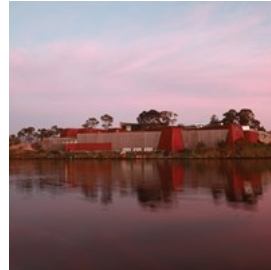


Tourism Tasmania and Adam Gibson

In a brave new art world Tasmania is no wallflower. Artists produce moving artworks that spill into galleries, museums, live music venues, markets, theatres, hotels and public spaces. A ferry ride to unconventional art museum Mona,

will deliver on every level, but inspiring art can be discovered across the island.

Mona, Museum of Old and New Art



Mona is a three level subterranean art space dug into a sandstone cliff face underneath an ambient vineyard - its lawns dotted with pink

bean bags. Australia's largest private museum its unconventional and challenging curatorial approach makes Mona a must-see for any visitor to Australia.

Address: 655 Main Rd, Berriedale

Phone: +61 3 6277 9900

Internet: www.mona.net.au

Tasmanian Museum and Art Gallery



The Tasmanian Museum and Art Gallery is the second oldest museum in Australia. Today, the gallery's collections sit in a stunning contemporary

design, sensitively integrated with the museum's heritage buildings. Known as TMAG to locals, the museum's art collection includes works from Tasmania's colonial period through to contemporary Australian and international artists.

Address: Dunn Place Hobart Tasmania

Opening hours: jksvb

Phone: +61 3 6165 7000

Internet: www.tmag.tas.gov.au

Email: tmagmail@tmag.tas.gov.au

LAUNCESTON AND NORTH



Northern Tasmania is an eclectic collection of boutique and playful experiences. Its charming city, Launceston, is full of character, eye-catching architecture, small shops fronts and interesting stores. It's the place for adventure, festivals, mountain bike tracks and world class golf courses.

Flinders Island



With only 900 residents, Flinders is largely untouched wilderness and sometimes eerily quiet - bordered by more than 120 deserted beaches and surrounded by at least 65 shipwrecks.

Internet: www.discovertasmania.com.au

Narawntapu National Park



There's good reason some consider this park the 'Serengeti of Tasmania.' It's quietly one of the best places to see wildlife. Come at dusk and Forester kangaroos perform - grazing and bounding across long open plains.

Address: National park in Bakers Beach, Tasmania

Phone: +61 3 6428 6277

Internet: <http://www.discovertasmania.com.au/about/national-parks-and-wilderness/narawntapu-national-park>

Cataract Gorge



Laze away the day at Cataract Gorge Reserve only a few minutes from the centre of Launceston. There are peacocks and wallabies, rock climbing and a swimming pool at this popular urban playground. Follow a pathway along the cliff face looking down onto the South Esk River. On the shady northern side, known as the Cliff Grounds, is a Victorian garden with ferns and exotic plants. Wander across the footbridge and take a chairlift ride across the river.

Address: Launceston Tasmania

Internet: www.launcestoncataractgorge.com.au

Evandale



Evandale is a Georgian village south of Launceston, best known for its 19th century buildings and relatively untouched streetscape. The town also has plenty of antique galleries, craft shops and even a stained-glass workshop to visit. Evandale is also home to the National Penny Farthing Championships - contested around a triangular circuit in the middle of the village during February. Enthusiasts come from around the world to contest the championship with market stalls, street performers and entertainment providing a country fair feel.

Address: Evandale Tasmania

Internet: www.discovertasmania.com.au

NORTH WEST AND WEST COAST



Pull back to a slower pace and soak in natural beauty, wild coastlines, picturesque towns and a slower lifestyle. Be transformed by fresh farm grown produce, waterfalls and the greatest expanse of cool temperate rainforest in Australia, and second largest in the world - The Tarkine.

Cradle Mountain



Cradle Mountain, at the northern end of the Cradle Mountain-Lake St Clair National Park, safeguards part of the Tasmanian World

Heritage Wilderness Area. The surrounding landscape is diverse and includes grassland, rainforest and ancient plants. The park also provides a rich habitat for wildlife including Tasmanian devils, quolls, platypus, echidna and several bird species. Embark on the Dove Lake Circuit track that hugs the lake shoreline for a pleasant, relatively flat six-kilometre walk beneath the towering spires of Cradle Mountain.

Address: Cradle Mountain Tasmania

Internet: <http://www.discovertasmania.com.au/about/regions-of-tasmania/north-west/cradle-mountain>

Strahan



Strahan is a charming harbour-side village set on the edge of the Tasmanian Wilderness World Heritage Area. Nestled on the shores of massive Macquarie Harbour, Strahan is the gateway to the World Heritage listed Franklin-Gordon Wild Rivers National Park. Boat cruises provide an unforgettable journey into the pristine temperate rainforests.

Address: Strahan Tasmania

Internet: www.discovertasmania.com.au

Stanley



Stanley is a town of perfectly preserved colonial buildings, quaint cafes and quality B&B style cottages, all sheltering in the imposing shadow of the Nut, an immense flat topped, volcanic plug rising 150 metres straight up from the water's edge.

Address: Stanley Tasmania

Internet: www.discovertasmania.com.au

King Island



King Island lies off the North West Coast of Tasmania, surrounded by rugged coastline and full of fresh seafood, famously good produce and some of the cleanest air in the world. This is a destination for foodies who want to get close to the source and travel far from the rest of the world.

Address: King Island Tasmania
 Internet: www.discovertasmania.com.au

The Tarkine Drive



The Tarkine Drive in Tasmania's North West is easily accessible for anyone wanting to get back in touch with nature and experience the

wilderness. The loop takes travellers through natural and dramatic landscapes surrounded by rainforest and tall eucalypts with impressive widespread views over rivers and beyond. Completing the loop is the Trowutta Arch Rain Forest Walk - a stunning and natural geological structure.

Address: Stanley Tasmania
 Internet: www.discovertasmania.com.au

Queenstown



Queenstown is the gateway to the West Coast with a rich and rugged mining history. It's also close to the edge of Tasmania's World

Heritage Wilderness Area and surrounded by great fishing lakes. The town was once the world's richest mining town. The copper mining and mass logging in the early 1900s created a surreal and rocky 'moonscape' of bare coloured conglomerate. Although Mother Nature is slowly creeping back into the landscape, the scenic drive into Queenstown down a spiralling road with over 90 bends is still nothing short of spectacular.

Address: Queenstown Tasmania
 Internet: www.discovertasmania.com.au

EAST COAST



Along the East Coast you can dine on plump oysters and other fresh seafood, sip wine with the winemaker at one of the wineries along the coast, kayak with dolphins or take the ferry to Maria Island - a wildlife haven set amongst natural beauty and convict history.

Bay of Fires

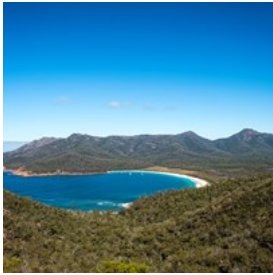


The Bay of Fires is a Tassie favourite. Here a ribbon of coves, rocky outcrops and empty beaches flow under azure skies. The Bay of Fires

Conservation Area has clean white beaches, blue water and granite boulders splashed with bright orange lichen. Beach activities and bird-watching are popular and you may see a pod of dolphins cruise parallel to the beach. The area is known for its snorkelling and diving, with scenic reefs, corals, underwater caves and abundant sea life.

Address: Bay of Fires Tasmania
 Internet: www.discovertasmania.com.au

Wineglass Bay



Heard of this one? It's graced the cover of many a glossy brochure for good reason - it's simply spectacular. Think sapphire sea lapping a curve of perfect white sand; the type of beach normally reserved for romantic movie scenes. But at our Wineglass Bay, anyone can wander this picture-perfect setting. Feeling energetic? Climb The Hazards to look out over Wineglass Bay, or paddle under the pink mountains in a kayak. If this all sounds too exhausting, blame the laid back coastal lifestyle and hop on a scenic flight - by far the best way to see Wineglass Bay's faultless half-moon curve. You can also book a four-day Wineglass Bay Sail Walk journey and you can drop anchor in the bay and call it your own for the evening.

Address: Wineglass Bay Tasmania

Internet: www.discovertasmania.com.au

Great Eastern Drive



The Great Eastern Drive - it's a place of stomach filling soul food and jaw-dropping vistas. Pristine water, rich soil and a mild climate make for a killer oyster and wine road trip. Add ocean-going adventures and friendly locals and you have all the ingredients for the perfect coastal break.

Between Orford and the Bay of Fires - you'll find picture blinding white beaches, azure water and bright orange boulders. See Tassie's East Coast with your own eyes and it will stay with you forever. Lace up and walk off plump oysters

along sandy stretches of shell-strewn beaches. Stop, take your time - the Great Eastern Drive promises a winding coastal sojourn along a blindingly beautiful coastline and ridiculous beaches, topped off with a gentle coastal breeze.

Address: Orford - Bay of Fires Tasmania

Internet: www.discovertasmania.com.au

Freycinet National Park



When you first set eyes on Great Oyster Bay set against the backdrop of Freycinet National Park and the three pink-granite peaks of the Hazards mountain range - you know you're somewhere different (and special). Located on Tasmania's beautiful East Coast, the Freycinet National Park occupies most of the Freycinet Peninsula. The 10,000 ha park is loaded with natural assets, including the granite peaks of the Hazards that dominate the Peninsula and the iconic and much-photographed Wineglass Bay. It is also a wildlife haven to Tasmanian pademelons, white-breasted sea eagles, and red-necked wallabies. There are long and short walks across the park to secluded bays, clean beaches and bird-filled lagoons.

Address: Freycinet Peninsula

Internet: www.discovertasmania.com.au

Maria Island



tell.

Maria Island is a natural wildlife sanctuary and off-shore retreat with historic ruins, sweeping bays, dramatic cliffs and plenty of stories to

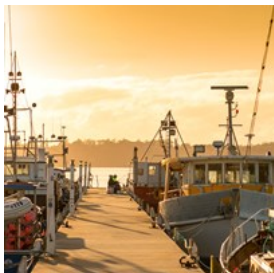
Located off Tasmania's East Coast and accessible only by ferry, Maria Island contains the most intact example of a convict probation station in Australia. Here visitors can piece together Tasmania's intriguing convict history, encounter very cute wildlife and explore Maria Island's pristine beaches and ancient forests.

The island offers excellent walking and cycling journeys and a limestone quarry at the Fossil Cliffs provides a fascinating close-up look at the many ancient creatures immortalised as fossils in the rocks. The Painted Cliffs at Hopground Beach are beautifully patterned sandstone shaped by the mineral-rich water and wind.

Address: Maria Island Tasmania

Internet: www.discovertasmania.com.au

St Helens



St Helens is the largest town on Tasmania's North-East Coast and just a few kilometres away from Binalong Bay and the southern end of the beautiful beaches of the Bay of Fires.

Overlooking Georges Bay, chartered fishing boats cruise offshore for marlin and divers cruise beneath the surface to explore impressive kelp forests, underwater caves and colourful sea life.

St Helens offers all the services of a busy town with a positively laid back vibe, and that's just the way the locals and visitors like it. There's no shortage of eateries and shops to hang out in and people watching is a favourite local pastime.

Address: St Helens Tasmania

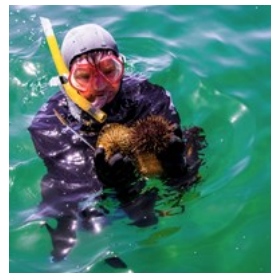
Internet: www.discovertasmania.com.au

FOOD EXPERIENCES



In Tasmania you won't just taste the food, you'll meet food thought leaders and chefs leading a cultural food revolution. There are farmers markets, cutting edge restaurants, gourmet walking tours, farm gates and providores scattered all across the island.

Seafood Seduction



Cruise the Derwent River to the waters surrounding Bruny Island - here your guide gathers oysters, mussels, sea urchin and abalone straight from the sea. Anchored in sheltered waters help prepare a seafood bounty on board.

Address: Hobart Tasmania

Phone: +61 3 6234 4270

Internet: www.seafoodseduction.com.au

Bangor Vineyard Shed



Stop at Bangor Vineyard Shed along the road to and from Port Arthur and indulge in oysters plucked from the waters before you and wine from vines growing just beyond the deck. Bangor is the cellar door for Bangor wines and the farm gate shop for Lease 170's oysters.

Address: 20 Blackman Bay Road Dunalley Tasmania
 Phone: +61 3 62 535 558
 Internet: www.bangorshed.com.au
 Email: info@bangorshed.com.au

Ashgrove Cheese



Visit Ashgrove Farm Cheese, taste their award-winning fresh bottled milk, cream, butter and uniquely flavoured cheeses. Take a peek through the viewing window to the factory where the Bennett's traditional cheese making processes still churn out their prize produce.

Address: 6173 Bass Hwy, Elizabeth Town
 Phone: +61 3 6368 1105
 Internet: www.ashgrovecheese.com.au
 Email: info@ashgrovecheese.com.au

Agrarian Kitchen



Pick your produce straight from the garden and rediscover the simple pleasures of preparing and eating freshly harvested ingredients at one of Tasmania's boutique cooking schools.

Address: 650 Lachlan Road Lachlan Tasmania
 Phone: +61 3 6261 1099
 Internet: www.theagrariankitchen.com
 Email: info@theagrariankitchen.com

Freycinet Marine Farm



Nothing captures a sense of place more honestly than an oyster, and these oysters pulled from the nearby lagoon are just about as salty as they get

- it's the farm's signature flavour.

Address: 1784 Coles bay Road, Coles Bay
 Phone: +61 3 6257 0140
 Internet: www.freycinetmarinefarm.com
 Email: oysters@freycinetmarinefarm.com

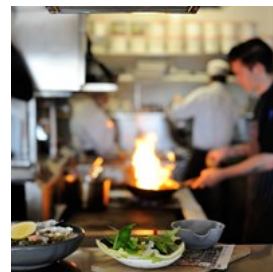
Hobart Dining



New restaurants and watering holes are popping up all over the city. Aloft and The Glass House bring a new sophistication to the waterfront. Then there's Frank, Etties, Landscapes, Templo, Franklin, the list goes on. Plus there's whisky bars, gourmet tours and cooking schools to tempt your taste buds.

Internet: <http://www.discovertasmania.com.au/what-to-do/food-and-drink>

Launceston Dining



Eat your way through Launceston and experience perfect examples of paddock-to-plate dining. Geronimo Apertivo Bar and Restaurant is a moody den bursting with regional seasonal produce, most of which is sourced from owner-manager Jeremy Kode's farm. Dine in an old timber flour mill with extraordinary views of the serene Tamar River at Stillwater. Mud Bar and Restaurant focuses on Asian flavours. Hallams dishes up sustainable line caught fresh seafood. Try the upmarket steakhouse, Black Cow Bistro, with a menu showcasing Tasmanian steak.

Internet: www.discovertasmania.com.au

Kate's Berry Farm



In Swansea at Kate's Berry Farm, crispy hot waffles and a compote of poached berries go nicely with views across Great Oyster Bay. Acclaimed for

her truly outstanding cool climate berries, Kate offers a unique range of mouth watering quality produce and products that highlight what Tasmania does so well.

Address: 12 Addison Street Swansea Tasmania

Phone: + 61 3 62578 428

Internet: www.katesberryfarm.com

Cradle to Coast Tasting Trail



Let your tastebuds follow the Cradle to Coast Tasting Trail to growers, farm gates and cellar doors on a journey of gastronomic proportions.

The trail is designed to help you discover the best artisanal producers this special region of Tasmania has to offer.

Address: North West Tasmania

Internet: <http://www.discovertasmania.com.au/about/articles/cradle-to-coast-tasting-trail>

Gourmania



Join Gourmania Food Tours to taste fresh seafood, nibble cheeses and sip wine. With a local at your side, weave your way through Hobart's

streets and laneways and learn the city's history and fine food secrets – straight from the edgy foodies shaping the Tasmanian food experience.

Address: Hobart Tasmania

Phone: +61 419 180 113

Internet: www.gourmaniafoodtours.com.au

Red Feather Inn Cooking School



The Red Feather Cooking School provides a wealth of culinary knowledge.

Learn the culinary tricks of the trade with like-minded foodies using

locally sourced ingredients and you'll soon be as passionate about Tasmanian produce as they are.

Together with the Red Feather Inn luxury accommodation, this cooking school is an experience to savour.

Address: 42 Main Street Hadspen Tasmania

Phone: +61 3 6393 6506

Internet: www.redfeatherinn.com.au

Grandveve Sheep Cheesery and Hartshorn Distillery



Every day, at any time, you can step behind the scenes to become part of a working cheesery. At Grandveve, the affinage experience will have you

turning, rubbing down, hooping and salting cheese by hand with the head cheesemaker.

After honing your newly developed cheese-crafting skills, sit back with the cheese master once more, this time over a tasting. Post tasting, build a cheese platter and take your seat on the balcony overlooking the paddock, the D'Entrecasteaux Channel and bleating sheep – oblivious to the gastronomic delights they have delivered before you. Wash it down with local ginger beer or smooth vodka with little heat but loads of character. The onsite Hartshorn Distillery, produces small-batch 'sheep's whey' vodka. Each bottle hand-sprayed black,

hand-written and signed by Ryan Hartshorn himself.

Address: 59 Devlyns Road Birchs Bay Tasmania

Internet: www.grandvewe.com.au

Email: info@grandvewe.com

DRINK EXPERIENCES



There's good reason Tasmania's wine, cider, beer and spirits are highly sought after. The island's moderate climate provides the perfect ingredients for winemaking, brewing and distilling.

The Tasmanian Cider Trail



Curious about the Apple Isle's rosy reds transformation into moreish cider? It's the characters behind the brew that makes

Tasmanian cider special.

Address: Tasmania Australia

Internet: <http://www.tascidertrail.com>

The Tasmanian Whisky Trail



In one of the few places in the world where whisky is still made the old-fashioned way, it's the people that make Tasmanian whisky

special. Pure water running off mountains is ideal for producing fine whisky. Just like in the 1830s, Tasmanian whisky is handcrafted slowly in copper stills, matured in small barrels and hand bottled by whisky lovers, for whisky lovers, worldwide.

Address: Derwent Valley Tasmania

Internet: <http://taswhiskytrail.com>

The Tasmanian Beer Trail



Discover the charming characters and captivating stories behind Tasmania's craft beers on the Tasmanian Beer Trail. Local brewers are always on the lookout for interesting ingredients, resulting in some pretty wild and unusual ales.

Internet: <http://tasbeertrail.com>

North West Wine Trail



Some of Tasmania's prettiest towns sit on this coastal edge, and so do a bumper crop of wineries. Sample and purchase direct from the producer at the North West vineyards.

Internet: www.discovertasmania.com.au

Southern Wine Trail



Vineyards are closer to Hobart than any other capital city, including the Derwent Valley, Coal River Valley and the Huon and Channel wine growing areas.

Address: Hobart Tasmania
 Internet: www.winetasmania.com.au

East Coast Wine Trail



Tasmania's East Coast is picture-perfect. White sand beaches and open blue horizons. But it's also a gourmet food bowl bursting with the best local fare matched with wines produced from the East Coast Wine Route's boutique vineyards.

Address: East Coast Tasmania
 Internet: www.discovertasmania.com.au

Tamar Valley Wine Route



There's more than 30 wineries dotted around the Tamar Valley, from Pipers River to Relbia.

Address: Tamar Valley Tasmania
 Internet: <http://www.winetasmania.com.au>

MAKERS AND MARKETS



Mixed markets in villages and towns are bringing communities together to celebrate eating and making local. Makers, crafters and bric-a-brac-ers come together with bakers, dairy producers, pig farmers and orchardists to offer a

snap shot of the regions' creative diversity. Join in the tradition of sampling produce, accumulating good nosh and listening to buskers laid-back weekend vibes.

Launceston Harvest Market



Launceston's community driven Harvest Market transforms an inner city car park into a foodie nirvana. Meet farmers as you forage for veggies, artisan bread, hormone-free meat, and organic dairy.

Address: 71 Cimitiere Street, Launceston
 Opening hours: Every Saturday 8.30am - 12.30pm
 Internet: www.discovertasmania.com.au

Salamanca Market



You'll need a few hours to explore the 300 stalls when you can meet the makers and soak up the rich sights, sounds and colour of one of Australia's best outdoor markets.

Address: Salamanca Place, Hobart Tasmania
 Opening hours: Every Saturday 8.30am to 3.00pm
 Internet: www.discovertasmania.com.au

Hobart Farm Gate Market



The ring of a farm bell signals the opening of the Hobart Farm Gate Market in Hobart. Everything is fresh, local and seasonal and only the people that grow, raise or produce the goods trade there.

Address: Bathurst St (between Murray & Elizabeth

Streets) Hobart Tasmania

Opening hours: Every Sunday 8.30am - 1.00pm

Internet: www.discovertasmania.com.au

Burnie Makers Workshop



Makers' Workshop celebrates Burnie's makers, innovators and artists. Well known for supporting local artisans, studios are provided for a

variety of local craftspeople and artists who demonstrate their skills and techniques on-site. The story of Burnie's deep connection with paper is told here with Creative Paper, where visitors are invited to see paper being made by hand, then try it for themselves. The Cheese Shop offers exquisite cheeses for tastings. A fascinating range of exhibitions can also be viewed in the contemporary gallery space. Significant objects from the Burnie Regional Museum are on display throughout the building as visual 'icons' telling stories of Burnie.

Address: 2 Bass Highway, Parklands, Burnie, Tasmania

Phone: +61 3 64 305 831

Internet: www.discoverburnie.net

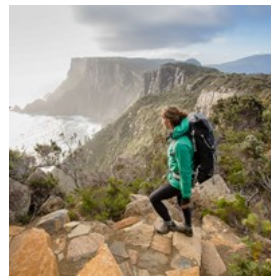
Email: makersworkshop@burnie.net

WALKING



The island's wilderness, beaches, and wildlife can all be experienced on luxurious guided walks hand in hand with cosy cabins, gourmet food and a glass of pinot.

Three Capes Track



Few places on Earth remain that feel so remote, so raw, so removed from the ordinary. This cliff top walk atop Australia's

highest sea cliffs in the Tasman National Park on the Three Capes Track will refresh your senses. Three Capes is a self-guided walk with three cabin sites providing maximum comfort with minimal impact on the environment. Pellet heaters also keep walkers comfortable year-round.

Address: Port Arthur Tasmania

Internet: www.greatwalkstasmania.com

The Tarkine Rainforest Walk



Enter the Tarkine, the largest tract of temperate rainforest in the Southern Hemisphere. Explore with little more than a day pack as you discover the

wilderness and dine on fresh produce. Freshen

up in a Japanese-style washroom, dine among the ferns and settle next to a fire.

Address: The Tarkine Rainforest

Internet: www.greatwalkstasmania.com

Bay of Fires Lodge Walk

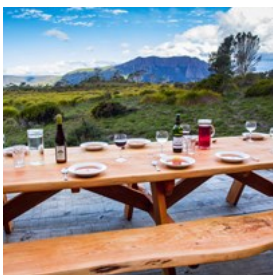


The Bay of Fires Walk covers a coastline where there are more extraordinary white sandy beaches than houses. Immerse yourself in the pristine coastal environment teeming with wildlife. Accommodation is uncomplicated and luxurious of either the beach camp or exclusive Bay of Fires Lodge, an airy seaside cliff top lodge overlooking the azure ocean and blazing orange boulders. Walk through the bush to the spa, beginning your spa experience with a soothing soak in the outdoor bathing pavilion.

Address: Bay of Fires Tasmania

Internet: www.greatwalkstasmania.com

Cradle Mountain Huts Walk



The Cradle Mountain Huts guided walk is a great opportunity to discover the dramatic landscapes and extraordinary diversity of the Cradle Mountain & Lake St. Clair National Park within Tasmania's World Heritage Area. Following the iconic Overland Track, the walk extends from Cradle Valley to Lake St Clair through a variety of spectacular landscapes. In the evening, relax in the comfort of private huts, enjoy hot showers and three-course meals.

Address: Cradle Mountain Tasmania

Internet: www.greatwalkstasmania.com

The Freycinet Experience Walk

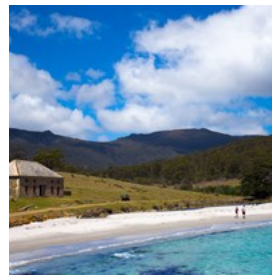


Leave everyday life behind for the Freycinet National Park. Each day a new adventure unfolds as you access the most isolated corners of the park. Snorkel clear waters, walk to magnificent views and walk the powder white sand of Wineglass Bay under the Hazards mountain range. At night enjoy hot showers, deep baths and wine by the log fire. Peruse the lodge's library, watch wildlife and enjoy indulgent meals prepared by your hosts.

Address: Freycinet National Park Tasmania

Internet: www.greatwalkstasmania.com

The Maria Island Walk



Explore the breathtaking beauty of Maria Island National Park. If you think the walk will be all about nature because you're in a national park, think again - the convict station at Darlington pre-dated Port Arthur. Enjoy candlelit gourmet meals, prepared by guides, wines from local vineyards, and beers from Tassie breweries.

Address: Maria Island Tasmania

Internet: www.greatwalkstasmania.com

60 Great Short Walks



Tasmania is home to some of Australia's most iconic walks - the Bay of Fires, Maria Island and of course the Overland Track, to name a few. But one doesn't have to embark on a multi-day trek to experience the best of Tassie on foot. Work

your way down the list of Tasmania's 60 Great Short Walks. They give just about anybody the chance to explore some of Tassie's most scenic and iconic regions, in walks ranging from about 20 minutes to a couple of hours.

Address: Tasmania

Internet: www.greatwalkstasmania.com

WHERE TO STAY



Where you rest your head plays a big part in any holiday. It's your base from which to explore. Whether you want five-star luxury or a budget hotel, Tasmania has accommodation to cater to every traveller.

Resorts and Lodges



Tasmania's resorts and lodges are intimate, exclusive and located right on the edge of national parks or perched high on a cliff top

overlooking the ocean. Expect everything from personalised walking tours to wellbeing treatments and fresh food and wine.

Address: Tasmania

Internet: www.discovertasmania.com.au

Backpackers and Hostels



Backpackers flock to Tasmania for great outdoor holiday experiences, with budget and boutique budget accommodation easy to

find.

Address: Tasmania

Internet: www.discovertasmania.com.au

Apartments



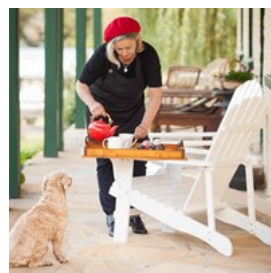
Choose from inner-city apartments or self-contained villas in historic and beachside towns, then settle in and enjoy the comforts of a

hotel and home, all rolled into one.

Address: Tasmania

Internet: www.discovertasmania.com.au

Bed and Breakfast



Tasmania's B&B owners take pride in offering a genuine experience and an historic B&B is a great way to experience Tasmania's rich colonial

past.

Address: Tasmania

Internet: www.discovertasmania.com.au

Holiday Houses and Cabins



Enjoy the space and comfort that only a house can provide, with rooms for guests and cooking facilities for dinner parties and festive occasions.

Address: Tasmania

Internet: www.discovertasmania.com.au

Hotels and Motels



In Tasmania hotels and motels are far from what you might expect. You'll find everything from award-winning colonial mansions and coastal

retreats to the contemporary elegance of a city waterfront hotel.

Address: Tasmania

Internet: www.discovertasmania.com.au

Caravan and camping



Tasmania is one of the easiest and most unspoiled places to explore in a campervan, motorhome or caravan.

There are more than 50 caravan parks around the state, and cabin-style accommodation for those looking for an economical 'night away' from the confines of your vehicle. Campsites can be found in most parks and reserves, providing a true wilderness experience on or off the beaten track.

Address: Tasmania

Internet: www.discovertasmania.com.au

EVENTS



From cutting edge cultural festivals and world-class sporting events to country fairs and farmers markets, there's always something on in Tasmania. Find fresh food and a fresh perspective at festivals and events across the island.

Summer Events



From December to February summer is the season of festivals and coastal escapes. The days are long and the weather is warm. There's super

yachts coming in, polo, long table feasting, foraging, mountain biking and more. This summer is shaping up to be a cracker here in Tasmania.

Address: Tasmania

Internet: www.discovertasmania.com.au

Autumn Events



From March to May, autumn is time for touring, walking, autumn colours and waking early for farmers markets to pick out local, seasonal

produce. For the perfect mix this season, throw together some sword swallowers, winemakers,

sheep dogs and supercars. Welcome to autumn in Tasmania!

Address: Tasmania

Internet: www.discovertasmania.com.au

Winter Events



From June to August our winter days are bright, clear and crisp. It's the season for alpine walks, hot tubs and evenings spent by a log fire with a glass of pinot. From the dark arts and ravenous feasts to wild music festivals and exhibitions inspired by uncharted lands. Prepare to have your imagination pushed to its limit and bring a healthy appetite... for everything.

Address: Tasmania

Internet: www.discovertasmania.com.au

Spring Events



From September to November, spring brings longer, warmer days and cool nights. It's the season of blooms in historic estate grounds, and triggers an explosion of trout in the highlands.

Address: Tasmania

Internet: www.discovertasmania.com.au

ESSENTIAL INFORMATION



Tasmania is a place of wild landscapes, friendly people, wonderful food and wine, and a haunting history. It's also Australia's smallest state and the most geographically diverse with over 40 per cent reserved as national parks and world heritage wilderness. Australia's only island state, access to Tasmania is by air and sea only.

Airports



There are more direct flights departing major cities today than ever before. Regular flights depart from Melbourne, Sydney and Brisbane and

fly direct to Hobart and Launceston. Direct flights are also available from Melbourne to Wynyard (Burnie), Devonport, King and Flinders Island. Shuttle buses operate out of all Tasmanian airports.

Photo: Juan Garces

Getting Around



With good roads, few freeways or motorways and scenic views wherever you go, getting around Tasmania is part of the fun. Although Tasmania is a small state by Australian

standards, it's actually the same size as Ireland, so don't underestimate the time it takes to get around. There are no train services in Tasmania so travellers rely on bus and coach and of course car-hire to get to and from our cities and regional centres. Coach tours offer a relaxing way of seeing the state. Specialised small escorted group touring is also available to cater for particular interests and the youth touring market.

Spirit of Tasmania

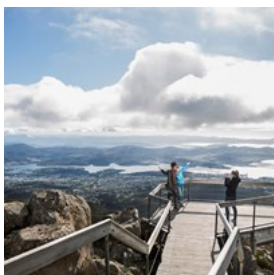


Crossing Bass Strait to Tasmania is easy. Wind back to island time early, travelling by sea on the passenger ship, Spirit of Tasmania. Departing from Melbourne and arriving in Devonport, this has the added benefit of letting you bring your own car and make the most of Tasmania's touring potential. Load your car up with luggage, golf clubs, fishing rods, camping equipment, and bikes - your epic island road trip begins as soon as you drive off the ship.

Phone: +61 3 6419 9320 (International)
More info: www.spiritoftasmania.com.au

Phone: +61 3 6419 9320 (International)
Internet: www.spiritoftasmania.com.au

Climate and Weather

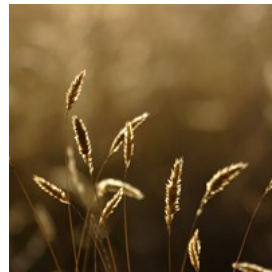


Tasmania has four distinct seasons with the warmest months being December to March.

Regardless of where you travel in Tasmania you should be prepared for sudden, temporary

deterioration in the weather, especially if bushwalking. Always carry additional warm clothing, including a waterproof outer layer.

Quarantine Requirements



Tasmania has some of the world's most stringent quarantine regulations. Please help us retain Tasmania's disease-free status by ensuring that

when you visit you are not carrying or importing any restricted items. The introduction of a pest or disease into Tasmania could have a significant negative impact on our natural environment. A pest or disease finding its way into our world-renowned primary production areas could result in the need to implement expensive control measures, together with a significant loss of markets, and potential cost to primary industries and our community.

Population

In December 2012, Tasmania's population was approximately 512,400.

Currency

Australian Dollar (AUD)

Opening hours

Most businesses open 9am-5pm, check ahead when travelling regionally.

Internet

www.discovertasmania.com.au

Newspapers

The Mercury Tasmania (Hobart and Tasmania)
Sunday Tasmania (Tasmania)
The Advocate (North West)
The Examiner (North)

Emergency numbers

Emergency (police, ambulance, fire brigade) dial 000

Tourist information

<http://www.discovertasmania.com.au/travel-information/visitor-information-centres>