



Wollongong

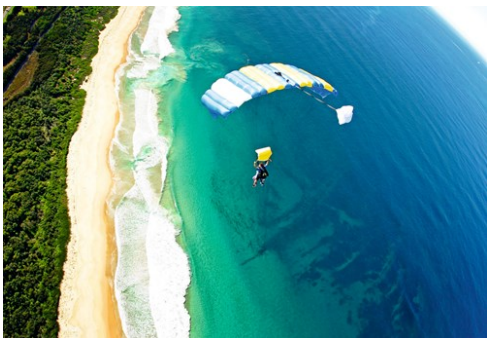
in collaboration with Destination NSW for Wollongong

Photo:



Merlin Entertainment Group

The spectacular escarpment and beautiful beaches make Wollongong idyllic for outdoor adventures and fun. Just 80 km south of Sydney, Wollongong is NSW's third-largest city. Skydive, hang-glide and paraglide above the sparkling Pacific Ocean. Surfing, water skiing, sailing and fishing are popular, too. Play golf on picturesque courses or relax on a beach. Rent a bike and ride along 60 km of cycle paths or walk on rainforest trails. After all the outdoor activities, visit the city's splendid art gallery and enjoy quality cafés and restaurants.




Go where no one has
VENTURED BEFORE!


5 Off the Beaten Track
Destinations in Asia

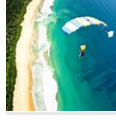
ArrivalGuides

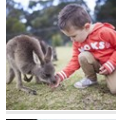
Foto: WhitefoxChen / Shutterstock


Top 5

- 

Beautiful Beaches
Experience Wollongong's gorgeous beaches along a splendid stretch of coast. ...
- 

Sea Cliff Bridge
A marvel of engineering, the Sea Cliff Bridge is a highlight along the magni...
- 

Skydive the Beach
For an unforgettable experience, skydive above the beach and ocean in Wollon...
- 

Symbio Wildlife Park
Symbio Wildlife Park, near the start of the Grand Pacific Drive, is home to ...
- 

Just Cruisin' Motorcycle Tours
Cruise through Wollongong and its surrounds on a chauffeured trike, sidecar ...



TOP 5



Discover the unspoilt natural beauty of Wollongong by relaxing on the fine white sands of its beaches, enjoying spectacular panoramic views by driving on coastal roads, or from the air by skydiving and hang-gliding. And meet native animals including koalas, kangaroos, dingoes and water dragons in an enthralling wildlife park.

Beautiful Beaches



Experience Wollongong's gorgeous beaches along a splendid stretch of coast. From Stanwell Park in the north to Windang in the south, the

Wollongong area is blessed with many beaches. Coalcliff Beach attracts families to its rock pool, uncrowded Coledale has a relaxed vibe and Austinmer is longtime favourite because of its rock pools and ocean baths. The most popular beaches are North Wollongong Beach and Wollongong City Beach. Both have great waves as well as wading pools, cycle paths, barbecues and parks offering respite from the Sun.

Photo: Destination Wollongong

Internet: www.visitnsw.com/destinations/south-coast/wollongong-and-surrounds/beaches

Sea Cliff Bridge



A marvel of engineering, the Sea Cliff Bridge is a highlight along the magnificent coastal road of the Grand Pacific Drive, one of Australia's great touring routes. Visitors can stop here to break up their road journey, stretch their legs and take in majestic panoramic views across the Pacific Ocean. It's also a great viewing platform for migrating whales heading north and south during the migrating season between June and November.

Photo: Sea Cliff Bridge

Address: Lawrence Hargrave Drive, Coalcliff, NSW 2508

Internet: www.visitnsw.com/destinations/south-coast/wollongong-and-surrounds/stanwell-park/attractions/sea-cliff-bridge

Skydive the Beach



For an unforgettable experience, skydive above the beach and ocean in Wollongong. Securely attached to your experienced tandem instructor, you'll be guided through the entire skydive. Your adventure begins with a safety briefing followed by a scenic plane ride. As the excitement builds, your instructor will prepare you for the countdown and together you'll make the jump from more than 4 km above the beautiful coast. After you freefall at more than 200 km/h for a minute, your instructor will pull the chute and you'll soar serenely for 5-7 minutes before landing.

Photo: Skydive Sydney - Wollongong

Address: Stuart Park, North Wollongong, NSW 2500

Phone: +61 2 4225 8444 or 1300 663 634 (within Australia)

Internet: <http://www.visitnsw.com/things-to-do/tours/skydive-sydney-wollongong>

Symbio Wildlife Park



Symbio Wildlife Park, near the start of the Grand Pacific Drive, is home to hundreds of creatures and offers daily animal shows and

enthraling wildlife experiences. Reserve an animal encounter to pat a koala, feed a meerkat and join keepers and dingoes on their daily walk around the park. You can also see water dragons, Tasmanian devils, kangaroos and echidnas, among the many other native animals in the sanctuary. An impressive collection of reptiles – big and small – slither and crawl, and you can enjoy a daily reptile show.

Photo: Kevin Fallon - Symbio Wildlife Park

Address: 7 - 11 Lawrence Hargrave Drive, Helensburgh, NSW 2508

Phone: +61 2 4294 1244

Internet: www.visitnsw.com/destinations/south-coast/wollongong-and-surrounds/stanwell-park/attractions/symbio-wildlife-park

Just Cruisin' Motorcycle Tours



Cruise through Wollongong and its surrounds on a chauffeured trike, sidecar or solo motorcycle. Just Cruisin' tours specialise

in showcasing Wollongong's beautiful coastline including the Sea Cliff Bridge and the Grand Pacific Drive. Enjoy a sensory experience: feel the wind in your face, smell the sea breeze, hear the motor, and take in the spectacular natural scenery all around you.

Photo: Destination Wollongong

Address: Stanwell Tops, NSW 2508

Phone: +61 2 4294 2598

Internet:

www.visitnsw.com/things-to-do/tours/just-cruisin-harley-tours

THE CITY



Wollongong is a delightful drive south of Sydney. You can drive to the city in an hour or take a little longer and follow the winding Grand Pacific Drive around the iconic Sea Cliff Bridge. With superb beaches, accommodation options and al fresco dining by the beach, Wollongong is a great base for exploring the NSW South Coast.

Take in the stunning panorama of the escarpment and coast from Bald Hill Lookout at Stanwell Tops, a popular place for hang-gliding. Cycleways line the coast, so rent a bike and explore Wollongong under brilliant blue skies, or explore the bush on walking trails.

Walk in the forest canopy at Illawarra Fly Treetop Adventures in the escarpment and meet native animals at Symbio Wildlife Park. Thrill-seekers can skydive, hang-glide or paraglide, and take a joyride on a motorcycle into the fragrant bushland and along the sparkling coast.

Stop at lovely Nan Tien Buddhist Temple with its pretty gardens to restore your inner peace. And don't miss Wollongong City Gallery's fascinating exhibition of Aboriginal and Torres Strait Islander art.

DO AND SEE



Anson Smart

A holiday or a weekend escape in Wollongong offers beautiful natural scenery, exciting sports and adventure activities, plus world-class cultural attractions and events.

Aerial Adventures



Enjoy a bird's-eye view of the beautiful coast on an exhilarating aerial adventure. Wollongong is renowned for thrilling air adventures including skydiving, hang-gliding and paragliding. Steep cliffs rising sharply from the coast combined with strong air currents make it a popular destination for hang-gliding and paragliding - Bald Hill Lookout at Stanwell Tops is an acclaimed international site. Soar above cliffs and ocean as you tandem glide before landing on Stanwell Park Beach.

Photo: Sydney Hang Gliding Centre

Internet: www.visitnsw.com/destinations/south-coast/wollongong-and-surrounds/adventure

Australian Motorlife Museum



The Australian Motorlife Museum is dedicated to providing visitors with an insight into the history of motoring through its showcase of historic vehicles and memorabilia. The museum is home of the Paul Butler Collection which includes more than a dozen motor vehicles built before 1930.

Photo: The Australian Motorlife Museum

Address: Intergral Energy Recreation Park, Kembla Grange, NSW 2526

Phone: +61 2 4261 4100

Internet: www.visitnsw.com/destinations/south-coast/wollongong-and-surrounds/wollongong/attractions/australian-motorlife-museum

Bald Hill Lookout



Bald Hill in Stanwell Park is one of Australia's most popular lookouts, offering spectacular and sweeping views of the iconic Sea Cliff Bridge, splendid coastline and vast Pacific Ocean. The area is internationally acclaimed for hang-gliding and paragliding. It was in Stanwell Park that Lawrence Hargrave, an Australian pioneer of flight, experimented with box kites and made a successful flight on 12 November, 1894.

Photo: Bald Hill Lookout

Address: Lawrence Hargrave Drive, Otford, NSW 2508

Phone: 1800 240 737 (within Australia)

Internet: <https://www.visitnsw.com/destinations/south-coast/wollongong-and-surrounds/stanwell-park/attractions/bald-hill-lookout>

Grand Pacific Drive



Explore Wollongong and beyond on a leisurely drive on one of Australia's spectacular touring routes. The Grand Pacific Drive begins just south of

Sydney at the Royal National Park, among the oldest national parks in the world, and travels through temperate rainforest to Stanwell Tops, then down to the famous Sea Cliff Bridge and along the coastline to Wollongong, Shellharbour, Kiama and Berry.

Photo: Tourism Wollongong

Internet: www.visitnsw.com/things-to-do/drives-and-road-trips/grand-pacific-drive

Illawarra Fly Treetop Adventures



Enjoy one of Australia's best treetop experiences and soar on the highest zip-line in the country.

High above the rainforest, the treetop

walk features two gently swaying cantilevered arms and a central tower raised nearly 50 metres from the forest floor. Positioned 710 metres above sea level, the magnificent views take in the rainforest floor to the canopy and out to the Pacific Ocean.

Photo: Illawarra Fly Treetop Adventures

Address: 182 Knights Hill Road, Knights Hill, NSW 2577

Phone: +61 2 4885 1010 or 1300 362 881 (within Australia)

Internet: <https://www.visitnsw.com/destinations/south-coast/kiama-area/jamberoo/attractions/illawarra-fly-treetop-adventures>

Jamberoo Action Park



Located just 30 minutes south of Wollongong, this popular water theme park is set among 40 hectares of gardens and parklands. It's the perfect setting to

relax or join the kids on a huge range of water slides and attractions. Home of the Funnel Web, the longest, most exhilarating water thrill ride built in the world, or splash about in Banjo's Billabong, the largest aqua play structure in the Southern Hemisphere. You can also ride rafts along Rapid River and slide down Surf Hill.

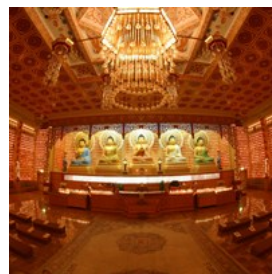
Photo: Wade Stewart, Atmosphere Productions - Jamberoo Action Park

Address: 1215 Jamberoo Road, Jamberoo, NSW 2533

Phone: +61 2 4236 0114

Internet: www.visitnsw.com/destinations/south-coast/kiama-area/jamberoo/attractions/jamberoo-action-park

Nan Tien Temple



Visit or stay at Nan Tien Temple, the largest Buddhist temple in the Southern Hemisphere. Admire the temple's beautiful mix of eastern

and western influences and explore the tranquil gardens and lotus ponds. Nan Tien also offers many spiritual experiences including self-development talks and Buddhist meditation retreats. Pilgrim Lodge is a 100-room facility, which is open all year round and located in the grounds of the Temple.

Photo: Nan Tien Temple

Address: 180 Berkeley Road, Berkeley, NSW 2506

Phone: +61 2 4272 0600

Internet: <https://www.visitnsw.com/destinations/south-coast/wollongong-and-surrounds/wollongong/attractions/nan-tien-temple>

Science Space



Wollongong's most visited indoor attraction, the Science Centre and Planetarium is a major hands-on science venue. Suitable for all ages,

attractions include two floors of exciting interactive exhibits, a science theatre, and the amazing and immersive planetarium.

Photo: Science Space

Address: 60 Squires Way, North Wollongong, NSW 2500

Phone: +61 2 4286 5000

Internet: <https://www.visitnsw.com/destinations/south-coast/wollongong-and-surrounds/wollongong/attractions/science-centre-and-planetarium>

WIN Sports and Entertainment Centres



The WIN Sports and Entertainment Centres are multipurpose venues, hosting various concerts, conventions, exhibitions, and indoor and outdoor

sporting events. Watch A-League football matches and national basketball games, or see international musicians and comedians.

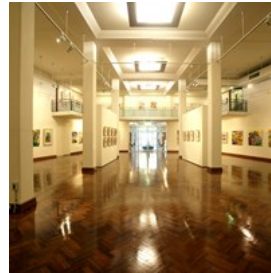
Photo: Lynley Coles

Address: Corner of Crown and Harbour Streets, Wollongong, NSW 2500

Phone: +61 2 4220 2800

Internet: <https://www.visitnsw.com/destinations/south-coast/wollongong-and-surrounds/wollongong/attractions/win-sports-and-entertainment-centres>

Wollongong Art Gallery



A leading regional art gallery with a schedule of high quality exhibitions and public programs. The gallery houses an important collection of

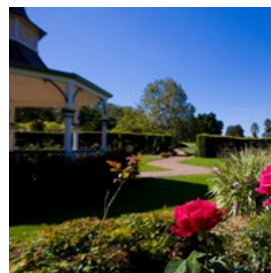
Australian, Aboriginal and Asian art. The permanent collection not only documents regional histories and art practices, but also reflects developments and issues in art of local, national and international relevance.

Address: Corner of Kembla and Burelli Street, Wollongong, NSW 2500

Phone: +61 2 4228 8500

Internet: www.visitnsw.com/destinations/south-coast/wollongong-and-surrounds/wollongong/attractions/wollongong-art-gallery

Wollongong Botanic Garden



Wollongong Botanic Garden is a place of natural beauty where people can relax and learn more about plants and horticulture. The

garden offers an exciting array of activities and experiences for visitors of all ages. These range from guided walks and community workshops that focus on environmental sustainable practices through to band recitals, theatrical entertainment, and sunset cinema screenings.

Address: Murphys Avenue, Gwynneville, NSW 2500

Phone: +61 2 4227 7667

Internet: <https://www.visitnsw.com/destinations/south-coast/wollongong-and-surrounds/wollongong/attractions/wollongong-botanic-garden>

DINING



Altitude 1148

From fine dining at award-winning restaurants to relaxed cafés, enjoy delicious meals overlooking the Pacific Ocean in delightful venues. Talented chefs create mouth-watering dishes using fresh seafood and seasonal produce.

Mount Kembla Village Hotel



Mount Kembla Hotel is a heritage listed building and is the oldest weatherboard hotel in the Illawarra. The scenic views of the surrounding escarpment and award winning restaurant make it a favourite venue for many tourists and artists of the local area.

Mount Kembla Village Hotel specialises in Gastro Pub style cuisine, sourcing only the freshest local produce around.

Offering Mid-week Lunch and Dinner Specials Tuesday to Thursday.

There also is a boutique Australian wine list, with wines from the best growing regions. The hotel provides live music Friday nights as well as every Sunday. With its friendly locals and its comfortable family friendly surrounds your experience is sure to be a pleasurable one.

Photo: Mount Kembla Village Hotel

Address: 274 Cordeaux Road, Mount Kembla, NSW 2526

Phone: +61 2 4271 1119

Internet: <https://www.visitnsw.com/destinations/south-coast/wollongong-and-surrounds/wollongong/food-and-drink/mount-kembla-village-hotel>

Altitude 1148



Altitude 1148 is a chic, contemporary restaurant that serves modern Australian cuisine within the Southern Gateway Centre at Bulli Tops.

Floor-to-ceiling glass doors open onto a balcony affording commanding coastal views of the gorgeous region and Pacific Ocean.

Address: 599 Princes Highway, Bulli Tops, NSW 2516

Phone: +61 2 4267 5443

Internet: <http://www.visitnsw.com/destinations/south-coast/wollongong-and-surrounds/bulli/restaurants/altitude-1148>

Caveau



This multi award-winning restaurant takes its name from La Caveau, a famous literary, wine and gastronomic society formed in France in 1792.

The modern French menu is changed regularly to utilise fresh seasonal ingredients. Seafood is sourced from Sydney's premier supplier. Try the seven-course degustation menu at this fine dining restaurant.

Address: 122-124 Keira Street, Wollongong, NSW 2500

Phone: +61 2 4226 4855

Internet: <http://www.visitnsw.com/destinations/south-coast/wollongong-and-surrounds/wollongong/restaurants/caveau>

Diggies



A local Wollongong institution, Diggies dishes up quality food in a relaxed café setting, with views of the magnificent Pacific Ocean.

Overlooking a thin curl of fine sand on a busy strip of beachfront, you'll find the white facade of Diggies hemmed in by beachgoers.

Address: 1 Cliff Road, Wollongong, NSW 2500

Phone: +61 2 4226 2688

Internet: www.visitnsw.com/destinations/south-coast/wollongong-and-surrounds/wollongong/restaurants/diggies

Harbourfront Restaurant



Harbourfront Restaurant, with its panoramic views of sparkling Belmore Basin, has been serving delicious seafood for more than 30 years.

Enjoy a selection of the finest seafood in an inviting casual atmosphere.

Address: 2 Endeavour Drive, Wollongong, NSW 2500

Phone: +61 2 4227 2999

Internet: www.visitnsw.com/destinations/south-coast/wollongong-and-surrounds/wollongong/restaurants/harbourfront-restaurant-1002358

Lagoon Restaurant



This multi award-winning restaurant was established in 1986. Situated by the sea where Fairy Creek Lagoon meets the Pacific Ocean,

Lagoon Restaurant offers spectacular views at its waterfront location. The restaurant's private dining rooms feature floor to ceiling glass doors that open up onto al fresco terraces.

Address: Stuart Park, North Wollongong, NSW 2520

Phone: +61 2 4226 1677

Internet: www.visitnsw.com/destinations/south-coast/wollongong-and-surrounds/wollongong/restaurants/lagoon-restaurant

Sandygoodwich



Enjoy this café's casual atmosphere while feasting on a great range of breakfast and lunch options with Middle Eastern influence. Book

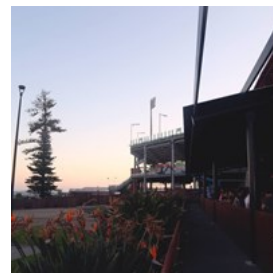
ahead to experience their monthly communal style dinners.

Address: 2/363 Crown Street, Wollongong, NSW 2500

Phone: +61 2 4244 4690

Internet: <http://www.visitnsw.com/destinations/south-coast/wollongong-and-surrounds/wollongong/restaurants/sandygoodwich>

The Illawarra Brewery



Located opposite Wollongong City Beach, The Illawarra Brewery is a bar and grill dedicated to relaxing, drinking, and indulging in modern

Australian cuisine. The brewery offers a large collection of award-winning, handcrafted beers, many made locally in the region.

Address: WIN Entertainment Centre, Corner of Crown and Harbour Streets, Wollongong NSW 2500

Phone: +61 2 4220 2854

Internet: <http://www.visitnsw.com/destinations/south-coast/wollongong-and-surrounds/wollongong/food-and-drink/the-illawarra-brewery>

EVENTS



Tourism Wollongong

Wollongong enjoys an exciting range of events throughout the year. Experience a diverse variety of music in a vibrant community atmosphere, or check out the city's immense range of fitness events. Visit the WIN Sports and Entertainment Centres to see national sporting matches and international performances in a great venue by the Pacific Ocean.

Illawarra Folk Festival



The festival presents around 150 performers over four days featuring some of the best national and international traditional folk acts. Ride the Green Music Train from Sydney to Bulli and enjoy other festival highlights including a two-day intensive folk school and the popular Lunch Italian Style and Tripe Dinner.

Address: Bulli Showground and Racing Complex, Bulli, NSW 2516

Phone: 1300 887 034

Internet: <https://www.visitnsw.com/destinations/south-coast/wollongong-and-surrounds/bulli/events/illawarra-folk-festival>

Thirroul Seaside and Arts Festival



A week-long celebration of the arts and seaside activities that reflect the community's way life. Enjoy art shows and photography exhibitions alongside carnival rides, dancing and live music. Admire the Sculpture on the Shore display along Thirroul Beach and vote for your choice of the best sculpture in the People's Choice Award.

Address: Lawrence Hargrave Drive, Thirroul, NSW 2508

Phone: +61 419 673 071

Internet:

www.visitnsw.com/events/thirroul-seaside-and-arts-festival

TriTheGong Triathlon Festival



The splendid harbour precinct of Wollongong comes alive each March with a festival of fitness, health and family fun that offers the opportunity to participate or enjoy the spectacle of the sport. The festival offers races for a wide range of ages and abilities from a 1 km ocean swim, to the popular beginners Enticer triathlon, through to Olympic distances. Entries are available to individuals or teams.

Address: Wollongong Harbour, Marine Drive, Wollongong, NSW 2500

Phone: +61 2 4423 7775

Internet: www.visitnsw.com/destinations/south-coast/wollongong-and-surrounds/wollongong/events/wollongong-triathlon-festival

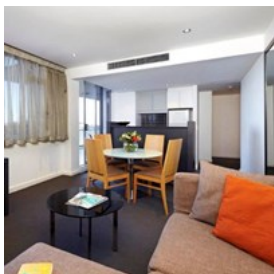
ACCOMMODATION



Chifley Wollongong

Enjoy a great range Wollongong accommodation options. You'll find many places to stay within walking distance of the beach and close to shops, restaurants and other attractions. Choose from a selection of modern self-contained apartments, cosy bed & breakfasts, accessible camping spots, youth hostels, hotels and motels.

Adina Apartment Hotel



The Adina Apartment Hotel is in the heart of Wollongong's city centre, with City Beach, Crown Street Mall, the WIN Entertainment Centre

and a beachside golf course only a stroll away. You'll be perfectly positioned to experience all Wollongong has to offer, whether you're visiting for business or leisure.

Address: 19 Market Street, Wollongong, NSW 2500
Phone: +61 2 4250 5000 or 1300 633 462 (within Australia)
Internet: <https://www.visitnsw.com/destinations/south-coast/wollongong-and-surrounds/wollongong/accommodation/adina-apartment-hotel-wollongong>

Best Western City Sands



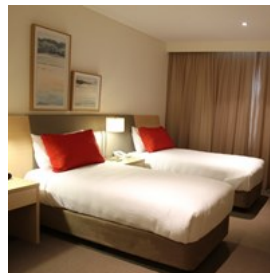
Best Western City Sands offers one or two-bedroom apartment-style accommodation with large private balconies, spacious living areas and spectacular views of the ocean or escarpment. Property features include a beachside 18-hole links-style golf course and Rory's Saltwater Grill, a restaurant.

Address: Corner of Bank and Corrimal Street, Wollongong, NSW 2500

Phone: +61 2 4222 3111

Internet: <https://www.visitnsw.com/destinations/south-coast/wollongong-and-surrounds/wollongong/accommodation/best-western-city-sands>

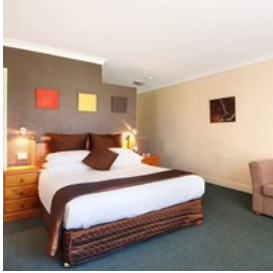
SageHotel Wollongong



Experience and delight in the simplicity of Sage Hotel Wollongong. The hotel is only a short walk to Wollongong City Beach, vibrant restaurants and cafes, and fabulous shopping at Wollongong Central and Crown St Mall, making it perfectly suited for both business and leisure. You can enjoy the relaxed coastal vibe as well as wine and dine in the city centre.

Address: 60 - 62 Harbour Street, Wollongong, NSW 2500
Phone: +61 2 4201 2111 or 1800 303 186 (within Australia)
Internet: www.visitnsw.com/destinations/south-coast/wollongong-and-surrounds/wollongong/accommodation/sage-hotel-wollongong

Comfort Inn Fairways



The Comfort Inn Fairways is ideally positioned adjacent to the Port Kembla Golf Course and conveniently located between Lake Illawarra

and some of the Wollongong region's best beaches. Property facilities include guest barbecue areas, guest laundry, licensed restaurant and bar, two swimming pools and a tennis court.

Address: 24 Golf Place, Primbee, NSW 2502

Phone: +61 2 4274 7274

Internet: www.visitnsw.com/destinations/south-coast/wollongong-and-surrounds/wollongong/accommodation/comfort-inn-fairways

Novotel Wollongong Northbeach



On the water's edge, just footsteps from the fine white sands of North Wollongong Beach, the award-winning Novotel Wollongong Northbeach

offers stunning ocean views and spacious light-filled rooms. The hotel is in Wollongong's scenic Blue Mile precinct, close to restaurants and cafés, local attractions and the city centre.

Address: 2 - 14 Cliff Road, North Wollongong, NSW 2500

Phone: +61 2 4224 3111

Internet: <https://www.visitnsw.com/destinations/south-coast/wollongong-and-surrounds/wollongong/accommodation/novotel-wollongong-northbeach>

Quality Suites Pioneer Sands



Quality Suites Pioneer Sands deluxe serviced one and two-bedroom apartments feature generous open plan living areas which flow to

outdoor entertaining terraces. Many apartments offer gorgeous hinterland or district views. Enjoy access to pool, spa and gym facilities, just five minutes from Wollongong's city centre.

Address: 19 Carters Lane, Wollongong, NSW 2500

Phone: +61 2 4252 1111

Internet: <https://www.visitnsw.com/destinations/south-coast/wollongong-and-surrounds/wollongong/accommodation/quality-suites-pioneer-sands>

ESSENTIAL INFORMATION



Tourism Illawarra

Wollongong and its beautiful beaches are conveniently located 80 km south of Sydney. Travelling to Wollongong is easy by motor vehicle or public transport. With public transport there are many options for exploring the city and surrounding areas.

Airport

Sydney Airport is the closest airport to Wollongong. Connecting links between the airport and Wollongong are provided by rail and road.

By road:

It's an easy hour-long drive to Wollongong. Follow the signs from the airport towards Wollongong and Rockdale to get to the Princes Highway, and from there follow the road and directional signage south to Wollongong.

By Rail:

For a direct link to Wollongong, catch an airport train to Wolli Creek and then change platforms for a train on the South Coast Line to Wollongong. Peak hour trains to Wollongong sometimes skip Wolli Creek, in which case you can change trains at Hurstville for a train to Wollongong. Travel time is less than 2 hours.

Free Gong Shuttle Bus

Wollongong's free Gong Shuttle Bus makes it easy to get around the city.

The service operates in both directions on a loop from Wollongong Station to Wollongong University via Wollongong Hospital, Burelli Street and the Innovation Campus.

On weekdays the shuttle operates every 10 minutes between 7am and 6pm and every 20 minutes from 6pm to 10pm. On weekends the shuttle operates every 20 minutes between 8am and 6pm.

The route numbers for the Gong Shuttle are 55A and 55C.

Internet: www.transportnsw.info/resources/documents/maps/wollongong-shuttle-map.pdf

Public transport

Wollongong Train Station lies in the heart of town on the South Coast Line of the Transport NSW intercity network. Many surrounding beaches are also accessible by train, including

Stanwell Park, Wombarra, Coledale, Austinmer and Thirroul, which all have an hourly service. Travel further south on the train line to discover other beautiful coastal towns such as Shellharbour, Kiama and Gerringong, as well as the hinterland village of Berry.

Internet: www.transportnsw.info

Telephone

Country Code: (+61)

Area Code: (02)

Electricity

220-240V

Population

Approximately 200,000.

Currency

Australian Dollar (AUD) \$1 = 100 cents

Opening hours

General city shopping hours are Monday to Friday 9am - 5.30pm with late night shopping on Thursday until 9pm. Most shops are open Saturday from 9am - 4pm and Sunday 10am - 4pm.

Internet

www.visitnsw.com/destinations/south-coast/wollongong-and-surrounds/wollongong

Newspapers

The Illawarra Mercury (daily)
The Wollongong Advertiser (weekly)
Sydney Morning Herald (NSW)
The Daily Telegraph (NSW)
The Australian (National)

Emergency numbers

Police, Ambulance, Fire 000

Tourist information

Southern Gateway Centre
Address: Princes Motorway, Bulli Tops, NSW 2516
Phone: +61 2 4267 5910. Toll Free: 1800 240 737
Hours: Open daily 9am - 5pm. Closed Christmas Day.
www.visitnsw.com/visitor-information-centres/southern-gateway-centre

iHUB

Address: 93 Crown Street, Wollongong, NSW 2500
Phone: +61 2 4267 5910 Toll Free: 1800 240 737
Open: 7 days a week Mon - Saturday 9am - 5pm, Sunday & Public Holidays 10am - 4pm. Closed Christmas Day, New Years Day and Good Friday.
www.visitnsw.com/visitor-information-centres/wollongong-central-visitor-information-centre