



# Bremen

in collaboration with BTZ Bremer Touristik-Zentrale

Photo: Jonas Ginter / BTZ Bremer Touristik-Zentrale Copyright



Jochen Knobloch / BTZ Bremer Touristik-Zentrale

Bremen is a picturesque city which is happily situated along both sides of the river Weser. With over 1200 years of history to explore, amble through the twisting lanes filled with quaint shops and cafes, making sure to stop at the Dom St Petri and the UNESCO World Heritage listed Rathaus, or Town Hall, hailed as the finest in Europe. The world famous Beck's Beer is brewed here, and guided tours are offered to visitors year round. With so much to do, see, eat and drink, explore this guide to make the most of your trip to Bremen..



Jonas Ginter / BTZ Bremer Touristik-Zentrale



Jonas Ginter / BTZ Bremer Touristik-Zentrale

Go where no one has  
**VENTURED BEFORE!**

**5 Off the Beaten Track**  
Destinations in Asia

**ArrivalGuides**

Foto: WhitefoxChen / Shutterstock

## Top 5



**The Bremen Town Musicians**  
These four fairy tale animals are as much a part of Bremen as the river Wese...



**The Town Hall and Roland s...**  
Visit the 600-year-old town hall, whose Weser Renaissance-style facade was a...



**The Schnoor quarter**  
This pretty little quarter takes its name from the fact that its many old bu...



**Böttcherstrasse**  
As soon as you turn into Böttcherstrasse, just south of the market square, y...



**The Kunsthalle art gallery**  
Bremen's Kunsthalle gallery offers art lovers a truly impressive collection ...



## THE CITY



*Jonas Ginter / BTZ Bremer Touristik-Zentrale*

Whether walking, cycling or using public transport, getting around Bremen is easy. Bremen measures only 10 km by 2 km, and is filled with architectural gems such as the Schnoor-Viertel complete with its' medieval buildings. The Bremer Kunsthalle houses one of Germany's finest art collections.

There are few public parks which have a vibrancy like Bürgerpark, located in the middle of the city. Stop to have a bite to eat at the cafe, play a round of miniature golf or bring a blanket and watch the world pass by.

Sports fans will already be aware that Bremen is the home of Werder Bremen, a German premier league (Bundesliga) team. Stadium tours are offered for those who want to get up close and personal with the home of this famous team.

There are many museums and galleries dotted throughout the city, and a family friendly, interactive science center, Universum Bremen.

There is always something exciting going on in Bremen, Since 1036 during the last two weeks of October, Bremen has hosted Freimarkt, one of the largest fairground festivals in Europe.

With so much to see, eat, do and experience - let

Bremen lead you down its' cobbled streets to an adventure that awaits.

## TOP10



*Hans Joachim-Harbeck / BTZ Bremer Touristik-Zentrale*

What shall I do first!?! If you haven't been to Bremen before, you'll probably find yourself asking this question. Bremen has many attractions to offer its visitors - the Bremen Town Musicians and the UNESCO World Heritage town hall are certainly among the most popular, but Bremen is also a city of science. You can find out how astronauts live in the International Space Station or sit on the earthquake sofa at Universum Bremen. Perhaps you would like to venture into the world of shipbuilding or explore the pretty narrow lanes of the Schnoor quarter? We have put together a list of ten highlights that are not to be missed on a visit to the city.

### The Bremen Town Musicians



These four fairy tale animals are as much a part of Bremen as the river Weser, and you come across them wherever you wander in the old quarter. You can see the famous sculpture outside the town hall, hear the animals' voices coming out of the ground in front of the State Parliament building and visit the

donkey's grave on Böttcherstrasse.

Photo: Torsten Krüger / BTZ Bremer Touristik-Zentrale  
Address: Am Markt 21  
Internet: [www.bremen-tourism.de/bremen-town-musicians-1](http://www.bremen-tourism.de/bremen-town-musicians-1)

### The Town Hall and Roland statue



Visit the 600-year-old town hall, whose Weser Renaissance-style facade was added in later years, and the Roland statue, erected in 1404, are our most precious cultural treasures. However, they are no longer our exclusive property: since 2004 they have been protected by UNESCO as a piece of world heritage for everyone to enjoy.

Photo: Ingrid Krause / BTZ Bremer Touristik-Zentrale  
Address: Am Markt 21  
Internet: [www.bremen-tourism.de/town-hall](http://www.bremen-tourism.de/town-hall)

### The Schnoor quarter



This pretty little quarter takes its name from the fact that its many old buildings line the narrow lanes like pearls on a string (Schnur in German). Nowhere else in Bremen do you find so many restaurants and cafés, arts & crafts boutiques and souvenir shops in such a small area as in the Schnoor - the oldest quarter of the city.

Photo: Studio Banck / BTZ Bremer Touristik-Zentrale  
Internet: [www.bremen-tourism.de/schnoor-quarter-bremen](http://www.bremen-tourism.de/schnoor-quarter-bremen)

### Böttcherstrasse



As soon as you turn into Böttcherstrasse, just south of the market square, you enter a whole world in the Expressionist style. This 110-metre-long architectural tour de force contains restaurants and cafés, handicraft shops, two museums and a carillon consisting of 30 Meissen porcelain bells.

Photo: Jan Rathke / BTZ Bremer Touristik-Zentrale  
Internet: [www.bremen-tourism.de/boettcherstrasse-4](http://www.bremen-tourism.de/boettcherstrasse-4)

### The Kunsthalle art gallery



Bremen's Kunsthalle gallery offers art lovers a truly impressive collection ranging from Old Masters to the latest media art. Its permanent display of prints and drawings is one of the most significant of its kind. The gallery has also consistently earned itself a widespread reputation for its temporary exhibitions.

Photo: Jan Rathke / BTZ Bremer Touristik-Zentrale  
Internet:

[www.bremen-tourism.de/kunsthalle-bremen-art-museum](http://www.bremen-tourism.de/kunsthalle-bremen-art-museum)

### The Schlachte Embankment



Anyone looking for a break from all the highbrow culture should stroll down to the Schlachte promenade along the river Weser. Its numerous pubs and bars - many with outdoor seating areas - make a great place to chill out. An antiques and bric-a-brac market is held here every Saturday during the spring and summer months. In the run-up to Christmas the medieval

atmosphere of the Schlachte-Zauber market gets everyone in the right mood for the festive season.

Photo: Studio Banck / BTZ Bremer Touristik-Zentrale  
Internet:  
[www.bremen-tourism.de/schlachte-embankment-bremen](http://www.bremen-tourism.de/schlachte-embankment-bremen)

### The Maritime Mile in Vegesack



Visitors can explore Bremen's rich seafaring tradition on the Maritime Mile in the district of Vegesack, where Germany's first

man-made harbour was built 400 years ago. The country's last fully-rigged sailing ship still afloat is anchored here, while the historical Spicarium harbour warehouse presents an interactive exhibition on shipbuilding, sailing, marine bionics and yacht design.

Photo: Jochen Mönch / BTZ Bremer Touristik-Zentrale  
Internet: [www.bremen-tourism.de/maritime-mile](http://www.bremen-tourism.de/maritime-mile)

### The Überseestadt district



This area of Bremen offers chic waterfront lifestyle with a twist as the former docklands are transformed into the city's latest residential,

retail and office development. Contemporary architecture contrasts with old warehouses directly opposite, while trendy bars and fascinating shops attract growing numbers of visitors.

Photo: Studio Banck / BTZ Bremer Touristik-Zentrale  
Internet: [www.bremen-tourism.de/ueberseestadt](http://www.bremen-tourism.de/ueberseestadt)

### Knowledge Worlds



Bremen is an innovative place - a fact that becomes clear as soon as you visit any one of the city's numerous exhibitions on science and technology. The Science Center at Universum Bremen explores deep inside the Earth, the Ethnological Museum takes you all the way around it, and the Botanika horticultural science centre puts it under the microscope to reveal the secret world of plants - particularly rhododendrons.

Photo: Matthias Haase / Übersee-Museum Bremen  
Internet: [www.bremen-tourism.de/museums-and-discovery-worlds-1/interactive-museums](http://www.bremen-tourism.de/museums-and-discovery-worlds-1/interactive-museums)

### Airbus Defence & Space



When it comes to innovation, Bremen is reaching for the stars as a leading aerospace centre. The engineers at Airbus Defence & Space build space transporters and rocket components. You can watch them at work and learn how astronauts live on the International Space Station, which is monitored by Airbus Defence & Space.

Book ticket online:  
[www.bremen-tourism.de/guided-space-tour](http://www.bremen-tourism.de/guided-space-tour)

Photo: Jonas Ginter / BTZ Bremer Touristik-Zentrale  
Address: Airbus-Allee 1  
Tickets: 18,50 € per person  
Internet: <https://www.bremen-tourism.de/airbus>

## ERLEBNISCARD BREMEN



Studio B / BTZ Bremer Touristik-Zentrale

Save money on transport and more in Bremen!

The Bremen discovery card (ErlebnisCARD) is great value for money!

Including:

- Use of local public transport\*
- Ferry crossing from Osterdeich to Café Sand
- Discounts of up to 50%

Price example:

1-day card for 1 adult +

2 children (aged 14 or under) € 9,50

Available at:

- Bremen Tourist Informations at main train station and Böttcherstrasse 4 / Glockenspiel house
- Service Centre: +49 421 / 30 800 10
- online: [www.bremen-tourism.de/erlebniscard](http://www.bremen-tourism.de/erlebniscard)
- in various Hotels and campsites
- Bremen Airport at Martinshof Airport-Shop

\*from 6pm on the day before the starting date of the card (buses, trams and regional trains in Bremen and Bremen-Nord, any nicht supplements)

## ErlebnisCARD Bremen

Save money on transport and more in Bremen!



Photo: BTZ Bremer Touristik-Zentrale

Internet: [www.bremen-tourism.de/erlebniscard](http://www.bremen-tourism.de/erlebniscard)

## Public transport



When it comes to public transport, Bremen offers an extensive and reliable tram and bus network.

Every day, Bremer Strassenbahn AG

operates around 380 modern trams and buses, which keep the city of Bremen moving.

Photo: BSAG

Internet: [www.bsag.de/en/offers.html](http://www.bsag.de/en/offers.html)

## Sielwall ferry 'Ostertor'



Take the ferry straight from the 'Viertel' bohemian quarter to the beach and Kleine Weser park. The Sielwall ferry shuttles between

Sielwall/Osterdeich and Café Sand on the Stadtwerder peninsula

Photo: Ingo Wagner / WFB Wirtschaftsförderung Bremen

Address: Hal Över

Phone: +49 421 338989

Internet: [www.bremen-tourism.de/sielwall-ferry-ostertor](http://www.bremen-tourism.de/sielwall-ferry-ostertor)

## GUIDED TOURS



Michael Bahlo / BTZ Bremer Touristik-Zentrale

### Guided tour of the Ratskeller



Hidden beneath the town hall lies a treasure trove in the form of the world's largest collection of German wines.

Photo: Dietmar Banck / BTZ Bremer Touristik-Zentrale  
 Address: Meeting point: Tourist Information Böttcherstrasse 4  
 Phone: +49 421 3080010  
 Tickets: 15,- pro Person  
 Internet: <https://www.bremen-tourism.de/guided-tours-tickets-and-more/tc-1310>

### Mercedes-Benz factory tour Bremen (english guided tour)



Discover what makes Mercedes-Benz cars so remarkable and see for yourself how a Mercedes is built! Find out what makes Mercedes-Benz

cars so special and take a look behind the scenes at one of the most modern automotive factories in the world, witnessing the genesis of the SL, SLC, C-Class, E-Class Coupé and the all-terrain GLC. You can visit the biggest production of cars

of the Daimler company in Bremen.

Photo: Mercedes-Benz Kundenzentrum  
 Tickets: 18,- € per person

### River Weser and harbour cruise



No trip to Bremen is complete without taking a boat trip to the harbour along the Schlachte Embankment. Fascinating commentary directly from

the captain (in German, but an information sheet in English language is available) keeps you entertained along the way and there are food and drinks available on board. Have a look at maritime Bremen! Learn a lot about harbour and trade in Bremen.

Photo: Hal över  
 Address: Round trips from/to Martinianleger  
 Opening hours: February, March and December: Sat, Sun and on holidays at 1.30pm, 3.15pm April and October: Mo-Fri 11.45am, 1.30pm, 3.15pm, Sat, Sun and on holidays additional at 10.15am and 4.45pm  
 Phone: +49 421 3080010  
 Tickets: 11,00 € per person  
 Internet: <https://www.bremen-tourism.de/guided-tours-tickets-and-more/tc-336>

### Daily guided walk



Discover the charm of Bremen's historical city centre on foot and learn more about the city's history and people. You will see the famous town

musicians as well as the impressive town hall, belonging to the UNESCO world heritage sites. You stroll along the river side and your guide will take you to the hidden small streets of the oldest quarter of Bremen, called Schnoor.

Photo: Manuela Gangl / BTZ Bremer Touristik-Zentrale

Address: Tourist-Information: Langenstrasse 2-4/marketplace

Opening hours: daily at 2pm, additional tours at 11am on Saturdays (bilingual German/English)

Phone: +49 421 30 800 10

Tickets: 8,50 € per person

Internet: <http://www.bremen-tourism.de/guided-tours-tickets-and-more/tc-1071>

More Info: English guided tour: every Saturday at 3pm

## City Tour Bremen



Discover more about Bremen and its 1,200 years of history, and hear lots of fascinating stories along the way.

Convenient, informative

and entertaining. Find out how old Roland is, what the Bremen flag is called, how high the Fallturm drop tower is and much, much more. Explore the past and present of this Hanseatic city aboard a luxury tour bus.

Book ticket online:

[www.bremen-tourism.de/sightseeing-tour-bus](http://www.bremen-tourism.de/sightseeing-tour-bus)

Photo: BTZ Bremer Touristik-Zentrale und Reisedienst von Rahden

Address: Meeting point 11 am: main railway station, central coach station, platform L || 12.30 pm: Domsheide/ in front of the concert hall "Glocke"

Opening hours: daily at 11 a.m and 12:30 p.m.

Phone:

Tickets: 16.90€ per person

Internet: [www.bremen-tourism.de/guided-tours-tickets-and-more/tc-1240](http://www.bremen-tourism.de/guided-tours-tickets-and-more/tc-1240)

## Beck's Brewery Tour



The tour (2 hours) provides a wealth of fascinating information about the brewery, the art of beer brewing and the Beck`s and

Haake-Beck brands. It covers the museum, ingredients store and brewhouse, and runs past

malt silos, fermentation and storage tanks. The tour is followed by beer tasting in the guest room.

Book ticket online:

[www.bremen-tourism.de/ticket-becks](http://www.bremen-tourism.de/ticket-becks)

Photo: Michael Ihle / AB Inbev, Brauerei Beck & Co

Address: Am Deich 18/19

Public Transport: tram: 1, 2, 3 / bus 25, 26, 27, 63: stop Am Brill

Opening hours: Mondays - Saturdays

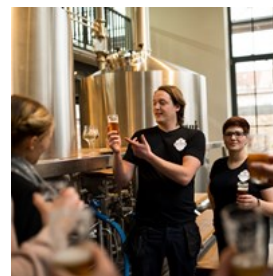
Phone: +49 421 50 94 5555

Tickets: 12,90 € per person

Internet: [www.bremen-tourism.de/becks-brewery-tour](http://www.bremen-tourism.de/becks-brewery-tour)

[www.becks.de/besucherzentrum](http://www.becks.de/besucherzentrum)

## Union Brewery



Visit this Bremen craft brewery with its own mash house, botting plant, brewpub, and covered beer garden all in a historical setting. You

can find our friendly Bremen brewery in an impressive old brickwork building. It was founded in 1907 by innkeepers in Bremen, closed in 1968 and restored to former glory in 2014/2015.

Enjoy a range of craft beers that have been brewed and bottled here with great care and attention since the end of December 2015. You can sample freshly made beers straight from the tap at the brewery's restaurant and tuck into regional food and local specialities. The covered beer garden is open throughout the year. Please enquire about special offers for small and large groups. You can buy selected bottled beers to take home with you from the craft beer shop in the brewhouse.

You will be able to discover all about craft brewing in Bremen during an hour-long guided

tour, a two-and-a-half-hour beer seminar or a day-long brewing seminar. You can also arrange an individual tour of the brewery with one of the two master brewers.

Photo: Jonas Ginter / Freie Brau Union Bremen GmbH  
Opening hours: Mon-Fri from 4pm, Sat+Sun from 11am  
Tickets: 12,00€ per person  
Internet: [www.bremen-tourism.de/union-brewery](http://www.bremen-tourism.de/union-brewery)

## DO & SEE



Michael Bahlo / BTZ Bremer Touristik-Zentrale

Whether walking, cycling or using public transport, getting around Bremen is easy. Bremen measures only 10 km by 2 km, and is filled with architectural gems such as the Schnoor-Viertel complete with its' medieval buildings. The Bremer Kunsthalle houses one of Germany's finest art collections.

There are few public parks which have a vibrancy like Bürgerpark, located in the middle of the city. Stop to have a bite to eat at the cafe, play a round of miniature golf or bring a blanket and watch the world pass by.

Sports fans will already be aware that Bremen is the home of Werder Bremen, a German premier league (Bundesliga) team. Stadium tours are offered for those who want to get up close and personal with the home of this famous team.

There are many museums and galleries dotted

throughout the city, and a family friendly, interactive science center, Universum Bremen.

There is always something exciting going on in Bremen, Since 1036 during the last two weeks of October, Bremen has hosted Freimarkt, one of the largest fairground festivals in Europe.

With so much to see, eat, do and experience - let Bremen lead you down its' cobbled streets to an adventure that awaits.

### Bremen Town Musicians



The best-loved representation of the Town Musicians is the internationally acclaimed bronze sculpture by Gerhard Marcks dating from 1951. It stands on the western side of the town hall.

Photo: Jonas Ginter / BTZ Bremer Touristik-Zentrale  
Address: Am Markt 21  
Internet: [www.bremen-tourism.de/bremen-town-musicians-1](http://www.bremen-tourism.de/bremen-town-musicians-1)

### Town Hall - UNESCO World Heritage Site



Built between 1405 and 1410 in the Gothic style, it is one of the greatest testaments to north German architecture. Its facade is fascinating and one of the most striking in Europe. It was created by Lüder von Bentheim, in the Weser Renaissance style, as part of a reconstruction project which took place 200 years later. Book ticket online:

[www.bremen-tourism.de/town-hall-ticket](http://www.bremen-tourism.de/town-hall-ticket)

Photo: Ingrid Krause / BTZ Bremer Touristik-Zentrale  
Address: Am Markt 21



Phone: +49 421 30 800 10

Tickets: 6,50 € per person

Internet: [www.bremen-tourism.de/town-hall-ticket](http://www.bremen-tourism.de/town-hall-ticket)

More Info: [www.bremen-tourism.de/town-hall](http://www.bremen-tourism.de/town-hall)

### Böttcherstraße



Böttcherstraße was built in the 1920's, the 110 metre-long lane houses shops and restaurants, Bremen's casino, museums, workshops and the carillon.

Photo: Jochen Mönch / BTZ Bremer Touristik-Zentrale

Address: Böttcherstraße

Phone: +49 421 33 88 20

Internet: [www.bremen-tourism.de/boettcherstrasse-4](http://www.bremen-tourism.de/boettcherstrasse-4)

More Info: [www.boettcherstrasse.de/en](http://www.boettcherstrasse.de/en)

### Kunsthalle art gallery



The Kunsthalle's collection of paintings and sculpture spans a period from the 15th century to the present day and includes works

by Delacroix, Liebermann, Corinth, Modersohn-Becker and Beckmann. With some 220,000 prints and drawings, the graphics gallery contains one of the largest collections in Europe, featuring mostly German and French drawings and prints from the 19th century.

Book ticket online:

[www.bremen-tourism.de/ticket-kunsthalle](http://www.bremen-tourism.de/ticket-kunsthalle)

Photo: Ingrid Krause / BTZ Bremer Touristik-Zentrale

Address: Am Wall 207

Opening hours: Closed on Mondays

Phone: +49 421 329 080

Internet:

[www.bremen-tourism.de/kunsthalle-bremen-art-museum](http://www.bremen-tourism.de/kunsthalle-bremen-art-museum)

More Info: [www.kunsthalle-bremen.de](http://www.kunsthalle-bremen.de)

### St. Petri Dom



St. Petri Dom is a gothic cathedral with over 1,200 years of staying power. World-famous organ and crypt.

Photo: BTZ Bremer Touristik-Zentrale

Address: Sandstraße 10-12

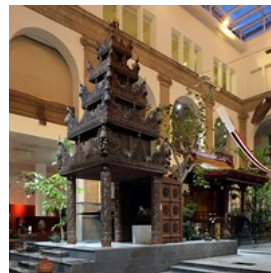
Public Transport: tram/bus to Domsheide

Phone: +49 421 36 50 40

Internet: [www.bremen-tourism.de/st-peters-cathedral](http://www.bremen-tourism.de/st-peters-cathedral)

[www.stpetridom.de](http://www.stpetridom.de)

### Bremen Ethnological Museum



A number of connected galleries on nature, culture and trade combine to create a journey of discovery around the world, with

engaging insights into overseas civilisations. The museum brings a dazzling variety of world cultures to life.

Book ticket online:

[www.bremen-tourism.de/ticket-uebersee-museum](http://www.bremen-tourism.de/ticket-uebersee-museum)

Photo: Ingo Wagner / Übersee-Museum Bremen

Address: Bahnhofplatz 13

Phone: +49 421 160 38 101

Internet:

[www.bremen-tourism.de/bremen-ethnological-museum-2](http://www.bremen-tourism.de/bremen-ethnological-museum-2)

More Info: [www.uebersee-museum.de](http://www.uebersee-museum.de)

### Schlachte Embankment



Soak in the maritime climate and longingly watch historic and modern ships float past as you relax in one of the countless beer gardens

and restaurants. Pleasure cruises to many destinations depart daily.

Photo: Jonas Ginter / BTZ Bremer Touristik-Zentrale

Internet:

[www.bremen-tourism.de/schlachte-embankment-bremen](http://www.bremen-tourism.de/schlachte-embankment-bremen)

More Info: [www.schlachte-bremen.de](http://www.schlachte-bremen.de)

### Alexander von Humboldt – Das Schiff



Green Sails and the magic of Joe Cockers „Sail away“ – that’s the story of the famous squarerigger „Alexander von Humboldt“. The hotel

and restaurant service aboard offers you a unique maritime adventure in the heart of Bremen.

Photo: Andrea Lörinc / Alexander von Humboldt - Das Schiff

Address: Konsul-Smidt-Straße 10, 28217 Bremen

Internet:

[www.bremen-tourism.de/alexander-von-humboldt-the-ship-1](http://www.bremen-tourism.de/alexander-von-humboldt-the-ship-1)

More Info: [www.alex-das-schiff.de](http://www.alex-das-schiff.de)

### Universum Bremen



Universum Bremen presents science as an adventure, with more than 250 exhibits in the Science Center and EntdeckerPark plus

temporary exhibitions in the SchauBox. Book ticket online:

[www.bremen-tourism.de/ticket-universum](http://www.bremen-tourism.de/ticket-universum)

Photo: Universum Bremen

Address: Wiener Strasse 2

Phone: +49 421 33 46 0

Tickets: 16,00 € per person

Internet: [www.bremen-tourism.de/universum-bremen](http://www.bremen-tourism.de/universum-bremen)

More Info: [www.universum-bremen.de](http://www.universum-bremen.de)

### botanika - the green science center



3,000m<sup>2</sup> of entertainment and interesting information on nature and plants, sensory stimulation, biodiversity and culture from various

regions of Asia. In the discovery centre, interactive exhibits bring the fascinating world of plants to life in new and exciting ways.

Book ticket online:

[www.bremen-tourism.de/ticket-botanika](http://www.bremen-tourism.de/ticket-botanika)

Photo: Marcus Meyer / botanika

Address: Deliusweg 40

Phone: +49 421 277 00 44

Tickets: 10,50€ per person

Internet: [www.bremen-tourism.de/botanika](http://www.bremen-tourism.de/botanika)

More Info: [www.botanika-bremen.de](http://www.botanika-bremen.de)

### The Bürgerpark



The Bürgerpark is one of Germany’s best-maintained country parks. Together with the adjacent woodland, it covers an area of 202

hectares.

Photo: BTZ Bremer Touristik-Zentrale

Phone: +49 421 342 070

Internet: [www.bremen-tourism.de/buergerpark](http://www.bremen-tourism.de/buergerpark)

More Info: [www.buergerpark.de](http://www.buergerpark.de)

### Theater am Goetheplatz



With seating for more than 800 people, the classically elegant Theater am Goetheplatz is the largest venue of the Bremen Theatre

ensemble. Its programme includes opera, operettas, plays and dance theatre. The

playhouse also contains the Bremen theatre gallery which hosts temporary exhibitions.

Photo: Hans-Joachim Harbeck / BTZ Bremer

Touristik-Zentrale

Address: Goetheplatz 1-3, 28203 Bremen

Phone: +49 421 36 53 333

Internet: [www.bremen-tourism.de/bremen-theatre](http://www.bremen-tourism.de/bremen-theatre)

More Info: [www.theaterbremen.de](http://www.theaterbremen.de)

### The Viertel ('quarter')



The Viertel (the quarter) is just a short walk from the city centre and is the most colourful and bohemian area of Bremen. It is what locals call Bremen's Ostertor and Steintor districts. Just a few minutes' walk from the city centre, this is the most colourful and bohemian area of Bremen. Popular for kitsch entertainment and the arts, theatres and museums, it offers a cosmopolitan flair and diverse, offbeat nightlife. There are lots of bars, restaurants and pubs and no closing time, so you can easily party till dawn.

Shopping in the Ostertor and Steintor districts  
Alternative shopping at its best: the Ostertor/Steintor quarter is known for its quirky shops, and for specialist outlets such as a spice shop and general store, run by the fourth generation of the same family and featuring art nouveau fixtures and fittings.

#### Cultural mile

The Viertel starts with the 'cultural mile' at Wallanlagen Park. This consists of the Kunsthalle art gallery, Gerhard Marcks House, Wilhelm Wagenfeld House and the Bremen Theatre, which stages both opera and plays - culture at its very best. The Teatro café and restaurant on Goetheplatz square is ideally situated for a break

amidst all the culture.

Photo: Jonas Ginter / BTZ Bremer Touristik-Zentrale

Internet: [www.bremen-tourism.de/the-viertel-quarter](http://www.bremen-tourism.de/the-viertel-quarter)

### Überseestadt



Bremen's former docklands are being transformed into a vibrant quarter for the 21st century, with a great selection of cafés, bars and restaurants. Lots to see and do, new events all the time, modern architecture and the charm of historical warehouse buildings: this port district in the midst of change combines its maritime past with a pioneering present.

Photo: Ingrid Krause / BTZ Bremer Touristik-Zentrale

Phone: +49 421 30 800 10

Internet: [www.bremen-tourism.de/ueberseestadt](http://www.bremen-tourism.de/ueberseestadt)

More Info: [www.ueberseestadt-bremen.de](http://www.ueberseestadt-bremen.de)

### Airbus Defence & Space



Bremen is one of the leading centres in Europe for space travel. The European contribution to the International Space Station (ISS) was built at Airbus Defence & Space. How do people live, sleep, and carry out research in zero gravity? Answers to these and other questions are provided in a replica of the Columbus module during the guided space tour (German only).

Book ticket online:

[www.bremen-tourism.de/guided-space-tour](http://www.bremen-tourism.de/guided-space-tour)

Photo: Jan Rathke / BTZ Bremer Touristik-Zentrale

Address: Airbus-Allee 1

Phone: +49 421 539 0

Tickets: 18,50 € per person

Internet: [www.bremen-tourism.de/guided-tours-tickets-and-m](http://www.bremen-tourism.de/guided-tours-tickets-and-m)

ore/tc-955

### Werder Bremen Football Club



One of the most beautiful arenas in the German Bundesliga, between August and May the Weser Stadium provides the setting for gripping, exciting and attractive football matches played by Werder Bremen, the 2004 German Champions and German Football Association (DFB) cup winners.

Hot tip: It's possible to explore the stadium as part of a guided tour. Another attraction is the Wuseum, the Werder Bremen museum.

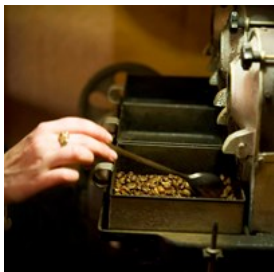
Photo: BTZ Bremer Touristik-Zentrale

Address: Franz-Böhmert-Straße 1c

Internet: [www.bremen-tourism.de/werder-bremen-1](http://www.bremen-tourism.de/werder-bremen-1)

More Info: [www.werder.de](http://www.werder.de)

### Münchhausen



Find out about Bremen's history as a city of coffee, watch beans being roasted and sample coffees from around the world. How did Bremen

become a 'coffee city'? And what happens to coffee at a roasting house? For answers to those questions and more, visit the Kaffeerösterei August Münchhausen.

You can of course also drink and buy coffee.

Photo: Björn Behrens / Kaffeerösterei Münchhausen

Address: Geeren 24 28195 Bremen

Opening hours: Mon-Fri 10am-12.30pm

Tickets: Tours by arrangement

Internet: [www.bremen-tourism.de/kaffeeoesterei-august-muenchhausen-1](http://www.bremen-tourism.de/kaffeeoesterei-august-muenchhausen-1)

More Info: [www.muenchhausen-kaffee.de](http://www.muenchhausen-kaffee.de)

### GOP Varieté Theater Bremen



Fans of contemporary variety theatre will be right at home in Bremen's Überseestadt district. The GOP Variety Theatre and the adjacent

Steigenberger Hotel are located by the waterside in the Weser quarter at the eastern entrance to Überseestadt.

Bremen's new GOP Variety Theatre will stage imaginative and engaging performances for all the family featuring internationally acclaimed acrobats and entertainers, outstanding dancers, exceptional comedians and gifted musicians.

In the stylish surroundings of the theatre, which combines clean, modern lines and warm tones, visitors will have an excellent view of the stage from all 400 seats and can enjoy a variety of freshly prepared dishes at the GOP Restaurant before the show. After the performance, guests have the opportunity to round off their evening in style at the GOP Dance Club overlooking the river Weser.

Photo: Jonas Ginter / BTZ Bremer Touristik-Zentrale

Address: Am Weser-Terminal 4, 28217 Bremen

Internet:

[www.bremen-tourism.de/gop-variete-theater-bremen](http://www.bremen-tourism.de/gop-variete-theater-bremen)

### Maritime mile



Bremen's seafaring traditions are especially well preserved in the Vegesack district to the north, where Germany's first man-made harbour

was created almost 400 years ago. Today the recently completed 1.8km maritime mile along the river Weser boasts a range of attractions

including the multimedia Spicarium exhibition, captains' houses, the signal station and the towboat Regina.

Photo: Jan Rathke / BTZ Bremer Touristik-Zentrale  
Phone: +49 421 222 399 0  
Internet: [www.bremen-tourism.de/maritime-mile](http://www.bremen-tourism.de/maritime-mile)  
More Info: [www.maritimemeile-bremen.de](http://www.maritimemeile-bremen.de)

### Cycling in Bremen -Discover Bremen by bike!



Bremen is famous for being a walkable and well-connected city, but few people are aware that it also has more cycle paths than most other cities in Germany. However, these are not the only reasons why cycling in Bremen is a true pleasure.

The many parks and green spaces and the almost complete lack of inclines make it the perfect place for bike rides with the whole family.

From cycling enthusiasts to casual recreational riders - the many cycle paths in Bremen offer something for everyone!

Photo: Ingo Wagner / WFB Wirtschaftsförderung Bremen  
Internet: [www.bremen-tourism.de/cycling](http://www.bremen-tourism.de/cycling)

### Worpswede



Take a trip right into the heartbeat of the local art world. This little village surrounded by marshland is a celebrated artist colony.

Photo: Carsten Heidmann / BTZ Bremer Touristik-Zentrale  
Phone: +49 479 293 58 20  
Internet: [www.bremen-tourism.de/worpswede](http://www.bremen-tourism.de/worpswede)  
More Info: [www.worpswede.de](http://www.worpswede.de)

## DINING



Rike Oehlerking / BTZ Bremer Touristik-Zentrale

Calling all foodies! As you wander through the twisting cobbled streets you will be seduced by a mix of trendy bistros, international cafés and home style restaurants serving hearty local specialties. Kohl und Pinkel (cabbage and spicy sausage) keep Bremen fans wanting for more. Labskaus, Grünkohl and Knipp, a poor man's mix of grits and bacon served with fried potatoes and apples, is also extremely popular. Bremen is also a destination for wine lovers - Bremer Ratskeller has the world's largest collection of wine. And of course, Bremen is the home of Beck's Beer.

### Bremer Ratskeller



Bremer Ratskeller has been going strong since 1405 and rumored to be God's very own wine cellar! The atmosphere in this world heritage building will leave you addicted. A German foodie institution not to be missed, it also has the world's largest collection of German wines.

Book ticket online:

[www.bremen-tourism.de/ticket-ratskeller](http://www.bremen-tourism.de/ticket-ratskeller)

Photo: Studio Banck / BTZ Bremer Touristik-Zentrale  
Address: Am Markt

Phone: +49 421 321676

Internet: [www.ratskeller-bremen.de](http://www.ratskeller-bremen.de)

More Info: [www.bremen-tourism.de/bremens-ratskeller](http://www.bremen-tourism.de/bremens-ratskeller)

### Vai Vai - Steaks, Burger, Bar

With its industrial look, Vai Vai offers relaxed and uncomplicated dining in an urban style. Repurposed iron shelving and vintage furniture, industrial lamps and rustic wooden tables, concrete walls and a tiled bar – perfectly executed design for a feel-good atmosphere.

Address: Am Weser-Terminal 10

Internet: [www.bremen-tourism.de/vai-vai](http://www.bremen-tourism.de/vai-vai)

### Übersee Restaurant



Italian and Mediterranean cuisine, international specialities, breakfast, brunch, cakes and gateaux, lounge with 35 seats, events for up to 500 people.

Photo: Übersee-Restaurant

Address: Bahnhofplatz 13

Phone: +49 421 9579986

Internet: [www.restaurant-uebersee.de](http://www.restaurant-uebersee.de)

### alto



Restaurant in Bremen's Atlantic Grand Hotel serving gourmet specialities from the grill and tartare dishes – fantastic creations in a unique setting.

Photo: alto Bremen

Address: Bredenstraße 2, 28195 Bremen

Phone: +49 421 620 625 33

Internet: [www.restaurant-alto.de/en/](http://www.restaurant-alto.de/en/)

More Info: [www.bremen-tourism.de/alto](http://www.bremen-tourism.de/alto)

### Beck's in 'n Snoor



A cosy restaurant in Bremen's pretty old quarter serving an extensive range of food and drink on three floors.

Photo: Becks in'n Snoor

Address: Schnoor 34/36, 28195 Bremen

Phone: +49 421 323130

Internet: [www.becks-im-schnoor.de](http://www.becks-im-schnoor.de)

More Info: [www.bremen-tourism.de/becks-inn-snoor](http://www.bremen-tourism.de/becks-inn-snoor)

### Schüttinger Brewpub



Schüttinger Brewpub is the best brewpub in Bremen! Rustic, cosy pub serving house beer and hearty food.

Photo: Schüttinger Bremen

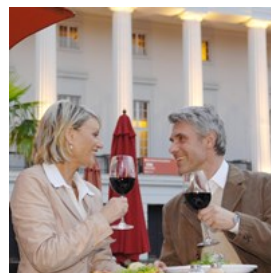
Address: Hinter dem Schütting 12-13, 28195 Bremen

Phone: +49 421 337 66 33

Internet: [www.schuettinger.de](http://www.schuettinger.de)

More Info: [www.bremen-tourism.de/schuettinger-brewpub](http://www.bremen-tourism.de/schuettinger-brewpub)

### Theatro - café, tapas y más



Restaurant and café at the Goethe Theatre, on the 'cultural mile' near the Kunsthalle art gallery. Fresh Mediterranean cuisine from tapas to pizza.

Photo: Hans-Joachim Harbeck / BTZ Bremer Touristik-Zentrale

Address: Goetheplatz 1-3, 28195 Bremen

Phone: +49 421 326080

Internet: [www.theatro.de](http://www.theatro.de)

### Knurrhahn fish restaurant



If you are looking for delicious seafood dishes at reasonable prices, this is the place for you. Specialities from the region, modern fish creations, salads and snacks.

Photo: Emre Avdanlioglu

Address: Schlüsselkorb 32-33, 28195 Bremen

Phone: +49 421 323128

Internet: [www.fischrestaurant-knurrhahn.de](http://www.fischrestaurant-knurrhahn.de)

More Info:

[www.bremen-tourism.de/knurrhahn-fish-restaurant](http://www.bremen-tourism.de/knurrhahn-fish-restaurant)

### Comturei



Franco-German cuisine, historical vaulted cellar, storybook medieval banquets, meat from the spit.

Photo: Fotodesign Czerski / BTZ Bremer Touristik-Zentrale

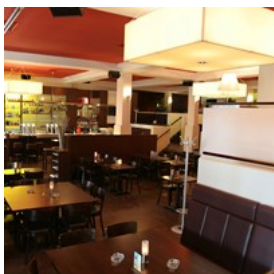
Address: Ostertorstraße 30/32

Phone: +49 421 325050

Internet: [www.restaurant-comturei-bremen.de](http://www.restaurant-comturei-bremen.de)

More Info: [www.bremen-tourism.de/comturei](http://www.bremen-tourism.de/comturei)

### Luv Restaurant, Café & Bar



Luv Restaurant, Café & Bar offers international cocktails, breakfast (Sat-Sun)—please book in advance—daily lunch specials, cakes and international food and drink.

Photo: Luv Restaurant

Address: Schlachte 15-18, 28195 Bremen - Schlachte

Phone: +49 421 165 55 99

Internet: [www.restaurant-luv.de](http://www.restaurant-luv.de)

More Info: [www.bremen-tourism.de/luv-restaurant](http://www.bremen-tourism.de/luv-restaurant)

### Osteria



At Osteria both locals and tourists cram in for an abundance of fresh Italian food, while the resident guitar player strums a fun and casual spirit.

Photo: Studio Banck / BTZ Bremer Touristik-Zentrale

Address: Schlachte 1, 28195 Bremen

Phone: +49 421 339 82 07

Internet: [www.osteria-bremen.de](http://www.osteria-bremen.de)

More Info: [www.bremen-tourism.de/osteria](http://www.bremen-tourism.de/osteria)

### 'Pannekoekschip' Admiral Nelson



An authentic replica of a frigate, serving pancakes in all conceivable variations and other dishes. This charming vessel offers a pirate-themed adventure for all ages.

Photo: Pannekoekship Admiral Nelson

Address: Schlachte/Anleger 1, 28195 Bremen

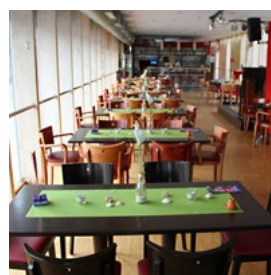
Phone: +49 421 3649984

Internet: [www.admiral-nelson.de](http://www.admiral-nelson.de)

More Info:

[www.bremen-tourism.de/pannekoekschip-admiral-nelson](http://www.bremen-tourism.de/pannekoekschip-admiral-nelson)

### Theaterschiff Bremen



Wine and dine on Bremen's legendary floating theatre ship. Theaterschiff Bremen is bistro and restaurant in one. It is essential to book in advance.

Photo: Theaterschiff Bremen

Address: Tiefer 104/Anleger 4, 28195 Bremen

Phone: +49 421 790 86 02

Internet: [www.theaterschiff-bremen.de](http://www.theaterschiff-bremen.de)

More Info:

[www.bremen-tourism.de/bremen-theatre-ship-bistro](http://www.bremen-tourism.de/bremen-theatre-ship-bistro)

## Meierei Bürgerpark



Gourmet restaurant; open fire; garden and terrace with waiter service; wine tasting

Photo: Meierei im Bürgerpark

Address: Bürgerpark 1, 28209 Bremen

Phone: +49 421 3408619

Internet: [www.meierei-bremen.de](http://www.meierei-bremen.de)

More Info: [www.bremen-tourism.de/meierei-buergerpark](http://www.bremen-tourism.de/meierei-buergerpark)

## emma am see



The new restaurant in the middle of Bremen's Bürgerpark. Classic dishes, refreshing drinks and an exceptional setting on the shores of the lake.

Photo: emma am see

Address: Bürgerpark, 28209 Bremen

Phone: +49 421 84138470

Internet: [www.emma-am-see.de](http://www.emma-am-see.de)

More Info: [www.bremen-tourism.de/emma-am-see](http://www.bremen-tourism.de/emma-am-see)

## Restaurant RIVA



Sun-drenched Mediterranean cuisine overlooking the waters of the Weser, large sun terrace with views of the river and the neighbouring Landmark Tower.

Photo: Foto-Studio Penz

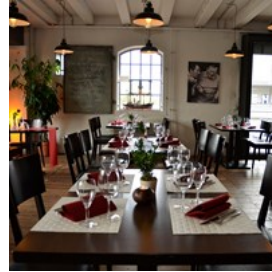
Address: Konsul-Smidt-Straße 88, 28217 Bremen

Phone: +49 421 38039162

Internet: [www.riva-restaurant.de](http://www.riva-restaurant.de)

More Info: [www.bremen-tourism.de/restaurant-riva](http://www.bremen-tourism.de/restaurant-riva)

## PORT im Speicher XI



Add maritime flair to your evening event. You can combine the museum exhibition, club rooms, restaurant and event spaces.

Photo: [em]design-bremen

Address: Am Speicher XI 1 28217 Bremen

Phone: +49 421 619410

Internet: [www.port-speicherxi.de/](http://www.port-speicherxi.de/)

More Info: [www.bremen-tourism.de/port-im-speicher-11](http://www.bremen-tourism.de/port-im-speicher-11)

## CAFES



Ingrid Krause / BTZ Bremer Touristik-Zentrale

Sit down and relax in one of Bremen's many cafés. Whether you are in the mood for something sweet or just a beer, you will find a place to feed your mind and soul.

## Kaffee Mühle



At Kaffee Mühle you can enjoy coffee, beer and snacks in an old windmill. Unbeatable views and relaxing atmosphere from lunchtime to midnight.

Also open during sunny summer mornings.

Photo: Alena Zeman / Fotowettbewerb BTZ Bremer



Touristik-Zentrale

Address: Am Wall 212, 28195 Bremen

Phone: +49 421 144 66

Internet: [www.muehle-bremen.de](http://www.muehle-bremen.de)

### emma am see

A restaurant in the middle of Bremen's Bürgerpark. Classic dishes, refreshing drinks and an exceptional setting on the shores of the lake.

Address: Bürgerpark 1

Internet: [www.bremen-tourism.de/emma-am-see](http://www.bremen-tourism.de/emma-am-see)

### Konditorei Knigge



Successful for the past 120 years. Fresh pastries and homemade food. Ideal for vegetarians and diabetics.

Photo: Carsten Heidmann

Address: Sögestraße 42, 28195 Bremen

Phone: +49 421 18396

Internet: [www.knigge-shop.de](http://www.knigge-shop.de)

### Café Classico



Traditional café opposite the town hall, serving breakfast, lunch, dinner and homemade speciality cakes and ice cream.

Photo: Hotel Classico

Address: Am Markt 17, 28195 Bremen

Phone: +49 421 1784694

Internet: [www.classico-bremen.de](http://www.classico-bremen.de)

### Teestübchen im Schnoor



A quaint little café serving tea, coffee and homemade cakes. Evening meals served in the Worpsweder Stube restaurant.

Photo: Lutz Gaeth

Address: Wüste Stätte 1

Phone: +49 421 323867

Internet: [www.wueste-staette.com](http://www.wueste-staette.com)

### Konditorei Café im Schnoor



Traditional patisserie offering Bremen specialities.

Photo: Andreas Sold / Tosun

Address: Marterburg 32, 28195 Bremen

Phone: +49 421 324532

Internet: [www.schnoorkonditorei.de/en](http://www.schnoorkonditorei.de/en)

### Café Sand



Wicker beach chairs, beach volleyball, indoor and outdoor dining and plenty of sand - enjoy that holiday feeling at the heart of the city!

Photo: Ingrid Krause / BTZ Bremer Touristik-Zentrale

Address: Strandweg 106, 28201 Bremen

Phone: +49 421 556011

Internet: [www.cafe-sand.de/en.html](http://www.cafe-sand.de/en.html)

### Rauchs CaféBar



Small and friendly owner-run café with a Mediterranean atmosphere, serving breakfast and delicious Bremen coffee specialities.

Photo: Rauchs CaféBar

Address: Langenstraße 74, 28195 Bremen

Phone: +49 421 1723923

Internet: [www.rauchscafe.de](http://www.rauchscafe.de)

### Haus am Walde



Getting everything to your table as fresh as possible is the motto here - hearty fare with Mediterranean influences and homemade cake.

Beautiful summer terrace.

Photo: Haus am Walde

Address: Kuhgrabenweg 2, 28359 Bremen

Phone: +49 421 212765

Internet: [www.hausamwalde-bremen.de](http://www.hausamwalde-bremen.de)

## BARS & NIGHTLIFE



*Jonas Ginter / BTZ Bremer Touristik-Zentrale*

Bremen is not just a great city to visit during the day. There's also plenty going on at night too! Where you can party into the early hours.

As Bremen's mascots, the donkey, cat, dog and rooster, bid each other goodnight, and the Roland statue closes his eyes to sleep, the city on the Weser river comes to life once again. There are many things to experience in Bremen by night: going on a pub tour with friends in the 'Viertel' district, enjoying an evening out in a stylish bar, or dancing the night away at a trendy club on the 'disco mile'.

<http://www.bremen-tourism.de/bremen-for-night-owls>

### The disco mile



For those who want to let their hair down on the dance floor, the disco mile is the just the place. The disco mile venues are lined up one after another on 'Am Rembertiring', just a stone's throw from the main train station:

#### Stubu Dancehouse

Stubu is an absolute classic. It is so called because it was originally used by the Bremen students association. On five floors offering different styles of music, people dance and party until the early hours.

[www.stubu.de](http://www.stubu.de)

#### La Viva

La Viva is particularly popular with students. It plays the latest chart music, as well as house, hip-hip and RnB. This is certainly a place to get dolled up for!

[www.laviva-disco.de](http://www.laviva-disco.de)

#### Tower

Partygoers jam on the air guitar to the sounds of the Tower. Events here range from 'Tower rock' parties and poetry slams to concerts, often by

alternative artists.

[www.tower-bremen.de](http://www.tower-bremen.de)

### Sinatra's Dancing

If you want to dance, flirt and have fun, Sinatra's is the place for you. Chart hits, classic tunes, hot beats and cool drinks make for a lively night out in this stylish disco for the over 25s.

[www.sinatras.de](http://www.sinatras.de)

Photo: Michael Dieck, Bremen / Sinatras Dancing

Public Transport: tram/bus stop main station

### Blauer Fasan

Experience the casual bar atmosphere and enjoy first-class drinks and creative cocktails, from bar classics to offbeat creations.

Address: Langenstrasse 81

Internet: [www.bremen-tourism.de/blauer-fasan](http://www.bremen-tourism.de/blauer-fasan)

### Clubs away from the disco mile



**Modernes** This former cinema is located in the Neustadt district next to the university. It hosts parties, such as Freaky Friday, dance nights and

90s parties, as well as regular concerts and comedy gigs. On hot nights the roof can be opened to let fresh air in.

[www.modernes.de](http://www.modernes.de)

### MS Treue

This former concrete ship has been converted into a club and is moored right on the Schlachte Embankment. The programme mainly features electronic music nights as well as occasional concerts.

[www.mstreue.de](http://www.mstreue.de)

### Adiamo Dance Club

The Adiamo Dance Club, located at the GOP Variety Theatre in Bremen's Überseestadt district, offers a very modern setting in which to enjoy fantastic cocktails and music by top DJs. The four bars, dance floor and terrace with river views will ensure any night out here is a memorable one – particularly if it is combined with a show at the theatre.

[www.adiamo-bremen.de](http://www.adiamo-bremen.de)

### Soho Club

The Soho Club is also located in Bremen's Überseestadt district. This trendy hotspot is synonymous with stylish parties and offers views of Bremen's skyline. It plays a mix of club music, classic hits, funk, soul, RnB, disco, house and dance music.

### Aladin

The Aladin Music Hall in Bremen's Hemelingen district covers all the usual styles of rock music, while the former ballroom, the Tivoli, offers an eclectic mix of genres. It hosts concerts, themed parties and over-30s and over-40s nights. The Aladin can also be booked for a wide range of events.

[www.aladin-bremen.de](http://www.aladin-bremen.de)

Photo: Michael Ihle 2007 / Eventschiff Treue

### The Viertel ('quarter')



The trendy districts of Ostertor and Steintor – which the locals simply call the 'Viertel' – are only a few minutes' walk from the city centre. In the quirky pubs, trendy bars and cosy cafés here, you can relax or get into the party spirit for the night ahead. Tips on pubs and bars can be found here. Two of the best places to go dancing are

## Lila Eule and Club Moments:

### Lila Eule

Opened in January 1965, this basement disco has a long tradition. It was a meeting place for the Bremen APO (extra-parliamentary opposition) and a starting point for the German student movement of 1968. Today it is a club and concert venue, open at weekends and occasionally during the week. It offers a wide spectrum of music that includes everything from electro swing and hip-hop to indie. Thursday is student night.

[www.lilaeule.com](http://www.lilaeule.com)

### Club Moments

As colourful as the Viertel itself, Club Moments is a bar and disco and can be hired for events. It hosts salsa and Latin American dance parties weekly, GayCandy every month and regular concerts.

[www.club-moments.de](http://www.club-moments.de)

Photo: Jonas Ginter / BTZ Bremer Touristik-Zentrale

Public Transport: tram: stop Siellwall

Internet: [www.bremen-tourism.de/the-viertel-quarter](http://www.bremen-tourism.de/the-viertel-quarter)

## Neustadt district



Bremen's Neustadt district is a real insider tip. Here, on the western side of the Weser river, a new pub and entertainment quarter has emerged in recent years. Late-night revellers can enjoy cosy hang-outs with table football, quirky bars with live music and inviting restaurants with summer gardens. More tips on pubs and bars can be found here.

Photo: Rike Oehlerking / BTZ Bremer Touristik-Zentrale

## The Schlachte Embankment



The Schlachte Embankment, right by the river and at the heart of the city, is also a great location for a night out. In summer, people soak up the atmosphere in the many cafés, bars and restaurants, enjoying views of the Weser and the maritime flair right up until midnight. The beer gardens, with seating for 2,000 people, are a must for any visitor to Bremen. In winter, it is cosy indoors with cocktails and mulled wine.

Photo: Jonas Ginter / BTZ Bremer Touristik-Zentrale

Public Transport: tram/bus stop am Brill

Internet:

[www.bremen-tourism.de/schlachte-embankment-bremen](http://www.bremen-tourism.de/schlachte-embankment-bremen)

## Lemon Lounge



Lemon Lounge is a groovy cocktail bar and Bremen's place to be. Its funky drinks galore when the six barkeepers fight it out for the most mouth-watering creation.

Photo: Lemon Lounge

Address: Am Wall 164, 28195 Bremen

Phone: +49 421 514 88 55

Internet: [www.lemonlounge.de](http://www.lemonlounge.de)

## Sintras



At Sinatra's you find tunes for those over 25. Fridays, Saturdays and before holidays, this stylish establishment is a household name full of roaring oldies and cracking classics.

Photo: Michael Dieck / Sintras Dancing

Address: Rembertiring 18, 28195 Bremen  
Phone: +49 421 328 585  
Internet: [www.sinatras.de](http://www.sinatras.de)

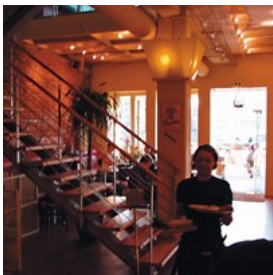
### Café & Bar Celona



A place to forget about your everyday cares and enjoy tapas, wine and good conversation in a Mediterranean-style setting with views of the river Weser.

Photo: Manuela Gangl BTZ Bremer Touristik-Zentrale  
Address: Schlachte 32, 28195 Bremen  
Public Transport: tram/bus: stop Am Brill  
Phone: +49 421 8977918  
Internet: [www.cafe-bar-celona.de](http://www.cafe-bar-celona.de)

### Camarillo



Stainless steel, glass and wood sweetened with a modern coffee and dessert bar. Pop in for a fluffy coffee or even a light snack anytime from 11.00 until late.

Photo: Camarillo  
Address: Schlachte 30, 28195 Bremen  
Public Transport: tram/bus: stop Am Brill  
Phone: +49 421 1695 454  
Internet: [www.camarillo-bremen.de](http://www.camarillo-bremen.de)

### Enchilada



Mexican specialties, big cocktail menu, happy hour every day 5-8 pm.

Photo: Studio Banck / BTZ Bremer Touristik-Zentrale  
Address: Schlachte 26, 28195 Bremen

Public Transport: tram/bus: stop Am Brill  
Phone: +49 421 16854 00  
Internet: <http://bremen.enchilada.de/>

### Bolero Schlachte



Delicious Mediterranean specialities, pasta dishes, salads and steaks along with freshly drawn beer and exceptional cocktails. Enjoy and feel at ease in the relaxing atmosphere. Happy Hour every day from 5 to 7 pm.

Photo: Diana Diederich / Bolero  
Address: Langenstraße 68, 28195 Bremen  
Public Transport: tram/bus: stop Am Brill  
Phone: +49 421 70 76 70  
Internet: [www.bremen.bolerobar.de](http://www.bremen.bolerobar.de)

### Kangaroo Island



Small Australian bar with charming flair. A warm welcome awaits at Kangaroo Island. 250 different drinks to choose from. Not to mention fresh pizza, straight from the oven.

Photo: Studio Banck / BTZ Bremer Touristik-Zentrale  
Address: Schlachte 30a, 28195 Bremen  
Public Transport: tram/bus: stop Am Brill  
Phone: +49 421 168 95 95  
Internet: [www.kangaroo-island.de](http://www.kangaroo-island.de)

### Red Rock



The bar with an international feel serving 55 different beers from 28 countries. All major sporting events are shown on big screens.

Separate smoking area.

Photo: Red Rock

Address: Schlachte 22, 28195 Bremen

Public Transport: tram/bus: stop Am Brill

Phone: +49 421 1783605

Internet: www.redrock-bremen.de

### Casino Bremen with bleibt7 Bar



The Casino Bar offers a unique ambience, as well as snacks, cocktails and any drink your heart desires. Place your bets! Smoking areas available.

Photo: Casino Bremen

Address: Schlachte 26, 28195 Bremen

Public Transport: tram/bus: stop Am Brill

Phone: +49 421 329000

### CHILLI CLUB Bremen



Restaurant, bar, lounge - all under one roof at the CHILLI CLUB. Stylish, part of the scene, located on the Weser and close to the Weser Tower. Urban

design, modern Asian cuisine and creative cocktails.

Photo: Chilli Club Bremen/Eberl

Address: Am Weser-Terminal 8, 28217 Bremen

Phone: +49 421 390 99 000

Internet: www.chillclub.de

### Aladin



From rock to techno, the dance floor's heaving with the best beats of the last 20 years at Aladin. Drinks are surprisingly reasonable priced.

Photo: Ingrid Krause / BTZ Bremer Touristik-Zentrale

Address: Hannoversche Strasse 11, 28309 Bremen

Phone: +49 421 435 150

Internet: www.aladin-bremen.de

More Info: info@aladin-bremen.de

## SHOPPING



*Hans-Joachim Harbeck / BTZ Bremer Touristik-Zentrale*

Full of unique and coveted goods, you can't escape Bremen's mix of stores and boutiques. The 16th-century Schnoor quarter is unbeatable, with fishermen and artisan cottages bursting with galleries, goldsmiths and eccentric retail establishments. Keep an eye open for aromatic teas, jewelry and hand-painted crockery.

Those with a penchant for fine spirits will find their holy grail around the main market square: Ratskeller stocks some of Germany's best wines. Just down the road, beautifully hand-crafted toys line the shelves of Martinshof. Sögestrasse comes up trumps with the swish but traditional fashion houses, Stiesing and Roland-Center. All things classy and pricey are located around Fedelhören, where delicatessens, shops and antique stores rub shoulders with designer boutiques.

On a rainy day, head for Domshof Passage. This glass-covered shopping mile is packed with exclusive little shops and boutiques to tempt even the most hardened shoppers. Visit the Ostertorviertel, or simply "Viertel", which is a lively quarter around the Ostertorsteinweg with

pubs, discotheques, cinemas, boutiques and shops with groceries from all over the world.

### Domshof Passage and Katharinen Passage



The Katharinen quarter and Domshof Passage form a 150 metre long, glass-roofed walkway linking Sögestrasse with the market on Domshof, the cathedral square. The mix of shops reflects its exclusive location and the latest trends.

Photo: Rüdiger Bahr / Fotowettbewerb 2009 der BTZ Bremer Touristik-Zentrale

Address: Katharinen-Passage, 28195 Bremen

Public Transport: Tram/Bus Stopp Schlüsselkorb

Opening hours: Mo-Fr 10 a.m.-19 p.m. and Sa 10 a.m.-18 p.m

Internet: [www.domshof-passage.de/](http://www.domshof-passage.de/)

[www.katharinenpassage.de](http://www.katharinenpassage.de)

### Ratskeller



With around 1,200 different varieties, the Bremen Ratskeller probably has the world's largest selection of German wines. Expert advice and home delivery service available.

Photo: Ingrid Krause / BTZ Bremer Touristik-Zentrale

Address: Schoppensteel 1, 28195 Bremen

Phone: +49 421 337788

Internet: [www.ratskeller.de](http://www.ratskeller.de)

More Info: tram/bus: stop Domsheide

### Bremer Bonbon Manufaktur (candy store)



Visitors to the Handwerkerhof craft centre in Bremen's Böttcherstrasse are greeted by a wonderful sweet smell - this is

where Bremen Bonbon Manufaktur is based. You can watch the sweet makers at work through a large window facing the yard, and if you are lucky you might even get to try a warm sweet.

Photo: Ingrid Krause / BTZ Bremer Touristik-Zentrale

Address: Böttcherstraße 8, 28195 Bremen

Phone: +49 421 36491231

Internet: [www.bremer-bonbon-manufaktur.de](http://www.bremer-bonbon-manufaktur.de)

More Info: tram/bus: stop Domsheide

### Waterfront



Shopping and leisure complex on the banks of the Weser: with shops, restaurants, cinema and events, the Waterfront offers something new all year round.

Photo: Waterfront Bremen

Address: AG-Weser Strasse 1, 28237 Bremen

Internet: [www.waterfront-bremen.de](http://www.waterfront-bremen.de)

More Info: tram: stop Use Akschen

### Birgitta Rust Piekfeine Brände



Glimpse behind the scenes at a distillery. Exquisite fruit schnapps and spirits. Seminars on distilling and schnapps appreciation. Tastings and tours.

Book ticket online:

[www.bremen-tourism.de/ticket-distillery](http://www.bremen-tourism.de/ticket-distillery)

Photo: Jens Schulz

Address: Hoerneckestr. 3, 28217 Bremen

Phone: +49 421 46070790

Internet: <http://www.br-piekfeinebraende.de/en/>

More Info: tram: stop Europahafen

## Weserpark



Visit Bremen's biggest shopping centre, which has 4,000 free parking spaces. Look forward to more than 100 shops as well as lots of restaurants and cafés.

Photo: Weserpark Bremen

Address: Hans-Bredow-Strasse 19, 28307 Bremen

Internet: [www.weserpark.de](http://www.weserpark.de)

More Info: bus: stop Weserpark

## Ochtum Park



The Ochtum Park is the largest factory-sales centre in Northern Germany. 43 Top brands in over 22,000 square meters with 2,200 free parking spaces and four restaurants make the Ochtum Park a shopping magnet for a hinterland of 15 million enthusiastic customers. Shop 'till you drop.

Photo: Ochtum Park Outlet-Center

Address: Bremer Straße 107, 28816 Stuhr

Internet: [www.ochtum-park.net](http://www.ochtum-park.net)

More Info: bus: stop Ochtum Park (IKEA)

## ACCOMMODATIONS



*Hotel Classico*

### At the Bremen Tourist Information Office, we offer ...



a wide range of accommodation, from 5-star hotels to cosy, family-run guesthouses. Are you looking for a central location

overlooking Bremen's market square, or would you prefer a quieter spot in the leafier part of town by the Bürgerpark?

No problem! Book with the Bremen experts - we know Bremen.

Our service team is here to help: Monday to Friday from 8.30am to 6pm and Saturday from 9.30am to 1pm. Tel. +49 421 30 800 10.

Visit [www.bremen-tourism.de](http://www.bremen-tourism.de) any time of day for all our offers and lots more information.

Photo: Jonas Ginter / BTZ Bremer Touristik-Zentrale



## Jugendherberge Bremen



Jugendherberge Bremen is a youth hostel but not only for youngsters. All ages welcome! Immaculately refurbished in 2005. Classed as one of the most beautiful hostels in Germany. Bright, spacious, very central with stunning views of the river Weser.

Photo: Bernd Langer, Studio Banck / BTZ Bremer Touristik-Zentrale  
Address: Kalkstraße 6  
Public Transport: tram/bus: stop Am Brill  
Phone: +49 421 163820  
Internet: [www.jugendherberge.de/jh/bremen/](http://www.jugendherberge.de/jh/bremen/)

## 7THINGS-my basic hotel



The hotel is located in Bremen's Technology Park. 7THINGS stands for modern building materials, light-filled rooms, cosy beds and comfortable bathrooms.

Photo: 7things - my basic hotel  
Address: Universitätsallee 4  
Public Transport: tram: stop Universität/NW1  
Phone: +49 (0) 421 69677377  
Internet: [www.7things-hotel.de](http://www.7things-hotel.de)

## InterCityHotel Bremen



Just next to the central station, InterCityHotel Bremen with its 152 rooms is located. They feature two restaurants and the rooms are bright and spacious. Your room ID card also works as a free travel card on public transports.

Photo: Fleming's Hotels / Elan Fleisher / [elanhotelpix.com](http://elanhotelpix.com)

Address: Bahnhofplatz 17-18, 28195 Bremen  
Phone: +49 421 1603-300  
Internet: [www.intercityhotel.com](http://www.intercityhotel.com)  
More Info: Mitte

## Best Western Hotel zur Post



Only ten minutes' walk from the city centre Best Western Hotel zur Post offers comfortable rooms with a free breakfast buffet every morning. The hotel also features a huge spa and fitness centre with swimming pools, saunas and fitness classes that can be used for a small fee.

Photo: [bernd-hackerl.de](http://bernd-hackerl.de) Best Western Hotel zur Post  
Address: Bahnhofplatz 11, 28195 Bremen  
Phone: +49 421 30 590  
Internet: [www.hotel-zurpost-bremen.de](http://www.hotel-zurpost-bremen.de)

## Dorint Park Hotel Bremen



A slice of imperial splendour and aristocratic good living in 200 hectares of parkland right in the city centre. Personal and perfect service. Dip your toes into the soothing spa, tickle your tongue with world class cuisine and sink into beautiful furniture to admire the immaculately-kept views.

Photo: Park Hotel Bremen  
Address: Im Bürgerpark, 28209 Bremen  
Phone: +49 421 340 80  
Internet: <http://hotel-bremen.dorint.com>

### Hotel Landgut Horn



If you rather feel like staying a bit outside the city centre, Hotel Landgut Horn should be on your list. It lies in a green and quiet area, 15 minutes' drive from Bremen and you reach the bustling city in 30 minutes by public transport. The hotel has its own restaurant and breakfast is complimentary.

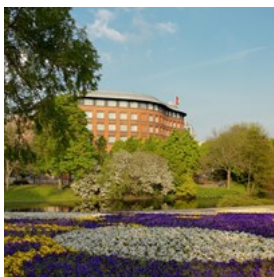
Photo: Hotel Landgut Horn

Address: Leher Heerstraße 140, 28357 Bremen

Phone: +49 421 25 890

Internet: [www.landgut-horn.de](http://www.landgut-horn.de)

### Swissôtel Bremen



The Swissôtel Bremen is a hotel with 5 star service in the heart of historic Bremen. The central position gives a magnificent view over the Bremen city wall.

Photo: Niall Clutton / Swissôtel Bremen

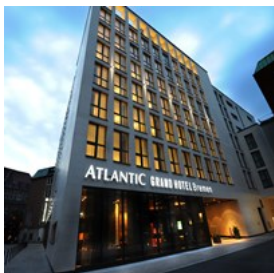
Address: Hillmannplatz 20

Public Transport: tram/bus: stop Herdentor

Phone: +49 421 62 000 0

Internet: [www.swissotel.com/bremen](http://www.swissotel.com/bremen)

### Atlantic Grand Hotel Bremen



The ATLANTIC Grand Hotel Bremen is located in a prominent location between the marketplace, Böttcherstrasse and Schlachte, the Weser river promenade. From here you have all the major attractions within walking distance. During the summer you can relax and enjoy the view over Bremen at the rooftop terrace.

Photo: Atlantic Grand Hotel Bremen

Address: Bredenstr. 2

Public Transport: tram/bus: stop Domsheide

Phone: +49 421 620620

Internet: [www.atlantic-hotels.de](http://www.atlantic-hotels.de)

### Elements pure Feng Shui Concept Hotel

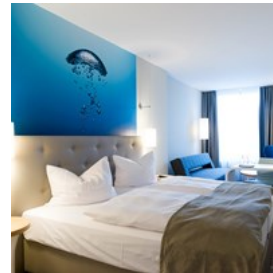


Photo: Markus Barth

Address: Birkenstraße 15, 28195 Bremen

Public Transport: tram/bus: stop Herdentor

Phone: +49 421 517 25 0

Internet: [www.elements-pure.de](http://www.elements-pure.de)

### Courtyard by Marriott Bremen



This modern renovated hotel is located in a historical building from 1913 just beside the main station. The rooms are contemporary decorated and the hotel features a 24 hour shop and a trendy bar.

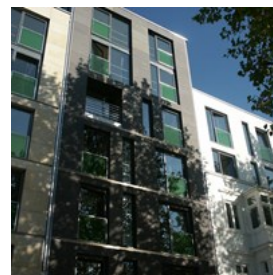
Photo: Courtyard by Marriott Bremen

Address: Theodor-Heuss-Allee 2, 28215 Bremen

Phone: +49 421 696400

Internet: [www.marriott.com](http://www.marriott.com)

### Designhotel ÜberFluss



Just 7 meters above the river, your stay will be taken to new dimensions at Designhotel ÜberFluss. In a position exposed directly in the city of Bremen, this small and fine hotel, is just a few steps from the main shopping street. You can

experience a harmonic and surprising concept with wellness area. Meet and celebrate on the river Weser.

Photo: Designhotel Überfluss Bremen  
 Address: Langenstraße 72, 28195 Bremen  
 Phone: +49 421 832 28 60  
 Internet: [www.hotel-ueberfluss.de](http://www.hotel-ueberfluss.de)

### Steigenberger Hotel



Simple elegance, clear colours and shapes dominate the interior of the Steigenberger Hotel Bremen. The hotel is located in the new Weser

district in Überseestadt, directly at the river Weser and close to the city centre. Exquisite cuisine and the connected GOP Variety Theatre make your stay a memorable experience.

Photo: tm studios visuelle medien GmbH / Steigenberger Hotel Group  
 Address: Am Weser-Terminal 6  
 Public Transport: tram/bus: stop Eduard-Schopf-Allee  
 Phone: +49 421 478370  
 Internet: [www.bremen.steigenberger.com](http://www.bremen.steigenberger.com)

### Alexander von Humboldt – Das Schiff



Green Sails and the magic of Joe Cockers „Sail away“ – that’s the story of the famous squarerigger „Alexander von Humboldt“. The hotel

and restaurant service aboard offers you a unique maritime adventure in the heart of Bremen.

Photo: Andrea Lörinc / Alexander von Humboldt - Das Schiff  
 Address: Konsul-Smidt-Straße 10, 28217 Bremen  
 Internet: [www.alex-das-schiff.de](http://www.alex-das-schiff.de)  
 Email: [info@alex-das-schiff.de](mailto:info@alex-das-schiff.de)

### Inside Premium Hotel



The future is now, the future is at Inside Premium. Ultra sleek design, futuristic decor, spa facilities par excellence and extensive

conference facilities. Located at the bank of the river Weser with excellent transport links.

Photo: INNSIDE by Mélia Bremen  
 Address: Sternentor 6, 28237 Bremen  
 Public Transport: tram: stop Use Akschen  
 Phone: +49 421 242 70  
 Internet: [www.innside.de](http://www.innside.de)

### Ibis Hotel Bremen Altstadt



This budget hotel is located just 10 minutes’ walk from the city centre with all attractions and shops. Rooms are bright and provides the most

necessary equipment. They offer an early breakfast from 04.00 in the morning.

Photo: Hotel ibis Bremen Altstadt  
 Address: Faulenstrasse 45, 28195 Bremen  
 Phone: +49 421 30480  
 Internet: [www.ibis.com](http://www.ibis.com)

### Hotel Munte am Stadtwald - Ringhotel



Surrounded by greenery, the hotel is only a 10 minutes’ drive from the main railway station and close to all city centre attractions. Two

restaurants, the Trattoria del bosco and the Wels, which serves excellent fish and game dishes, are as well part of the facilities on offer as are a swimming pool, sauna, steam room and solarium. There is also a gym 200 metres from

the hotel.

Photo: Hiotel Munte am Stadtwald  
Address: Parkallee 299  
Public Transport: bus: stop Munte  
Phone: +49 421 22020  
Internet: [www.hotel-munte.de](http://www.hotel-munte.de)

## EVENTS



BTZ Bremer Touristik-Zentrale

Top events in Bremen - Whether Sixdays or Freimarkt, Schlachte Magic or Samba Carnival - Bremen people know how to celebrate.

### Events and activities



and best events.

Whether it's art and culture, entertainment and festivals, sports or trade fairs, you'll find what you're looking for in our listing of the biggest

Photo: Jonas Ginter / BTZ Bremer Touristik-Zentrale  
Internet: [www.bremen-tourism.de/events-and-activities](http://www.bremen-tourism.de/events-and-activities)

### Ice wager (January)



The ice wager is a curious Bremen tradition dating back to 1829. Although the Weser hasn't iced over for many years, on 6 January the Three Wise

Men and a 'tailor' still meet on the dike to check if the river is frozen.

Photo: Lea Kleinspehn / BTZ Bremer Touristik-Zentrale  
Internet: [www.bremen-tourism.de/ice-wager](http://www.bremen-tourism.de/ice-wager)

### Sixdays (January)



This annual cycling spectacular, Germany's biggest six-day race, takes place early in the year in the ÖVB Arena. More than 24

professional cyclists compete on the cycle track in over 20 disciplines to secure a podium place. It's a fun festival as well as a great sporting occasion, with live music, parties and international refreshments to enjoy between the contests.

Photo: Arne Mill / ESN  
Internet: [www.bremen-tourism.de/sixdays-bremen](http://www.bremen-tourism.de/sixdays-bremen)

### Bremen Carnival (February)



In February, Germany's biggest samba carnival bursts into life in the centre of Bremen. It's an extravaganza of dazzling colours, flamboyant

costumes, fanciful masks, amazing stilt walkers and pulsating drum rhythms. The real highlight is the grand parade of all the samba groups, as a sea of people, drums and exotic costumes thrusts its way from the market square to the bohemian Steintor quarter.

Photo: Studio Banck / BTZ Bremer Touristik-Zentrale  
Internet: [www.bremen-tourism.de/bremen-samba-carnival](http://www.bremen-tourism.de/bremen-samba-carnival)

### Bremen Classic Motorshow (February)

Germany's 'economic miracle' years - that is the big theme at the Bremen Classic Motorshow. The

first major event of the season, it will take place from Friday 2 to Sunday 4 February in all the halls of Bremen Exhibition Centre. Motorcycles will be making a welcome return to the ÖVB Arena. Clubs and associations with a great deal of passion, know-how and manpower will be exhibiting.

Address: Messe Bremen

Internet: [www.bremen-tourism.de/bremen-classic-motorshow](http://www.bremen-tourism.de/bremen-classic-motorshow)

### Osterwiese (March)



The Osterwiese is a fun-filled, action-packed spring fair at Bürgerweide. People of all ages are whirled through the air, food from around the world creates a party buzz and almost 100 stalls, booths and rides offer the time of your life.

Photo: Jan Rathke / BTZ Bremer Touristik-Zentrale

Internet: [www.bremen-tourism.de/osterwiese](http://www.bremen-tourism.de/osterwiese)

### Jazzahead! (April)



Jazzahead! at Bremen Conference Centre draws music lovers from around the world with a high-quality, diverse jazz programme that has put this event firmly on Germany's cultural map. It's a unique combination of a festival, a trade show, a conference and a symposium, attracting music lovers and trade visitors from Germany, all over Europe and overseas.

Photo: Frank Pusch / Messe Bremen

Internet: [www.bremen-tourism.de/jazzahead](http://www.bremen-tourism.de/jazzahead)

### Quayside market (April)

Come and enjoy the colourful goings-on along

the Schlachte Embankment, the maritime heart of Bremen. From May to September, there's been entertainment and market stalls here every Saturday since 1986, with craftspeople and musicians all adding to the mix. Be sure not to miss it, and don't forget to bring your family and friends!

Address: Schlachte Embankment

Internet: [www.bremen-tourism.de/quayside-market](http://www.bremen-tourism.de/quayside-market)

### Poetry on the Road (May)



The international literature festival Poetry on the Road has been a firm fixture in Bremen's cultural calendar for over ten years. Taking place in May every year, it specialises in contemporary poetry and has become one of Germany's most important literary events.

Photo: Matej Meza / Poetry on the road

Internet: [www.bremen-tourism.de/poetry-on-the-road](http://www.bremen-tourism.de/poetry-on-the-road)

### Museums Night (May)



On the last Saturday in May each year, Bremen's museums and galleries stay open late for Museums Night, with many of them welcoming visitors from 6pm to 1am. During this seven-hour marathon, the museums and galleries offer guided tours, music, plays, readings, food and lots of activities for everyone.

Photo: Weserburg Museum für moderne Kunst

### La Strada (June)



At the international street circus festival LA STRADA, established artists and little-known new-comers demonstrate their many talents –

performing in the fresh air, generating a happy summer mood and entertaining spectators free of charge. LA STRADA offers something for everyone: light, breezy entertainment, stimulating plays, acrobatic shows and fun for all the family.

Photo: Ingrid Krause / BTZ Bremer Touristik-Zentrale  
Internet: [www.bremen-tourism.de/la-strada](http://www.bremen-tourism.de/la-strada)

### UNESCO World Heritage Day (June)

Bremen's town hall and Roland statue on the market square, both symbols of civic liberty, are included on the UNESCO list of World Heritage sites. Free guided tours on World Heritage Day are the ideal opportunity to see these historically significant sites.

Address: Town Hall  
Internet: [www.bremen-tourism.de/unesco-world-heritage-day](http://www.bremen-tourism.de/unesco-world-heritage-day)

### Bremiale (July)



The Bremiale arts festival is held at the fairground on the Weser riverbank. It lasts five days and offers a programme of live music

in circus tents, outdoor art, jugglers and entertainers, inventive children's games, theatre, dance and poetry readings, as well as gorgeous food. Around 100 bands and performers entertain live and free of charge.

Photo: Ingrid Krause / BTZ Bremer Touristik-Zentrale  
Internet: [www.bremen-tourism.de/bremiale](http://www.bremen-tourism.de/bremiale)

### Bremen Summer Theatre Festival – Shakespeare in the Park (July)



Every year in July, Bremen Shakespeare Company performs Shakespeare in the Park, an outdoor tapestry of burning passions, broken vows, romantic longing and betrayed friendships. Seeing the bard's plays in the Bürgerpark is always a magical experience, for this green expanse in the city centre creates the perfect romantic backdrop – a worthy setting for works by the father of English literature.

Photo: Marianne Menke / bremer shakespeare company  
Internet:  
[www.bremen-tourism.de/bremen-summer-theatre-festival](http://www.bremen-tourism.de/bremen-summer-theatre-festival)

### Maritime Festival (August)



International sea shanty stars gather every summer at the Maritime Festival in Vegesack, for an outdoor event that is unique in Germany.

Around 30 bands and choirs perform more than 150 concerts featuring traditional shanties, modern rock and Celtic folk music. The festival programme also includes exhibitions by well-known artists, the traditional cutter rowing, water and light installations at the harbour and a grand firework display.

Photo: Jörg Sarbach / Vegesack Marketing  
Internet:  
[www.bremen-tourismus.de/internationales-festival-maritim](http://www.bremen-tourismus.de/internationales-festival-maritim)

### Summer in Lesmona (August)



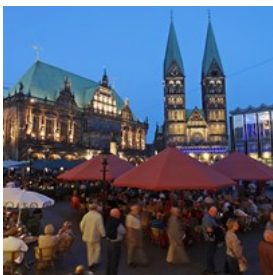
Every year, Knoops Park on the little river Lesum in northern Bremen becomes the enchanting setting for the open-air Summer in Lesmona

festival featuring the German Philharmonic Chamber Orchestra of Bremen. Distinguished soloists and the full orchestra offer exquisite musical treats in an idyllic atmosphere. This three-day concert event is perfect for picnicking to music in a scenic setting.

Photo: Marcus Meyer / Deutsche Kammerphilharmonie Bremen

Internet: [www.bremen-tourism.de/summer-in-lesmona](http://www.bremen-tourism.de/summer-in-lesmona)

### Bremen Music Festival (September)



Bremen Music Festival explores music's vast emotional spectrum, close up and from every angle. It offers a packed programme, with dazzling

performances by renowned musicians who offer stirring journeys across the centuries, genres and continents - in Bremen, Bremerhaven and selected venues in north-west Germany. The opening night presents a foretaste of the festival's variety, with musicians from around the world playing 24 concerts in eight venues around Bremen's beautifully illuminated market square.

Photo: Ingrid Krause / BTZ Bremer Touristik-Zentrale

Internet: [www.bremen-tourism.de/bremen-music-festival](http://www.bremen-tourism.de/bremen-music-festival)

### Maritime Festival Week (September)

Discover Bremen's maritime heritage. Even true landlubbers will enjoy exploring Bremen's seafaring and shipping heritage at the Maritime

Festival Week on the river Weser. There's something for everyone along the Schlachte Embankment, with a packed programme that features talks and readings on board the ships, film screenings on and by the water, a maritime market, tours of some of the ships and the Kutterpullen boat race.

Address: Schlachte Embankement

Internet: [www.bremen-tourism.de/maritime-festival-bremen](http://www.bremen-tourism.de/maritime-festival-bremen)

### Freimarkt fair (October)



Every year, Germany's oldest and third biggest public festival attracts over four million visitors to the Bürgerweide near Bremen's old quarter.

The fairground features over 320 attractions in an area covering 100,000 square metres. There's also a quieter mini-Freimarkt on the market square, with piping hot doughnuts, roasted almonds and tasty liquorice set out on traditional-style stands.

Photo: Torsten Krüger / BTZ Bremer Touristik-Zentrale

Internet: [www.bremen-tourism.de/freimarkt](http://www.bremen-tourism.de/freimarkt)

### Christmas market and Schlachte-Zauber (December)



Bremen's atmospheric Christmas market is set around the UNESCO-listed town hall and Roland statue. It is perfectly combining a

historical backdrop with romantic Christmas lights and lovingly adorned booths. There's also the Schlachte-Zauber market, which lights up the Weser embankment with its historical and maritime-themed attractions. In among the flickering torches spice sellers, blacksmiths and

bone carvers display their wares.

Photo: Torsten Krüger / BTZ Bremer Touristik-Zentrale  
 Opening hours: Christmas market: daily 10am-8.30pm,  
 sundays from 11am Schlachte-Zauber: daily 11am-8.30pm  
 Internet: [www.bremen-tourism.de/christmas](http://www.bremen-tourism.de/christmas)

## ESSENTIAL INFORMATION



Michael Bahlo / BTZ Bremer Touristik-Zentrale

### Tourist Information



We are your personal point of contact in Bremen. Drop in and see us! Tourist informations: Böttcherstraße/Glockenspiegel House at no.

4

Mon-Fri 9.30am-6.30pm

Sat 9.30am-5pm

Sun 10am-4pm

Main train station (Hauptbahnhof)

Mon-Fri

9am-6.30pm

Sat+Sun 9.30am-5pm

Photo: Jonas Ginter / BTZ Bremer Touristik-Zentrale  
 Phone: +49 421 30 800 10  
 Internet: [www.bremen-tourism.de/tourist-information-offices](http://www.bremen-tourism.de/tourist-information-offices)

### Bremen Airport



In terms of its proximity to the city centre, Bremen Airport Hans Koschnick is hard to beat. The distance from the airport to the centre of Bremen is only 3.5 kilometres. You can catch tram no. 6 from right outside the terminal.

The journey by tram from the airport to the city centre (Domsheide stop) takes only nine minutes (departures at least every ten minutes; every 20 mins. from 8pm.)

Photo: <http://www.folker-winkelmann.de> / Flughafen Bremen  
 Address: Flughafenallee 20, 28199 Bremen  
 Phone: +49 421 559 50  
 Internet: [www.bremen-tourism.de/bremen-city-airport](http://www.bremen-tourism.de/bremen-city-airport)

### Public transport



When it comes to public transport, Bremen offers an extensive and reliable tram and bus network. Tickets can be purchased at any BSAG customer

centre or sales point. They range from single fair and day tickets to 2-day travel cards and seasonal tickets. Extensive information in English is available on the website.

Photo: BSAG Bremen  
 Internet: [www.bremen-tourism.de/out-and-about-in-bremen](http://www.bremen-tourism.de/out-and-about-in-bremen)

### Bicycles



The transport of choice is the bicycle. An extensive cycle path network pays tribute to Bremen's favourite vehicle. Bremen and the surrounding

countryside are totally flat. For further



information about bike hire and cycling tours,  
please refer to our website:  
[www.bremen-tourism.de](http://www.bremen-tourism.de)

Photo: BTZ, Bremen und RAG Bremen/Nds.  
Phone: +49 421 30 800 10  
Internet: <http://www.bremen-tourism.de/guided-tours-tickets-and-more/tc-791>

### **Pharmacy**

Every pharmacy will have a list of emergency pharmacies at the door. Emergency service duty changes daily and there is no central telephone number. In a medical emergency, call 112 from a landline for an ambulance.

### **Taxi**

Taxi-Ruf-Bremen

Phone: +49 421 14 0 14 (24 hour hotline)  
Internet: [www.taxi-ruf-bremen.de](http://www.taxi-ruf-bremen.de)

### **Post**

Stamps are often available at newsagents or postcard shops. For larger items and international mail, visit any of the post offices (Deutsche Post, yellow signs).

Address: Domsheide 15, 28195 Bremen  
Opening hours: Mon-Fri 9am-7pm, Sat 9am-1pm Uhr  
Internet: [www.deutschepost.de](http://www.deutschepost.de)

### **Telephone**

Country code: +49  
City code: 0421

### **Electricity**

220/240 volts AC/ 50 Hz

### **Population**

City of Bremen: 548,319 (State of Bremen: 661,301)

### **Currency**

Euro, €1 = 100 cents

### **Opening hours**

Most shops in Bremen are open Monday to Saturday from 9am to 7 / 8pm. Some shopping centers may be open on

Sundays.

### **Internet**

[www.bremen-tourism.de](http://www.bremen-tourism.de)  
[www.facebook.com/bremenerleben](https://www.facebook.com/bremenerleben)  
[www.twitter.com/bremenerleben](https://www.twitter.com/bremenerleben)  
[www.youtube.com/bremenerleben](https://www.youtube.com/bremenerleben)

### **Newspapers**

Weser-Kurier  
Bremer Anzeiger  
Weser-Report  
Kreiszeitung  
Bremer

### **Emergency numbers**

Police: 110  
Fire and Ambulance: 112

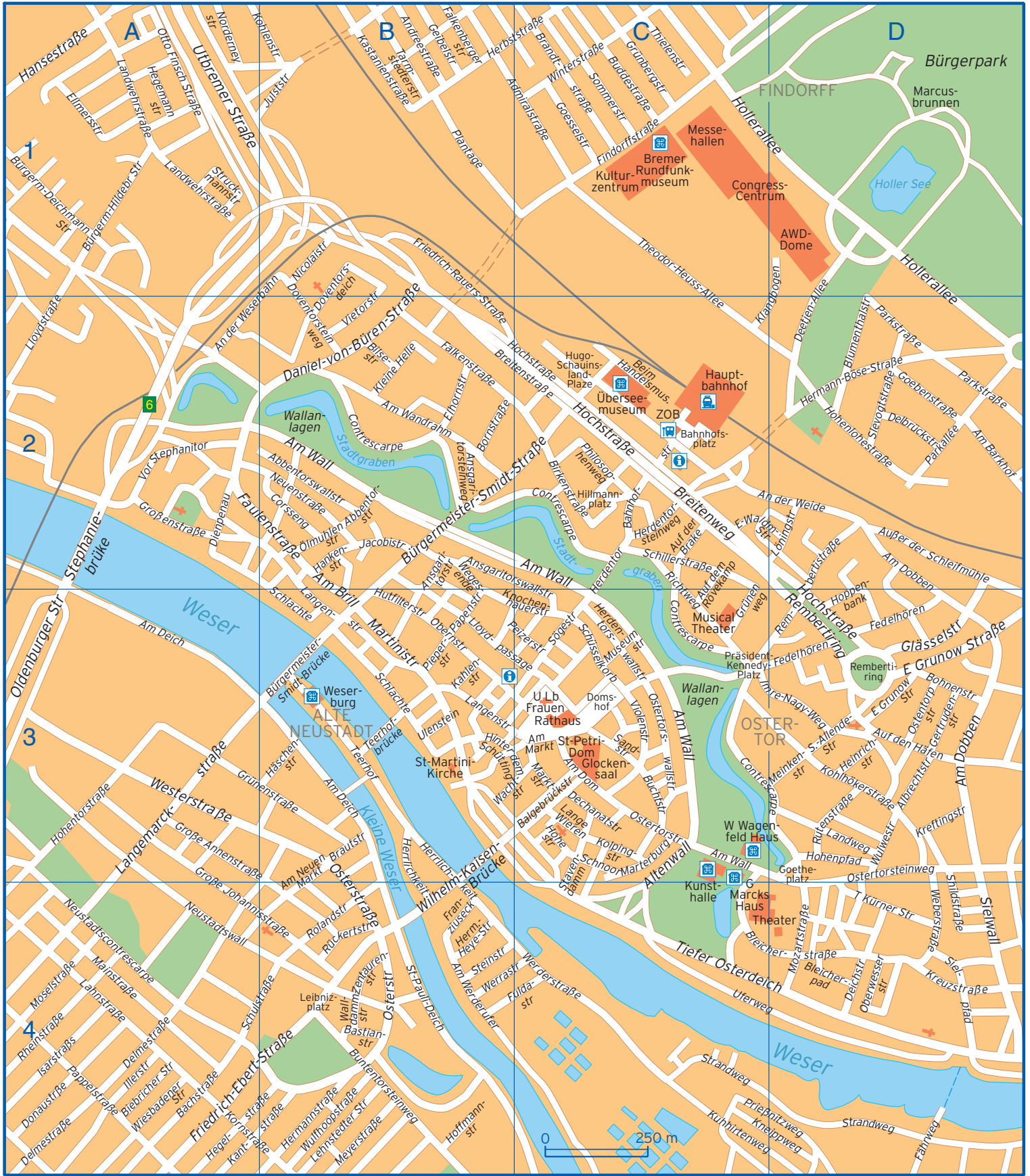
### **Tourist information**

Visit our website [www.bremen-tourism.de](http://www.bremen-tourism.de) or just give us a call +49 421 30 800 10.

Tourist information:

Böttcherstraße/Glockenspiel House at no. 4  
Mon-Fri 9.30am-6.30pm  
Sat 9.30 am-5pm  
Sun 10am-4pm

Main train station (Hauptbahnhof)  
Mon-Fri 9am-6.30pm  
Sat+Sun 9.30am-5pm



Abbentorstraße	B2	Corssengang	B2	Hermannstraße	B4
Abbentorswallstraße	B2	Daniel-von-Büren-Straße	B1 B2	Herrlichkeit	B3 B4
Admiralstraße	B1 C1	Dechanatstraße	C3	Hillmannplatz	C2
Albrechtstraße	D3	Deetjen-Allee	D1 D2	Hinter dem Schütting	B3 C3
Altenwall	C3 C4	Deichstraße	D4	Hochstraße	B2 C2 D2 D3
Am Barkhof	D2	Delbrückstraße	D2	Hoffmannstraße	B4
Am Deich	A3 B3	Delmestraße	A4	Hohe Straße	C3
Am Dobben	D2 D3	Dienpenau	A2	Hohenlohestraße	D2
Am Dom	C3	Domshof	C3	Hohenpfad	D3
Am Markt	C3	Donaustraße	A4	Hohentorstraße	A3
Am Neuen Markt	B3 B4	Doventorsdeich	B1 B2	Hollerallee	C1 D1 D2
Am Wall	B2 C2 C3	Doventorsteinweg	B1 B2	Hoppenbank	D2 D3
Am Wandrahm	B2	E Grunow Straße	D3	Hugo-Schauinsland-Plaze	C2
Am Werderufer	B4	Elhornstraße	B2	Hutfilterstraße	B3
An der Weide	C2 D2	Ellmersstraße	A1	Häschenstraße	B3
An der Weserbahn	A2 B1	Emil-Waldmann-Straße	C2 D2	Illerstraße	A4
Andreestraße	B1	Falkenbergerstraße	B1	Imre-Nagy-Weg	C3 D3
Ansgaritorsteinweg	B2	Falkenstraße	B2	Isarstraß	A4
Ansgaritorstraße	B2 B3	Faulenstraße	A2 B2	Jacobistraße	B2
Ansgaritorswallstraße	B2 C3	Fedelhören	D3	Julststraße	B1
Auf dem Rövekamp	C2 C3	Findorffstraße	C1	Kahlenstraße	B3
Auf den Häfen	D3	Franziuseck	B4	Kantstraße	A4 B4
Auf der Brake	C2	Friedrich-Ebert-Straße	A4 B4	Kastanienstraße	B1
Außer der Schleifmühle	D2	Friedrich-Rauers-Straße	B1 B2	Klangbogen	C2 D1
Bachstraße	A4	Fuldastraße	B4 C4	Kleine Helle	B2
Bahnhofplatz	C2	Fährweg	D4	Kneippweg	C4 D4
Bahnhofstraße	C2	Geibelstraße	B1	Knochenhauerstraße	B3 C3
Balgebrückstraße	C3	Gertrudenstraße	D3	Kohlenstraße	A1 B1
Bastianstraße	B4	Glässelstraße	D3	Kohlhökerstraße	D3
Beim Handelsmuseum	C2	Goebenstraße	D2	Kolpingstraße	C3
Bilsestraße	B2	Goesselstraße	C1	Kornstraße	A4 B4
Birkenstraße	C2	Goetheplatz	D3	Kreftingstraße	D3
Bleicherpad	D4	Große Annenstraße	A3 B3	Kreuzstraße	D4
Bleicherstraße	C4 D4	Große Johannisstraße	A3 B4	Kuhhirtenweg	C4
Blumenthalstraße	D2	Großenstraße	A2	Lahnstraße	A4
Bohnenstraße	D3	Grünbergstraße	C1	Landweg	D3
Bornstraße	B2	Grünenstraße	A3 B3	Landwehrstraße	A1
Brandtstraße	C1	Grünenweg	C2 C3	Lange Wieren	C3
Brautstraße	B3	Hankenstraße	B2	Langemarckstraße	A3
Breitenstraße	B2 C2	Hansestraße	A1	Langenstraße	B3
Breitenweg	C2	Hegelstraße	A4 B4	Lehnstedter Straße	B4
Buchtstraße	C3	Hegemannstraße	A1	Leibnizplatz	B4
Buddestraße	C1	Heinrichstraße	D3	Lloydpassage	B3 C3
Buntentorsteinweg	B4	Herbststraße	B1 C1	Lloydstraße	A2
Bürgerm-Deichmann Straße	A1	Herdentor	C2 C3	Löningstraße	D2
Bürgermeister-Hildebrand Straße	A1	Herdentorsteinweg	C2	Mainstraße	A4
Bürgermeister-Smidt-Brücke	B3	Herdentorswallstraße	C3	Marktstraße	C3
Bürgermeister-Smidt-Straße	B2 C2	Hermann-Böse-Straße	D2	Marterburg	C3
Contrescarpe	B2 C2 C3 D3	Hermann-Heye-Straße	B4	Martinistraße	B3

Meinkenstraße	D3	Präsident-Kennedy-Platz	C3 D3	T Kürner Straße	D4
Meyerstraße	B4	Rembertiring	D3	Tarmstedterstraße	B1
Moselstraße	A4	Rembertistraße	D2 D3	Teerhof	B3
Mozartstraße	D4	Rheinstraße	A4	Teerhofbrücke	B3
Museumstraße	C3	Richtweg	C2 C3	Theodor-Heuss-Allee	C1 C2
Neuenstraße	B2	Rolandstraße	B4	Thielenstraße	C1
Neustadtscontrescarpe	A4	Rutenstraße	D3	Tiefer Osterdeich	C4 D4
Neustadtswall	A4	Rückertstraße	B4	Uferweg	C4 D4
Nicolaistraße	B1	Salvador-Allende-Straße	D3	Ulenstein	B3
Norderneystraße	A1	Sandstraße	C3	Utbremer Straße	A1
Obernstraße	B3	Schillerstraße	C2	Vietorstraße	B1 B2
Oberwesserstraße	D4	Schlachte	B3	Violenstraße	C3
Oldenburger Straße	A3	Schnoor	C3	Vor Stephanitor	A2
Ostentorpstraße	D3	Schulstraße	A4 B4	Wachtstraße	B3 C3
Osterstraße	B3 B4	Schüsselkorb	C3	Walldammstraße	B4
Ostertorsteinweg	D3 D4	Shildstraße	D3 D4	Weberstraße	D4
Ostertorstraße	C3	Sielpfad	D4	Wegesende	B2 B3
Ostertorswallstraße	C3	Sielwall	D4	Werderstraße	C4
Otto Finsch Straße	A1	Slevogtstraße	D2	Werrastraße	B4 C4
Papenstraße	B3	Sommerstraße	C1	Westerstraße	A3
Pappelstraße	A4	St-Pauli-Deich	B4	Wiesbadener Straße	A4
Parkallée	D2	Stavendamm	C3 C4	Wilhelm-Kaisen-Brücke	B3 B4
Parkstraße	D2	Steinstraße	B4	Winterstraße	C1
Peizerstraße	B3 C3	Stephaniebrücke	A2	Wulfooopstraße	B4
Philosophenweg	C2	Strandweg	C4 D4	Wulwestraße	D3
Pieperstraße	B3	Struckmannstraße	A1	Zentaurenstraße	B4
Plantage	B1	Sögestraße	C3	Ölmühlenstraße	B2
Prießnitzweg	C4 D4				