



# Garmisch-Partenkirchen

in collaboration with Garmisch-Partenkirchen Tourismus

Photo: ©Markt Garmisch-Partenkirchen - Christian Stadler



©Markt Garmisch-Partenkirchen

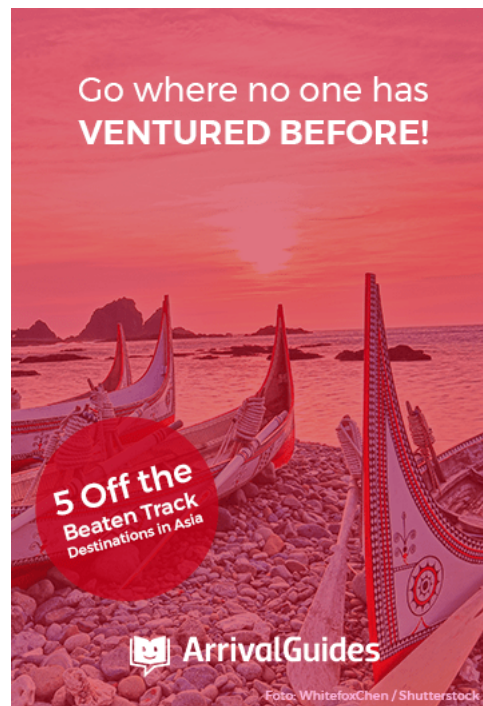
“Discover your true nature“: This motto is the central philosophy encompassing the tourist attractions offered at the renowned holiday destination of Garmisch-Partenkirchen all year round. In the midst of beautiful mountain views, the most famous town of the Bavarian Alps offers a wide variety of topnotch holidays. At the foot of Mount Zugspitze, nature is aImpressive, historic facades and lovingly painted houses are splendid and the charming inhabitants give the town its atmosphere.



©Martin Gulbe



©Martin Gulbe



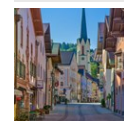
Go where no one has  
**VENTURED BEFORE!**

5 Off the  
Beaten Track  
Destinations in Asia

**ArrivalGuides**

Foto: WhitefoxChen / Shutterstock

## Top 5



**Historic Partenkirchen**  
Walking through the Historic Centre of Partenkirchen, each step leads you fu...



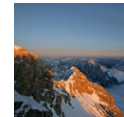
**Historic Garmisch**  
There is much to discover in Historic Garmisch. Walk along Frühlingsstraße a...



**Olympic Ski Jump**  
Defy gravity and fly... - athletes starting from the new Olympic Ski Jump can ...



**AlpspiX**  
On top of the of Mount Osterfeldkopf. You can experience fresh air, breatht...



**Mount Zugspitze**  
The great view about four countries (Germany, Austria, Switzerland, Italy) t...



## THE CITY



©Markt Garmisch-Partenkirchen - Marc Hohenleitner

Absolutely unique: Garmisch-Partenkirchen is the epitome of vast and pristine alpine nature. It is a unique place in an awesome setting where outdoor activities are extraordinary experiences – between mountain and valley, in the water or in the air. It is a region that has shaped human beings and their culture. Here, you still find typical Bavarian traditions in their original form. A place where you get closer to nature and discover something about yourself.

### Healthy + Active



Healthy air, a relaxed atmosphere, actions and a marvelous location - Garmisch-Partenkirchen is a place to unwind, get healthy and have lots of activities.

And even more: You can improve your health in a targeted and sustained manner. Thanks to its especially advantageous climate and the continuous good quality of the air, Garmisch-Partenkirchen is one of the 15 premium class health resorts with a healing atmosphere.

Address: 82467 Garmisch-Partenkirchen, von-Brug-Straße 24  
Phone: +498821 - 180 7736  
More Info: [www.gapa.de/Garmisch\\_Parttenkirchen\\_Health\\_Wellbeing\\_Healthy-active](http://www.gapa.de/Garmisch_Parttenkirchen_Health_Wellbeing_Healthy-active)

## Meteoropathy



When the weather starts to play up... ..many of us feel downright sick. But what can you do if the body no longer adapts to the respective climate on its own? The combination of stamina training and thermo regulation training can cure meteoropathic people from their symptoms in the long run if it is practised regularly and integrated into everyday life. And this is exactly what we offer here in Garmisch-Partenkirchen.

Address: 82467 Garmisch-Partenkirchen, von-Brug-Straße 24  
Phone: +498821 - 180 7736  
More Info: [www.gapa.de/page/node/346](http://www.gapa.de/page/node/346)

## Climatic cure



Take a deep breath - and hike on! The gentle movements, the pure air and the marvellous atmosphere - all this is good for you. Really good! No wonder: You are in Garmisch-Partenkirchen, one of Germany's top 15 spa resorts with a healing climate and "health region of Bavaria". However, pure air is not all we have to offer. When you come here for a cure, a programme awaits you that is specially designed for you to get fit.

Address: 82467 Garmisch-Partenkirchen, von-Brug-Straße 24  
Phone: +498821 - 180 7736  
More Info: [www.gapa.de/Garmisch\\_Parttenkirchen\\_Health\\_Wellbeing\\_climatic\\_cure](http://www.gapa.de/Garmisch_Parttenkirchen_Health_Wellbeing_climatic_cure)

## Wellness



Simply feel good! This is easy in Garmisch-Partenkirchen: well-being has a long tradition. Fitness for the body, balm for the soul,

relaxation for the spirit - all this is a health holiday in Garmisch-Partenkirchen. The effect lasts for weeks!

We have the right recipe for you: Relaxation in one of the spacious wellness oases. Experienced therapists and professional trainers will pamper you with classic massages, pleasant baths or soothing packs.

Address: 82467 Garmisch-Partenkirchen, von-Brug-Straße 24  
Phone: +498821 - 180 7736

More Info: [www.gapa.de/Garmisch\\_Parttenkirchen\\_Health\\_Wellbeing\\_wellness](http://www.gapa.de/Garmisch_Parttenkirchen_Health_Wellbeing_wellness)

## Health Corner



A novelty in Garmisch-Partenkirchen: The health corner "Healthy by Nature", a meeting point for health issues, was created for

guests and locals.

In the new and barrier-free service centre, our team of medically trained health guides are pleased to give you individual advice.

Additionally, mountain guides or physiotherapists share their expert knowledge for free.

Enjoy your visit in the health corner with a cup of tea - for free, too.

Address: 82467 Garmisch-Partenkirchen, von-Brug-Straße 24  
Phone: +498821 - 180 7736  
Internet: [www.gapa.de/health\\_corner](http://www.gapa.de/health_corner)

## Holidays and Modern Medicine



You can do more for your health - even in your holidays! Purposefully and individually. In Garmisch-Partenkirchen, you can perfectly

combine recreational holidays with medical treatments. Everything is possible from health care to the treatment of acute and chronic diseases as well as rehabilitation measures. In this context, you will benefit from the physicians and therapists' extensive experience in our clinics and medical practices.

Address: 82467 Garmisch-Partenkirchen, von-Brug-Straße 24  
Phone: +498821 - 180 7736  
Internet: [www.gapa.de/Holidays\\_modern\\_medicine](http://www.gapa.de/Holidays_modern_medicine)

## Health and promotion



"Health is not everything, but without health, everything is nothing". Arthur Schopenhauer realised this as early as at the beginning of the 19th

century, and this has not changed up until now. Here, in Garmisch-Partenkirchen, there are experts who offer innovative concepts which measurably improve the health and performance conditions. So, you have the chance to get fit and stay healthy.

Address: 82467 Garmisch-Partenkirchen, von-Brug-Straße 24  
Phone: +498821 - 180 7736  
Internet: [www.gapa.de/page/node/386](http://www.gapa.de/page/node/386)

## TOP 5



Markt Garmisch-Partenkirchen

A stroll through streets like Frühlingsstraße in Garmisch or the Historical Ludwigstraße in Partenkirchen makes tradition come alive. The so-called Lüftlmalereien, magnificent facade paintings, tell you stories about the houses' inhabitants, the region and its customs, so that even non-German speaking visitors understand - without explanation of a guide. The locals greet guests with openness, lust for life and their Bavarian charm.

### Historic Partenkirchen



Walking through the Historic Centre of Partenkirchen, each step leads you further into long ago times. Follow the tracks of the fresco painter Heinrich Bickel who decorated the „Fraundorfer“ Inn at Ludwigstraße with a gorgeous typical country wedding. Nearby, you will also find the local Werdenfels Museum. Miraculously, the former merchant's building was not impaired by the Big Blaze of 1865. Nowadays, history and ancient customs of the Werdenfels Region are exhibited in the five-storied house.

Photo: Markt Garmisch-Partenkirchen

Address: 82467 Garmisch-Partenkirchen, Ludwigstraße  
Internet: [www.gapa.de/Historisches\\_Parttenkirchen](http://www.gapa.de/Historisches_Parttenkirchen)

### Historic Garmisch



There is much to discover in Historic Garmisch. Walk along Frühlingsstraße and the nearby alleys and listen to the histories told by the famous "Lüftl" paintings on the houses' facades, in which you will understand them even if you do not know any Bavarian.

A nice detour leads you to the "Alte Kirche" (Old Church), which is a nice Romanesque-Gothic church dating back to the 13th century.

Photo: Markt Garmisch-Partenkirchen

Address: 82467 Garmisch-Partenkirchen, Frühlingsstraße  
Internet: [www.gapa.de/Historisches\\_Garmisch](http://www.gapa.de/Historisches_Garmisch)

### Olympic Ski Jump



Defy gravity and fly... - athletes starting from the new Olympic Ski Jump can live out this dream. For a short moment, at least. A guided tour to the Ski Jump at Mount Gudiberg introduces you to the world of these fearless jumpers. It is in this way that you can discover a field that you otherwise only know from sports broadcasts, such as from the famous Four Hills Tournament, for example.

Photo: Markt Garmisch-Partenkirchen

Address: 82467 Garmisch-Partenkirchen,  
Karl-u.-Martin-Neuner-Platz

Phone: +49 8821 180 700

Internet: [www.gapa.de/Olympia-Skisprungschanze](http://www.gapa.de/Olympia-Skisprungschanze)

## AlpspiX



On top of the of Mount Osterfeldkopf. You can experience fresh air, breathtaking views, and the magnificent panorama. You can enjoy being on your own: watching mighty summits, and the vastness of it all.

The AlpspiX is about 50 metres above the top station of the Alpstizbahn Gondola. There are two steel platforms, both 13 metres long which cantilever over the abyss.

Photo: Markt Garmisch-Partenkirchen

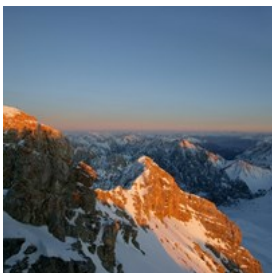
Address: 82467 Garmisch-Partenkirchen, Olympiastraße 27

Phone: +498821 797-0

Internet:

[zugspitze.de/de/sommer/berge/garmisch-classic/alpspix](http://zugspitze.de/de/sommer/berge/garmisch-classic/alpspix)

## Mount Zugspitze



The great view about four countries (Germany, Austria, Switzerland, Italy) takes your breath away. The air is pure and the panorama seems to

be endless.

When you experience this, you are on top of Germany's highest mountain. You are on top of Mount Zugspitze, at a height of nearly 3000 metres! Due to its natural and rough beauty, Mount Zugspitze is a year-round impressive experience.

Photo: Markt Garmisch-Partenkirchen

Address: 82467 Garmisch-Partenkirchen

Phone: +49 8821 797-0

More Info: [www.gapa.de](http://www.gapa.de)

## EVENTS



*Markt Garmisch-Partenkirchen*

Enjoy movement, feel your own power, savour every moment - upon flower-lined mountain paths as well as in the fresh powder snow: As one of the most well-known outdoor destinations in the Alps, Garmisch-Partenkirchen offers the right way for every guest to storm his personal athletic peaks. No matter whether in the mountains, by bike, skis or snowshoes, there is something for everone.

And there is even more, for example the BMW Motorrad Days and Bavarian "Festwochen".

## DO & SEE



*Markt Garmisch-Partenkirchen*

The people that live here are envied by many; those that spend their holidays here even more so. Garmisch-Partenkirchen will really move you - with its unspoilt and pure nature, vibrancy and Bavarian charm.

First of all, you'll be overwhelmed by the mountains, nature and the breathtaking

panorama. Next, the local people will win you over with their kindness, openness and honesty. And finally, you'll take unforgettable moments, memories and experiences with you. Outdoors: do sports or just relaxing.

### Hiking

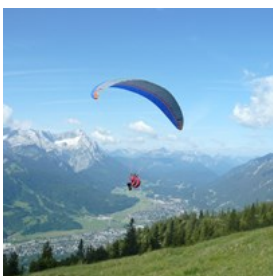


Experience the pure nature of the Alps. The rugged mountain ranges, the crystal-clear streams and the deep blue lakes. Wild and real, gentle and calm.

Garmisch-Partenkirchen is one of the most charming landscapes in Bavaria and a great Region for hiking. Over 300 kilometres of marked footpaths invite you to discover the beautiful world of the Alps and promise special moments.

Internet: [www.gapa.de/Sport\\_Erlebnis\\_Wandern.html](http://www.gapa.de/Sport_Erlebnis_Wandern.html)  
More Info: Tourist Information, Richard-Strauss-Platz 2, 82467 Garmisch-Partenkirchen

### Paragliding



You like adventures? You like absolut great views? Then try Paragliding! It is one of the most exciting experiences and here, in Garmisch-Partenkirchen,

you have the chance to make this great experience and you will enjoy the fantastic bird-eye views.

Photo: Markt Garmisch-Partenkirchen  
Address: Am Kreuzbahnhof 12 a, Garmisch-Partenkirchen  
Opening hours: 8:30 - 16:30  
Phone: + 49 8821 1843986  
Internet: [www.fly-garmisch.com/](http://www.fly-garmisch.com/)  
Email: [info@fly-garmisch.com](mailto:info@fly-garmisch.com)  
More Info: [www.gapa.de](http://www.gapa.de)

### Cycling & Mountain biking



No matter whether you are a professional cyclist, mountain biker or a passionate amateur cyclist, everyone will find his or her favourite route

around Garmisch-Partenkirchen. Our routes offer a perfect combination of sport and recreation. More than a dozen mountain bike routes are waiting for you and your bike/s!

Photo: Markt Garmisch-Partenkirchen  
Internet: [www.gapa.de/Radfahren+Biken](http://www.gapa.de/Radfahren+Biken)

### Family



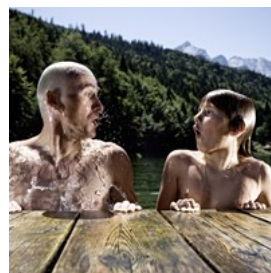
Holidays at Garmisch-Partenkirchen are adventure holidays. Our town offers lots of activities for families. From ice-skating

(<http://www.gapa.de/Eissport>) to cycling, from climbing im "Kletterwald" (<http://kletterwald-gap.de/>) to the Alpispitz Wellenbad wave pool (<http://www.gemeindewerk-e-garmisch-partenkirchen.de/alpispitz-wellenbad>)

Garmisch-Partenkirchen is not just a destination for sports, but also for families.

Photo: Markt Garmisch-Partenkirchen  
Internet: [www.gapa.de/Sport-Erlebnis\\_Sommer\\_Familie](http://www.gapa.de/Sport-Erlebnis_Sommer_Familie)

### Water Sports



At Garmisch-Partenkirchen all swimmers and lovers of water get their money's worth.

Numerous lakes nearby, such as Pfliegersee, Riessersee, Geroldsee or

Eibsee invite you to take the plunge, dive in and dive down.

When the weather is really bad and cold, you don't have to be without swimming, you can visit the Alpsee-Wellenbad Wave Pool Center.

Internet: [www.gapa.de/Wassersport](http://www.gapa.de/Wassersport)

## Skiing + Snowboarding

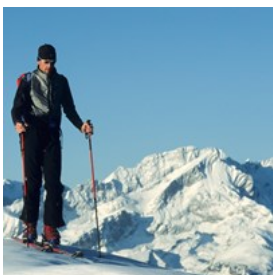


You love skiing, snowboarding, carving or freestyle skiing. Then, Garmisch-Partenkirchen is the right place for you.

Germany's top winter sports resort has much to offer. Here, you will find conditions making your heart beat faster: more than 60 km of skiing slopes offering perfect snow from November to May. Well-prepared slopes ranging from easy to demanding, and modern lift facilities. Beautiful views in an area with cosy ski huts.

Internet: [http://www.gapa.de/Sport\\_Erlebnis\\_Winter\\_Skifahren\\_Snowboarden.html](http://www.gapa.de/Sport_Erlebnis_Winter_Skifahren_Snowboarden.html)

## Skiing tours

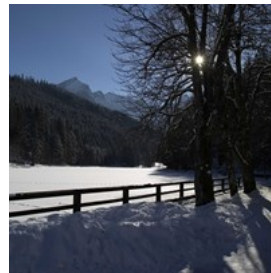


Slowly climb the mountain with your skis. Step by step. The ascent is exhausting, but you enjoy every moment. You are also looking forward

to the one thing that makes you moving on: free downhill skiing into the valley. The calm and silence are quite marvellous, in which you can hear nothing but the snow crunching under your feet and your own breathing. Only a few more metres to go and you have made it. On the summit, your efforts will be rewarded with the great view over Garmisch-Partenkirchen.

Internet: <http://www.gapa.de/Skitouren>

## Tobogganing



Your face is covered with snow, you have clumps of ice in your hair and all the excitement has made your cheeks red - often, tobogganing is a real

adventure. Being an enthusiastic tobogganing fan, you love speeding downhill like the famous German luger Georg Hackl, called "Hackl Schorsch". And you are right! Your courage is rewarded with a very special and intense feeling of happiness. On track for the next speedy ride!

Photo: Markt Garmisch-Partenkirchen

Internet: <http://www.gapa.de/Rodeln>

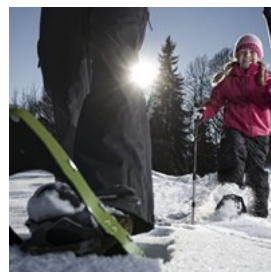
## Ice Sports

In Garmisch-Partenkirchen, you can even enjoy a hobby in an Olympic atmosphere: in our Olympic Ice Sports Centre. Originally, it was built for the 1936 Winter Olympics, it nowadays is a true highlight and the perfect setting for competition, shows and entertainment - not just in the winter, but also in the summer.

Address: 82467 Garmisch-Partenkirchen, Am Eisstadion 1

Internet: [www.gapa.de/Eissport](http://www.gapa.de/Eissport)

## Snowshoeing



No matter whether you are a beginner or a skilled snowshoe hiker - everyone finds his or her personal favourite tour here in the extensive

winter hiking trails around Garmisch-Partenkirchen. Head out on your own, as a couple or in a group. The Health-Corner in Garmisch-Partenkirchen offers guided hikes.

Photo: Markt Garmisch-Partenkirchen

Address: Von-Brug-Straße 1, 82467 Garmisch-Partenkirchen

Phone: + 49 8821 1807736

Internet: [http://www.gapa.de/Garmisch-Partenkirchen\\_Sport-Adventure\\_Winter\\_Snowshoeing](http://www.gapa.de/Garmisch-Partenkirchen_Sport-Adventure_Winter_Snowshoeing)

Email: [gesundheitseck@gapa.de](mailto:gesundheitseck@gapa.de)

## Winterhiking



You like hiking and you don't care if it is summer or winter? Then you are right here, in Garmisch-Partenkirchen.

In the winter you can experience the silent nature of winter. 110 kilometres of cleared hiking trails invite you to wander, relax and enjoy the snow covered landscape.

By the way: the Health-Corner offers also guided tours.

Address: Von-Brug-Straße 1, 82467 Garmisch-Partenkirchen

Phone: + 49 8821 1807736

Internet: [www.gapa.de/Winterwandern](http://www.gapa.de/Winterwandern)

Email: [gesundheitseck@gapa.de](mailto:gesundheitseck@gapa.de)

## Little Theatre

Fritz Rohrbeck, director and founder of the Kleines Theater, felt drawn to the stage ever since he was a boy. After discovering the town of Garmisch-Partenkirchen he decided to start a theatre here, and thus the "Little Theatre" was born. The theatre is now managed by the 3rd generation of the family; its productions regularly delight audiences with their care and attention to detail.

Address: Am Richard Strauss Platz, 82467

Garmisch-Partenkirchen

Internet: <http://www.kleinstheater.de/>

More Info: [http://www.gapa.de/Garmisch\\_Parttenkirchen\\_Art+Culture\\_Theatre\\_Concert](http://www.gapa.de/Garmisch_Parttenkirchen_Art+Culture_Theatre_Concert)

## Churches



There are very much old churches in and around Garmisch-Partenkirchen which are worth a visit. For example, there's the Sebastianskircherl. In

former times, the ground around this chapel served as cemetery for the victims of the Black Death.

If you want more information about churches in Garmisch-Partenkirchen, visit our website: [http://www.gapa.de/Town\\_Region\\_Art\\_Culture\\_Churches.html](http://www.gapa.de/Town_Region_Art_Culture_Churches.html)

Photo: Markt Garmisch-Partenkirchen

Address: Ludwigsstraße 81, 82467 Garmisch-Partenkirchen

Internet: [http://www.gapa.de/Garmisch-Partenkirchen\\_Town+Region\\_Art+Culture\\_Churches](http://www.gapa.de/Garmisch-Partenkirchen_Town+Region_Art+Culture_Churches)

## Aschenbrenner Museum



The founder of the Aschenbrenner Museum, Marianne Aschenbrenner, was born in 1928 in Düsseldorf. She told, that once she got a book about

porcelain - and she was stoked. Now you can admire this special art: porcelain, which was called 'White Gold' in the 18th century, puppets and much more.

Photo: Markt Garmisch-Partenkirchen

Address: Loisachstraße 44, 82467 Garmisch-Partenkirchen

Opening hours: Tuesday - Sunday: 11:00 - 17:00

Phone: +49 8821 7307105

Internet: <http://www.museum-aschenbrenner.de/>

Email: [mail@museum-aschenbrenner.de](mailto:mail@museum-aschenbrenner.de)



## Kurhaus



Have you ever heard of Jim Knopf? Momo and the Grey Men? The Neverending Story? The author of these very famous books was

Michael Ende. He has lived in Garmisch-Partenkirchen and now you can visit an exhibition which has his name. This collection is very exciting, not just for kids, even for adults.

Photo: Markt Garmisch-Partenkirchen

Address: Fürstenstraße 14, 82467 Garmisch-Partenkirchen

Opening hours: Tuesday - Sunday: 14:00 - 18:00

Phone: +49 8821 180790

More Info: [http://www.gapa.de/Garmisch-Partenkirchen\\_Sights\\_Michael-Ende-Kurpark](http://www.gapa.de/Garmisch-Partenkirchen_Sights_Michael-Ende-Kurpark)

## DINING



Markt Garmisch-Partenkirchen

You've been hiking for four hours - up ahead you see a rustic mountain lodge. All you want is a hearty meal.

It's good when you're in Garmisch-Partenkirchen. We offer also national and international cuisine: from a hearty Bavarian meal to an exotic 5 course meal, from a little snack to a healthy whole-food cuisine. Something for every taste

[http://www.gapa.de/gastro\\_nightlife](http://www.gapa.de/gastro_nightlife)

## Gasthof Fraundorfer

In the town centre of Partenkirchen, near to the church of the Historic Ludwigsstraße, you can find the Gasthof Fraundorfer. The Fraundorfer Family has been welcoming, hosting and entertaining their guests for over 100 years! The authentic Bavarian cuisine in this inn may be one reason, why guests love this restaurant. Their excellent meals are prepared from scratch.

Address: Ludwigstraße 24, 82467 Garmisch-Partenkirchen

Opening hours: Monday - Sunday 07.00 am - 01.00 pm,

Wednesday from 05.00 pm

Phone: + 49 8821 9270

Internet: [www.gasthof-fraundorfer.de](http://www.gasthof-fraundorfer.de)

Email: [fraundorfer@gaponline.de](mailto:fraundorfer@gaponline.de)

More Info: [www.gapa.de](http://www.gapa.de)

## Restaurant Werdenfelser Hof

In Garmisch-Partenkirchen coziness is important - like everywhere in Bavaria. And in the Gasthof Werdenfelser Hof, an inn, you can discover it. The building of the 18th century has a special charm, so that everybody feels straightaway good. In the restaurant you'll find both Bavarian and international cuisine. There's definitely something for everybody's taste.

Address: Ludwigstraße 58, Garmisch-Partenkirchen

Opening hours: Monday - Sunday 09.00 am - 01.00 pm

Phone: 08821/3621

Internet: [www.werdenfelser-hof.de](http://www.werdenfelser-hof.de)

Email: [info@werdenfelser-hof.de](mailto:info@werdenfelser-hof.de)

More Info: [www.gapa.de](http://www.gapa.de)

## Bräustüberl

Cockle stove, comfortable interior decoration with Bavarian flair, Beergarden, good and solid Bavarian cuisine - shortly: the perfect Bavarian inn.

And if you would like to have a private celebration there, like an anniversary, the innkeepers are quite prepared to assisting you!

Address: 82467 Garmisch-Partenkirchen, Fürstenstraße 23  
Opening hours: Monday - Sunday 10.00 am - 01.00 am  
Phone: +49 8821 2312  
Internet: [www.braeustueberl-garmisch.de](http://www.braeustueberl-garmisch.de)  
Email: [info@braeustueberl-garmisch.de](mailto:info@braeustueberl-garmisch.de)  
More Info: [www.gapa.de](http://www.gapa.de)

### **Berggasthof Panorama**

This down-to-earth typical Bavarian is family-run inn - located slightly above Garmisch-Partenkirchen. The Restaurant and the (sun) terrace offer panoramic views to the town all-year. The meals are seasonal and first-class prepared. The Rooms are in Alpine style combined with high residential comfort.

Address: 82467 Garmisch-Partenkirchen, St. Anton 3  
Phone: +49 8821 9669070  
Internet: [www.berggasthof-panorama.com](http://www.berggasthof-panorama.com)  
Email: [info@berggasthof-panorama.de](mailto:info@berggasthof-panorama.de)  
More Info: [www.gapa.de](http://www.gapa.de)

### **Hotel Königshof**

It doesn't matter, if you come to this 4\* hotel on business or for some well-earned vacation, you will always feel good there.  
91 rooms, newly opened SPA with 3 saunas and fitnesscenter. An excellent restaurant offering also regional products, And; newly designed bar and vinothèque. Enjoy your stay!

Address: 82467 Garmisch-Partenkirchen, St. Martinstr. 4  
Phone: +49 8821 91 40  
Internet: [www.hotel-koenigshof-garmisch.de](http://www.hotel-koenigshof-garmisch.de)  
More Info: [www.gapa.de](http://www.gapa.de)

### **Hotel Rheinischer Hof**

The Hotel Reinischer Hof is one of the most ecofriendly hotel you will find in Garmisch-Partenkirchen and it stands for a more efficient use of resources (water, heat, food, electricity and fossil fuels.)

Address: 82467 Garmisch-Partenkirchen, Zugspitzstraße 76  
Phone: +49 8821 9120

Internet: [www.rheinischerhof-garmisch.de](http://www.rheinischerhof-garmisch.de)  
Email: [info@rheinischerhof-garmisch.de](mailto:info@rheinischerhof-garmisch.de)  
More Info: [www.gapa.de](http://www.gapa.de)

### **Hotel Drei Mohren**

In one of the most traditional houses in Garmisch-Partenkirchen, the Hotel Gasthof Drei Mohren, a typical Bavarian inn, you can enjoy the peaceful scenery at the beergarden, in front of a great mountain view.

But the best is, the hotel is located in the oldest and most beautiful street, the Ludwigsstraße, which is a part of Historic Partenkirchen.

Address: 82467 Garmisch-Partenkirchen, Ludwigstraße 65  
Phone: +49 8821 9130  
Internet: [www.dreimohren.de](http://www.dreimohren.de)  
Email: [info@dreimohren.de](mailto:info@dreimohren.de)  
More Info: [www.gapa.de](http://www.gapa.de)

### **Hotel Alpengruß**

The informal family-run hotel is close to many sights in Garmisch-Partenkirchen. For example, the Olympic Ski jump is close enough to walk there. The hotel offers single rooms, double rooms, triples and quadruple rooms. If the weather is fine, you can go outside in the Biergarten for a beer or have dinner.

Address: 82467 Garmisch-Partenkirchen, Gehfeldstraße 10  
Phone: +49 8821 2616  
Internet: [www.hotel-alpengruss.de](http://www.hotel-alpengruss.de)  
Email: [info@hotel-alpengruss.de](mailto:info@hotel-alpengruss.de)  
More Info: [www.gapa.de](http://www.gapa.de)

### **Hotel Zugspitze**

Beautiful rooms and suites are offered at the Hotel Zugspitze, but also rooms for conferences, SPA & AlmWell and a Taiji School. This hotel is famous for the cuisine. There, only natural and especially regional products are used for the best meals you could ever wish.

Address: 82467 Garmisch-Partenkirchen, Klammstraße 19  
Phone: +49 8821 9010

Internet: [www.hotel-zugspitze.de](http://www.hotel-zugspitze.de)  
Email: [info@hotel-zugspitze.de](mailto:info@hotel-zugspitze.de)  
More Info: [www.gapa.de](http://www.gapa.de)

### **Hotel Garmischer Hof**

Close to the centre there's the cosy and friendly Hotel Garmischer Hof with over 50 rooms, a chef who only uses bio-products out of the region, and a Alpisana SPA, where you can relax perfectly.

Address: 82467 Garmisch-Partenkirchen, Chamonixstr. 10  
Phone: +49 8821 9110  
Internet: [www.garmischer-hof.de](http://www.garmischer-hof.de)  
Email: [hotel@garmischer-hof.de](mailto:hotel@garmischer-hof.de)  
More Info: [www.gapa.de](http://www.gapa.de)

### **Hotel & Gasthof Schatten**

Our house is located in the center of Partenkirchen, the oldest part of the town. You will feel soon familiar in our nice Hotel and enjoy its personal flavour.

The "Schatten" offers 20 guest rooms and 2 Suites.

The stylish rooms are equipped with satellite tv, direct dial telephone, safe, modem connection and hair- dryer.

All our rooms are non- smoking rooms.

Family rooms and rooms for disabled persons are available on request.

The hotel offers 22 parking spaces in the underground garage, an elevator, restaurant, a big saloon for private family celebrations and more.

Our house enjoys the quiet street and charm of a traditional Bavarian house with magnificent views of the mountains.

As a base to exploring the mountains its central position is ideal.

The restaurant combines warm atmosphere and modern country house style.

Come in and taste the exquisite creations of our head Chef, Martin Baudrexl.

We also have a beer garden , where you can enjoy a fresh beer in summer.

Every Tuesday and Saturday you can enjoy the spectacle in our restaurant with typical Bavarian music and our little Schuhplattler (Bavarian folk dance).

Address: 82467 Garmisch-Partenkirchen, Sonnenbergstraße 10-12  
Phone: +49 8821 9 43 08 90  
Internet: [www.hotel-schatten.de](http://www.hotel-schatten.de)  
Email: [info@hotel-schatten.de](mailto:info@hotel-schatten.de)  
More Info: [www.gapa.de](http://www.gapa.de)

### **Hotel Hausberg**

This comfortable, rustic 3 star hotel is located on a small silent hill outside the town centre. The partly rustic equipped suites, double rooms and single rooms invite to relax and enjoy the panorama. In the Restaurant, we will regale you not only with Bavarian 'Schmankerl' (specialities), but also with international cuisine.

Address: 82467 Garmisch-Partenkirchen,  
Phone: +49 8821 2204  
Internet: [www.hotel-hausberg.de](http://www.hotel-hausberg.de)  
Email: [info@hotel-hausberg.de](mailto:info@hotel-hausberg.de)  
More Info: [www.gapa.de](http://www.gapa.de)

### **Hotel Staudacherhof**

Staudacherhof is only 5 minutes walking distance from the centre of Garmisch. You will stay in one of the most beautiful houses of Garmisch, comfortable, leisurely-Bavarian yet exclusively homely.

The hotel offers a high recreational value: heated swimming pool, Sauna, tepidarium, laconium, steam sauna room and much more.

All rooms have been individually decorated with great care and love to detail and are equipped with bath/shower/WC, safe, colour TV, Satellite receiver, radio, telephone, High speed internet and mini bar and can be comfortably accessed via elevator. The hotel has 40 parking bays and 5

garages.

Address: 82467 Garmisch-Partenkirchen, Höllentalstraße 48  
 Phone: +49 8821 9290  
 Internet: [www.staudacherhof.de](http://www.staudacherhof.de)  
 Email: [info@staudacherhof.de](mailto:info@staudacherhof.de)  
 More Info: [www.gapa.de](http://www.gapa.de)

### **Atlas Posthotel**

The Atlas Posthotel has an history, which goes back over 300 years. It has always been a house of hospitality. Today, the hotel allures guests with its charm and friendly staff. In the Restaurant we await you with culinary specialties or with Bavarian meals.

Address: 82467 Garmisch-Partenkirchen, Marienplatz 12  
 Phone: +49 8821 70 90  
 Internet: [www.atlas-posthotel.com](http://www.atlas-posthotel.com)  
 Email: [info@atlas-posthotel.com](mailto:info@atlas-posthotel.com)  
 More Info: [www.gapa.de](http://www.gapa.de)

### **Gasthof Schweizerbartl**

Enjoy a culinary journey over the Alps - from Tyrol to Bavaria. Every meal will be an unforgettable experience which you never want to miss.

From the comfortable rooms you can have a look at the Mount Zugspitze, it's very impressive.

And if you love cross-country-skiing, you are at the perfect place, because just 100 metres from the inn there's a cross-country-ski-trail, said to be one of the best in Germany.

Address: 82467 Garmisch-Partenkirchen  
 Phone: +49 8821 3071  
 Internet: [www.schweizerbartl.de](http://www.schweizerbartl.de)  
 Email: [info@schweizerbartl.de](mailto:info@schweizerbartl.de)  
 More Info: [www.gapa.de](http://www.gapa.de)

## **BISTROS & CAFÉS**



*Markt Garmisch-Partenkirchen*

If you want to have a little snack, you will find little Cafés and Bistros. From delicacies like the famous Bavarian Schmankerl to cakes up to Italian Snacks, there is something for everybody's taste.

More Information visit:

[http://www.gapa.de/Gapa\\_Search\\_Gastronomy/](http://www.gapa.de/Gapa_Search_Gastronomy/)

### **Adlwärth Kurpark Café**

Address: 82467 Garmisch-Partenkirchen,  
 Richard-Strauss-Platz 1  
 Opening hours: Monday - Sunday 10.00 am - 18.00 pm ,  
 Summer 10.00 am - 10.00 pm  
 Phone: +49 8821 3177

### **Konditorei & Kaffeehaus Kröner**

In the last 80 years, the traditional café became a Meeting point for connoisseurs.

Inside the café there's place for 220 guests, In summer, there's place for 300 people and everybody can have a look at the great mountain view.

Whatever you want - breakfast, lunch, a selfmade cake - you'll be right in this café.

Address: 82467 Garmisch-Partenkirchen, Achenfeldstraße 1  
 Opening hours: Monday - Sunday 08.30 am - 06.30 pm  
 Summer: 08.30 am - 10.00 pm  
 Phone: +49 8821 3007

Internet: [www.kroenner.com](http://www.kroenner.com)

### **Café Pano**

In Café Pano, you will find food which is regional and seasonal. The food is made with love and care.

Regional bakers produce the bread, jam is made in a Bavarian manufactory.

You are vegan or vegetarian? No problem! You will find vegan and vegetarian food also.

Address: 82467 Garmisch-Partenkirchen, Am Kurpark 26

Opening hours: Monday - Friday 09.00 am - 07.00 pm;

Saturday 09.00 am - 06.00 pm

Phone: +49 8821 7 32 24 73

Internet: [www.pano.coop](http://www.pano.coop)

Email: [jeannette.reusch@pano.coop](mailto:jeannette.reusch@pano.coop)

### **Centro - Kaffeebar**

The Centro Kaffeebar is an offbeat Café in the centre of Garmisch, close to church/pedestrian zone. The unique interior design is a mixture between retro and modern. Free WLAN.

Address: 82467 Garmisch-Partenkirchen, Bankgasse 5

Opening hours: Tuesday - Friday 07.30 am - 06.00 pm

Saturday 09.00 am - 06.00 pm Sunday 10.00 am - 04.00 pm

Phone: +49 8821 708 73 32

Internet: [centro-kaffeebar.de](http://centro-kaffeebar.de)

Email: [info@centro-kaffeebar.de](mailto:info@centro-kaffeebar.de)

### **Qahwa**

Qahwa advertises to brew the most appropriate coffee of the town, as they use the best beans of Germany. Food/Snacks prepared daily with fresh regional products.

Address: 82467 Garmisch-Partenkirchen, Chamonixstraße 5

Opening hours: Monday - Saturday 09.00 am - 06.00 pm

Phone: +49 8821 9436642

Internet: [www.qahwa.info](http://www.qahwa.info)

Email: [coffee@qahwa.info](mailto:coffee@qahwa.info)

### **Thron Café-Konditorei-Restaurant**

Enjoy selfmade cakes and tortes in this

traditional, great café and taste the specialities like 'Prinzregententorte' or 'Baumkuchen'.

Or do you prefer handcrafted pralines? Or taste the 'Garmischer Schneebälle' (Garmisch's snowballs).

You see, you this café is something special, you won't ever forget.

Address: 82467 Garmisch-Partenkirchen, Marienplatz 13-15

Opening hours: Monday - Sunday 08.30 am - 06.30 pm;

Summer: 08.30 am - 09.00 pm

Phone: +49 8821 52260

Internet: [www.konditorei-thron.de](http://www.konditorei-thron.de)

Email: [cafe@konditorei-thron.de](mailto:cafe@konditorei-thron.de)

### **Café Magnifico**

You'd like to have a breakfast which is prepared with love and a coffee of the 'Wildkaffee' coffee roasters? Then, you are right in Cafe Magnifico. Lunch is also available: You can decide whether you want a big-sized-burger or a daily changing menu or sandwiches.

Address: 82467 Garmisch-Partenkirchen, Olympiastraße 3

Opening hours: Monday-Friday. 08.00 am - 06.00 pm

Saturday 09.00 am - 05.00 pm

Phone: +49 172 85 27 333

Internet: [www.magnifico-gap.de](http://www.magnifico-gap.de)

### **Hobi's Backstube**

Bakery and coffee shop. (Early) Breakfast. Tasty and fancy sorts of bread/rolls.

Address: 82467 Garmisch-Partenkirchen, Zugspitzstraße 2

Opening hours: Monday - Friday 05:30 am - 06:00 pm;

Saturday 05:30 am - 06:00 pm Sunday 7:00 am - 11:00 am

Phone: +49 8821 2727

Internet: [www.hobis-backstube.de](http://www.hobis-backstube.de)

Email: [hobis-backstube@t-online.de](mailto:hobis-backstube@t-online.de)

## BARS & NIGHTLIFE



You've had a wonderful day and enjoyed nature, fresh air and exercise. Now you're looking for the perfect way to end your perfect day. With a freshly tapped beer, a glass of wine or a cocktail. On your own, with that special someone or with friends. In a cosy pub, a bar, a nightclub or at the gaming table. Welcome to Garmisch-Partenkirchen's nightlife!

### Drunken Queen Bar

The oldest cave bar of Garmisch-Partenkirchen. Cocktail bar and Lounge. Private Darts room. Upon request: private functions.

Address: 82467 Garmisch-Partenkirchen, Bankgasse 5  
 Opening hours: Tuesday - Saturday from 11.00 pm to 05.00 a.m.  
 Phone: +49 171 56 55732  
 Internet: [drunkqueengap.wix.com](http://drunkqueengap.wix.com)  
 Email: [drunk.queen.gap@gmail.com](mailto:drunk.queen.gap@gmail.com)

### Peaches-Cocktailbar



and much more.

The Peaches Cocktailbar is one of the oldest and most well-known bars in Garmisch-Partenkirchen. The bar is famous for its cocktails, fancy drinks

Address: 82467 Garmisch-Partenkirchen, Marienplatz 17  
 Opening hours: 07.00 pm - 03.00 am

Phone: +498821 18727  
 Internet: [www.peaches.de](http://www.peaches.de)

### Pub 33

Typical cosy Pub: Darts, big-screen TV, opened daily, no closing day.  
 Snacks/Food served til 02.30 a.m.

Address: 82467 Garmisch-Partenkirchen, Klammstraße 12  
 Opening hours: Mo - Sunday, 05.00 p.m.-03.00 a.m.  
 Phone: +49 151 16517518  
 Internet: [www.pub33.de](http://www.pub33.de)  
 Email: [CMetsch@t-online.de](mailto:CMetsch@t-online.de)

### Sausalitos

Welcome at one of the best cocktail-bars at the foot of the Alps. Fantastic Cocktails and drinks as well as tasty food awaits you. Enjoy!

Address: 82467 Garmisch-Partenkirchen, Bahnhofstraße 25  
 Opening hours: 00.00 am - 01.00 pm Friday + Saturday 12.00 - 02.00 am  
 Phone: +49 8821 74589  
 Internet:  
[www.sausalitos.de/mein-sausalitos/garmischpartenkirchen](http://www.sausalitos.de/mein-sausalitos/garmischpartenkirchen)

### Club Music Cafe



Famous and fabulous - this is the Motto of the Club 'Music Cafe' in Garmisch-Partenkirchen. Up to 700 visitors can party there and the main

area holds 170 square metres.

The VIP-Lounge offers space for 150 people. We wish you lots of fun in the Club' Music Cafe'!

Address: 82467 Garmisch-Partenkirchen, Marienplatz 17  
 Opening hours: Friday + Saturday 10.00 pm - 03.00 am  
 Phone: +49 8821 18727  
 Internet: [www.musife.de](http://www.musife.de)

### Zirbelstub'n

Just 200 metres of the centre of Garmisch, there's the Zirbl Stube. It has always been a

comfortable pub for young and old.

Address: 82467 Garmisch-Partenkirchen, Promenadenstraße 2

Opening hours: 05.00 pm - 01.00 am Sunday 12.00 - 01.00 am

Phone: +49 8821 71671

Internet: [www.zirbel-stube.de](http://www.zirbel-stube.de)

Email: [zirbel@zirbel-stube.de](mailto:zirbel@zirbel-stube.de)

### Irish-Pub

The Irish Pub in Garmisch-Partenkirchen is famous for its atmosphere, the clientele from all over the World and the funny barkeeper. The pub holds a big sortiment of beer: from Guinness over Kilkenny, Strongbow to Becks. For many years now, there's live Music in this bar.

Address: 82467 Garmisch-Partenkirchen, Rathausplatz 8

Opening hours: Monday - Wednesday 04.00 pm - 01.00 am

Thursday 04.00 pm - 02.00 pm Fr-Sa 04.00 pm - 03.00 am

Sunday 02.00 pm - 01.00 am

Phone: +49 8821/3938

Internet: [www.theirishpub.de](http://www.theirishpub.de)

Email: [info@theirishpub.de](mailto:info@theirishpub.de)

### John's Club

John's Club: Cocktails & more

Address: 82467 Garmisch-Partenkirchen, Rathausplatz 7

Opening hours: Friday + Saturday 10.00 pm - 03.00 am

Phone: +49 8821/2400

Internet: [www.johns-club.de](http://www.johns-club.de)

Email: [info@johns-club.de](mailto:info@johns-club.de)

## SHOPPING



*Markt Garmisch-Partenkirchen*

You'll be surprised how much there is to choose from. On the one hand, high-quality traditional handcrafts - beautifully crafted Bavarian traditional costumes, for example. On the other, regional fashion and „Alpine Lifestyle“ - a young, individual style which is becoming increasingly popular.

Our tip: Take a stroll through the town and let yourself drift. Browse and shop your way through more than 450 stores - from traditional costume stores to designer boutiques.

### Sport Conrad

Garmisch-Partenkirchen's Sports #1. Here, you can buy nearly everything around sports, from clothes to skis and other equipment.

Address: 82467 Garmisch-Partenkirchen, Chamonixstraße 3-9

Opening hours: Monday - Friday: 09.30 am - 07.00 pm

Saturday: 09.30 am - 06.00 pm

Phone: +49 8821 732270

Internet: [www.sport-conrad.com/page/garmisch](http://www.sport-conrad.com/page/garmisch)

Email: [info@sport-conrad.de](mailto:info@sport-conrad.de)

### Kult

You'll find trendy and modern clothes, shoes, handbags and accessories in this fashion store.

Address: 82467 Garmisch-Partenkirchen, Chamonixstraße 6

Opening hours: Monday - Friday. 9.30 am - 06.30 pm

Saturday 9.30 am - 05.00 pm

Phone: +49 8821 / 32 31  
Internet: [www.kult-garmisch.de](http://www.kult-garmisch.de)

### **Buchwieser**

Another good address for buying trendy clothes.

Address: 82467 Garmisch-Partenkirchen, Chamonixstraße 4  
Opening hours: 09.30 am - 06.30 pm  
Phone: +49 8821 3239  
Internet: [www.buchwieser-mode.de](http://www.buchwieser-mode.de)  
Email: [buchwieser-mode@t-online.de](mailto:buchwieser-mode@t-online.de)

### **Grasegger Trachten- und Modehaus**



Do you want a 'Dirndl' or a 'Lederhose'? Then you're right at Grasegger. Here, you will find traditional clothes and accessories.

Address: 82467 Garmisch-Partenkirchen, Am Kurpark 8  
Opening hours: 09.15 am - 06.15 pm  
Phone: +49 8821 943000  
Internet: [www.grasegger.de](http://www.grasegger.de)  
Email: [info@grasegger.de](mailto:info@grasegger.de)

### **Hartenstein Karl GmbH & Co. KG Modehaus**

The Modehaus Hartenstein - a fashion store for customers who appreciate fine quality clothing and personal Service.

Address: 82467 Garmisch-Partenkirchen, Am Kurpark 6  
Opening hours: Monday - Saturday 09.30 am - 06.30 pm  
Phone: +49 8821 95600  
Internet: [www.modehaus-hartenstein.de](http://www.modehaus-hartenstein.de)

### **Mexx Mode**

Mexx Mode: a fashion store selling trendy clothes.

Address: 82467 Garmisch-Partenkirchen, Am Kurpark 11  
Opening hours: Monday - Friday 09.30 am 06.30 pm  
Phone: +49 8821 717 89  
Internet: [www.buchwieser-mode.de](http://www.buchwieser-mode.de)  
Email: [buchwieser-mode@t-online.de](mailto:buchwieser-mode@t-online.de)

### **ANGELIKA Exclusive Schuhmode**

If you want exclusive quality shoes, visit the ANGELIKA Exclusive Schuhmode.

Address: 82467 Garmisch-Partenkirchen, Am Kurpark 15  
Opening hours: Monday - Friday 09.30 am 06.30 pm,  
Saturday 09.30 am - 05.00 pm  
Phone: +49 8821 3313  
Internet: [www.buchwieser-mode.de](http://www.buchwieser-mode.de)  
Email: [buchwieser-mode@t-online.de](mailto:buchwieser-mode@t-online.de)

### **C & A Mode**

Favorable clothes for everyone - selfservice.

Address: 82467 Garmisch-Partenkirchen, Chamonixstraße 5  
Opening hours: Mo-Fr. 09.00 am - 08.00 pm Saturday 09.00 am - 06.00 pm  
Phone: +49 8821 9436076  
Internet: [www.c-und-a.de](http://www.c-und-a.de)  
Email: [www.service@CundA.de](mailto:www.service@CundA.de)

### **Esprit**

Exclusive and high quality clothes.

Address: 82467 Garmisch-Partenkirchen, Am Kurpark 21  
Opening hours: Monday. - Friday. 09.30 am - 06.30 pm Sa. 9.30 am - 05.00 pm  
Phone: +49 8821 73 06 73  
Internet: [www.buchwieser-mode.de](http://www.buchwieser-mode.de)  
Email: [buchwieser-mode@t-online.de](mailto:buchwieser-mode@t-online.de)

### **Kindermode Biermaier**

Here, you'll not only find clothes for sports, but also modern ones for adults and for kids.

Address: 82467 Garmisch-Partenkirchen, Hauptstraße 85  
Opening hours: Monday -Friday. 09.00 am - 06.00 pm  
Saturday 09.00 am - 04.00 pm  
Phone: + 49 8821 94 72 78  
Internet: [www.sportmode-biermaier.de](http://www.sportmode-biermaier.de)  
Email: [sportmode-biermaier@t-online.de](mailto:sportmode-biermaier@t-online.de)

### **Müller Josef Pelzhaus - Kürschnerei**

Peltmonger Store

Address: 82467 Garmisch-Partenkirchen, Jahnstraße 4  
Phone: +49 8821 3365



Internet: [www.pelz-mueller.de](http://www.pelz-mueller.de)  
Email: [post@pelz-mueller.de](mailto:post@pelz-mueller.de)

### **OSTLER Sportmode**

Fashion store: international/national designer brands in top Quality, sports Fashion. Excellent personal Service.

Address: 82467 Garmisch-Partenkirchen, Marienplatz 1-3  
Opening hours: Monday. - Friday. 9.30 am - 06.30 pm  
Saturday. 9.30 am- 04.00 pm  
Phone: +49 8821 95450  
Internet: [www.marienplatz1.de](http://www.marienplatz1.de)

### **Pelzmoden Lieder Horst**

Peltmonger Store

Address: 82467 Garmisch-Partenkirchen, Bahnhofstraße 44  
Opening hours: Monday - Friday 10:00 am - 00:30 pm, 02:30 am - 06:00 pm Saturday 10.00 am - 01.00 pm  
Phone: +49 8821 53348  
Internet: [www.pelzatelier-lieder.de](http://www.pelzatelier-lieder.de)

### **ROBE Boutique**

Address: 82467 Garmisch-Partenkirchen, Ludwigstraße 36  
Opening hours: Monday - Friday 10:00 am - 00:00 pm, 02:30 am - 06:00 pm Saturday 10.00 am - 01.00 pm  
Phone: +49 88 21 9 67 96 84

### **ROSENBLATT**

Designer brands.

Address: 82467 Garmisch-Partenkirchen, Olympiastraße 2  
Opening hours: Monday - Friday 10.00 am - 06.00 pm,  
Saturday 10:00 - 05:00 pm  
Phone: + 49 8821 73860  
Internet: [www.rosenblatt-garmisch.de](http://www.rosenblatt-garmisch.de)  
Email: [kontakt@rosenblatt-garmisch.de](mailto:kontakt@rosenblatt-garmisch.de)

### **Kindermoden Sand**

Clothes for Kids. Personal Service/advice

Address: 82467 Garmisch-Partenkirchen, Schnitzschulstraße 3  
Phone: +49 88 21 5 58 88

Internet: [www.kindermoden-sand.de](http://www.kindermoden-sand.de)  
Email: [info@kindermoden-sand.de](mailto:info@kindermoden-sand.de)

### **SARA BONI Italienische Damenmode**

Latest Italian Fashion Cloth for women - from small to XX-large. Personal Service.

Address: 82467 Garmisch-Partenkirchen, Bahnhofstraße 44  
Phone: +49 88 21 90 89 68

### **Schäffler Damenmode**

Beautiful outfits for women.

Address: 82467 Garmisch-Partenkirchen, Am Kurpark 29  
Phone: +49 8821 4461

### **Benewitz Pelzfachgeschäft**

Peltmonger Store

Address: 82467 Garmisch-Partenkirchen, Von-Brug-Str. 22  
Phone: +49 88 21 5 01 80

### **Bimo's Kinderladen**

Kid's Fashion with personal Service. If you are looking for something unique.

Address: 82467 Garmisch-Partenkirchen, Klammstraße 6  
Phone: +49 88 21 7 10 50

### **Bonita Damenmode**

Beautiful outfits for women.

Address: 82467 Garmisch-Partenkirchen, Am Kurpark 27  
Opening hours: Monday. - Friday. 09.30 am - 06.00 pm  
Saturday 10.00 am - 04.00 pm  
Phone: +49 88 21 7 30 51 75  
Internet: [www.bonita.eu](http://www.bonita.eu)  
Email: [info@bonita.eu](mailto:info@bonita.eu)

### **Gina Laura**

Fashion store for women

Address: 82467 Garmisch-Partenkirchen, Chamonixstraße 1  
Phone: +49 88 21 7 30 02 44  
Internet: [www.gina-laura.de](http://www.gina-laura.de)  
Email: [service@gina-laura.com](mailto:service@gina-laura.com)

## HOTELS



In Garmisch-Partenkirchen, you can enjoy the kind of holiday you like: In one of the typical Bavarian boarding houses, in our inns and holiday apartments or in one of our hotels. There is one thing all accommodations have in common: You will feel the comfortable and pleasant atmosphere and stay with hosts whose friendliness is legendary and who will attend to your needs cordially.

For more accommodations please visit:  
[www.gapa.de](http://www.gapa.de).

### **Gasthof Fraundorfer**

In the town centre of Partenkirchen, near to the church of the Historic Ludwigsstraße, you can find the Gasthof Fraundorfer. The Fraundorfer Family has welcomed, hosted and entertained their guests for over 100 years.

The Bavarian kitchen in this house may be one reason, why guests love this restaurant. Their meals are freshly prepared. Reservations are recommended. See you soon!

Address: Ludwigstraße 24, 82467 Garmisch-Partenkirchen  
Opening hours: Monday - Sunday 07.00 am - 01.00 pm,  
Wednesday from 05.00 pm  
Phone: + 49 8821 9270  
Internet: [www.gasthof-fraundorfer.de](http://www.gasthof-fraundorfer.de)  
Email: [fraundorfer@gaponline.de](mailto:fraundorfer@gaponline.de)  
More Info: [www.gapa.de](http://www.gapa.de)

### **Restaurant Werdenfelser Hof**

In Garmisch-Partenkirchen coziness is important - like everywhere in Bavaria. And so is in the Gasthof Werdenfelser Hof, you can feel it. The building of the 18th century has a special charm, so that everybody feels straightaway good.

In the Restaurant you'll find both Bavarian and international cuisine. There's definitely something for every's taste.

Address: Ludwigstraße 58, Garmisch-Partenkirchen  
Opening hours: Monday - Sunday 09.00 am - 01.00 pm  
Phone: 08821/3621  
Internet: [www.werdenfelser-hof.de](http://www.werdenfelser-hof.de)  
Email: [info@werdenfelser-hof.de](mailto:info@werdenfelser-hof.de)  
More Info: [www.gapa.de](http://www.gapa.de)

### **Berggasthof Panorama**

This restaurant is down-to-earth and a typical Bavarian inn outside of Garmisch-Partenkirchen. The meal is seasonal and first-class prepared. The Rooms are in Alpine style, combined with high residential comfort.

Address: 82467 Garmisch-Partenkirchen, St. Anton 3  
Phone: +49 8821 9669070  
Internet: [www.berggasthof-panorama.com](http://www.berggasthof-panorama.com)  
Email: [info@berggasthof-panorama.de](mailto:info@berggasthof-panorama.de)  
More Info: [www.gapa.de](http://www.gapa.de)

### **Hotel Königshof**

It doesn't matter, if you are in this hotel on business or for some well-earned vacation, you will feel good there.

With 91 Hotelrooms, SPA with saunas and fitnesscenter and a restaurant, your stay will be enjoyable.

Address: 82467 Garmisch-Partenkirchen, St. Martinstr. 4  
Phone: +49 8821 91 40  
Internet: [www.hotel-koenigshof-garmisch.de](http://www.hotel-koenigshof-garmisch.de)  
More Info: [www.gapa.de](http://www.gapa.de)

### **Dorint Sporthotel**

Dorint Sporthotel is a 4-star superior hotel in Garmisch-Partenkirchen and is perfect for our sportive guests. Offering Garmisch-Partenkirchen's biggest Fitness and Spa area, e.g. gym, indoorpool, saunas, steambath, Nordic walking classes, Beauty & Wellness Lounge and much more. We are looking forward to welcoming you!

Address: 82467 Garmisch-Partenkirchen, Mittenwalderstr. 59

Phone: +49 8821 7060

Internet: [www.hotel-garmisch-partenkirchen.dorint.com](http://www.hotel-garmisch-partenkirchen.dorint.com)

Email: [info.garmisch@dorint.com](mailto:info.garmisch@dorint.com)

More Info: [www.gapa.de](http://www.gapa.de)

### **Familotel Leiner**

This hotel is especially for families with Kids/Teens and babies/toddlers.

It offers child care on 6 days a week, daily lunch and dinner with the kid's club, trips to pony stables and kiddie golfing and a Swimming school. The Program for the kids changes weekly. Wellness program for adults.

All-inclusive offer with Softdrinks and much more.

Careless Holidays for the whole Family!

Address: 82467 Garmisch-Partenkirchen, Wildenauer Straße 20

Phone: +49 8821 9 52 80

Internet: [www.leiners.de](http://www.leiners.de)

### **Hotel Rheinischer Hof**

The Hotel Rheinischer Hof is one of the most ecofriendly hotel you will find in Garmisch-Partenkirchen and it stands for a more efficient use of resources (water, heat, food, electricity and fossil fuels.)

Address: 82467 Garmisch-Partenkirchen, Zugspitzstraße 76

Phone: +49 8821 9120

Internet: [www.rheinischerhof-garmisch.de](http://www.rheinischerhof-garmisch.de)

Email: [info@rheinischerhof-garmisch.de](mailto:info@rheinischerhof-garmisch.de)

More Info: [www.gapa.de](http://www.gapa.de)

### **Best Western Hotel Obermühle**

Welcome to Best Western Hotel Obermühle!

The Best Western Hotel Obermühle has been family owned and operated since 1634. The hotel is located near the city and Congress Center at the foot of Germany's highest mountain, Zugspitze. There is a rustic atmosphere with a superior staff. As their guest, you will receive the utmost hospitality and personal attention. The hotel offers a luxurious heated indoor pool, sauna, solarium and a large garden with lounge chairs for sunbathing. Of course these features are all included in the price of your room. All 90 rooms are equipped with mini bar, telephone, radio, Satellite TV and either a balcony or terrace with mountain views. As their guest, you will be spoiled every day: Culinary pleasure includes morning breakfast and dinner with gourmet menus. Or why don't you choose to dine a la carte from a range of Bavarian specialties to international cuisine. The Obermühle restaurant, Muelenstube, the millwheel bar, Muehlradl or their relaxing beer garden in the summer are waiting for your visit. Should you desire Mediterranean cuisine, we would recommend you the hotel owned trend restaurant Spago which is only five minutes from the hotel. For all occasions, private or business, the hotel offers the right venue. Our modern seminar rooms accommodate 20 to 100 guests and guarantee a successful seminar or conference. Your event will be facilitated with state of the art modern audio visual technique and equipment.

Address: 82467 Garmisch-Partenkirchen, Mühlstraße 22

Phone: +49 8821 7040

Internet: [www.bestwestern.de](http://www.bestwestern.de)

Email: [info@obermuehle.bestwestern.de](mailto:info@obermuehle.bestwestern.de)

More Info: [www.gapa.de](http://www.gapa.de)

### **Hotel Reindl's Partenkirchner Hof**

Welcome to this family-run and -owned hotel in the centre of Garmisch-Partenkirchen. The hotel consists of three buildings. The main building is about 100 years old and there are single rooms, double rooms and junior suites. The rooms of the second house, the House Alpspitz offers a beautiful view of the Mount Zugspitze. House Wetterstein is the 3rd house and also connected to the other buildings. Head Chef Marianne Holzingeris is famous for her excellent cuisine.

Address: 82467 Garmisch-Partenkirchen, Bahnhofstraße 15  
Phone: +49 8821 943870  
Internet: [www.reindls.de](http://www.reindls.de)  
Email: [info@reindls.de](mailto:info@reindls.de)  
More Info: [www.gapa.de](http://www.gapa.de)

### **Hotel Drei Mohren**

In one of the most traditional houses in Garmisch-Partenkirchen, the Hotel Drei Mohren, you can enjoy the peace in front of a great mountain view.

But the best is, the hotel is located in the oldest and most beautiful street, the Ludwigsstraße, which is a part of Historic Partenkirchen.

Address: 82467 Garmisch-Partenkirchen, Ludwigstraße 65  
Phone: +49 8821 9130  
Internet: [www.dreimohren.de](http://www.dreimohren.de)  
Email: [info@dreimohren.de](mailto:info@dreimohren.de)  
More Info: [www.gapa.de](http://www.gapa.de)

### **Hotel Alpengruß**

The informal hotel is close to many sights in Garmisch-Partenkirchen. For example, the Olympic Sky jump is close enough to go there bei foot. The hotel has single rooms, double rooms and rooms for three and four person. If the weather is fine, you can go out in the Biergarten for a beer or dinner.

Address: 82467 Garmisch-Partenkirchen, Gehfeldstraße 10  
Phone: +49 8821 2616

Internet: [www.hotel-alpengruss.de](http://www.hotel-alpengruss.de)  
Email: [info@hotel-alpengruss.de](mailto:info@hotel-alpengruss.de)  
More Info: [www.gapa.de](http://www.gapa.de)

### **Hotel Zugspitze**

Not just night' stay in beautiful rooms and suits are the offer of the Hotel Zugspitze, but also rooms for conferences, SPA & AlmWell and a Taiji School. But the best of this hotel is the Cuisine. There, only natural and especially regional products are used for best meals you could ever wish.

Address: 82467 Garmisch-Partenkirchen, Klammstraße 19  
Phone: +49 8821 9010  
Internet: [www.hotel-zugspitze.de](http://www.hotel-zugspitze.de)  
Email: [info@hotel-zugspitze.de](mailto:info@hotel-zugspitze.de)  
More Info: [www.gapa.de](http://www.gapa.de)

### **Riessersee Hotel Resort**

The Riessersee Hotel Resort consists of a main building with 166 rooms and the Seehaus with 9 luxury suites, 2 residences and a gorgeous terrace in front of the Riessersee Lake. In the restaurant you can enjoy culinary highlights, in the SPA-area you can relax and enjoy the silence.

Address: 82467 Garmisch-Partenkirchen, Riess 5  
Phone: +49 8821 7580  
Internet: [www.riessersee-hotel.de](http://www.riessersee-hotel.de)  
Email: [willkommen@riessersee-hotel.de](mailto:willkommen@riessersee-hotel.de)  
More Info: [www.gapa.de](http://www.gapa.de)

### **Hotel Garmischer Hof**

Close to the centre there's the Hotel Garmischer Hof with over 50 rooms, a kitchen, which only uses bio-products out of the region, and a Alpisana SPA, where you can come down.

Address: 82467 Garmisch-Partenkirchen, Chamonixstr. 10  
Phone: +49 8821 9110  
Internet: [www.garmischer-hof.de](http://www.garmischer-hof.de)  
Email: [hotel@garmischer-hof.de](mailto:hotel@garmischer-hof.de)  
More Info: [www.gapa.de](http://www.gapa.de)

### **Hotel & Gasthof Schatten**

Our house is located in the city- center of Partenkirchen, the oldest part of the town. You will feel soon familiar in our nice house and enjoy its personal flavour. The "Schatten" has 20 guest rooms and 2 Suites. The stylish rooms are equipped with satellite tv, direct dial telephone, safe, modem connection and hair- dryer. All our rooms are non- smoking rooms. Family rooms and rooms for disabled persons are available on request.

The hotel offers 22 parking spaces in the underground garage, an elevator, restaurant, a big saloon for private family celebrations and more.

Our house enjoys the quiet street and charm of a traditional bavarian house with magnificent views of the mountains.

As a base to exploring the mountains its central position is ideal.

The restaurant combines warm atmosphere and modern country house style.

Come in and taste the exquisite creations of our head chef Martin Baudrexl.

We also have a beer garden , where you can enjoy a fresh beer in summer.

Every Tuesday and Saturday you enjoy the spectacle in our restaurant with typical Bavarian music and our little Schuhplattler (Bavarian folk dance).

Address: 82467 Garmisch-Partenkirchen, Sonnenbergstraße 10-12  
Phone: +49 8821 9 43 08 90  
Internet: [www.hotel-schatten.de](http://www.hotel-schatten.de)  
Email: [info@hotel-schatten.de](mailto:info@hotel-schatten.de)  
More Info: [www.gapa.de](http://www.gapa.de)

### **Hotel Garni Roter Hahn**

Right in the heart of Garmisch-Partenkirchen - close to Cafés, Stores and the

Michael-Ende-Kurpark - there's the Hotel Roter Hahn.

Just feel good in comfortable rooms. And there's more, for instance an indoor swimming pool, sauna, solarium: enjoy the free Fitness training at a gym just across the street. WLAN

Address: 82467 Garmisch-Partenkirchen, Bahnhofstraße 44  
Phone: +49 8821 9 43 27 0  
Internet: [hotel-roter-hahn.com](http://hotel-roter-hahn.com)  
Email: [info@hotel-roter-hahn.com](mailto:info@hotel-roter-hahn.com)  
More Info: [www.gapa.de](http://www.gapa.de)

### **Grand Hotel Sonnenbichl**

Located at the entrance of Garmisch-Partenkirchen the Grand Hotel Sonnenbichl offers a breathtaking view over the Bavarian Alps. The Hotel offers 95 rooms including suites, 6 conference rooms and the full comfort of a first class hotel. In our Food and Beverage facilities we offer you regional and international specialities and you may enjoy the view on our panorama terrace. For your relaxation enjoy our indoor swimming pool, sauna, beauty and massage as well as the gym.

Address: 82467 Garmisch-Partenkirchen, Burgstraße 97  
Phone: +49 8821 70 20  
Internet: [www.grandhotel-sonnenbichl.com](http://www.grandhotel-sonnenbichl.com)  
Email: [info@sonnenbichl.de](mailto:info@sonnenbichl.de)  
More Info: [www.gapa.de](http://www.gapa.de)

### **Hotel Bavaria**

A bio Hotel, surrounded by an idyllic garden, beside the Partnach River, you can find the Hotel Bavaria. For kids there's a playground with a swing, slide and a sand box. And the best? You can fish on your own and the Hotel Bavaria will prepare the fish for you.

Address: 82467 Garmisch-Partenkirchen, Partnachstraße 51  
Phone: +49 8821 34 66  
Internet: [www.hotel-bavaria-garmisch.com](http://www.hotel-bavaria-garmisch.com)  
Email: [info@hotel-bavaria-garmisch.com](mailto:info@hotel-bavaria-garmisch.com)

More Info: [www.gapa.de](http://www.gapa.de)

### **Hotel Hausberg**

This comfortable, rustic 3 star hotel is located in a silent hill outside the centre. The partly rustic equipped suits, double rooms and single rooms invite to relax and enjoy the panorama. In the Restaurant, you get regaled not just with Bavarian 'Schmankerl', but also with international cuisine.

Address: 82467 Garmisch-Partenkirchen,  
Phone: +49 8821 2204  
Internet: [www.hotel-hausberg.de](http://www.hotel-hausberg.de)  
Email: [info@hotel-hausberg.de](mailto:info@hotel-hausberg.de)  
More Info: [www.gapa.de](http://www.gapa.de)

### **Hotel Vier Jahreszeiten**

In the traditional hotel, which is situated in the heart of the town, you can enjoy the mountain Panorama - and especially the peace. Over 50 rooms offer a fabulous view over the alps and the rooms are cosy and lovingly furnished and feature bath/ WC or shower/WC, hairdryer, TV, phone.

When you are hungry, you can enjoy your meal on the sunny terrace, with mountain view. And the best is: the traditional 'Haxnessen' (knuckle of pork).

Address: 82467 Garmisch-Partenkirchen  
Phone: +49 8821 91 60  
Internet: [www.vierjahreszeiten.cc](http://www.vierjahreszeiten.cc)  
Email: [info@vierjahreszeiten.cc](mailto:info@vierjahreszeiten.cc)  
More Info: [www.gapa.de](http://www.gapa.de)

### **Hotel Staudacherhof**

Staudacherhof is only 5 minutes walking distance from the centre of Garmisch. You will stay in one of the most beautiful houses of Garmisch, comfortable, leisurely-Bavarian yet exclusively homely.  
The hotel offers a high recreational value: heated swimming pool), Sauna, tepidarium, laconium,

steam sauna room and much more.

All rooms have been individually decorated with great care and love to detail and are equipped with bath/shower/WC, safe, colour TV, Satellite receiver, radio, telephone, High speed internet and mini bar and can be comfortably accessed via elevator. The hotel has 40 parking bays and 5 garages.

Address: 82467 Garmisch-Partenkirchen, Höllentalstraße 48  
Phone: +49 8821 9290  
Internet: [www.staudacherhof.de](http://www.staudacherhof.de)  
Email: [info@staudacherhof.de](mailto:info@staudacherhof.de)  
More Info: [www.gapa.de](http://www.gapa.de)

### **Hotel Aschenbrenner**

The ancient Mansion of the Princess of Reuss is a charming hotel with 23 comfortable rooms. Lodge in stylish ambience. Enjoy a delightful breakfast in the historic breakfast room or on the sun terrace with magnificent mountain view. Walking distance to the center of Garmisch, congress center and the popular pedestrian precinct.

Address: 82467 Garmisch-Partenkirchen, Loisachstraße 46  
Phone: +49 8821 9 59 70  
Internet: [www.hotel-aschenbrenner.de](http://www.hotel-aschenbrenner.de)  
Email: [info@hotel-aschenbrenner.de](mailto:info@hotel-aschenbrenner.de)  
More Info: [www.gapa.de](http://www.gapa.de)

### **Hotel Wittelsbacher Hof**

The Wittelsbacher Hof (Family-rund with 4 star Quality) is located in the centre of Garmisch-Partenkirchen, just a 5-minute-walk to the pedestrian area of Garmisch. This hotel offers a heated indoor-swimmingpool, an area for sauna an wellness, terrace in the garden and much more.

Address: 82467 Garmisch-Partenkirchen, Von-Brug-Straße 24  
Phone: +49 8821 53096  
Internet: [wittelsbacher-hof.com](http://wittelsbacher-hof.com)  
Email: [info@wittelsbacher-hof.com](mailto:info@wittelsbacher-hof.com)

More Info: [www.gapa.de](http://www.gapa.de)

### **Atlas Posthotel**

The Atlas Posthotel has an history, which goes back over 300 years. It has always been a house of hospitableness. Today, the hotel allures guests with its charme and friendly staff. In the restaurant await you culinaric specialties or with Bavarian meals.

Address: 82467 Garmisch-Partenkirchen, Marienplatz 12

Phone: +49 8821 70 90

Internet: [www.atlas-posthotel.com](http://www.atlas-posthotel.com)

Email: [info@atlas-posthotel.com](mailto:info@atlas-posthotel.com)

More Info: [www.gapa.de](http://www.gapa.de)

### **Gasthof Schweizerbartl**

Enjoy a culinaric journey over the alps - from Tyrol to Bavaria. Every meal will be a unforgettable expierence, you never want to miss. From the comfortable rooms you can have a look at the Mount Zugspitze, it's very impressive.

And if you love cross-country-skiing, you are on the perfect place, because just 100 metres from the little hotel there's a cross-country-ski-run, one of the best in Germany.

Address: 82467 Garmisch-Partenkirchen

Phone: +49 8821 3071

Internet: [www.schweizerbartl.de](http://www.schweizerbartl.de)

Email: [info@schweizerbartl.de](mailto:info@schweizerbartl.de)

More Info: [www.gapa.de](http://www.gapa.de)

### **Hotel Hillebrandt**

The hotel is located in a very quiet but central part of Garmisch, in the vicinity of the Olympic-Icestadum, the Alpspitzwellenbad (wave-pool), very close to the Zugspitz-Railwaystation and the train station; just 10 minutes walking distance to the skilifts and a view minutes away by from the shopping area in the Garmisch pedestrian Zone.

All rooms include private bathrooms/WC, telephone and cable TV (English channel available). The rooms are newly furnished and have large balconies with a magnificent view of the mountains. Built in a chalet style, the hotel offers a warm and cosy atmosphere with all the facilities of a modern logging, to include a Bavarian room, dining room, lounge and a spa.

We offer a delicious breakfast-buffet and in the evening you enjoy our varied menues, as the owner is also the chef. In the summer-time our guests have the possibility to enjoy the meals outside on our panorama terrace.

Please ask for our promotions and arrangements.

We provide free coffee/tea until 6 p.m. for our guests. Enjoy.

Free Wifi in the rooms and free internet corner in the lobby.

Address: 82467 Garmisch-Partenkirchen, Riffelstraße 17

Phone: +49 8821 94 30 40

Internet: [www.hotel-hillebrandt.de](http://www.hotel-hillebrandt.de)

Email: [info@hotel-hillebrandt.de](mailto:info@hotel-hillebrandt.de)

More Info: [www.gapa.de](http://www.gapa.de)

## ESSENTIAL INFORMATION



Markt Garmisch-Partenkirchen

Garmisch-Partenkirchen Tourism, founded in 1960 with currently 60 employees has the slogan "Discover your true nature" - 365 days a year and has a lot to offer: Lots of nature. Lots of culture. And lots of heart.

Garmisch-Partenkirchen, the venue for the Alpine World Ski Championships 2011 is a Spa-health resort of the highest class with historic town centres and is member of "Best of the Alps".

### Closest Airports



If you want to travel by plane you can decide whether you want to go to the airport in Munich, Innsbruck, Memmingen, Stuttgart or Zurich. The

Munich airport is 120km from Garmisch-Partenkirchen, Innsbruck airport 60km.

Photo: Juan Garces

More Info:

[www.gapa.de/Garmisch-Partenkirchen\\_Arrival-Mobility](http://www.gapa.de/Garmisch-Partenkirchen_Arrival-Mobility)

### Telephone



Country Code: + 49 Area Code: (0) 8821

Photo: Jardson Almeida

### Public Transport



Bus routes in and around Garmisch-Partenkirchen Citybus: [www.gemeindewerke-garmisch-partenkirchen.de/ortsbus](http://www.gemeindewerke-garmisch-partenkirchen.de/ortsbus) To Kochel/Füssen/Steingaden:

[www.rvo-bus.de/bin/tmt\\_parser.pl](http://www.rvo-bus.de/bin/tmt_parser.pl)

To Eibsee: [www.eibseebus.de/startseite.php](http://www.eibseebus.de/startseite.php)

Train: [www.bahn.de/p\\_en/view/index.shtml](http://www.bahn.de/p_en/view/index.shtml)

Photo: Pierre-Luc Auclair

### Taxi's in GaPa



Of course we are around the clock at each cab station attainable by telephone. Our cab stations are at Marienplatz (district

Garmisch)

Tel.: +49 8821 24 08

or

Tel.: +49 8821 24 09

at Bahnhofplatz

Tel.: +49 8821 16 16

or

Tel.: +49 8821 1 94 10



If the phones should not be occupied, you will get directly connected with a radio taxi.

## Pharmacy



Enzian Apotheke  
Rathausplatz 2 82467  
Garmisch-Partenkirchen  
+ 49 8821 942030  
Ludwigs-Apotheke  
Ludwigsstr. 50 82467

Garmisch-Partenkirchen  
+ 49 8821 4897

Dreiterspitz-Apotheke  
Hauptstr. 75  
82467 Garmisch-Partenkirchen  
+ 49 8821 57533

Alte Apotheke  
Am Marienplatz 10  
82467 Garmisch-Partenkirchen  
+ 49 8821 2050

Photo: Gemma Garner

## ART & CULTURE



Markt Garmisch-Partenkirchen

Garmisch-Partenkirchen is a well-known place in Bavaria. And what is Bavaria famous for? Yes, for its traditions, culture, lifestyle - and its excellent beer of course. It would take days to tell about all traditions,

you have to experience that on your own. Seeing the girls wearing "Dirndl" and the boys wearing "Lederhosn" is an unique experience.

## Kleines Theater

Fritz Rohrbeck, director and founder of the Kleines Theater (English: Little Theater), felt drawn to the stage ever since he was a boy. After discovering the town of Garmisch-Partenkirchen he decided to start a theatre here, and thus the "Little Theatre" was born. The theatre is now in its 3rd generation; its productions regularly delight audiences with their care and attention to detail.

Address: Am Richard Strauss Platz, 82467  
Garmisch-Partenkirchen

Internet: [www.kleinstheater.de](http://www.kleinstheater.de)

More Info: [www.gapa.de/Garmisch\\_Parttenkirchen\\_Art+Culture\\_Theatre\\_Concert](http://www.gapa.de/Garmisch_Parttenkirchen_Art+Culture_Theatre_Concert)

## Churches



There are very much old churches in and around Garmisch-Partenkirchen which are worth a visit. For example, there's the Sebastianskircherl. This little chapel stands next to the former cemetery for the victims of the Black Death.

If you want more information about churches in Garmisch-Partenkirchen, visit our website: [http://www.gapa.de/Town\\_Region\\_Art\\_Culture\\_Churches.html](http://www.gapa.de/Town_Region_Art_Culture_Churches.html)

Photo: Markt Garmisch-Partenkirchen

Address: Ludwigsstraße 81, 82467 Garmisch-Partenkirchen  
Internet: [www.gapa.de/Garmisch-Partenkirchen\\_Town+Region\\_Art+Culture\\_Churches](http://www.gapa.de/Garmisch-Partenkirchen_Town+Region_Art+Culture_Churches)

## Museum Werdenfels



The Museum Werdenfels was set up in 1895 in Garmisch-Partenkirchen. Here, you can see early artifacts like sacral objects or items of the

rural way of life.

You also have to look at the 'Fasnachtsraum'. There you will be informed about the 5th season the so-called 'Fasching', the unique Bavarian Carnival.

Photo: Museum Werdenfels

Address: Ludwigsstraße 47, 82467 Garmisch-Partenkirchen

Opening hours: Tuesday - Sunday: 10:00 - 17:00

Phone: +49 8821 751710

Internet: [www.werdenfels-museum.de](http://www.werdenfels-museum.de)

Email: [info@werdenfelsmuseum.de](mailto:info@werdenfelsmuseum.de)

## Aschenbrenner Museum



The founder of the Aschenbrenner Museum, Mrs. Marianne Aschenbrenner, was born in 1928 in Düsseldorf. She told, that once she

got a book about porcelain - and she was stoked. Now you can admire this special art: porcelain, which was called 'White Gold' in the 18th century. There is more to see: historic toys and dolls, Easter eggs, nativity Scenes and much more.

Photo: Mark Garmisch-Partenkirchen

Address: Loisachstraße 44, 82467 Garmisch-Partenkirchen

Opening hours: Tuesday - Sunday: 11:00 - 17:00

Phone: +49 8821 7307105

Internet: [www.museum-aschenbrenner.de](http://www.museum-aschenbrenner.de)

Email: [mail@museum-aschenbrenner.de](mailto:mail@museum-aschenbrenner.de)

## Kurhaus



Have you ever heard of Jim Knopf? Momo and the Grey Men? The never-ending Story? The author of these very famous books was

Michael Ende who was born in

Garmisch-Partenkirchen and now you can visit an exhibition which bears his name. Very exciting, not just for kids, even for adults.

Photo: Markt Garmisch-Partenkirchen

Address: Fürstenstraße 14, 82467 Garmisch-Partenkirchen

Opening hours: Tuesday - Sunday: 14:00 - 18:00

Phone: +49 8821 180790

More Info: [www.gapa.de/Garmisch-Partenkirchen\\_Sights\\_Michael-Ende-Kurpark](http://www.gapa.de/Garmisch-Partenkirchen_Sights_Michael-Ende-Kurpark)

### Population

28.245

### Currency

Euro, €1 = 100 cent

### Opening hours

Bigger stores like the shopping centre "GEP" are open from Monday - Saturday between 9.00 am and 8.00 pm

### Internet

[www.gapa.de](http://www.gapa.de)

### Newspapers

[www.merkur-online.de/lokales/garmisch-partenkirchen](http://www.merkur-online.de/lokales/garmisch-partenkirchen)  
[www.kreisbote.de/lokales/garmisch-partenkirchen](http://www.kreisbote.de/lokales/garmisch-partenkirchen)

### Emergency numbers

Emergency Number 112

### Tourist information

Tourist Information at the Richard-Strauss-Platz 2  
82467 Garmisch-Partenkirchen  
Tel. +49 8821 180 700  
E-Mail: [tourist-info@gapa.de](mailto:tourist-info@gapa.de)

Monday through Friday from 09:00 am to 05:00 pm  
Saturday 09:00 am to 03:00 pm  
Sundays and on public German Holidays closed

Tourist Information at the Olympic Ski Jump

Thursday through Sunday from 10:00 am to 01.00 pm;  
01.30 pm to 04.00 pm.  
Short-term closures possible